

2013/2014

# Connecting Seas:

## Cultural and Artistic Exchange

# Getty Research Institute Grants

The 2013–2014 academic year at the Getty Research Institute and Getty Villa will be devoted to exploring the art-historical impact of maritime transport. Far from being barriers, seas and oceans are vital links connecting cultures. The goal of this research theme is to explore how bodies of water have served, and continue to facilitate, a rich and complex interchange in the visual arts.

The Getty Research Institute and the Getty Villa invite proposals focusing on artistic exchange and the transmission of knowledge across bodies of water from ancient times to the present day. Scholars actively engaged in studying the role of artists, patrons, priests, merchants, and explorers in oceanic exchange are encouraged to apply, and projects focusing on the Pacific are particularly welcome.

Residential grants and fellowships are available for scholars at all stages in their careers:

- Getty scholar grants for established scholars, artists, or writers who have attained distinction in their fields
- Getty pre- and postdoctoral fellowships
- GRI-NEH postdoctoral fellowships, made possible through a grant from the National Endowment for the Humanities
- VolkswagenStiftung postdoctoral fellowships, funded by the Volkswagen Foundation

### How to Apply:

Detailed instructions, eligibility requirements, application forms, and a complete theme statement are available online at: [www.getty.edu/foundation/apply](http://www.getty.edu/foundation/apply)

### Address inquiries to:

Attn: (Type of Grant)  
 The Getty Foundation  
 1200 Getty Center Drive, Suite 800  
 Los Angeles, CA 90049-1685 USA  
 Phone: 310 440.7374  
 E-mail: [researchgrants@getty.edu](mailto:researchgrants@getty.edu)

**Deadline: 1 November 2012**



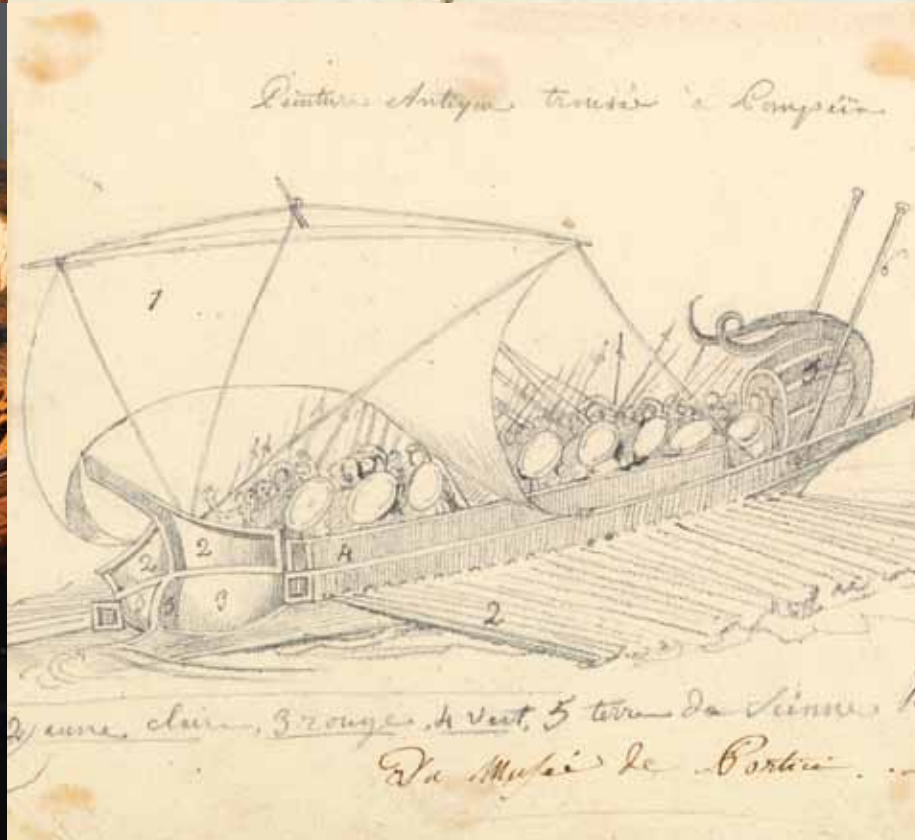
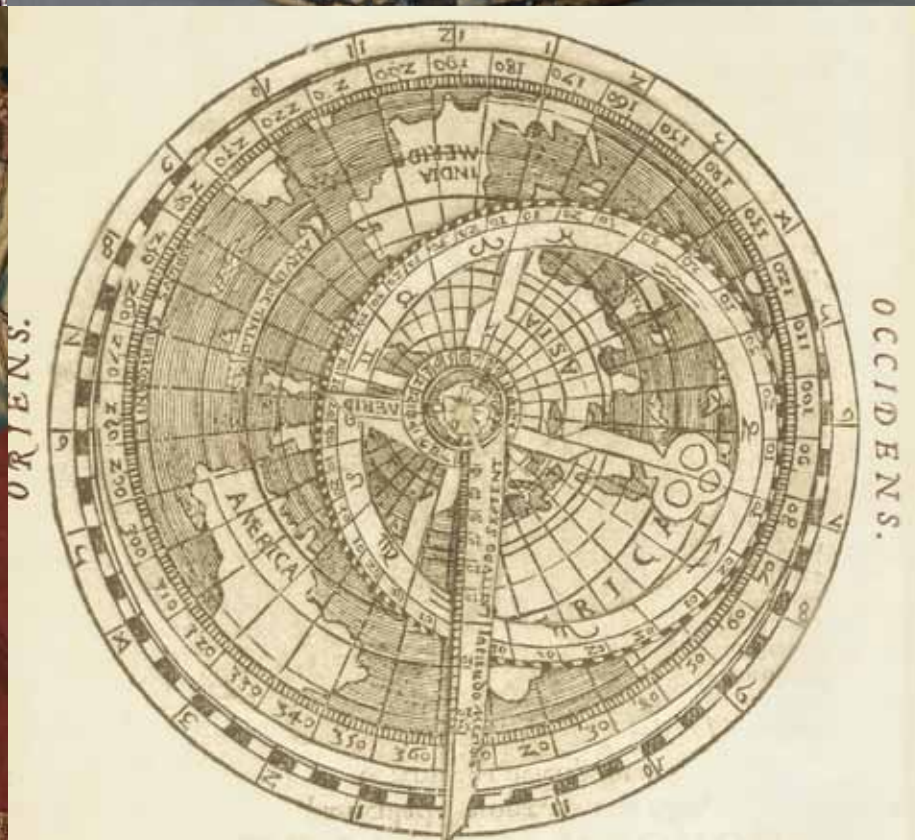
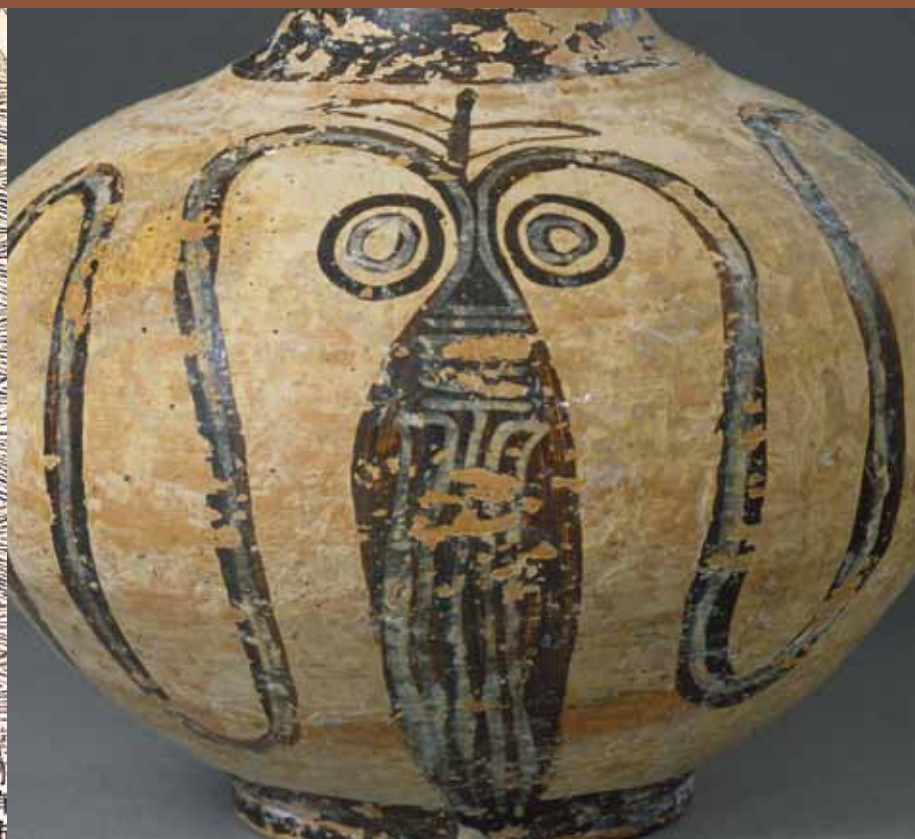
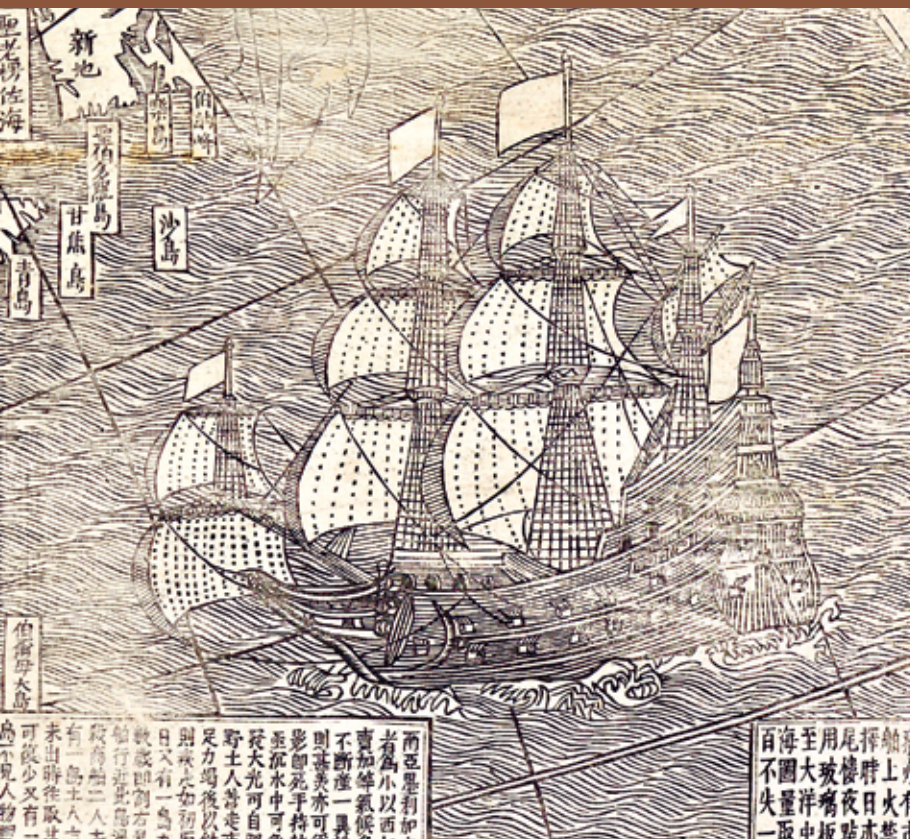
The J. Paul Getty Trust



NATIONAL  
ENDOWMENT  
FOR THE  
HUMANITIES



VolkswagenStiftung



Images (left to right): Detail of Western Hemisphere, from Ferdinand Verbiest, *Kunyu quantu* (Seoul, ca. 1860). (2003.PR.63\*\*) | Detail of Water Jar with a Cuttlefish, Greek (Wycenean), 1300–1200 B.C., J. Paul Getty Museum, Villa Collection, Gift of Barbara and Lawrence Fleischman (96.AE.69) | Detail of indigenous people in canoes approaching ships, from Johann Theodor de Bry, *America pars VIII* (Frankfurt, 1625). 50. (87.825808) | Detail of *The Astronomers*, from *The Story of the Emperor of China* series, Beauvais Tapestry Manufactory, ca. 1697–1705, J. Paul Getty Museum (83.DD.338) | Volvelle with polar world map, from Peter Apian, *Cosmographiae Introductio* (Venice, 1533), n.p. (1379-424) | Mounted Vase, Chinese porcelain ca. 1662–1722, French mounts ca. 1745–49, J. Paul Getty Museum (79.D1.1211) | Detail of an Attic black-figure *Dinos*, Circle of the Antimenes Painter, Greek (Attic), ca. 520–510 B.C., J. Paul Getty Museum, Villa Collection (92.AE.88) | Detail of *Peinture antique trouvée à Pompéïa*, from Élie-Honoré Montagny, *Recueil d'antiquités dessinées d'après des peintures* . . . (1804–5). (2004.M.12\*) | Detail of Paul Gauguin, *Head with Horns*, 1895–97, J. Paul Getty Museum (2002.18) Design: © 2012 J. Paul Getty Trust