

22.

Plate 558, 5–6

Accession Number 76.AE.131.10

PROVENANCE –1976, Max and Linda Palevsky (Los Angeles, California); 1976, donated to the J. Paul Getty Museum.

SHAPE AND ORNAMENT Single fragment from the body of a vessel.

SUBJECT Part of a chariot, with the upper section of the wheel.

ATTRIBUTION AND DATE Unattributed. Fifth century B.C.

DIMENSIONS AND CONDITION Maximum preserved dimension 3.65 cm. Surface worn, especially interior. Nicks and scratches; chips missing. Interior black.

TECHNICAL FEATURES Preliminary sketch. Relief contour. Dilute glaze inside.

BIBLIOGRAPHY Not previously published.

COMPARANDA For chariots, see Manakidou, *Parastaseis me armata*.



1

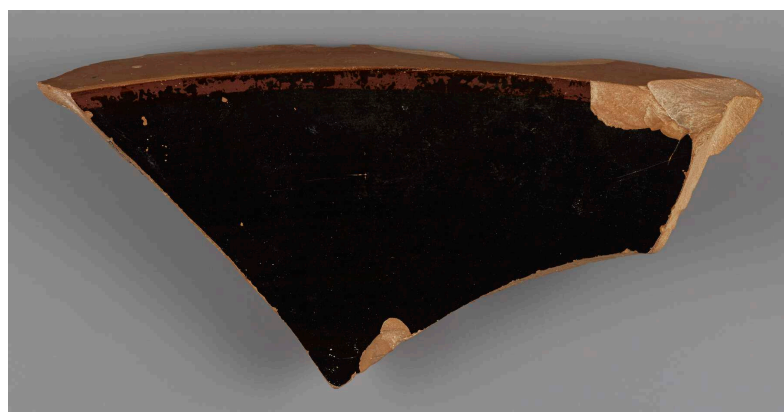


2

86.AE.202



3



4

86.AE.203



5



6

76.AE.131.10