

Getty News

Transcending Time: The Medieval Book of Hours



1. *King David in Penitence*, about 1480
Master of the Houghton Miniatures (Flemish, active about 1476 – 1480)
Tempera colors and gold on parchment
Leaf: 12.5 × 7.8 cm (4 15/16 × 3 1/16 in.)
The J. Paul Getty Museum, Los Angeles, Ms. 117
2018.78



2. *Mary Spinning Wool*, about 1500
Master of Cardinal Bourbon (French, about 1480 - 1500)
Tempera colors, ink and gold on parchment
Leaf: 13.3 × 8.7 cm (5 1/4 × 3 7/16 in.)
The J. Paul Getty Museum, Los Angeles, Ms. 109,
fol. 121
2011.40.121



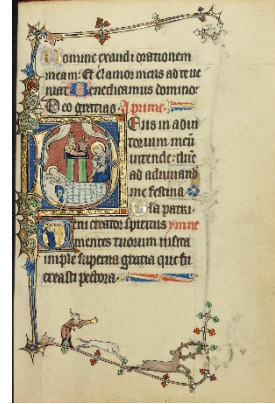
3. *March Calendar Page; Pruning Trees; Aries*, early 16th century
Unknown artist, German
Tempera colors on parchment
Leaf: 13.5 × 10.5 cm (5 5/16 × 4 1/8 in.)
The J. Paul Getty Museum, Los Angeles, Ms. Ludwig
IX 16, fol. 3
83.ML.112.3



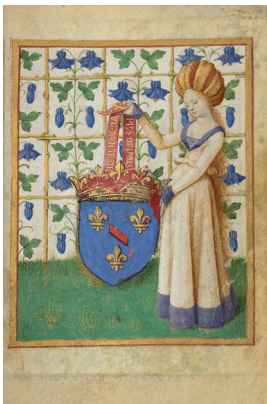
4. *A Burial*, about 1420
Spitz Master (French, active about 1415 - 1425)
Tempera colors, gold, and ink on parchment
Leaf: 20.2 × 14.9 cm (7 15/16 × 5 7/8 in.)
The J. Paul Getty Museum, Los Angeles, Ms. 57,
fol. 194
94.ML.26.194



5. *A Woman in Prayer before the Virgin and Child*, about 1410
 Follower of the Egerton Master (French / Netherlandish, active about 1405 - 1420)
 Tempera colors, gold leaf, gold paint, and ink on parchment
 Leaf: 19.1 × 14 cm (7 1/2 × 5 1/2 in.)
 The J. Paul Getty Museum, Los Angeles, Ms. Ludwig IX 5, fol. 19
 83.ML.101.19



6. *Initial D: The Nativity; Initial V: A Monk in Prayer*, about 1300, Northeastern France
 Unknown artist
 Tempera colors, gold leaf, and ink on parchment
 Leaf: 26.4 × 18.3 cm (10 3/8 × 7 3/16 in.)
 The J. Paul Getty Museum, Los Angeles, Ms. Ludwig IX 3, fol. 76
 83.ML.99.76



7. *Coat of Arms Held by a Woman*, 1455
 Jean Fouquet (French, born about 1415 - 1420, died before 1481)
 Tempera colors, gold paint, gold leaf, and ink on parchment
 Leaf: 11.4 × 8.3 cm (4 1/2 × 3 1/4 in.)
 The J. Paul Getty Museum, Los Angeles, Partial gift of Gerald F. Borrmann, Ms. 7, fol. 1
 85.ML.27.1



8. *The Man of Sorrows at the Last Judgment*, about 1480 - 1485
 Jean Bourdichon (French, 1457 - 1521)
 Tempera colors, gold, and ink on parchment
 Leaf: 16.4 × 11.6 cm (6 7/16 × 4 9/16 in.)
 The J. Paul Getty Museum, Los Angeles, Ms. 6, fol. 83
 84.ML.746.83



9. *Arms of Lois de la Fontaine*, about 1480 – 1485 ?,
Belgium (Bruges)
Unknown artist
Tempera colors and gold on parchment
Leaf: 20.5 × 14.8 cm (8 1/16 × 5 13/16 in.)
The J. Paul Getty Museum, Los Angeles, Ms. 23, fol.
29
86.ML.606.29



10. *The Crucifixion*, about 1405 - 1410
Masters of Dirck van Delf (Dutch, active about 1400
- about 1410)
Tempera colors, gold leaf, and ink on parchment
Leaf: 16.5 × 11.7 cm (6 1/2 × 4 5/8 in.)
The J. Paul Getty Museum, Los Angeles, Ms. 40,
fol. 61v
90.ML.139.61v