

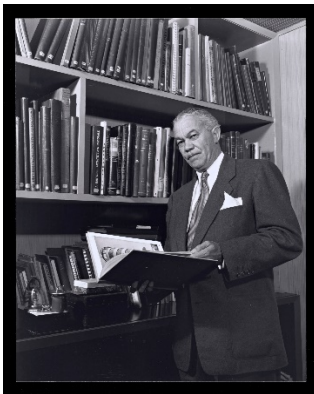
# Getty News



1. Portrait of Paul R. Williams, photography by Julius Shulman, 1952, Gelatin Silver Print, © J. Paul Getty Trust. Getty Research Institute, Los Angeles (2004.R.10)



2. Portrait of Paul R. Williams, photography by Julius Shulman, 1952, Gelatin Silver Print, © J. Paul Getty Trust. Getty Research Institute, Los Angeles (2004.R.10)



3. Portrait of Paul R. Williams, photography by Julius Shulman, 1952, Gelatin Silver Print, © J. Paul Getty Trust. Getty Research Institute, Los Angeles (2004.R.10)



4. Nellie Hirsch House, 10800 Ambazac Way, Bel Air, Paul R. Williams architect, Built 1933-34, photography by Julius Shulman, 1982, Gelatin Silver Print, © J. Paul Getty Trust. Getty Research Institute, Los Angeles (2004.R.10)



5. Nellie Hirsch House, 10800 Ambazac Way, Bel Air, Paul R. Williams architect, Built 1933-34, photography by Julius Shulman, 1982, Gelatin Silver Print, © J. Paul Getty Trust. Getty Research Institute, Los Angeles (2004.R.10)



6. Nellie Hirsch House, 10800 Ambazac Way, Bel Air, Paul R. Williams architect, Built 1933-34, photography by Julius Shulman, 1982, Gelatin Silver Print, © J. Paul Getty Trust. Getty Research Institute, Los Angeles (2004.R.10)



7. Nellie Hirsch House, 10800 Ambazac Way, Bel Air, Paul R. Williams architect, Built 1933-34, photography by Julius Shulman, 1982, Gelatin Silver Print, © J. Paul Getty Trust. Getty Research Institute, Los Angeles (2004.R.10)



8. Nellie Hirsch House, 10800 Ambazac Way, Bel Air, Paul R. Williams architect, Built 1933-34, photography by Julius Shulman, 1982, Chromogenic print, © J. Paul Getty Trust. Getty Research Institute, Los Angeles (2004.R.10)



9. Nellie Hirsch House, 10800 Ambazac Way, Bel Air, Paul R. Williams architect, Built 1933-34, photography by Julius Shulman, 1982, Chromogenic print, © J. Paul Getty Trust. Getty Research Institute, Los Angeles (2004.R.10)



10. Nellie Hirsch House, 10800 Ambazac Way, Bel Air, Paul R. Williams architect, Built 1933-34, photography by Julius Shulman, 1982, Chromogenic print, © J. Paul Getty Trust. Getty Research Institute, Los Angeles (2004.R.10)



11. Nellie Hirsch House, 10800 Ambazac Way, Bel Air, Paul R. Williams architect, Built 1933-34, photography by Julius Shulman, 1982, Chromogenic print, © J. Paul Getty Trust. Getty Research Institute, Los Angeles (2004.R.10)



12. Lucille Ball and Desi Arnaz House, Palm Springs, Paul R. Williams architect, Built 1954-55, photography by Julius Shulman, 1955, Gelatin Silver Print, © J. Paul Getty Trust. Getty Research Institute, Los Angeles (2004.R.10)



13. Lucille Ball and Desi Arnaz House, Palm Springs, Paul R. Williams architect, Built 1954-55, photography by Julius Shulman, 1955, Gelatin Silver Print, © J. Paul Getty Trust. Getty Research Institute, Los Angeles (2004.R.10)



14. Lucille Ball and Desi Arnaz House, Palm Springs, Paul R. Williams architect, Built 1954-55, photography by Julius Shulman, 1955, Gelatin Silver Print, © J. Paul Getty Trust. Getty Research Institute, Los Angeles (2004.R.10)



15. Lucille Ball and Desi Arnaz House, Palm Springs, Paul R. Williams architect, Built 1954-55, photography by Julius Shulman, 1955, Gelatin Silver Print, © J. Paul Getty Trust. Getty Research Institute, Los Angeles (2004.R.10)



16. Lucille Ball and Desi Arnaz House, Palm Springs, Paul R. Williams architect, Built 1954-55, photography by Julius Shulman, 1955, Gelatin Silver Print, © J. Paul Getty Trust. Getty Research Institute, Los Angeles (2004.R.10)



17. Lucille Ball and Desi Arnaz House, Palm Springs, Paul R. Williams architect, Built 1954-55, photography by Julius Shulman, 1955, Gelatin Silver Print, © J. Paul Getty Trust. Getty Research Institute, Los Angeles (2004.R.10)



18. Beverly Hills Hotel Addition, Beverly Hills, Paul R. Williams architect, Built 1949-50, photography by Julius Shulman, 1950, Gelatin Silver Print, © J. Paul Getty Trust. Getty Research Institute, Los Angeles (2004.R.10)



19. El Mirador Hotel, Palm Springs, Paul. R. Williams architect, Built 1952-53, photography by Julius Shulman, 1953, Gelatin Silver Print, © J. Paul Getty Trust. Getty Research Institute, Los Angeles (2004.R.10)



20. El Mirador Hotel, Palm Springs, Paul. R. Williams architect, Built 1952-53, photography by Julius Shulman, 1953, Gelatin Silver Print, © J. Paul Getty Trust. Getty Research Institute, Los Angeles (2004.R.10)



21. El Mirador Hotel, Palm Springs, Paul. R. Williams architect, Built 1952-53, photography by Julius Shulman, 1953, Gelatin Silver Print, © J. Paul Getty Trust. Getty Research Institute, Los Angeles (2004.R.10)



22. El Mirador Hotel, Palm Springs, Paul. R. Williams architect, Built 1952-53, photography by Julius Shulman, 1953, Gelatin Silver Print, © J. Paul Getty Trust. Getty Research Institute, Los Angeles (2004.R.10)



23. El Mirador Hotel, Palm Springs, Paul. R. Williams architect, Built 1952-53, photography by Julius Shulman, 1953, Gelatin Silver Print, © J. Paul Getty Trust. Getty Research Institute, Los Angeles (2004.R.10)