

Getty News

Paolo Veneziano: Art and Devotion in 14th-Century Venice



1. *Mary Magdalene*, about 1340-1345
Paolo Veneziano (Italian (Venetian), about 1295 - about 1362)
Tempera and gold leaf on panel
Worcester Art Museum, Worcester, MA, Museum Purchase, 1927.19.1
EX.2021.3.13.a



2. *Saint Anthony*, about 1340-1345
Paolo Veneziano (Italian (Venetian), about 1295 - about 1362)
Tempera and gold leaf on panel
Worcester Art Museum, Worcester, MA, Museum Purchase, 1927.19.2
EX.2021.3.13.b



3. *Archangel Michael*, about 1340-1345
Paolo Veneziano (Italian (Venetian), about 1295 - about 1362)
Tempera and gold leaf on panel
Worcester Art Museum, Worcester, MA, Museum Purchase, 1927.19.3
EX.2021.3.13.c



4. *Saint George*, about 1340-1345
Paolo Veneziano (Italian (Venetian), about 1295 - about 1362)
Tempera and gold leaf on panel
Worcester Art Museum, Worcester, MA, Museum Purchase, 1927.19.4
EX.2021.3.13.d



5. *Saint Barbara*, about 1340-1345
Paolo Veneziano (Italian (Venetian), about 1295 - about 1362)
Tempera and gold leaf on panel
Worcester Art Museum, Worcester, MA, Museum Purchase, 1927.19.5
EX.2021.3.13.e



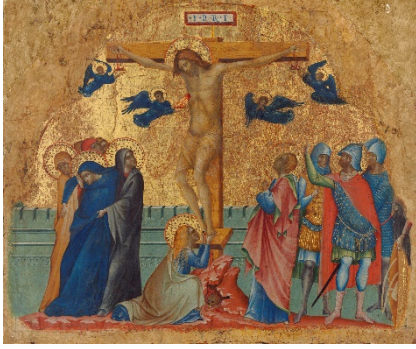
6. *Saint John the Baptist*, about 1340-1345
Paolo Veneziano (Italian (Venetian), about 1295 - about 1362)
Tempera and gold leaf on panel
Worcester Art Museum, Worcester, MA, Museum Purchase, 1927.19.6
EX.2021.3.13.f



7. *Saint Francis*, about 1340-1345
Paolo Veneziano (Italian (Venetian), about 1295 - about 1362)
Tempera and gold leaf on panel
Worcester Art Museum, Worcester, MA, Museum Purchase, 1927.19.7
EX.2021.3.13.g



8. *The Coronation of the Virgin*, 1358
Paolo Veneziano (Italian (Venetian), about 1295 - about 1362) and Giovanni Veneziano (Italian, active about 1345 - about 1358)
Tempera and gold leaf on panel
Unframed: 109.9 × 68.6 cm (43 1/4 × 27 in.)
Framed: 145.4 × 91.4 × 9.8 cm (57 1/4 × 36 × 3 7/8 in.)
The Frick Collection, New York, Purchase, 1930
EX.2021.3.14



9. *The Crucifixion*, about 1340-1345
 Paolo Veneziano (Italian (Venetian), about 1295 - about 1362)
 Tempera and gold leaf on panel
 Unframed: 33.9 × 41.1 cm (13 5/16 × 16 3/16 in.)
 Framed: 37.2 × 45.4 × 5.7 cm (14 5/8 × 17 7/8 × 2 1/4 in.)
 National Gallery of Art, Washington, Samuel H. Kress Collection, 1939.1.143
 EX.2021.3.12



10. *Triptych with the Coronation of the Virgin*, about 1360 – 1370
 Unknown, Italian (Venetian)
 Elephant ivory with traces of polychromy and gilding
 Object (with doors open): H: 26.7 × W: 16.5 × D: 12.7 cm (10 1/2 × 6 1/2 × 5 in.)
 Victoria and Albert Museum
 Image © Victoria and Albert Museum, London
 EX.2021.3.1



11. *Madonna and Child*, about 1340
 Paolo Veneziano (Italian (Venetian), about 1295 - about 1362)
 Tempera and gold leaf on panel
 Unframed: 110.8 × 61.9 cm (43 5/8 × 24 3/8 in.)
 The Norton Simon Foundation, Pasadena, California
 EX.2021.3.9



12. *The Annunciation*, about 1340 – 1345
 Paolo Veneziano (Italian (Venetian), about 1295 - about 1362)
 Tempera and gold leaf on panel
 Framed (Panels hinged (with frames)): 22.5 × 27 × 2.5 cm (8 7/8 × 10 5/8 × 1 in.)
 The J. Paul Getty Museum, Los Angeles
 87.PB.117



13. *The Birth and First Miracle of Saint Nicholas*, 1346
Paolo Veneziano (Italian (Venetian), about 1295–
about 1362)
Tempera and gold leaf on panel
74.5 × 54.5 cm (29 5/16 × 21 7/16 in.)
Gallerie degli Uffizi. Su concessione del Ministero
della cultura
EX.2021.3.4