

Untold Stories: Collecting and Transforming Medieval Manuscripts

February 26 to May 12, 2013

The J. Paul Getty Museum at the Getty Center



1. Unknown
Fragmentary Text Page, about 845
from Fragmentary Leaf from a Bible
Iron gall ink on parchment with tempera
Leaf (cut into 1 cm. (3/8 in.) strips): 41.9 x 34.3 cm (16 1/2 x 13 1/2 in.)
The J. Paul Getty Museum, Los Angeles
Ms. Ludwig I 1, leaf 1 (83.MA.50.1.recto)



2. Unknown
Decorated Initial P, about 845
Leaf from a Bible
Iron gall ink on parchment with tempera
Leaf: 46.4 x 33.7 cm (18 1/4 x 13 1/4 in.)
The J. Paul Getty Museum, Los Angeles
Ms. Ludwig I 1, leaf 10 (83.MA.50.10.recto)



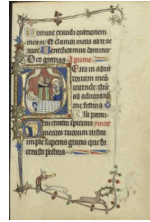
3. Unknown
Initial A: Alexander the Great Defeating Darius, about 1260-70
from Historiated Initial from an antiphonal
Gold paint and tempera colors on parchment
Leaf: 8.9 x 10 cm (3 1/2 x 3 15/16 in.)
The J. Paul Getty Museum, Los Angeles
Ms. Ludwig VI 5, leaf 20 (83.MH.88.20.recto)



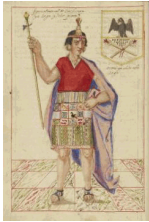
4. Unknown
Marginal Drollery: Hybrid Couple, about 1260-70
from Marginal drollery from an antiphonal
Tempera colors on parchment
Leaf (cutting): 3.2 x 9.5 cm (1 1/4 x 3 3/4 in.)
The J. Paul Getty Museum, Los Angeles
Ms. Ludwig VI 5, leaf 23 (83.MH.88.23.recto)



5. Unknown
 Initials IN, 1153
 from [Breviary](#)
 Tempera colors, gold leaf, gold paint, and ink on parchment
 Leaf: 19.2 x 13.2 cm (7 9/16 x 5 3/16 in.)
 The J. Paul Getty Museum, Los Angeles
 Ms. Ludwig IX 1, fol. 262 (83.ML.97.262)



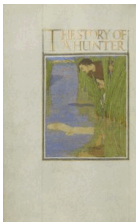
6. Unknown
 Initial V: A Monk in Prayer, about 1300
 from [Ruskin Hours](#)
 Tempera colors, gold leaf, and ink on parchment
 Leaf: 26.4 x 18.3 cm (10 3/8 x 7 3/16 in.)
 The J. Paul Getty Museum, Los Angeles
 Ms. Ludwig IX 3, fol. 76 (83.ML.99.76)



7. Unknown
 Sinchi Roca, 1616
 from [General History of Peru](#)
 Pen and ink and colored washes on paper
 The J. Paul Getty Museum, Los Angeles
 Ms. Ludwig XIII 16, fol. 24v (83.MP.159.24v)



8. Master of the Jardin de vertueuse consolation and assistant
 Flemish, active 3rd quarter of 15th century
[Vasco da Lucena Giving his Work to Charles the Bold](#), about 1470 - 1475
 from [Book of the Deeds of Alexander the Great](#)
 Tempera colors, gold leaf, gold paint, and ink on parchment
 Leaf: 43.2 x 33 cm (17 x 13 in.)
 The J. Paul Getty Museum, Los Angeles
 Ms. Ludwig XV 8, fol. 2v (83.MR.178.2v)



9. Florence Kingsford Cockerell
 English, 1871 - 1949
 A Hunter Seeing a White Bird Reflected in the Water, 1908
 from [The Story of a Hunter](#)
 Tempera, watercolors, gold leaf, and silver and gold paints on parchment bound between pasteboard covered with blue morocco
 Leaf: 21.7 x 13.5 cm (8 9/16 x 5 5/16 in.)
 The J. Paul Getty Museum, Los Angeles
 Ms. Ludwig XV 12, fol. 4v (83.MR.182.4v)

10. John Ruskin
 1819 - 1900
 Modern Painters Volume 3: Of many things, 1904
 Publication
 p. 52: 14.8 x 7.6 cm (5 13/16 x 3 in.)
 Closed: 19.3 x 13.5 x 3 cm (7 5/8 x 5 5/16 x 1 3/16 in.)
 The Getty Research Institute
 83-B9898.v3



11. Master of the Cypresses (Pedro de Toledo?)
Spanish, active Seville, Spain 1430s
or Workshop of Master of the Cypresses (Pedro de Toledo?)
Spanish, active Seville, Spain 1430s
Initial K: Caritas, about 1430-40
from Historiated Initial from a Gradual
Tempera colors, gold leaf, and ink on parchment
Leaf: 36 x 31.4 cm (14 3/16 x 12 3/8 in.)
The J. Paul Getty Museum, Los Angeles
Ms. 15, verso (85.MS.211.verso)



13. Unknown
Duke Albrecht IV and Kunigunde of Austria Adoring the Virgin, about 1400 - 1410, and 1487
from [World Chronicle](#)
Tempera colors, gold, silver paint, and ink on parchment
Leaf: 33.5 x 23.5 cm (13 3/16 x 9 1/4 in.)
The J. Paul Getty Museum, Los Angeles
Ms. 33, fol. 2v (88.MP.70.2v)



15. Coëtivy Master (Henri de Vulcop?)
French, active about 1450 - 1485
[Scene with Philosophy Instructing Boethius](#), about 1460-70
Tempera colors, gold leaf, and gold paint on parchment
Leaf: 7.3 x 17 cm (2 7/8 x 6 11/16 in.)
The J. Paul Getty Museum, Los Angeles
Ms. 42, leaf 1v (91.MS.11.1.verso)



12. Unknown
Camouflaged Hunters Preparing to Attack Deer, about 1430-40
from [Book of the Hunt](#)
Tempera colors, gold paint, silver paint, and gold leaf on parchment
Leaf: 26.4 x 18.4 cm (10 3/8 x 7 1/4 in.)
The J. Paul Getty Museum, Los Angeles
Ms. 27, fol. 109v (87.MR.34.109v)



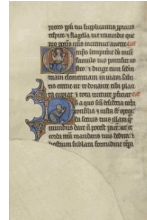
14. Unknown
Initial R: Three Dragons and a Man; A Scribe and a Woman, about 1400 - 1410 with addition in 1487
from [World Chronicle](#)
Tempera colors, gold, silver paint, and ink on parchment
Leaf: 33.5 x 23.5 cm (13 3/16 x 9 1/4 in.)
The J. Paul Getty Museum, Los Angeles
Ms. 33, fol. 3 (88.MP.70.3)



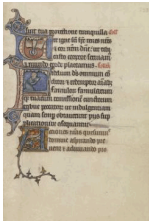
16. Coëtivy Master (Henri de Vulcop?)
French, active about 1450 - 1485
[Scene with Philosophy Instructing Boethius](#), about 1460-70
Miniature from Consolation of Philosophy
Tempera colors, gold leaf, and gold paint on parchment
Leaf: 6 x 17 cm (2 3/8 x 6 11/16 in.)
The J. Paul Getty Museum, Los Angeles
Ms. 42, leaf 2v (91.MS.11.2.verso)



17. Coëtivy Master (Henri de Vulcop?)
 French, active about 1450 - 1485
 Scene with Philosophy Instructing Boethius, about 1460-70
 Cutting from Consolation of Philosophy
 Tempera colors, gold leaf, and gold paint on parchment
 Leaf: 7 x 17 cm (2 3/4 x 6 11/16 in.)
 The J. Paul Getty Museum, Los Angeles
 Ms. 42, leaf 3 (91.MS.11.3.recto)



18. Bute Master
 Franco-Flemish, active about 1260 - 1290
 Initial O: Christ Enthroned; Initial D: A Man in Prayer, about 1270-80
 from [Bute Psalter](#)
 Tempera colors, gold, and iron gall ink on parchment
 Leaf: 17 x 11.9 cm (6 11/16 x 4 11/16 in.)
 The J. Paul Getty Museum, Los Angeles
 Ms. 46, fol. 237v (92.MK.92.237v)



19. Bute Master
 Franco-Flemish, active about 1260 - 1290
 Initial U: The Holy Spirit; Initial F: A Man in Prayer; Initial A, about 1270-80
 from [Bute Psalter](#)
 Tempera colors, gold, and iron gall ink on parchment
 Leaf: 17 x 11.9 cm (6 11/16 x 4 11/16 in.)
 The J. Paul Getty Museum, Los Angeles
 Ms. 46, fol. 238 (92.MK.92.238)



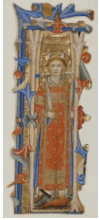
20. Attributed to Bartolomeo Rigossi da Gallarate
 Italian, active about 1460 - 1480
 Initial A: Women at Christ's Tomb, about 1465
 Cutting from an [Antiphonal](#)
 Tempera colors, gold leaf, and ink on parchment
 Leaf: 15.1 x 14.6 cm (5 15/16 x 5 3/4 in.)
 The J. Paul Getty Museum, Los Angeles
 Ms. 47, verso (93.MS.2.verso)



21. Attributed to Bartolomeo Rigossi da Gallarate
 Italian, active about 1460 - 1480
 Initial N: The Resurrected Christ Appearing to the Marys, about 1465
 Cutting from an [Antiphonal](#)
 Leaf (cutting): 15.1 x 14.6 cm (5 15/16 x 5 3/4 in.)
 The J. Paul Getty Museum, Los Angeles
 Ms. 49, recto (93.MS.8.recto)



22. Attributed to Maître François
 French, active about 1460 - 1480
 Soldiers Leading a Prisoner from a Walled City, about 1460-70
 Leaf from a Manuscript
 Tempera colors, gold leaf, and gold paint on parchment
 Leaf: 18.1 x 12.1 cm (7 1/8 x 4 3/4 in.)
 The J. Paul Getty Museum, Los Angeles
 Ms. 51, verso (93.MS.31.verso)



23. Lippo Vanni
Italian, active about 1340 - about 1375
Initial I: A Martyr Saint, about 1375 - 1400
from Historiated Initial from an Antiphonal
Tempera colors, gold leaf, and ink on parchment
Leaf: 30.2 x 11.5 cm (11 7/8 x 4 1/2 in.)
The J. Paul Getty Museum, Los Angeles
Ms. 53, recto (93.MS.38.recto)



24. Master B.F.
Italian, active about 1495 - 1510
Initial D: Noah Directing the Construction of the Ark,
about 1495-1510
Cutting from an Antiphonal
Tempera colors, gold leaf, and ink on parchment
Leaf: 16.8 x 17 cm (6 5/8 x 6 11/16 in.)
The J. Paul Getty Museum, Los Angeles
Ms. 56, recto (94.MS.18.recto)

25. Unknown
Armchair, about 1620-30
Mahogany with inlaid oak, spindle tree, and lignum
vitae
Object: H: 102.6 x W: 62 x D: 51.7 cm (H: 40 3/8 x
W: 24 7/16 x D: 20 3/8 in.)
The J. Paul Getty Museum, Los Angeles
95.DA.22.5



26. Francesco di Antonio del Chierico
Italian, 1433 - 1484, active 1452
Initial S: Job, about 1450 - 1475
Cutting from a choir book
Tempera and gold on parchment
The J. Paul Getty Museum, Los Angeles
Ms. 74 a (2003.88.a)



27. Francesco di Antonio del Chierico
Italian, 1433 - 1484, active 1452
Initial S: Job, about 1450 - 1475
Cutting from a choir book
Tempera and gold on parchment
The J. Paul Getty Museum, Los Angeles
Ms. 74 a, recto (2003.88.a.recto)

28. Francesco di Antonio del Chierico
Italian, 1433 - 1484, active 1452
Top Border, about 1450 - 1475
Cutting from a choir book
Tempera and gold on parchment
The J. Paul Getty Museum, Los Angeles
Ms. 74 b (2003.88.b)



29. Francesco di Antonio del Chierico
Italian, 1433 - 1484, active 1452
Initial I: A Martyr Saint, about 1450 - 1475
Cutting from a choir book
Tempera and gold on parchment
The J. Paul Getty Museum, Los Angeles
Ms. 74 b, recto (2003.88.b.recto)



31. Francesco di Antonio del Chierico
Italian, 1433 - 1484, active 1452
Decorative Border, about 1450 - 1475
Cutting from a choir book
Tempera and gold on parchment
The J. Paul Getty Museum, Los Angeles
Ms. 74 c, recto (2003.88.c.recto)



33. Francesco di Antonio del Chierico
Italian, 1433 - 1484, active 1452
Decorative Border, about 1450 - 1475
Cutting from a choir book
Tempera and gold on parchment
The J. Paul Getty Museum, Los Angeles
Ms. 74 d, recto (2003.88.d.recto)

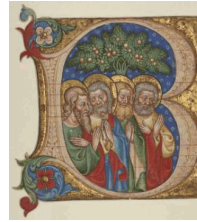
30. Francesco di Antonio del Chierico
Italian, 1433 - 1484, active 1452
Side Border, about 1450 - 1475
Cutting from a choir book
Tempera and gold on parchment
The J. Paul Getty Museum, Los Angeles
Ms. 74 c (2003.88.c)

32. Francesco di Antonio del Chierico
Italian, 1433 - 1484, active 1452
Bottom Border, about 1450 - 1475
Cutting from a choir book
Tempera and gold on parchment
The J. Paul Getty Museum, Los Angeles
Ms. 74 d (2003.88.d)

34. Francesco di Antonio del Chierico
Italian, 1433 - 1484, active 1452
Music Text Replacement Page, about 1450 - 1475
Cutting from a choir book
Tempera and gold on parchment
The J. Paul Getty Museum, Los Angeles
Ms. 74 e (2003.88.e)



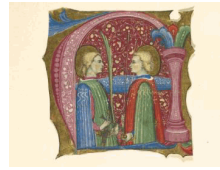
35. Francesco di Antonio del Chierico
 Italian, 1433 - 1484, active 1452
 Initial I: A Martyr Saint, about 1450 - 1475
 Cutting from a choir book
 Tempera and gold on parchment
 The J. Paul Getty Museum, Los Angeles
 Ms. 74 e, recto (2003.88.e.recto)



36. Olivetan Master
 Italian, active about 1425 - about 1450
 Initial B: Four Saints, about 1450
 Cutting from a choir book
 Tempera and gold on parchment
 Leaf: 14.3 x 13.5cm (5 5/8 x 5 5/16 in.)
 The J. Paul Getty Museum, Los Angeles
 Ms. 75, recto (2003.89.recto)



37. Designed by Lorenzo Monaco
 Italian, about 1370 - 1423 or 1424
 and completed by Zanobi di Benedetto Strozzi
 Italian, 1412 - 1468
 and Battista di Biagio Sanguini
 Italian, 1393 - 1451
 Initial V: The Ascension of Christ, designed about 1410;
 completed about 1431
 Cutting from a gradual
 Tempera and gold on parchment
 Leaf: 40.2 x 32.7 cm (15 13/16 x 12 7/8 in.)
 The J. Paul Getty Museum, Los Angeles
 Ms. 78, recto (2003.104.recto)



38. Frate Nebridio
 Italian, died before 1503, active second half of the 15th
 century
 Initial A: Saints Maurice and Theofredus, about 1460 -
 1480
 Cutting from an antiphonal
 Tempera and gold leaf on parchment
 Leaf: 11.5 x 11.5 cm (4 1/2 x 4 1/2 in.)
 The J. Paul Getty Museum, Los Angeles
 Ms. 91, recto (2005.21.recto)



39. Belbello da Pavia
 Italian (Lombard), died after 1473, active about 1430 -
 1473
 Initial A: Young Christ Blessing, about 1467 - 1470
 Leaf from Antiphonal P of San Giorgio Maggiore
 Tempera and gold on parchment
 Leaf: 56.2 x 40.7 cm (22 1/8 x 16 in.)
 The J. Paul Getty Museum, Los Angeles
 Ms. 96, verso (2005.29.verso)



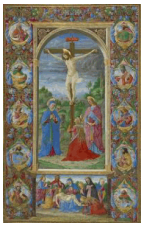
40. Unknown
 The Marriage at Cana, about 1190 - 1200
 from *Life of Christ with added devotional texts and
 illuminations*
 from *Illustrated Vita Christi, with devotional
 supplements*
 Tempera colors and gold leaf on parchment
 Leaf: 11.9 x 17 cm (4 11/16 x 6 11/16 in.)
 The J. Paul Getty Museum, Los Angeles
 Ms. 101, fol. 65v (2008.3.65v)



41. Unknown
Christ before Annas, about 1450 - 1475
from [Life of Christ with added devotional texts and illuminations](#)
from [Illustrated Vita Christi, with devotional supplements](#)
Tempera colors and gold leaf on parchment
Leaf: 11.9 x 17 cm (4 11/16 x 6 11/16 in.)
The J. Paul Getty Museum, Los Angeles
Ms. 101, fol. 66 (2008.3.66)



42. Unknown maker, Nuremberg School
Rainerius de Pisis
Italian, died about 1348
Anton Koberger
German, about 1440/1445 - 1513
Decorated Initial L, 1474
from Pantheologia Volume Two
Printing ink and tempera colors on handmade paper
Leaf: 47.6 x 33.2 cm (18 3/4 x 13 1/16 in.)
The J. Paul Getty Museum, Los Angeles
PR.BK.1, vol. 2, fol. 442 (2009.1.2.442)



43. Giuliano Amadei
Italian, active 1446 - died 1496
[The Crucifixion](#), about 1484 - 1492
Leaf from the Missal of Innocent VIII
Tempera colors and gold on parchment
Leaf: 39.7 x 24.1 cm (15 5/8 x 9 1/2 in.)
The J. Paul Getty Museum, Los Angeles
Ms. 110, recto (2012.2.recto)

44. J. O. (John Obadiah) Westwood
1805 - 1893
Sketches and proofs for Illuminated illustrations of the Bible: copied from select manuscripts of the Middle Ages, 1846-1847
Galley proofs
Baptism of Christ (folio 3 of 5): 20.6 x 15.4 cm (8 1/8 x 6 1/16 in.)
Closed: 32.7 x 27 x 6 cm (12 7/8 x 10 5/8 x 2 3/8 in.)
The Getty Research Institute
920003

45. Giulio Clovio
Croatian, 1498 - 1578, active Italy
The Holy Family, about 1560
from Miniature of The Holy Family
Tempera colors and gold on parchment on a wooden panel
Leaf: 25.1 x 18.6 cm (9 7/8 x 7 5/16 in.)
James E. and Elizabeth J. Ferrell
L.2004.57.recto

46. Circle of Giulio Clovio
Croatian, 1498 - 1578, active Italy
Saint Paul, about 1550
from Miniature of Saint Paul
Tempera colors and gold on parchment
Leaf: 21.6 x 16.2 cm (8 1/2 x 6 3/8 in.)
James E. and Elizabeth J. Ferrell
L.2004.58.recto

47. The Spanish Forger
Spanish, active late 19th or early 20th century
Augustus and the Tiburtine Sibyl, late 1800s
from Augustus and the Tiburtine Sibyl
Pigment on parchment
Unframed: 30 x 28 cm (11 13/16 x 11 in.)
James E. and Elizabeth J. Ferrell
L.2013.1.recto

48. Julia Morgan
American, 1872 - 1957
Manuscript Lampshade, 1935
Wrought iron
Object: H: 176.5 x W: 64.8 x Diam.: 64.8 cm (69 1/2 x
25 1/2 x 25 1/2 in.)
Hearst Castle®/CA State Parks
L.2013.2



The J. Paul Getty Museum

January 14, 2013

Additional information about some of these works of art can be found by searching [getty.edu](http://www.getty.edu/art/gettyguide/) at <http://www.getty.edu/art/gettyguide/>

© 2013 J. Paul Getty Trust