

True Grit: American Prints from 1900 to 1950

October 15, 2019 to January 19, 2020
The J. Paul Getty Museum at the Getty Center



1. Armin Landeck
American, 1905 - 1984
The Cat's Paw, 1934
Drypoint and aquatint
Image: 21.3 × 17.5 cm (8 3/8 × 6 7/8 in.)
Los Angeles County Museum of Art, Graphic Arts Council Fund
Photo © Museum Associates/LACMA
© The Estate of Armin Landeck
EX.2019.6.1



2. Edward Hopper
American, 1882 - 1967
Night on the El Train, 1918
Etching on Umbria Paper
Image: 18.8 × 20 cm (7 3/8 × 7 7/8 in.)
Los Angeles County Museum of Art, Gift of William Walker
Photo © Museum Associates/LACMA
© 2019 Heirs of Josephine Hopper / Licensed by Artists Rights Society (ARS), NY
EX.2019.6.2



3. Edward Hopper
American, 1882 - 1967
Evening Wind, 1921
Etching on Umbria Paper
Image: 17.5 × 21 cm (6 7/8 × 8 1/4 in.)
Los Angeles County Museum of Art, Gift of William Walker
Photo © Museum Associates/LACMA
© 2019 Heirs of Josephine Hopper / Licensed by Artists Rights Society (ARS), NY
EX.2019.6.3



4. George Wesley Bellows
American, 1882 - 1925
A Stag at Sharkey's, 1917
Lithograph
Image: 47.9 × 61 cm (18 7/8 × 24 in.)
Los Angeles County Museum of Art, Gift of the 1993 Collectors Committee
Photo © Museum Associates/LACMA
EX.2019.6.4



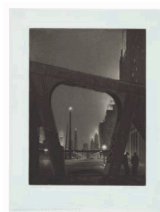
5. George Wesley Bellows
American, 1882 - 1925
Splinter Beach, 1916
Lithograph
Image: 37.8 × 50 cm (14 7/8 × 19 11/16 in.)
Los Angeles County Museum of Art, Gift of Mr. and Mrs.
Ira Gershwin
Photo © Museum Associates/LACMA
EX.2019.6.5



6. George Wesley Bellows
American, 1882 - 1925
Why Don't They Go to the Country for Vacation?, 1913
Transfer drawing in black oil-based printing ink,
overworked with brush and black ink and scraping, on
wove paper
Sheet: 63.5 × 57.2 cm (25 × 22 1/2 in.)
Los Angeles County Museum of Art, Los Angeles County
Fund
Photo © Museum Associates/LACMA
EX.2019.6.6



7. George Wesley Bellows
American, 1882 - 1925
Dance in a Madhouse, 1917
Lithograph
Image: 46.7 × 61.5 cm (18 3/8 × 24 3/16 in.)
Los Angeles County Museum of Art, Gift of Vice-Admiral
and Mrs. Howard Fithian Kingman
Photo © Museum Associates/LACMA
EX.2019.6.7



8. Gerald K. Geerlings
American, 1897 - 1998
Jeweled City (Chicago), 1931
Etching and aquatint
Image: 39.7 × 29.9 cm (15 5/8 × 11 3/4 in.)
Los Angeles County Museum of Art, Gift of General and
Mrs. William M. Garland
Photo © Museum Associates/ LACMA
EX.2019.6.8



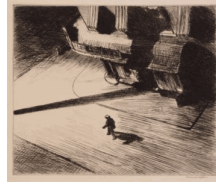
9. John Sloan
American, 1871 - 1951
Night Windows, 1910
Etching on Arches paper
Image: 13.2 × 17.2 cm (5 3/16 × 6 3/4 in.)
Los Angeles County Museum of Art, Mr. and Mrs. William
Preston Harrison Collection
Photo © Museum Associates/ LACMA
© 2019 Delaware Art Museum / Artists Rights Society
(ARS), New York
EX.2019.6.9



10. John Taylor Arms
American, 1887 - 1953
Gates of the City, 1922
Etching and aquatint printed in brown and light green
Image: 25.5 × 20.5 cm (10 1/16 × 8 1/16 in.)
Los Angeles County Museum of Art, Purchased with
funds provided by Graphic Arts Council donors, Mr.
Werner Boeninger, Mr. and Mrs. Philip Meltzer, Mrs.
Mary S. Ruiz, and Mrs. Estelle Williams, and the Graphic
Arts Council Fund
Photo © Museum Associates/ LACMA
EX.2019.6.10



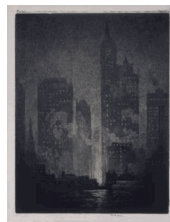
11. Peggy Bacon
American, 1895 - 1987
Help!, 1927
Drypoint
Image: 25 × 20 cm (9 13/16 × 7 7/8 in.)
Los Angeles County Museum of Art, Los Angeles County Fund
Photo © Museum Associates/ LACMA
© The Estate of Peggy Bacon
EX.2019.6.12



12. Edward Hopper
American, 1882 - 1967
Night Shadows, 1921
Etching
Plate: 17.1 × 21 cm (6 3/4 × 8 1/4 in.)
Collection UCLA Grunwald Center for the Graphic Arts, Hammer Museum. Bequest of Walter Otto Schneider.
Photo: Brian Forrest / © Hammer Museum, Los Angeles
© 2019 Heirs of Josephine Hopper / Licensed by Artists Rights Society (ARS), NY
EX.2019.6.13



13. John Sloan
American, 1871 - 1951
Turning Out the Light, 1905
Etching
Plate: 12.7 × 17.8 cm (5 × 7 in.)
Collection UCLA Grunwald Center for the Graphic Arts, Hammer Museum. Purchase.
Photo: Brian Forrest / © Hammer Museum, Los Angeles
© 2019 Delaware Art Museum / Artists Rights Society (ARS), New York
EX.2019.6.14



14. Joseph Pennell
American, 1857 - 1926
From Cortlandt Street Ferry, 1908
Aquatint and sandpaper-ground etching
Plate: 32.9 × 25.1 cm (12 15/16 × 9 7/8 in.)
Collection UCLA Grunwald Center for the Graphic Arts, Hammer Museum. Purchased with funds provided by various donors.
Photo: Brian Forrest / © Hammer Museum, Los Angeles
EX.2019.6.15



15. Louis Lozowick
American, born Russia, 1892 - 1973
Through Brooklyn Bridge Cables, 1938
Lithograph
Plate: 24.3 × 32.4 cm (9 9/16 × 12 3/4 in.)
Collection UCLA Grunwald Center for the Graphic Arts, Hammer Museum. Gift of Mr. Irving Stone.
Photo: Brian Forrest / © Hammer Museum, Los Angeles
© Louis Lozowick. Courtesy of the estate of the artist and Mary Ryan Gallery, New York
EX.2019.6.16



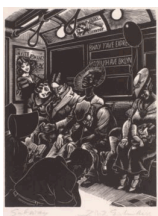
16. Arnold Rönnebeck
American, born Germany, 1885 - 1947
Wall Street, 1925
Lithograph
Image: 31.8 × 17.1 cm (12 1/2 × 6 3/4 in.)
The Huntington Library, Art Collections, and Botanical Gardens. Gift of Hannah S. Kully
EX.2019.6.17



17. Ellison Hoover
American, 1888 - 1955
Manhattan Midnight, About 1930
Lithograph
Image: 30.3 × 22.1 cm (11 15/16 × 8 11/16 in.)
The Huntington Library, Art Collections, and Botanical Gardens. Gift of Hannah S. Kully
EX.2019.6.19



18. Florence Kent Hunter
American, 1917 - 1989
Stuyvesant Park, About 1938
Lithograph
Image: 27.9 × 42.2 cm (11 × 16 5/8 in.)
The Huntington Library, Art Collections, and Botanical Gardens. Gift of Hannah S. Kully
EX.2019.6.20



19. Fritz Eichenberg
American, born Germany, 1901 - 1990
Subway, 1934
Wood engraving
Image: 15.9 × 12.1 cm (6 1/4 × 4 3/4 in.)
The Huntington Library, Art Collections, and Botanical Gardens. Gift of Hannah S. Kully
© 2019 Estate of Fritz Eichenberg / Licensed by VAGA at Artists Rights Society (ARS), NY
EX.2019.6.21



20. George Wesley Bellows
American, 1882 - 1925
In the Park, Dark, 1916
Lithograph
Image: 42.5 × 53.7 cm (16 3/4 × 21 1/8 in.)
The Huntington Library, Art Collections, and Botanical Gardens. Gift of Hannah S. Kully
EX.2019.6.22



21. George Wesley Bellows
American, 1882 - 1925
Solitude, 1917
Lithograph
Image: 43.8 × 38.1 cm (17 1/4 × 15 in.)
The Huntington Library, Art Collections, and Botanical Gardens. Gift of Hannah S. Kully
EX.2019.6.23



22. George Wesley Bellows
American, 1882 - 1925
Benediction in Georgia, 1916
Lithograph
Image: 40 × 50.5 cm (15 3/4 × 19 7/8 in.)
The Huntington Library, Art Collections, and Botanical Gardens. Gift of Hannah S. Kully
EX.2019.6.24



23. Howard Norton Cook
American, 1901 - 1980
The New Yorker, 1930
Lithograph
Image: 44.8 × 21.9 cm (17 5/8 × 8 5/8 in.)
The Huntington Library, Art Collections, and Botanical Gardens. Gift of Hannah S. Kully
EX.2019.6.25



24. Ida Abelman
American, 1910 - 2002
Wonders of Our Time, 1937
Lithograph
Image: 29.5 × 38.4 cm (11 5/8 × 15 1/8 in.)
The Huntington Library, Art Collections, and Botanical Gardens. Gift of Hannah S. Kully
EX.2019.6.26



25. Kyra Markham
American, 1891 - 1967
July 4th, 1936, 1936
Lithograph
Image: 40.6 × 32.4 cm (16 × 12 3/4 in.)
The Huntington Library, Art Collections, and Botanical Gardens. Gift of Hannah S. Kully
EX.2019.6.27



26. Mabel Dwight
American, 1875 - 1955
Night Work, 1931
Lithograph
Image: 25.4 × 19.4 cm (10 × 7 5/8 in.)
The Huntington Library, Art Collections, and Botanical Gardens. Gift of Hannah S. Kully
EX.2019.6.28



27. Martin Lewis
American, born Australia, 1881 - 1962
Glow of the City, 1929
Drypoint on ivory laid paper
Image: 28.6 × 36.2 cm (11 1/4 × 14 1/4 in.)
The Huntington Library, Art Collections, and Botanical Gardens. Purchased with funds from Russel I. and Hannah S. Kully.
© Estate of Martin Lewis
EX.2019.6.29



28. Martin Lewis
American, born Australia, 1881 - 1962
Down to the Sea at Night, 1929
Drypoint and sand-ground etching
Image: 20.3 × 33 cm (8 × 13 in.)
The Huntington Library, Art Collections, and Botanical Gardens. Gift of Hannah S. Kully
© Estate of Martin Lewis
EX.2019.6.31



29. Miguel Covarrubias
Mexican, 1904 - 1957
The Lindy Hop, 1936
Lithograph
Image: 33 × 25.4 cm (13 × 10 in.)
The Huntington Library, Art Collections, and Botanical
Gardens. Gift of Hannah S. and Russel I. Kully
© Maria Elena Rico Covarrubias
EX.2019.6.32



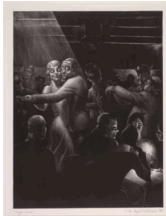
30. Millard Sheets
American, 1907 - 1989
Family Flats, About 1933
Lithograph on cream wove paper
Image: 39.7 × 55.6 cm (15 5/8 × 21 7/8 in.)
The Huntington Library, Art Collections, and Botanical
Gardens. Gift of Mrs. Homer D. Crotty
© 1933 Estate of Millard Sheets
EX.2019.6.33



31. Peggy Bacon
American, 1895 - 1987
Aesthetic Pleasure, 1936
Drypoint on white wove paper
Image: 15.2 × 21.6 cm (6 × 8 1/2 in.)
The Huntington Library, Art Collections, and Botanical
Gardens. Gift of Mrs. Homer D. Crotty
© The Estate of Peggy Bacon
EX.2019.6.34



32. Peggy Bacon
American, 1895 - 1987
Rural Retreat, 1930
Lithograph
Image: 27.9 × 38.1 cm (11 × 15 in.)
The Huntington Library, Art Collections, and Botanical
Gardens. Gift of Hannah S. Kully
© The Estate of Peggy Bacon
EX.2019.6.35



33. Kyra Markham
American, 1891 - 1967
Night Club, 1935
Lithograph
Image: 35.2 × 26.7 cm (13 7/8 × 10 1/2 in.)
Collection of Hannah S. Kully
EX.2019.6.36



34. Mabel Dwight
American, 1875 - 1955
The Clinch, 1928
Lithograph
Image: 24.1 × 29.5 cm (9 1/2 × 11 5/8 in.)
Collection of Hannah S. Kully
EX.2019.6.37



35. Peggy Bacon
American, 1895 - 1987
Frenzied Effort, 1925
Drypoint on white wove paper
Unframed: 14.9 × 22.9 cm (5 7/8 × 9 in.)
The Huntington Library, Art Collections, and Botanical
Gardens. Gift of Mrs. Homer D. Crotty
© The Estate of Peggy Bacon
EX.2019.6.38



36. George Wesley Bellows
American, 1882 - 1925
Artists Judging Works of Art, 1916
Lithograph
Unframed: 36.5 × 47.9 cm (14 3/8 × 18 7/8 in.)
The Huntington Library, Art Collections, and Botanical
Gardens. Gift of Hannah S. Kully
EX.2019.6.39



37. George Wesley Bellows
American, 1882 - 1925
The Studio, Christmas, 1916
Lithograph
Unframed: 13.8 × 10.8 cm (5 7/16 × 4 1/4 in.)
The Huntington Library, Art Collections, and Botanical
Gardens. Gift of Hannah S. Kully
EX.2019.6.40



38. Mabel Dwight
American, 1875 - 1955
Greetings from the House of Weyhe, 1928
Lithograph
Unframed: 17.9 × 21.4 cm (7 1/16 × 8 7/16 in.)
The Huntington Library, Art Collections, and Botanical
Gardens. Gift of Margery and Maurice Katz
EX.2019.6.41

