

Transcending Time: The Medieval Book of Hours

August 31, 2021 to February 20, 2022

The J. Paul Getty Museum at the Getty Center



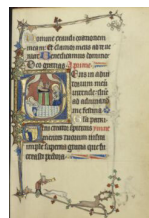
1. Jean Pierre Rousselet
French, active about 1677 - 1736
[Decorated Title Page](#), about 1720-30
from Prayers for the Mass
Tempera and gold leaf on paper bound between
pasteboard covered outside in original dark blue
morocco, and inside in red morocco in fanfare style
Leaf: 11.9 × 7.1 cm (4 11/16 × 2 13/16 in.)
The J. Paul Getty Museum, Los Angeles
Ms. Ludwig V 8, fol. 1 (83.MG.83.1)



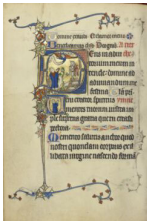
2. Jean Pierre Rousselet
French, active about 1677 - 1736
[Supper at Emmaus](#), about 1720-30
from Prayers for the Mass
Tempera colors and gold leaf on paper
Leaf: 11.9 × 7.1 cm (4 11/16 × 2 13/16 in.)
The J. Paul Getty Museum, Los Angeles
Ms. Ludwig V 8, fol. 20 (83.MG.83.20)



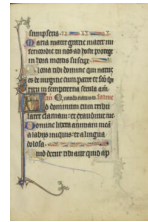
3. Unknown French
[Initial C: Clerics Singing from a Choir Book](#), about 1390
from Psalter
Tempera colors, gold leaf, and ink on parchment
Leaf: 22.4 × 16.8 cm (8 13/16 × 6 5/8 in.)
The J. Paul Getty Museum, Los Angeles
Ms. Ludwig VIII 5, fol. 105v (83.MK.96.105v)



4. Unknown French
[Initial D: The Nativity](#); [Initial V: A Monk in Prayer](#), about
1300
from Ruskin Hours
Tempera colors, gold leaf, and ink on parchment
Leaf: 26.4 × 18.3 cm (10 3/8 × 7 3/16 in.)
The J. Paul Getty Museum, Los Angeles
Ms. Ludwig IX 3, fol. 76 (83.ML.99.76)



5. Unknown French
Initial D: The Annunciation to the Shepherds; Initial V: A Man in Prayer, about 1300
 from Ruskin Hours
 Tempera colors, gold leaf, and ink on parchment
 Leaf: 26.4 × 18.3 cm (10 3/8 × 7 3/16 in.)
 The J. Paul Getty Museum, Los Angeles
 Ms. Ludwig IX 3, fol. 81v (83.ML.99.81v)



6. Unknown French
Initial A: A Devil Aiming a Bow and Arrow at a Man Kneeling in Prayer, about 1300
 from Ruskin Hours
 Tempera colors, gold leaf, and ink on parchment
 Leaf: 26.4 × 18.3 cm (10 3/8 × 7 3/16 in.)
 The J. Paul Getty Museum, Los Angeles
 Ms. Ludwig IX 3, fol. 82 (83.ML.99.82)



7. Unknown French
The Annunciation, about 1390
 from Book of Hours
 Tempera colors, gold leaf, gold paint, and ink on parchment
 Leaf: 18.9 × 13.2 cm (7 7/16 × 5 3/16 in.)
 The J. Paul Getty Museum, Los Angeles
 Ms. Ludwig IX 4, fol. 14 (83.ML.100.14)



8. Unknown French
The Flight into Egypt, about 1400-1410
 from Book of Hours
 Tempera colors, gold leaf, gold paint, and ink on parchment
 Leaf: 18.9 × 13.2 cm (7 7/16 × 5 3/16 in.)
 The J. Paul Getty Museum, Los Angeles
 Ms. Ludwig IX 4, fol. 59v (83.ML.100.59v)



9. Follower of the Egerton Master
 French / Netherlandish, active about 1405 - 1420
A Woman in Prayer before the Virgin and Child, about 1410
 from Book of Hours
 Tempera colors, gold leaf, gold paint, and ink on parchment
 Leaf: 19.1 × 14 cm (7 1/2 × 5 1/2 in.)
 The J. Paul Getty Museum, Los Angeles
 Ms. Ludwig IX 5, fol. 19 (83.ML.101.19)



10. Follower of the Egerton Master
 French / Netherlandish, active about 1405 - 1420
The Nativity, about 1410
 from Book of Hours
 Tempera colors, gold leaf, gold paint, and ink on parchment
 Leaf: 19.1 × 14 cm (7 1/2 × 5 1/2 in.)
 The J. Paul Getty Museum, Los Angeles
 Ms. Ludwig IX 5, fol. 58v (83.ML.101.58v)



11. Workshop of the Bedford Master
 French, active first half of 15th century
March Calendar Page: The Annunciation, about 1440–50
 from Book of Hours
 Tempera colors, gold leaf, gold paint, and ink on parchment
 Leaf: 23.5 × 16.4 cm (9 1/4 × 6 7/16 in.)
 The J. Paul Getty Museum, Los Angeles
 Ms. Ludwig IX 6, fol. 3v (83.ML.102.3v)



12. Workshop of the Bedford Master
 French, active first half of 15th century
April Calendar Page: Picking Flowers; Taurus, about 1440–50
 from Book of Hours
 Tempera colors, gold leaf, gold paint, and ink on parchment
 Leaf: 23.5 × 16.4 cm (9 1/4 × 6 7/16 in.)
 The J. Paul Getty Museum, Los Angeles
 Ms. Ludwig IX 6, fol. 4 (83.ML.102.4)



13. Workshop of the Bedford Master
 French, active first half of 15th century
November Calendar Page: Saint Catherine, about 1440–50
 from Book of Hours
 Tempera colors, gold leaf, gold paint, and ink on parchment
 Leaf: 23.5 × 16.4 cm (9 1/4 × 6 7/16 in.)
 The J. Paul Getty Museum, Los Angeles
 Ms. Ludwig IX 6, fol. 11v (83.ML.102.11v)



14. Workshop of the Bedford Master
 French, active first half of 15th century
December Calendar Page: Slaughtering a Pig; Capricorn, about 1440–50
 from Book of Hours
 Tempera colors, gold leaf, gold paint, and ink on parchment
 Leaf: 23.5 × 16.4 cm (9 1/4 × 6 7/16 in.)
 The J. Paul Getty Museum, Los Angeles
 Ms. Ludwig IX 6, fol. 12 (83.ML.102.12)



15. Circle of Jean Colombe
 French, active 1467 - 1491
The Flight into Egypt, about 1480s
 from Hours of Anthony of Burgundy
 Tempera colors, gold, silver, and ink on parchment
 Closed: 15.2 × 11 cm (6 × 4 5/16 in.)
 Private collection
 L.2021.70, fol. 163



16. Workshop of Willem Vrelant
 Flemish, died 1481, active 1454 - 1481
The Flight into Egypt, early 1460s
 from Arenberg Hours
 Tempera colors, gold leaf, and ink on parchment
 Leaf: 25.6 × 17.3 cm (10 1/16 × 6 13/16 in.)
 The J. Paul Getty Museum, Los Angeles
 Ms. Ludwig IX 8, fol. 113 (83.ML.104.113)



17. Unknown Flemish
A Bearded Saint with Cruciform Staff Presenting a Kneeling Woman to Saint Margaret, after 1460
 from Book of Hours
 Tempera colors, gold leaf, and ink on parchment
 Leaf: 17.1 × 12.2 cm (6 3/4 × 4 13/16 in.)
 The J. Paul Getty Museum, Los Angeles
 Ms. Ludwig IX 9, fol. 13v (83.ML.105.13v)



18. Master of Jacques of Luxembourg
 French, active about 1460 - 1470
Office of the Dead, about 1466-70
 from Book of Hours
 Tempera colors, gold leaf, silver leaf, and ink on parchment
 Leaf: 16.4 × 11.4 cm (6 7/16 × 4 1/2 in.)
 The J. Paul Getty Museum, Los Angeles
 Ms. Ludwig IX 11, fol. 104 (83.ML.107.104)



19. Unknown Italian
The Flight into Egypt, about 1460
 from Book of Hours
 Tempera colors, gold, and ink on parchment
 Leaf: 17.1 × 12.1 cm (6 3/4 × 4 3/4 in.)
 The J. Paul Getty Museum, Los Angeles
 Ms. Ludwig IX 12, fol. 50v (83.ML.108.50v)



20. Guglielmo Giraldi
 Italian, active 1445 - 1489
Saint Catherine of Bologna, about 1469
 from Gualenghi-d'Este Hours
 Tempera colors, gold paint, gold leaf, and ink on parchment
 Leaf: 10.8 × 7.9 cm (4 1/4 × 3 1/8 in.)
 The J. Paul Getty Museum, Los Angeles
 Ms. Ludwig IX 13, fol. 185v (83.ML.109.185v)



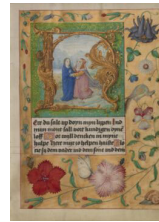
21. Unknown German
March Calendar Page: Pruning Trees; Aries, early 1500s
 from Book of Hours
 Tempera colors on parchment
 Leaf: 13.5 × 10.5 cm (5 5/16 × 4 1/8 in.)
 The J. Paul Getty Museum, Los Angeles
 Ms. Ludwig IX 16, fol. 3 (83.ML.112.3)



22. Unknown German
June Calendar Page: Mowing; Cancer, early 1500s
 from Book of Hours
 Tempera colors on parchment
 Leaf: 13.5 × 10.5 cm (5 5/16 × 4 1/8 in.)
 The J. Paul Getty Museum, Los Angeles
 Ms. Ludwig IX 16, fol. 6 (83.ML.112.6)



23. Workshop of Gerard Horenbout
Flemish, 1465 - 1541
The Annunciation, about 1500
from Book of Hours
Tempera colors and gold paint on parchment
Leaf: 15.2 × 11.1 cm (6 × 4 3/8 in.)
The J. Paul Getty Museum, Los Angeles
Ms. Ludwig IX 17, fol. 15v (83.ML.113.15v)



24. Workshop of Gerard Horenbout
Flemish, 1465 - 1541
Initial H: the Visitation, about 1500
from Book of Hours
Tempera colors and gold paint on parchment
Leaf: 15.2 × 11.1 cm (6 × 4 3/8 in.)
The J. Paul Getty Museum, Los Angeles
Ms. Ludwig IX 17, fol. 16 (83.ML.113.16)



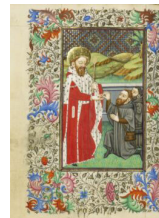
25. Unknown French
The Visitation, 1544
from Book of Hours
Tempera colors and gold paint on uterine parchment
Leaf: 14.3 × 8.1 cm (5 5/8 × 3 3/16 in.)
The J. Paul Getty Museum, Los Angeles
Ms. Ludwig IX 20, fol. 24v (83.ML.116.24v)



26. Unknown French
The Birth of the Virgin, 1544
from Book of Hours
Tempera colors and gold paint on uterine parchment
Leaf: 14.3 × 8.1 cm (5 5/8 × 3 3/16 in.)
The J. Paul Getty Museum, Los Angeles
Ms. Ludwig IX 20, fol. 101v (83.ML.116.101v)



27. Master of Guillebert de Mets
Flemish, active about 1410 - 1450
The Crucifixion, about 1450-55
from Book of Hours
Tempera colors, gold leaf, and ink on parchment
Leaf: 19.4 × 14 cm (7 5/8 × 5 1/2 in.)
The J. Paul Getty Museum, Los Angeles
Ms. 2, fol. 23v (84.ML.67.23v)



28. Master of Sir John Fastolf
French, active before about 1420 - about 1450
Saint Edward the Confessor, about 1430-40
from Book of Hours
Tempera colors, gold leaf, and ink on parchment
Leaf: 12.1 × 9.2 cm (4 3/4 × 3 5/8 in.)
The J. Paul Getty Museum, Los Angeles
Ms. 5, fol. 42v (84.ML.723.42v)



29. Jean Bourdichon
French, 1457 - 1521
The Man of Sorrows at the Last Judgment, about 1480-85
from Katherine Hours
Tempera colors, gold, and ink on parchment
Leaf: 16.4 × 11.6 cm (6 7/16 × 4 9/16 in.)
The J. Paul Getty Museum, Los Angeles
Ms. 6, fol. 83 (84.ML.746.83)



30. Jean Fouquet
French, born about 1415 - 1420, died before 1481
Coat of Arms Held by a Woman, 1455
from Hours of Simon de Varie
Tempera colors, gold paint, gold leaf, and ink on parchment
Leaf: 11.4 × 8.3 cm (4 1/2 × 3 1/4 in.)
The J. Paul Getty Museum, Los Angeles, Partial gift of Gerald F. Borrmann
Ms. 7, fol. 1 (85.ML.27.1)



31. Dunois Master
French, active Paris, France until 1463
David in Prayer, 1455
from Hours of Simon de Varie
Tempera colors, gold paint, gold leaf, and ink on parchment
Leaf: 11.4 × 8.3 cm (4 1/2 × 3 1/4 in.)
The J. Paul Getty Museum, Los Angeles, Partial gift of Gerald F. Borrmann
Ms. 7, fol. 45 (85.ML.27.45)



32. Master of Guillaume Lambert
French, active about 1475 - 1485
A Burial, 1478
from Book of Hours
Tempera colors, gold paint, and iron gall ink on parchment bound between pasteboard covered with brown jansenist morocco
Leaf: 14.6 × 9.8 cm (5 3/4 × 3 7/8 in.)
The J. Paul Getty Museum, Los Angeles
Ms. 10, fol. 116 (85.ML.80.116)



33. Catholic Church (Maker)
Simon Vostre, French (Publisher)
Publisher's Mark of Simon Vostre, 1508
Woodcut
Closed: 25.2 × 17.4 × 1.7 cm (9 15/16 × 6 7/8 × 11/16)
Getty Research Institute
85-B20755
34. Master of the Harvard Hannibal
French, active Paris, France, 1415 - about 1430
The Flight into Egypt, about 1420-30
from Book of Hours
Tempera, gold paint, gold leaf, and silver paint on parchment
Leaf: 17.9 × 13 cm (7 1/16 × 5 1/8 in.)
The J. Paul Getty Museum, Los Angeles
Ms. 19, fol. 59 (86.ML.481.59)



35. Master of the Harvard Hannibal
French, active Paris, France, 1415 - about 1430
The Last Judgment, about 1420-30
from Book of Hours
Tempera, gold paint, gold leaf, and silver paint on parchment
Leaf: 17.9 × 13 cm (7 1/16 × 5 1/8 in.)
The J. Paul Getty Museum, Los Angeles
Ms. 19, fol. 169 (86.ML.481.169)



36. Boucicaut Master and Workshop
French, active about 1390 - 1430
A Patron Presented to the Virgin and Child, about 1415-20
from Book of Hours
Tempera colors, gold paint, gold leaf, and ink on parchment
Leaf: 20.5 × 14.8 cm (8 1/16 × 5 13/16 in.)
The J. Paul Getty Museum, Los Angeles
Ms. 22, fol. 137 (86.ML.571.137)



37. Unknown Flemish
Arms of Marguerite Crohin, about 1480-85 (?)
from Crohin-La Fontaine Hours
Tempera colors and gold on parchment
Leaf: 20.5 × 14.8 cm (8 1/16 × 5 13/16 in.)
The J. Paul Getty Museum, Los Angeles
Ms. 23, fol. 13 (86.ML.606.13)



38. Unknown Flemish
Arms of Lois de la Fontaine, about 1480-85 (?)
from Crohin-La Fontaine Hours
Tempera colors and gold on parchment
Leaf: 20.5 × 14.8 cm (8 1/16 × 5 13/16 in.)
The J. Paul Getty Museum, Los Angeles
Ms. 23, fol. 29 (86.ML.606.29)



39. Lieven van Lathem
Flemish, about 1430 - 1493
Charles the Bold Presented by Saint George, about 1471
from Prayer Book of Charles the Bold
Tempera colors, gold leaf, gold paint, silver paint, and ink on parchment
Leaf: 12.4 × 9.2 cm (4 7/8 × 3 5/8 in.)
The J. Paul Getty Museum, Los Angeles
Ms. 37, fol. 6 (89.ML.35.6)



40. Masters of Dirc van Delf
Dutch, active about 1400 - about 1410
The Crucifixion, about 1405-10
from Book of Hours
Tempera colors and gold on parchment
Leaf: 16.5 × 11.7 cm (6 1/2 × 4 5/8 in.)
The J. Paul Getty Museum, Los Angeles
Ms. 40, fol. 61v (90.ML.139.61v)



41. Masters of Dirc van Delf
Dutch, active about 1400 - about 1410
Mass for the Dead, about 1405-10
from Book of Hours
Tempera colors, gold leaf, and ink on parchment
Leaf: 16.5 × 11.7 cm (6 1/2 × 4 5/8 in.)
The J. Paul Getty Museum, Los Angeles
Ms. 40, fol. 138v (90.ML.139.138v)



42. Masters of Dirc van Delf
Dutch, active about 1400 - about 1410
Initial D: Four Souls in Hell, about 1405-10
from Book of Hours
Tempera colors, gold leaf, and ink on parchment
Leaf: 16.5 × 11.7 cm (6 1/2 × 4 5/8 in.)
The J. Paul Getty Museum, Los Angeles
Ms. 40, fol. 139 (90.ML.139.139)

43. James Trissel, 1930-1999 (Designer)
Colorado College (Publisher)
Compline, 1991
from *The Cycle of the day: A Book of Hours*
Letterpress
Closed: 38 × 52.5 × 4 cm (14 15/16 × 20 11/16 × 1 9/16)
Getty Research Institute
91-B32188

44. Frans Masereel
1889 - 1972
The Walk, 1922
from *My book of hours*
Woodcut
Closed: 17.3 × 12.6 × 3 cm (6 13/16 × 4 15/16 × 1 3/16)
Getty Research Institute
91-B36422



45. Georges Trubert
French, active Provence, France 1469 - 1508
The Flight into Egypt, about 1480-90
from Book of Hours
Tempera colors, gold leaf, gold and silver paint, and ink
on parchment
Leaf: 11.4 × 8.6 cm (4 1/2 × 3 3/8 in.)
The J. Paul Getty Museum, Los Angeles
Ms. 48, fol. 67 (93.ML.6.67)

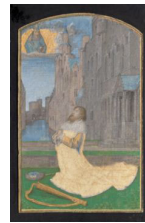
46. Catholic Church (Maker)
Chez la veuve Grangé (Printer)
French, founded 1758
The Crucifixion (frontispiece); *Title Page*, 1758
from Book of Hours
Woodcut
Closed: 17.6 × 11 × 5 cm (6 15/16 × 4 5/16 × 1 15/16 in.)
Getty Research Institute
93-B3519



47. Spitz Master
French, active about 1415 - 1425
A Burial, about 1420
from Book of Hours
Tempera colors, gold, and ink on parchment
Leaf: 20.2 × 14.9 cm (7 15/16 × 5 7/8 in.)
The J. Paul Getty Museum, Los Angeles
Ms. 57, fol. 194 (94.ML.26.194)



49. Master of Cardinal Bourbon
French, about 1480 - 1500
Mary Spinning Wool, about 1500
from Poncher Hours
Tempera colors, ink and gold on parchment
Leaf: 13.3 × 8.7 cm (5 1/4 × 3 7/16 in.)
The J. Paul Getty Museum, Los Angeles
Ms. 109, fol. 121 (2011.40.121)



48. Pierre Gringore (Printer)
The Holy Spirit, 1525
from Book of Hours
Printed book with woodcuts
Closed: 21 × 15 × 2.7 cm (8 1/4 × 5 7/8 × 1 1/16 in.)
Getty Research Institute
1405-327
50. Master of the Houghton Miniatures
Flemish, active about 1476 - 1480
King David in Penitence, about 1480
Leaf from a prayer book
Tempera colors and gold on parchment
Leaf: 12.5 × 7.8 cm (4 15/16 × 3 1/16 in.)
The J. Paul Getty Museum, Los Angeles
Ms. 117 (2018.78)

51. Unknown French
The Holy Trinity, about 1498-1504
from Book of Hours
Tempera colors and ink on parchment
Private collection
(L.2020.7)