

Sacred Landscapes: Nature in Renaissance Manuscripts

October 10, 2017 to January 14, 2018

The J. Paul Getty Museum at the Getty Center



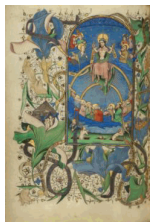
1. Attributed to Rinaldo da Siena
Italian, active 1270s
[Initial G: The Stigmatization of Saint Francis](#), about 1275
Leaf from a gradual
Tempera colors and gold leaf on parchment
Initial: 18.1 × 12.9 cm (7 1/8 × 5 1/16 in.)
The J. Paul Getty Museum, Los Angeles
Ms. 71, verso (2003.15.verso)



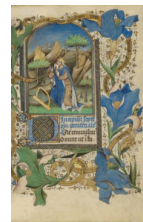
2. Unknown Italian, Neapolitan or Avignon School
[Saint Francis Receiving the Stigmata and an Angel Crowning Saints Ceilia and Valerian](#), 1330s
Tempera and gold leaf on panel
Panel (with engaged frame): 31.3 × 45.7 × 1.9 cm (12 5/16 × 18 × 3/4 in.)
The J. Paul Getty Museum, Los Angeles
86.PB.490

2. Unknown Italian, Neapolitan or Avignon School
[The Stigmatization of St. Francis](#), 1330s
Tempera and gold leaf on panel
The J. Paul Getty Museum, Los Angeles
86.PB.490.a

2. Unknown Italian, Neapolitan or Avignon School
[Angel Crowning Saints Cecilia and Valerian](#), 1330s
Tempera and gold leaf on panel
The J. Paul Getty Museum, Los Angeles
86.PB.490.b



3. Master of Guillebert de Mets
Flemish, active about 1410 - 1450
[The Last Judgment](#), about 1450-55
from Book of Hours
Tempera colors, gold leaf, and ink on parchment
Leaf: 19.4 × 14 cm (7 5/8 × 5 1/2 in.)
The J. Paul Getty Museum, Los Angeles
Ms. 2, fol. 127v (84.ML.67.127v)



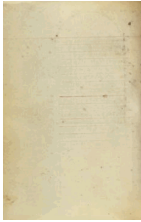
4. Master of Guillebert de Mets
Flemish, active about 1410 - 1450
[David in Prayer](#), about 1450-55
from Book of Hours
Tempera colors, gold leaf, and ink on parchment
Leaf: 19.4 × 14 cm (7 5/8 × 5 1/2 in.)
The J. Paul Getty Museum, Los Angeles
Ms. 2, fol. 128 (84.ML.67.128)

October 4, 2017

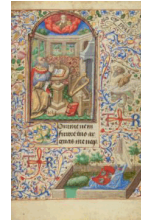
Page 1 of 6

Additional information about some of these works of art can be found by searching [getty.edu](http://www.getty.edu/art/collection/) at <http://www.getty.edu/art/collection/>

© 2017 J. Paul Getty Trust



5. Unknown
Blank Ruled Page, 1455
from Hours of Simon de Varie
Tempera colors, gold paint, gold leaf, and ink on parchment
Leaf: 11.4 × 8.3 cm (4 1/2 × 3 1/4 in.)
The J. Paul Getty Museum, Los Angeles, Partial gift of Gerald F. Borrmann
Ms. 7, fol. 44v (85.ML.27.44v)

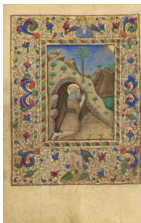


6. Dunois Master
French, active Paris, France until 1463
[David in Prayer](#), 1455
from Hours of Simon de Varie
Tempera colors, gold paint, gold leaf, and ink on parchment
Leaf: 11.4 × 8.3 cm (4 1/2 × 3 1/4 in.)
The J. Paul Getty Museum, Los Angeles, Partial gift of Gerald F. Borrmann
Ms. 7, fol. 45 (85.ML.27.45)

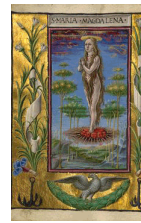
7. Unknown
[Decorated Text Page](#), early 1460s
from Arenberg Hours
Tempera colors, gold leaf, and ink on parchment
Leaf: 25.6 × 17.3 cm (10 1/16 × 6 13/16 in.)
The J. Paul Getty Museum, Los Angeles
Ms. Ludwig IX 8, fol. 45v (83.ML.104.45v)



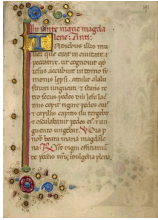
8. Willem Vrelant
Flemish, died 1481, active 1454 - 1481
[Saint Christopher Carrying the Christ Child](#), early 1460s
from Arenberg Hours
Tempera colors, gold leaf, and ink on parchment
Leaf: 25.6 × 17.3 cm (10 1/16 × 6 13/16 in.)
The J. Paul Getty Museum, Los Angeles
Ms. Ludwig IX 8, fol. 46 (83.ML.104.46)



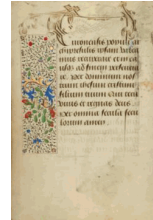
9. Unknown
[The Hermit Honofrius in Prayer](#), about 1460
from Book of Hours
Tempera colors, gold, and ink on parchment
Leaf: 17.1 × 12.1 cm (6 3/4 × 4 3/4 in.)
The J. Paul Getty Museum, Los Angeles
Ms. Ludwig IX 12, fol. 329v (83.ML.108.329v)



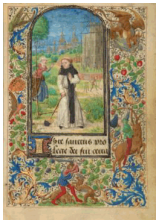
10. Taddeo Crivelli
Italian, died about 1479, active about 1451 - 1479
[Mary Magdalene Borne Aloft](#), about 1469
from Gualenghi-d'Este Hours
Tempera colors, gold paint, gold leaf, and ink on parchment
Leaf: 10.8 × 7.9 cm (4 1/4 × 3 1/8 in.)
The J. Paul Getty Museum, Los Angeles
Ms. Ludwig IX 13, fol. 190v (83.ML.109.190v)



11. Unknown
 Decorated Text Page, about 1469
 from Gualenghi-d'Este Hours
 Tempera colors, gold paint, gold leaf, and ink on parchment
 Leaf: 10.8 × 7.9 cm (4 1/4 × 3 1/8 in.)
 The J. Paul Getty Museum, Los Angeles
 Ms. Ludwig IX 13, fol. 191 (83.ML.109.191)



12. Nicolas Spierinc
 Flemish, active 1455 - 1499
 Decorated Text Page, 1469
 from Prayer Book of Charles the Bold
 Tempera colors, gold leaf, gold paint, silver paint, and ink on parchment
 Leaf: 12.4 × 9.2 cm (4 7/8 × 3 5/8 in.)
 The J. Paul Getty Museum, Los Angeles
 Ms. 37, fol. 37v (89.ML.35.37v)



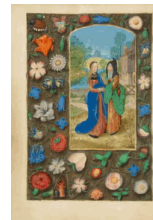
13. Lieven van Lathem
 Flemish, about 1430 - 1493
 Saint Fiacre and Houpdée, 1469
 from Prayer Book of Charles the Bold
 Tempera colors, gold leaf, gold paint, silver paint, and ink on parchment
 Leaf: 12.4 × 9.2 cm (4 7/8 × 3 5/8 in.)
 The J. Paul Getty Museum, Los Angeles
 Ms. 37, fol. 38 (89.ML.35.38)



14. Master of the Houghton Miniatures
 Flemish, active about 1476 - 1480
 Annunciation to the Shepherds, late 1470s-about 1480
 Miniature from the Emerson-White Hours
 Tempera colors and gold paint on parchment
 Leaf [cutting]: 12.5 × 9 cm (4 15/16 × 3 9/16 in.)
 The J. Paul Getty Museum, Los Angeles
 Ms. 60, recto (95.ML.53.recto)



15. Jean Bourdichon
 French, 1457 - 1521
 Job on the Dung Heap, about 1480-85
 from Katherine Hours
 Tempera colors, gold, and ink on parchment
 Leaf: 16.4 × 11.6 cm (6 7/16 × 4 9/16 in.)
 The J. Paul Getty Museum, Los Angeles
 Ms. 6, fol. 96 (84.ML.746.96)



16. Master of the Dresden Prayer Book or workshop
 Flemish, active about 1480 - 1515
 The Visitation, possibly about 1480-85
 from Crohin-La Fontaine Hours
 Tempera colors and gold on parchment
 Leaf: 20.5 × 14.8 cm (8 1/16 × 5 13/16 in.)
 The J. Paul Getty Museum, Los Angeles
 Ms. 23, fol. 71v (86.ML.606.71v)



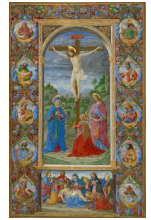
17. Unknown
The Visitation, possibly about 1480-85
 from Crohin-La Fontaine Hours
 Tempera colors and gold on parchment
 Leaf: 20.5 × 14.8 cm (8 1/16 × 5 13/16 in.)
 The J. Paul Getty Museum, Los Angeles
 Ms. 23, fol. 72 (86.ML.606.72)



18. Unknown
The Virgin and Child in a Red Rose with a Rosary, about 1480-90
 from Life of Christ with added devotional texts and illuminations
 from Illustrated Vita Christi, with devotional supplements
 Tempera colors and gold leaf on parchment
 Leaf: 11.9 × 17 cm (4 11/16 × 6 11/16 in.)
 The J. Paul Getty Museum, Los Angeles
 Ms. 101, fol. 78v (2008.3.78v)



19. Unknown
The Enclosed Garden, Sealed Fountain, Stella Maris, and Shining Sun, about 1480-90
 from Life of Christ with added devotional texts and illuminations
 from Illustrated Vita Christi, with devotional supplements
 Tempera colors and gold leaf on parchment
 Leaf: 11.9 × 17 cm (4 11/16 × 6 11/16 in.)
 The J. Paul Getty Museum, Los Angeles
 Ms. 101, fol. 79 (2008.3.79)



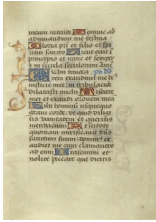
20. Giuliano Amadei
 Italian, active 1446 - died 1496
The Crucifixion, 1484-92
 Leaf from the Missal of Innocent VIII
 Tempera colors and gold on parchment
 Leaf: 39.7 × 24.1 cm (15 5/8 × 9 1/2 in.)
 The J. Paul Getty Museum, Los Angeles
 Ms. 110, recto (2012.2.recto)



21. Master B.F.
 Italian, active about 1495 - 1510
Initial D: Noah Directing the Construction of the Ark, about 1495-1510
 Cutting from an Antiphonal
 Tempera colors, gold leaf, and ink on parchment
 Leaf: 16.8 × 17 cm (6 5/8 × 6 11/16 in.)
 The J. Paul Getty Museum, Los Angeles
 Ms. 56, recto (94.MS.18.recto)



22. Master of the Chronique scandaleuse
 French, active about 1493 - 1510
Noli me tangere, about 1500
 from Poncher Hours
 Tempera colors, ink and gold on parchment
 Leaf: 13.3 × 8.7 cm (5 1/4 × 3 7/16 in.)
 The J. Paul Getty Museum, Los Angeles
 Ms. 109, fol. 130v (2011.40.130v)



23. Unknown
The Visitation, possibly about 1480-85
 from Poncher Hours
 Tempera colors, ink and gold on parchment
 Leaf: 13.3 × 8.7 cm (5 1/4 × 3 7/16 in.)
 The J. Paul Getty Museum, Los Angeles
 Ms. 109, fol. 131 (2011.40.131)



24. Unknown maker, Nuremberg School
The Virgin and Child on a Grassy Bench, about 1500
 Pen and brown ink; strip at top added later
 19.2 × 15.6 cm (7 9/16 × 6 1/8 in.)
 The J. Paul Getty Museum, Los Angeles
 92.GA.103



25. Master of James IV of Scotland
 Flemish, before 1465 - about 1541
The Assumption of the Virgin, about 1510-20
 from Spinola Hours
 Tempera colors, gold, and ink on parchment
 Leaf: 23.2 × 16.7 cm (9 1/8 × 6 9/16 in.)
 The J. Paul Getty Museum, Los Angeles
 Ms. Ludwig IX 18, fol. 148v (83.ML.114.148v)



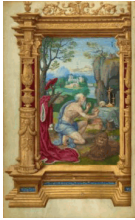
26. Master of James IV of Scotland
 Flemish, before 1465 - about 1541
The Crucifixion, about 1510-20
 from Spinola Hours
 Tempera colors, gold, and ink on parchment
 Leaf: 23.2 × 16.7 cm (9 1/8 × 6 9/16 in.)
 The J. Paul Getty Museum, Los Angeles
 Ms. Ludwig IX 18, fol. 149 (83.ML.114.149)



27. Simon Bening
 Flemish, about 1483 - 1561
Scenes from the Creation, about 1525-30
 from Prayer Book of Cardinal Albrecht of Brandenburg
 Tempera colors, gold paint, and gold leaf on parchment
 Leaf: 16.8 × 11.4 cm (6 5/8 × 4 1/2 in.)
 The J. Paul Getty Museum, Los Angeles
 Ms. Ludwig IX 19, fol. 7v (83.ML.115.7v)



28. Simon Bening
 Flemish, about 1483 - 1561
Scenes from the Creation, about 1525-30
 from Prayer Book of Cardinal Albrecht of Brandenburg
 Tempera colors, gold paint, and gold leaf on parchment
 Leaf: 16.8 × 11.4 cm (6 5/8 × 4 1/2 in.)
 The J. Paul Getty Museum, Los Angeles
 Ms. Ludwig IX 19, fol. 8 (83.ML.115.8)



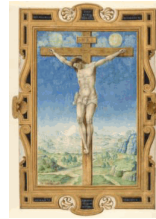
29. Master of the Getty Epistles
 French, active about 1520 - about 1549
[Saint Jerome](#), about 1528-30
 from Getty Epistles
 Tempera colors and gold paint on parchment
 Leaf: 16.5 × 10.3 cm (Leaf: 6 1/2 × 4 1/16 in.)
 The J. Paul Getty Museum, Los Angeles
 Ms. Ludwig I 15, fol. 1v (83.MA.64.1v)



30. Unknown
[Decorated Text Page](#), about 1528-30
 from Getty Epistles
 Tempera colors and gold paint on parchment
 Leaf: 16.5 × 10.3 cm (Leaf: 6 1/2 × 4 1/16 in.)
 The J. Paul Getty Museum, Los Angeles
 Ms. Ludwig I 15, fol. 2 (83.MA.64.2)



31. Simon Bening
 Flemish, about 1483 - 1561
[Martyrdom of Saint Sebastian](#), about 1535-40
 Leaf from the Munich-Montserrat Hours
 Tempera colors, gold paint, and ink on parchment
 Leaf: 13.7 × 10 cm (5 3/8 × 3 15/16 in.)
 The J. Paul Getty Museum, Los Angeles
 Ms. 3, leaf 2v (84.ML.83.2.verso)



32. Vincent Raymond
 French, died 1557, active by 1535
[The Crucifixion](#), about 1545
 Miniature from a Missal
 Tempera and gold on parchment
 Leaf: 37.2 × 26 cm (14 5/8 × 10 1/4 in.)
 The J. Paul Getty Museum, Los Angeles
 Ms. 85, recto (2003.116.recto)



33. Simon Bening
 Flemish, about 1483 - 1561
[Villagers on Their Way to Church](#), about 1550
 from Calendar Miniatures from a Book of Hours
 Tempera colors and gold paint on parchment
 Leaf [cutting]: 5.6 × 9.6 cm (2 3/16 × 3 3/4 in.)
 The J. Paul Getty Museum, Los Angeles
 Ms. 50, recto (93.MS.19.recto)



34. Jacopo Ligozzi
 Italian, 1547 - 1626
[La Verna: The Chapel of the Blessed Giovanni della Verna](#), 1607
 Pen, brown ink, and brown wash on paper
 39.1 × 25.1 cm (15 3/8 × 9 7/8 in.)
 The J. Paul Getty Museum, Los Angeles
 97.GA.69

