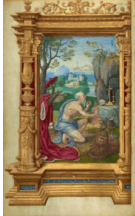


All that Glitters: Life at the Renaissance Court

August 28 to December 2, 2018

The J. Paul Getty Museum at the Getty Center



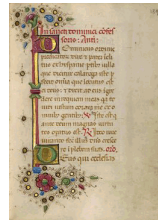
1. Master of the Getty Epistles
French, active about 1520 - about 1549
[Saint Jerome](#), about 1528-30
from Getty Epistles
Tempera colors and gold paint on parchment
Leaf: 16.5 × 10.3 cm (Leaf: 6 1/2 × 4 1/16 in.)
The J. Paul Getty Museum, Los Angeles
Ms. Ludwig I 15, fol. 1v (83.MA.64.1v)



2. Master of the Getty Epistles
French, active about 1520 - about 1549
[Decorated Text Page](#), about 1528 - 1530
from Getty Epistles
Tempera colors and gold paint on parchment
Leaf: 16.5 × 10.3 cm (Leaf: 6 1/2 × 4 1/16 in.)
The J. Paul Getty Museum, Los Angeles
Ms. Ludwig I 15, fol. 2 (83.MA.64.2)



3. Taddeo Crivelli
Italian, died about 1479, active about 1451 - 1479
[Saint Dominic](#), about 1469
from Gualenghi-d'Este Hours
Tempera colors, gold paint, gold leaf, and ink on parchment
Leaf: 10.8 × 7.9 cm (4 1/4 × 3 1/8 in.)
The J. Paul Getty Museum, Los Angeles
Ms. Ludwig IX 13, fol. 188v (83.ML.109.188v)



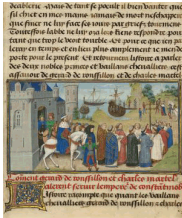
4. Unknown Italian artist
[Decorated Text Page](#), about 1469
from Gualenghi-d'Este Hours
Tempera colors, gold paint, gold leaf, and ink on parchment
Leaf: 10.8 × 7.9 cm (4 1/4 × 3 1/8 in.)
The J. Paul Getty Museum, Los Angeles
Ms. Ludwig IX 13, fol. 189 (83.ML.109.189)



5. Unknown French artist
Birth of the Virgin, 1544
 from Book of Hours
 Tempera colors and gold paint on uterine parchment
 Leaf: 14.3 × 8.1 cm (5 5/8 × 3 3/16 in.)
 The J. Paul Getty Museum, Los Angeles
 Ms. Ludwig IX 20, fol. 101v (83.ML.116.101v)



6. Unknown French artist
Frontispiece with Coat of Arms of Claude de Lorraine, Duke of Aumale, about 1557
 from Chronicle of Normandy
 Tempera colors on parchment
 Leaf: 29.1 × 19.1 cm (11 7/16 × 7 1/2 in.)
 The J. Paul Getty Museum, Los Angeles
 Ms. Ludwig XIII 4, fol. 1 (83.MP.147.1)



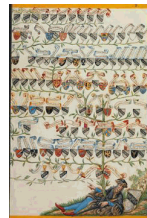
7. Loyset Liédet
 Flemish, active about 1448 - 1478
 and Pol Fruit
 Flemish, active about 1468
The Byzantine Emperor Welcoming Roussillon and Martel, written 1463-65; illuminated 1467-72
 Cutting from History of Charles Martel
 Tempera colors, gold leaf, and gold paint on parchment
 Leaf: 23.2 × 19.5 cm (9 1/8 × 7 11/16 in.)
 The J. Paul Getty Museum, Los Angeles
 Ms. Ludwig XIII 6, leaf 2 (83.MP.149.2.recto)



8. Jörg Ziegler
 German, early 16th century - 1574/1577
Eitelfriedrich I Hohenzollern, about 1572
 from Chronicle of the Hohenzollern Family
 Pen and ink, colored washes, tempera, and gold paint on parchment
 Leaf: 35.2 × 27.8 cm (13 7/8 × 10 15/16 in.)
 The J. Paul Getty Museum, Los Angeles
 Ms. Ludwig XIII 11, fol. 18 (83.MP.154.18)



9. Unknown German artist
Family Tree from Friedrich and Anthony Derrer, about 1626-1711
 from Genealogy of the Derrer Family
 Tempera colors with gold and silver highlights on parchment
 Leaf: 37.6 × 26 cm (14 13/16 × 10 1/4 in.)
 The J. Paul Getty Museum, Los Angeles
 Ms. Ludwig XIII 12, fol. 7v (83.MP.155.7v)



10. Unknown German artist
Family Tree from Friedrich and Anthony Derrer, about 1626-1711
 from Genealogy of the Derrer Family
 Tempera colors with gold and silver highlights on parchment
 Leaf: 37.6 × 26 cm (14 13/16 × 10 1/4 in.)
 The J. Paul Getty Museum, Los Angeles
 Ms. Ludwig XIII 12, fol. 8 (83.MP.155.8)



11. Unknown German artist
A Tournament Contest, about 1560-70
 from Tournament Book
 Tempera colors and gold and silver paint on paper bound between original pasteboard covered with original brown calf
 Leaf: 43 × 28.9 cm (16 15/16 × 11 3/8 in.)
 The J. Paul Getty Museum, Los Angeles
 Ms. Ludwig XV 14, fol. 27v (83.MR.184.27v)



12. Unknown German artist
A Tournament Contest, about 1560-70
 from Tournament Book
 Tempera colors and gold and silver paint on paper bound between original pasteboard covered with original brown calf
 Leaf: 43 × 28.9 cm (16 15/16 × 11 3/8 in.)
 The J. Paul Getty Museum, Los Angeles
 Ms. Ludwig XV 14, fol. 28 (83.MR.184.28)



13. Unknown French artist
Chess Problem, late 14th century
 from Book of Chess Problems
 Tempera colors and gold leaf on parchment
 Leaf: 24.8 × 16.8 cm (9 3/4 × 6 5/8 in.)
 The J. Paul Getty Museum, Los Angeles
 Ms. Ludwig XV 15, fol. 39v (83.MR.185.39v)



14. Unknown French artist
Chess Problem, late 14th century
 from Book of Chess Problems
 Tempera colors and gold leaf on parchment
 Leaf: 24.8 × 16.8 cm (9 3/4 × 6 5/8 in.)
 The J. Paul Getty Museum, Los Angeles
 Ms. Ludwig XV 15, fol. 40 (83.MR.185.40)



15. Unknown French artist
Pilgrim Flask with Salamander Mounts, about 1550-1600
 Free-blown dichroic glass, pewter mounts
 Object: H: 33.5 × W: 22.5 cm (13 3/16 × 8 7/8 in.)
 The J. Paul Getty Museum, Los Angeles
 84.DK.519



16. Unknown Italian artist
Ribbed Goblet, 1475-1500
 Free- and mold-blown colorless and cobalt-blue glass with gold leaf, enamel, and applied decoration
 Object: H: 18.57 × Diam. [lip]: 9.05cm (H: 7 5/16 × Diam. [lip]: 3 9/16 in.)
 The J. Paul Getty Museum, Los Angeles
 84.DK.533



17. Jacques Bailly
French, 1634 - 1679
Emblem for Louis XIV, about 1663-68
from Emblem for Louis XIV (fol. 11)
Gouache, gold, and ink on parchment Leaf:
37.8 × 25.2 cm (14 7/8 × 9 15/16 in.)
The J. Paul Getty Museum, Los Angeles
Ms. 11, leaf 1 (85.MS.118.1.recto)



18. Jacques Bailly
French, 1634 - 1679
Emblem for Louis XIV, about 1663-68 from
Emblem for Louis XIV (fol. 16)
Gouache, gold, and ink on parchment Leaf:
38.7 × 2.4 cm (15 1/4 × 15/16 in.)
The J. Paul Getty Museum, Los Angeles
Ms. 11, leaf 2 (85.MS.118.2.recto)



19. Jacques Bailly
French, 1634 - 1679
Emblem for Louis XIV, about 1663-68 from
Emblem for Louis XIV (fol. 2)
Gouache, gold, and ink on parchment
Leaf: 38.6 × 25.7 cm (15 3/16 × 10 1/8 in.)
The J. Paul Getty Museum, Los Angeles
Ms. 11, leaf 3 (85.MS.118.3.recto)



20. Jacques Bailly
French, 1634 - 1679
Emblem for Louis XIV, about 1663-68 from
Emblem for Louis XIV (fol. 5)
Gouache, gold, and ink on parchment
Leaf: 39.4 × 27.1 cm (15 1/2 × 10 11/16 in.)
The J. Paul Getty Museum, Los Angeles
Ms. 11, leaf 4 (85.MS.118.4.recto)



21. Jacques Bailly
French, 1634 - 1679
Emblem for Louis XIV, about 1663-68 from
Emblem for Louis XIV (fol. 15)
Gouache, gold, and ink on parchment
Leaf: 37.1 × 25.4 cm (14 5/8 × 10 in.)
The J. Paul Getty Museum, Los Angeles
Ms. 11, leaf 5 (85.MS.118.5.recto)



22. Jacques Bailly
French, 1634 - 1679
Emblem for Louis XIV, about 1663-68 from
Emblem for Louis XIV (fol. 17)
Gouache, gold, and ink on parchment
Leaf: 38.9 × 25.7 cm (15 5/16 × 10 1/8 in.)
The J. Paul Getty Museum, Los Angeles
Ms. 11, leaf 6 (85.MS.118.6.recto)



23. Jacques Bailly
French, 1634 - 1679
Emblem for Louis XIV, about 1663-68 from
Emblem for Louis XIV (fol. 22)
Gouache, gold, and ink on parchment
Leaf: 38.3 × 26 cm (15 1/16 × 10 1/4 in.)
The J. Paul Getty Museum, Los Angeles
Ms. 11, leaf 7 (85.MS.118.7.recto)



24. Jacques Bailly
French, 1634 - 1679
Emblem for Louis XIV, about 1663-68 from
Emblem for Louis XIV (fol. 3)
Gouache, gold, and ink on parchment
Leaf: 37.1 × 25.6 cm (14 5/8 × 10 1/16 in.)
The J. Paul Getty Museum, Los Angeles
Ms. 11, leaf 8 (85.MS.118.8.recto)



25. Jacques Bailly
French, 1634 - 1679
Emblem for Louis XIV, about 1663-68 from
Emblem for Louis XIV (fol. 19)
Gouache, gold, and ink on parchment
Leaf: 36.4 × 25.6 cm (14 5/16 × 10 1/16 in.)
The J. Paul Getty Museum, Los Angeles
Ms. 11, leaf 9 (85.MS.118.9.recto)



26. Jacques Bailly
French, 1634 - 1679
Emblem for Louis XIV, about 1663-68
from Emblem for Louis XIV (fol. 4)
Gouache and gold on parchment
Leaf: 37.5 × 25.1 cm (14 3/4 × 9 7/8 in.)
The J. Paul Getty Museum, Los Angeles
Ms. 11a, leaf 1 (85.MS.212.1.recto)



27. Jacques Bailly
French, 1634 - 1679
Emblem for Louis XIV, about 1663-68
from Emblem for Louis XIV (fol. 9)
Gouache and gold on parchment
Leaf: 36.7 × 25.4 cm (14 7/16 × 10 in.)
The J. Paul Getty Museum, Los Angeles
Ms. 11a, leaf 2 (85.MS.212.2.recto)



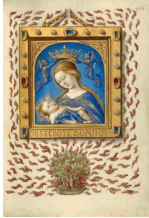
28. Jacques Bailly
French, 1634 - 1679
Emblem for Louis XIV, about 1663-68
from Emblem for Louis XIV (fol. 13)
Gouache and gold on parchment
Leaf: 37.5 × 25.4 cm (14 3/4 × 10 in.)
The J. Paul Getty Museum, Los Angeles
Ms. 11a, leaf 3 (85.MS.212.3.recto)



29. Unknown French artist
Hunters Pursuing a Deer, about 1430-40
from Book of the Hunt
Tempera colors, gold paint, silver paint, and gold leaf on parchment
Leaf: 26.4 × 18.4 cm (10 3/8 × 7 1/4 in.)
The J. Paul Getty Museum, Los Angeles
Ms. 27, fol. 61v (87.MR.34.61v)



30. Monogrammist AS
German, active 1530
Idolatry of Solomon, about 1530
Pen and dark brown ink
21.3 × 32.5 cm (8 3/8 × 12 13/16 in.)
The J. Paul Getty Museum, Los Angeles
89.GA.10



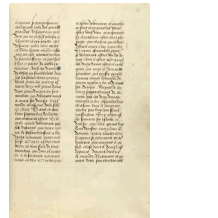
31. Georges Trubert
French, active Provence, France 1469 - 1508
Madonna of the Burning Bush, about 1480-90
from Book of Hours
Tempera colors, gold leaf, gold and silver paint, and ink on parchment
Leaf: 11.4 × 8.6 cm (4 1/2 × 3 3/8 in.)
The J. Paul Getty Museum, Los Angeles
Ms. 48, fol. 154 (93.ML.6.154)



32. Unknown German artist
Saint George with the Arms of Speth, 1517
Pot-metal, colorless, and flashed glass, vitreous paint, and silver stain; lead came
Object: H: 54.3 × W: 46.4 × D: 1 cm (H: 21 3/8 × W: 18 1/4 × D: 3/8 in.)
The J. Paul Getty Museum, Los Angeles
2003.64



33. Master of the Getty Lalaing
Flemish, active about 1530
Jacques de Lalaing Arriving at a Joust with the Counts of Maine and Saint Pol, about 1530
from Book of the Deeds of Jacques de Lalaing
Tempera colors, gold leaf, gold paint, and ink on parchment
Leaf: 36.4 × 26.2 cm (14 5/16 × 10 5/16 in.)
The J. Paul Getty Museum, Los Angeles, Acquired in honor of Thomas Kren
Ms. 114, fol. 40v (2016.7.40v)



34. Unknown Flemish artist
Decorated Text Page, about 1530
from Book of the Deeds of Jacques de Lalaing
Tempera colors, gold leaf, gold paint, and ink on parchment
Leaf: 36.4 × 26.2 cm (14 5/16 × 10 5/16 in.)
The J. Paul Getty Museum, Los Angeles, Acquired in honor of Thomas Kren
Ms. 114, fol. 41 (2016.7.41)



35. The Master of the Baltimore and Orléans Triptychs
French, active about 1475 - 1500
Nativity and Annunciation to the Shepherds, about 1480-90
Polychrome enamel and gold on copper
Object: H: 20.6 × W: 16 cm (8 1/8 × 6 5/16 in.)
Los Angeles County Museum of Art, William Randolph Hearst Collection
Image: www.lacma.org
L.2017.140



36. Unknown Belgian artist
Armorial Millefleurs Tapestry, about 1530-50
Wool; tapestry weave
Object: H: 170.2 × W: 200.7 × D: 1.9 cm (5 ft. 7 in. × 6 ft. 7 in. × 3/4 in.)
Los Angeles County Museum of Art, Gift of Mr. and Mrs. Arnold Kirkeby
Image: www.lacma.org
L.2017.141



37. Unknown English artist
Man's Gauntlet, about 1625-50
Leather, silk and gold metallic thread, silk satin; looped bullion embroidery
Object: L: 36.2 × W: 19.7 cm (14 1/4 × 7 3/4 in.)
Los Angeles County Museum of Art, Gift of Mrs. Margaret Isabel Fairfax MacKnight
Image: www.lacma.org
L.2017.142.1



38. Unknown English artist
Man's Gauntlet, about 1625-50
Leather, silk and gold metallic thread, silk satin; looped bullion embroidery
Object: L: 36.2 × W: 19.7 cm (14 1/4 × 7 3/4 in.)
Los Angeles County Museum of Art, Gift of Mrs. Margaret Isabel Fairfax MacKnight
Image: www.lacma.org
L.2017.142.2



39. Jost Amman
Swiss, 1539 - 1591
Nobilis Neapolitana, 1577
from *Costume Book of Nuremberg*
Woodcut, ink on paper
Unframed: 30.5 × 20.3 cm (12 × 8 in.)
Los Angeles County Museum of Art, Gift of Mr. and Mrs. Marvin M. Chesebro
Image: www.lacma.org
L.2017.143



40. Unknown French artist
Woman's Purse, about 1595
Silk velvet, metallic-thread embroidery, seed pearls; braided and knotted trim
Object (without tassels and buttons): H: 16.5 × W: 8.6 × D: 9.2 cm (6 1/2 × 3 3/8 × 3 5/8 in.)
Los Angeles County Museum of Art, Purchased with funds provided by Claudia Mirkin
Image: www.lacma.org
L.2017.144