

Blurring the Line: Manuscripts in the Age of Print

August 6 to October 27, 2019

The J. Paul Getty Museum at the Getty Center



1. Unknown

Detached Leaf, about 845

from Fragmentary Leaf from a Bible

Iron gall ink and tempera on parchment

Leaf (cut into 1 cm. (3/8) in. strips): 46 × 31.1 cm (18 1/8 × 12 1/4 in.)

The J. Paul Getty Museum, Los Angeles

Ms. Ludwig I 1, leaf 2v (83.MA.50.2.verso)



2. Circle of Stefan Lochner

German, died 1451

Initial P: Saint Paul, Maccabees II, about 1450

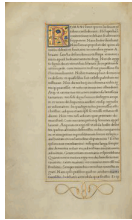
from Bible

Gold leaf, tempera, and black ink on parchment

Leaf: 36.7 × 26 cm (14 7/16 × 10 1/4 in.)

The J. Paul Getty Museum, Los Angeles

Ms. Ludwig I 13, fol. 326 (83.MA.62.326)



3. Unknown

Decorated Initial R, about 1528-30

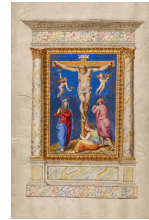
from Getty Epistles

Tempera colors and gold paint on parchment

Leaf: 16.5 × 10.3 cm (Leaf: 6 1/2 × 4 1/16 in.)

The J. Paul Getty Museum, Los Angeles

Ms. Ludwig I 15, fol. 3v (83.MA.64.3v)



4. Fra Vincentius a Fundis

Italian, active about 1560s

Crucifixion, 1567

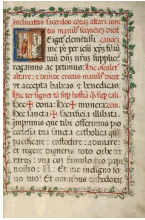
from Missal of Bishop Antonio Scarampi

Tempera colors and gold leaf on parchment

Leaf: 41 × 27 cm (16 1/8 × 10 5/8 in.)

The J. Paul Getty Museum, Los Angeles

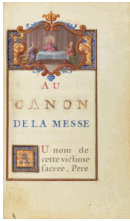
Ms. Ludwig V 7, fol. 11v (83.MG.82.11v)



5. Fra Vincentius a Fundis
 Italian, active about 1560s
Initial T: A Priest Celebrating Mass, 1567
 from Missal of Bishop Antonio Scarampi
 Tempera colors and gold leaf on parchment
 Leaf: 41 × 27 cm (16 1/8 × 10 5/8 in.)
 The J. Paul Getty Museum, Los Angeles
 Ms. Ludwig V 7, fol. 12 (83.MG.82.12)



6. Jean Pierre Rousselet
 French, active about 1677 - 1736
The Raising of the Cross, about 1720-30
 from Prayers to the Mass
 Tempera colors and gold leaf on paper
 Leaf: 11.9 × 7.1 cm (4 11/16 × 2 13/16 in.)
 The J. Paul Getty Museum, Los Angeles
 Ms. Ludwig V 8, fol. 19v (83.MG.83.19v)



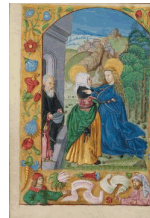
7. Jean Pierre Rousselet
 French, active about 1677 - 1736
Supper at Emmaus, about 1720-30
 from Prayers to the Mass
 Tempera colors and gold leaf on paper
 Leaf: 11.9 × 7.1 cm (4 11/16 × 2 13/16 in.)
 The J. Paul Getty Museum, Los Angeles
 Ms. Ludwig V 8, fol. 20 (83.MG.83.20)



8. Workshop of the Bedford Master
 French, active first half of 15th century
Saint Mark, about 1440 - 1450
 from Book of Hours
 Tempera colors, gold leaf, gold paint, and ink on parchment
 Leaf: 23.5 × 16.4 cm (9 1/4 × 6 7/16 in.)
 The J. Paul Getty Museum, Los Angeles
 Ms. Ludwig IX 6, fol. 208v (83.ML.102.208v)



9. Workshop of the Bedford Master
 French, active first half of 15th century
Saint Luke Painting an Image of the Virgin, about 1440-50
 from Book of Hours
 Tempera colors, gold leaf, gold paint, and ink on parchment
 Leaf: 23.5 × 16.4 cm (9 1/4 × 6 7/16 in.)
 The J. Paul Getty Museum, Los Angeles
 Ms. Ludwig IX 6, fol. 209 (83.ML.102.209)



10. Unknown
The Visitation, early 16th century
 from Book of Hours
 Tempera colors on parchment
 Leaf: 13.5 × 10.5 cm (5 5/16 × 4 1/8 in.)
 The J. Paul Getty Museum, Los Angeles
 Ms. Ludwig IX 16, fol. 165v (83.ML.112.165v)



11. Unknown
Decorated Text Page, early 16th century
 from Book of Hours
 Tempera colors on parchment
 Leaf: 13.5 × 10.5 cm (5 5/16 × 4 1/8 in.)
 The J. Paul Getty Museum, Los Angeles
 Ms. Ludwig IX 16, fol. 166 (83.ML.112.166)



12. Master of James IV of Scotland
 Flemish, before 1465 - about 1541
The Way to Calvary and Saint Veronica with the Sudarium, about 1510-20
 from Spinola Hours
 Tempera colors, gold, and ink on parchment
 Leaf: 23.2 × 16.7 cm (9 1/8 × 6 9/16 in.)
 The J. Paul Getty Museum, Los Angeles
 Ms. Ludwig IX 18, fol. 8v (83.ML.114.8v)



13. Workshop of Master of the First Prayer Book of Maximilian
 Flemish, active about 1475 - 1515
Christ in Majesty, about 1510-20
 from Spinola Hours
 Tempera colors, gold, and ink on parchment
 Leaf: 23.2 × 16.7 cm (9 1/8 × 6 9/16 in.)
 The J. Paul Getty Museum, Los Angeles
 Ms. Ludwig IX 18, fol. 9 (83.ML.114.9)



14. Geoffroy Tory
 about 1480 - about 1533
 Champfleury (*The Art and Science of the Proportion of the Attic or Ancient Roman Letters, According to the Human Body and Face*), 1929
 Bound Volume
 Closed: 27 × 18.8 × 2.5 cm (10 5/8 × 7 3/8 × 1 in.)
 The Getty Research Institute
 84-B7072



15. Hartmann Schedel
 German, 1440 - 1514
 Buch der Chroniken [Nuremberg Chronicle], 1493
 Publication
 Closed: 48.7 × 35.2 × 7.8 cm (19 3/16 × 13 7/8 × 3 1/16 in.)
 The Getty Research Institute
 84-B7073

16. Michael Wolgemut
 German, 1434 - 1519
 Schatzbehälter der wahren Reichtümer des Heils [Treasure Box or Shrine of the True Riches of Salvation and Eternal Blessedness], 1491
 Incunabula
 Closed: 32.8 × 22.5 × 7.5 cm (12 15/16 × 8 7/8 × 2 15/16 in.)
 The Getty Research Institute
 84-B7575



17. Catholic Church
Book of Hours (Use of Troyes), 1507 or later
Bound volume
Closed: 18.5 × 12.5 × 4 cm (7 5/16 × 4 15/16 × 1 9/16 in.)
The Getty Research Institute
85-B13147
18. Jost Amman
Swiss, 1539 - 1591
Book of Trades, 1574
Woodcut
Closed: 16.1 × 10.4 × 1.9 cm (6 5/16 × 4 1/8 × 3/4 in.)
The Getty Research Institute
87-B3006
19. Saint Bridget of Sweden
Sweden, 1303 - 1373
Revelations of Bridget of Sweden, 1500
Woodcut
Closed: 31 × 23 × 5 cm (12 3/16 × 9 1/16 × 1 15/16 in.)
The Getty Research Institute
88-B7212
20. Johann Schonsperger
Virgin and Child, 1495
Woodcut
Closed: 18.6 × 14 × 1.2 cm (7 5/16 × 5 1/2 × 1/2 in.)
The Getty Research Institute
93-B19985
21. Johann Besicken
1469 - 1508
In isto opusculo dicit' quomodo Romulus [&] Remus nati sunt [&] educati... De indulgentijs omnium ecclesiarum [&] reliquijs que Rome existunt. De staionibus in eisde5 per circulum anni [&]c., 1494
Incunabula with woodcuts
Closed: 14 × 9 × 1 cm (5 1/2 × 3 9/16 × 3/8 in.)
The Getty Research Institute
95-B1689
22. Master SW
Arrest of Christ, 16th century
Engraving
Object: 11.1 × 7.3 cm (4 3/8 × 2 7/8 in.)
The Getty Research Institute
2000.PR.16.3



23. Albrecht Dürer
 German, 1471 - 1528
 [Five figure studies (The desperate man)], [ca. 1515]
 Etching
 Sheet: 18.8 × 13.6 cm (7 3/8 × 5 3/8 in.)
 The Getty Research Institute
 2010.PR.92



24. Martin Schongauer
 German, about 1445 - 1491
Christ Carrying the Cross, about 1475 - 1480
 Engraving on paper
 Image: 16.4 × 11.7 cm (6 7/16 × 4 5/8 in.)
 Fine Arts Museums of San Francisco, Bequest of Mrs.
 Edgar Sinton
 L.2018.144

25. Johann Gutenberg
 1394 - 1498
 Johannes Fust
 about 1400 - 1466
Latin Bible Leaf, Maccabees II, about 1454-55
 Printed on paper with movable type
 Page: 39 × 27.8 cm (15 3/8 × 10 15/16 in.)
 Library Special Collections, Charles E. Young Research
 Library, UCLA
 L.2018.145

26. Agostino Giustiniani
 1470 - 1536
 Pietro Paolo Porro
 active about 1514 - 1525
Psalms, 1516
 Printed on paper with movable type
 Page: 32.6 × 23.3 cm (12 13/16 × 9 3/16 in.)
 Library Special Collections, Charles E. Young Research
 Library, UCLA
 L.2018.146



27. Albrecht Dürer
 German, 1471 - 1528
The Sudarium Displayed by Two Angels, 1513
 Engraving on paper
 Unframed: 10.2 × 14.3 cm (4 × 5 5/8 in.)
 Los Angeles County Museum of Art, Los Angeles County
 Fund
 Image: www.lacma.org
 L.2018.147



28. Marcantonio Raimondi
 Italian, about 1480 - about 1534
 After Albrecht Dürer
 German, 1471 - 1528
The Visitation, 1505-15
 Engraving on paper
 Unframed: 30.5 × 21.6 cm (12 × 8 1/2 in.)
 Los Angeles County Museum of Art, Gift of Helen
 Lundeborg Feitelson in memory of Lorser Feitelson
 Image: www.lacma.org
 L.2018.148

