

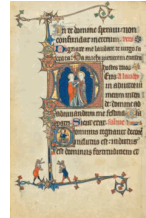
Play and Pastimes in the Middle Ages

May 16 to August 6, 2023

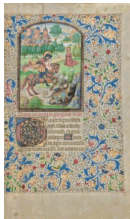
The J. Paul Getty Museum at the Getty Center



1. Unknown French
Initial C: The Massacre of the Innocents, about 1320-25
from Breviary
Tempera colors, gold leaf, and ink on parchment
Leaf (trimmed): 16.7 × 11.1 cm (6 9/16 × 4 3/8 in.)
The J. Paul Getty Museum, Los Angeles
Ms. Ludwig IX 2, fol. 142 (83.ML.98.142)



2. Unknown French
Initial D: The Visitation; Initial D: The Lord Enthroned,
about 1300
from Ruskin Hours
Tempera colors, gold leaf, and ink on parchment
Leaf: 26.4 × 18.3 cm (10 3/8 × 7 3/16 in.)
The J. Paul Getty Museum, Los Angeles
Ms. Ludwig IX 3, fol. 63v (83.ML.99.63v)



3. Willem Vrelant
Flemish, died 1481, active 1454 - 1481
Saint George and the Dragon, early 1460s
from Arenberg Hours
Tempera colors, gold leaf, and ink on parchment
Leaf: 25.6 × 17.3 cm (10 1/16 × 6 13/16 in.)
The J. Paul Getty Museum, Los Angeles
Ms. Ludwig IX 8, fol. 47 (83.ML.104.47)



4. Unknown German
May Calendar Page, early 1500s
from Book of Hours
Tempera colors on parchment
Leaf: 13.5 × 10.5 cm (5 5/16 × 4 1/8 in.)
The J. Paul Getty Museum, Los Angeles
Ms. Ludwig IX 16, fol. 5 (83.ML.112.5)



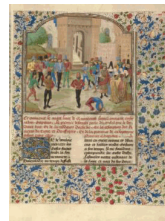
5. Workshop of the Master of James IV of Scotland
Flemish, before 1465 - about 1541
January Calendar Page, about 1510-20
from Spinola Hours
Tempera colors, gold, and ink on parchment
Leaf: 23.2 × 16.7 cm (9 1/8 × 6 9/16 in.)
The J. Paul Getty Museum, Los Angeles
Ms. Ludwig IX 18, fol. 1v (83.ML.114.1v)



6. Workshop of the Master of James IV of Scotland
Flemish, before 1465 - about 1541
February Calendar Page, about 1510-20
from Spinola Hours
Tempera colors, gold, and ink on parchment
Leaf: 23.2 × 16.7 cm (9 1/8 × 6 9/16 in.)
The J. Paul Getty Museum, Los Angeles
Ms. Ludwig IX 18, fol. 2 (83.ML.114.2)



7. Unknown French
The God of Love Leads a Dance, about 1405
from Romance of the Rose
Tempera colors, gold leaf, and ink on parchment bound
between pasteboard covered with dark red morocco
Leaf: 36.7 × 26 cm (14 7/16 × 10 1/4 in.)
The J. Paul Getty Museum, Los Angeles
Ms. Ludwig XV 7, fol. 8 (83.MR.177.8)



8. Master of the Jardin de vertueuse consolation and
assistant
Flemish, active 3rd quarter of 15th century
The Competition in Sittacene, about 1470-75
from Book of the Deeds of Alexander the Great
Tempera colors, gold leaf, gold paint, and ink on
parchment
Leaf: 43.2 × 33 cm (17 × 13 in.)
The J. Paul Getty Museum, Los Angeles
Ms. Ludwig XV 8, fol. 99 (83.MR.178.99)



9. Unknown Italian
Combat with a Lance, about 1410
from The Flower of Battle
Tempera colors, gold leaf, silver leaf, and ink
on parchment
Leaf: 27.9 × 20.6 cm (11 × 8 1/8 in.)
The J. Paul Getty Museum, Los Angeles
Ms. Ludwig XV 13, fol. 39v (83.MR.183.39v)



10. Unknown Italian
Combat with a Lance, about 1410
from The Flower of Battle
Tempera colors, gold leaf, silver leaf, and ink
on parchment
Leaf: 27.9 × 20.6 cm (11 × 8 1/8 in.)
The J. Paul Getty Museum, Los Angeles
Ms. Ludwig XV 13, fol. 40 (83.MR.183.40)



11. Unknown German
A Tournament Contest, about 1560-70
from Tournament Book
Tempera colors and gold and silver paint on paper bound between original pasteboard covered with original brown calf
Leaf: 43 × 28.9 cm (16 15/16 × 11 3/8 in.)
The J. Paul Getty Museum, Los Angeles
Ms. Ludwig XV 14, fol. 35v (83.MR.184.35v)



12. Unknown German
A Tournament Contest, about 1560-70
from Tournament Book
Tempera colors and gold and silver paint on paper bound between original pasteboard covered with original brown calf
Leaf: 43 × 28.9 cm (16 15/16 × 11 3/8 in.)
The J. Paul Getty Museum, Los Angeles
Ms. Ludwig XV 14, fol. 36 (83.MR.184.36)



13. Unknown French
Chess Problems, late 1300s
from Book of Chess Problems
Tempera colors and gold leaf on parchment
Leaf: 24.8 × 16.8 cm (9 3/4 × 6 5/8 in.)
The J. Paul Getty Museum, Los Angeles
Ms. Ludwig XV 15, fol. 96v (83.MR.185.96v)



14. Unknown French
Chess Problems, late 1300s
from Book of Chess Problems
Tempera colors and gold leaf on parchment
Leaf: 24.8 × 16.8 cm (9 3/4 × 6 5/8 in.)
The J. Paul Getty Museum, Los Angeles
Ms. Ludwig XV 15, fol. 97 (83.MR.185.97)



15. Unknown Flemish
April Calendar Page, mid-1200s
from Psalter
Tempera colors, gold leaf, and ink on parchment
Leaf: 23.5 × 16.5 cm (9 1/4 × 6 1/2 in.)
The J. Paul Getty Museum, Los Angeles
Ms. 14, fol. 4v (85.MK.239.4v)



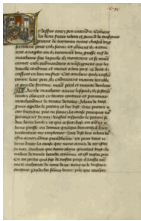
16. Unknown Flemish
May Calendar Page, mid-1200s
from Psalter
Tempera colors, gold leaf, and ink on parchment
Leaf: 23.5 × 16.5 cm (9 1/4 × 6 1/2 in.)
The J. Paul Getty Museum, Los Angeles
Ms. 14, fol. 5 (85.MK.239.5)



17. Unknown French
A Hunter and Dogs Pursuing a Stag, about 1430-40
from Book of the Hunt
Tempera colors, gold paint, silver paint, and gold leaf on parchment
Leaf: 26.4 × 18.4 cm (10 3/8 × 7 1/4 in.)
The J. Paul Getty Museum, Los Angeles
Ms. 27, fol. 71v (87.MR.34.71v)



18. Unknown French
Young Men and Women Outdoors, about 1460-70
from Letter to Johann von Eich
Tempera colors, gold leaf, gold paint, and ink on parchment
Leaf: 17.6 × 11.4 cm (6 15/16 × 4 1/2 in.)
The J. Paul Getty Museum, Los Angeles
Ms. 68, fol. 8 (2001.45.8)



19. Lieven van Lathem
Flemish, about 1430 - 1493
Initial C: Gillion's Sons Kneeling before the King of Cyprus, 1464
from Romance of Gillion de Trazegnies
Tempera colors, gold, and ink on parchment
Leaf: 37 × 25.5 cm (14 9/16 × 10 1/16 in.)
The J. Paul Getty Museum, Los Angeles
Ms. 111, fol. 105 (2013.46.105)



20. Master of the Getty Lalaing
Flemish, active about 1530
Jacques de Lalaing Arriving at a Joust, about 1530
from Book of the Deeds of Jacques de Lalaing
Tempera colors, gold leaf, gold paint, and ink on parchment
Leaf: 36.4 × 26.2 cm (14 5/16 × 10 5/16 in.)
The J. Paul Getty Museum, Los Angeles, Acquired in honor of Thomas Kren
Ms. 114, fol. 40v (2016.7.40v)