

Mesopotamia: Civilization Begins

April 21 to August 16, 2021

The J. Paul Getty Museum at the Getty Villa



1. *Land Grant Stele ("Caillou Michaux")*
Post-Kassite, 1100 - 1083 B.C.
Serpentine
Object: H: 40 × W: 22 × D: 14 cm (15 3/4 × 8 11/16 × 5 1/2 in.), 31.7518 kg (15 3/4 × 8 11/16 × 5 1/2 in., 70 lb.)
Bibliothèque nationale de France
Image © BnF
VEX.2020.1.1



2. *Wall Panel with a Striding Lion*
Neo-Babylonian, 605 - 562 B.C.
Glazed brick
Object: H: 99.7 × W: 230.5 × D: 12.1 cm, 303.91 kg (39 1/4 × 90 3/4 × 4 3/4 in., 670 lb.)
The Metropolitan Museum of Art, Fletcher Fund, 1931 (31.13.1)
Image: www.metmuseum.org
VEX.2020.1.2



3. *Statue of Prince Gudea*
Neo-Sumerian, about 2120 B.C.
Diorite
Object: H: 44 × W: 21.5 × D: 29.5 cm (17 5/16 × 8 7/16 × 11 5/8 in.)
The Metropolitan Museum of Art, Harris Brisbane Dick Fund, 1959 (59.2)
Image: www.metmuseum.org
VEX.2020.1.3



4. *Head of a Man, Possibly a Ruler*
2300 - 2000 B.C.
Bronze
Object: H: 34.3 × W: 20 × D: 20 cm (13 1/2 × 7 7/8 × 7 7/8 in.)
The Metropolitan Museum of Art, Rogers Fund, 1947 (47.100.80)
Image: www.metmuseum.org
VEX.2020.1.4



5. *Relief with King Ashurbanipal*
Neo-Assyrian, 668 - 627 B.C.
Gypsum
Object: H: 25.5 × W: 23 × D: 2 cm (10 1/16 × 9 1/16 × 13/16 in.)
Musée Auguste Grasset - VARZY (F)
Image © Varzy, musée Auguste-Grasset
VEX.2020.1.5



6. *Statuette of Two Deities Holding a Vase with Flowing Water*
Isin-Larsa / Old Babylonian, 2000 - 1600 B.C.
Peridotite
Object: H: 22.4 × W: 19.1 × D: 11 cm (8 13/16 × 7 1/2 × 4 5/16 in.)
Musée du Louvre, Département des Antiquités orientales
Image © RMN-Grand Palais / Art Resource, NY. Photo: Mathieu Rabeau
VEX.2020.1.6



7. *Box Lid with Intertwined Snakes*
Neo-Sumerian, 2150 - 2000 B.C.
Steatite
Object: H: 11.3 × W: 7.4 × D: 1.3 cm (4 7/16 × 2 15/16 × 1/2 in.)
Musée du Louvre, Département des Antiquités orientales
Image © RMN-Grand Palais / Art Resource, NY. Photo: Franck Raux
VEX.2020.1.7



8. *Vessel Fragment with Cows in a Barn*
Late Uruk, 3400 - 3100 B.C.
Limestone
Object: H: 15 × W: 24.5 × D: 1.3 cm (5 7/8 × 9 5/8 × 1/2 in.)
Musée du Louvre, Département des Antiquités orientales
Image © RMN-Grand Palais / Art Resource, NY. Photo: Franck Raux
VEX.2020.1.8



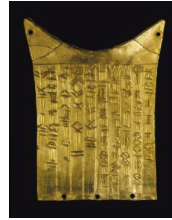
9. *Stele Fragment with the God Marduk*
Middle Babylonian, 1186 - 1172 B.C.
Limestone
Object: H: 48 × W: 42.5 × D: 47 cm (18 7/8 × 16 3/4 × 18 1/2 in.), 239.9528 kg (18 7/8 × 16 3/4 × 18 1/2 in., 529 lb.)
Musée du Louvre, Département des Antiquités orientales
Image © Musée du Louvre, dist. RMN Grand Palais / Philippe Fuzeau / Art Resource, NY
VEX.2020.1.9



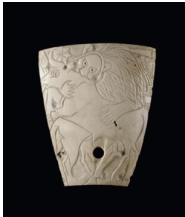
10. *Box with Snakes*
Neo-Sumerian, 2150 - 2000 B.C.
Terracotta
Object: H: 8 × W: 17 × D: 4.4 cm (3 1/8 × 6 11/16 × 1 3/4 in.)
Musée du Louvre, Département des Antiquités orientales
Image © RMN-Grand Palais / Art Resource, NY. Photo: Mathieu Rabeau
VEX.2020.1.11



11. *Stele Fragment with Prince Gudea Bearing a Statuette of a Deity Planting a Peg*
 Neo-Sumerian, about 2120 B.C.
 Limestone
 Object: H: 19.1 × W: 19.1 × D: 3.8 cm (7 1/2 × 7 1/2 × 1 1/2 in.)
 Musée du Louvre, Département des Antiquités orientales
 Image © RMN-Grand Palais / Art Resource, NY. Photo: Mathieu Rabeau
 VEX.2020.1.12



12. *Votive Plaque in the Form of a Beard*
 Early Dynastic, 2600 - 2340 B.C.
 Gold
 Object: H: 8.5 × W: 6.7 × D: 2 cm (3 3/8 × 2 5/8 × 13/16 in.)
 Musée du Louvre, Département des Antiquités orientales
 Image © Musée du Louvre, dist. RMN-Grand Palais / Christian Larrieu / Art Resource, NY
 VEX.2020.1.13



13. *Plaque with a Lion Attacking a Bull*
 Early Dynastic, about 2500 B.C.
 Shell
 Object: H: 7 × W: 5 × D: 0.6 cm (2 3/4 × 1 15/16 × 1/4 in.)
 Musée du Louvre, Département des Antiquités orientales
 Image © RMN-Grand Palais / Art Resource, NY. Photo: Franck Raux
 VEX.2020.1.14



14. *Tablet with Enki and Ninmah: The Creation of Humankind*
 Isin-Larsa / Old Babylonian, 2000 - 1600 B.C.
 Terracotta
 Object: H: 14.3 × W: 10.8 × D: 3.7 cm (5 5/8 × 4 1/4 × 1 7/16 in.)
 Musée du Louvre, Département des Antiquités orientales
 Image © RMN-Grand Palais / Art Resource, NY. Photo: Franck Raux
 VEX.2020.1.15



15. *Stele of King Melishipak II*
 Middle Babylonian, 1186 - 1172 B.C.
 Black limestone
 Object: H: 65 × W: 30 × D: 19 cm (25 9/16 × 11 13/16 × 7 1/2 in.), 100.2449 kg (25 9/16 × 11 13/16 × 7 1/2 in., 221 lb.)
 Musée du Louvre, Département des Antiquités orientales
 Image © RMN-Grand Palais / Art Resource, NY. Photo: René-Gabriel Ojéda
 VEX.2020.1.16



16. *Cylinder Seal Fragment with a Worshipper before a Cult Statue*
 Neo-Babylonian, 500s B.C.
 Jasper
 Object: H: 8.9 × W: 3.8 × D: 3.4 cm (3 1/2 × 1 1/2 × 1 5/16 in.)
 Musée du Louvre, Département des Antiquités orientales
 Image © Musée du Louvre, dist. RMN-Grand Palais / Thierry Ollivier / Art Resource, NY
 VEX.2020.1.17



17. *Cult Vessel ("The Vase of Enmetena")*
 Early Dynastic, about 2420 B.C.
 Silver (vase) and bronze (base)
 Object: H: 35 × W: 17.9 × D: 18 cm (13 3/4 × 7 1/16 × 7 1/16 in.)
 Musée du Louvre, Département des Antiquités orientales
Image © RMN-Grand Palais / Art Resource, NY. *Photo:*
 Hervé Lewandowski
 VEX.2020.1.18



18. *Head of a God*
 Neo-Sumerian, 2150 - 2000 B.C.
 Terracotta
 Object: H: 10.8 × W: 6.4 × D: 5.7 cm (4 1/4 × 2 1/2 × 2 1/4 in.)
 Musée du Louvre, Département des Antiquités orientales
Image © RMN-Grand Palais / Art Resource, NY. *Photo:*
 Franck Raux
 VEX.2020.1.19



19. *Statuette of a Bull*
 Late Uruk, about 3000 B.C.
 Black limestone
 Object: H: 12.7 × W: 22.2 × D: 8.6 cm (5 × 8 3/4 × 3 3/8 in.)
 Musée du Louvre, Département des Antiquités orientales
Image © RMN-Grand Palais / Art Resource, NY. *Photo:*
 Christian Larrieu
 VEX.2020.1.20



20. *Cones from Wall Mosaics*
 Late Uruk, 3400 - 3100 B.C.
 Terracotta
 Dimensions variable
 Musée du Louvre, Département des Antiquités orientales
Image © Musée du Louvre, dist. RMN-Grand Palais /
 Raphaël Chipault / Art Resource, NY
 VEX.2020.1.24-.25, .211-.224



21. *Statuette of a Woman Holding a Branch*
 Early Dynastic, about 2450 B.C.
 Alabaster
 Musée du Louvre, Département des Antiquités orientales
Image © Musée du Louvre, dist. RMN-Grand Palais /
 Raphaël Chipault
 VEX.2020.1.26



22. *Relief of a Goddess*
 Isin-Larsa / Old Babylonian, 2000 - 1760 B.C.
 Alabaster with traces of silver plating
 Object (with mount): H: 13.3 × W: 4.4 × D: 1.3 cm (5 1/4 × 1 3/4 × 1/2 in.)
 Musée du Louvre, Département des Antiquités orientales
Image © RMN-Grand Palais / Art Resource, NY. *Photo:*
 Mathieu Rabeau
 VEX.2020.1.27



23. *Plaque with a Cult Statue in a Sanctuary*
 Isin-Larsa / Old Babylonian, 2000 - 1600 B.C.
 Terracotta
 Object: H: 9.5 × W: 6.7 × D: 7.6 cm (3 3/4 × 2 5/8 × 3 in.)
 Musée du Louvre, Département des Antiquités orientales
Image © Musée du Louvre, dist. RMN-Grand Palais / Raphaël Chipault / Benjamin Soligny / Art Resource, NY
 VEX.2020.1.28



24. *Inscribed Pivot Stone and Door Hinge*
 Neo-Sumerian, 2150 - 2000 B.C.
 Limestone; bronze
 Dimensions variable
 Musée du Louvre, Département des Antiquités orientales
Image © RMN-Grand Palais / Art Resource, NY. *Photo:*
 Mathieu Rabeau
 VEX.2020.1.29-30



25. *Door Decorations*
 Neo-Assyrian, 858 - 824 B.C.
 Bronze
 Dimensions variable
 Musée du Louvre, Département des Antiquités orientales
Images © RMN-Grand Palais / Art Resource, NY. *Photo:*
 Franck Raux; © Musée du Louvre, dist. RMN-GP /
 Philippe Fuzeau / Art Resource, NY
 VEX.2020.1.33, .36, .159-.165



26. *Furniture Appliqué with a Winged Protective Demon Carrying an Ibex*
 Neo-Assyrian, 934 - 610 B.C.
 Gold
 Object: H: 9.1 × W: 7.5 × D: 0.3 cm (3 9/16 × 2 15/16 × 1/8 in.)
 Musée du Louvre, Département des Antiquités orientales
Image © Musée du Louvre, dist. RMN-Grand Palais /
 Thierry Ollivier / Art Resource, NY
 VEX.2020.1.37



27. *Statuette of a Human-Headed Bull*
 Neo-Sumerian, 2150 - 2000 B.C.
 Chlorite
 Object: H: 12.1 × W: 14.9 × D: 8 cm (4 3/4 × 5 7/8 × 3 1/8 in.)
 Musée du Louvre, Département des Antiquités orientales
Image © RMN-Grand Palais / Art Resource, NY. *Photo:*
 Hervé Lewandowski
 VEX.2020.1.38



28. *Foundation Tablet*
 Neo-Assyrian, 721 - 705 B.C.
 Bronze
 Object: H: 19 × W: 12.7 × D: 0.5 cm (7 1/2 × 5 × 3/16 in.)
 Musée du Louvre, Département des Antiquités orientales
Image © RMN-Grand Palais / Art Resource, NY. *Photo:*
 Franck Raux
 VEX.2020.1.39



29. *Offering Stand with a Worshipper and Palm Tree*
Early Dynastic or Akkadian, 2600 - 2150 B.C.
Terracotta
Object: H: 32.1 × W: 16.6 × D: 16.7 cm (12 5/8 × 6 9/16 × 6 9/16 in.)
Musée du Louvre, Département des Antiquités orientales
Image © Musée du Louvre, dist. RMN-GP / Raphaël Chipault / Art Resource, NY
VEX.2020.1.40



30. *Stele with a Libation before an Enthroned God*
Neo-Sumerian or Isin-Larsa / Old Babylonian, 2150 - 1600 B.C.
Limestone with traces of pigment
Object: H: 84.3 × W: 61.5 × D: 13.5 cm (33 3/16 × 24 3/16 × 5 5/16 in.)
Musée du Louvre, Département des Antiquités orientales
Image © RMN-Grand Palais / Art Resource, NY
VEX.2020.1.41



31. *Stele Fragment with a Fortress*
Neo-Assyrian, 850 - 650 B.C.
Gypsum with traces of pigment
Object: H: 30.5 × W: 39 × D: 7 cm (12 × 15 3/8 × 2 3/4 in.)
Musée du Louvre, Département des Antiquités orientales
Image © Musée du Louvre, dist. RMN Grand Palais / Philippe Fuzeau / Art Resource, NY
VEX.2020.1.42



32. *Foundation Deposit of Prince Ur-Bau: Jar with a Tablet and Statuette of a Deity Planting a Peg*
Neo-Sumerian, about 2150 B.C.
Terracotta; limestone; bronze
Dimensions variable
Musée du Louvre, Département des Antiquités orientales
Image © Musée du Louvre, dist. RMN-Grand Palais / Raphaël Chipault / Benjamin Soligny / Art Resource, NY
VEX.2020.1.43-45



33. *Statuette of Prince Satam Praying*
Early Dynastic, about 2400 B.C.
Limestone
Object: H: 27 × W: 15 × D: 8.7 cm (10 5/8 × 5 7/8 × 3 7/16 in.)
Musée du Louvre, Département des Antiquités orientales
Image © Musée du Louvre, dist. RMN-Grand Palais / Raphaël Chipault / Art Resource, NY
VEX.2020.1.46



34. *Plaque with a Nude Winged Goddess, Probably Ishtar*
Isin-Larsa, 2000 - 1800 B.C.
Terracotta
Object: H: 20.5 × W: 11.5 × D: 3.1 cm (8 1/16 × 4 1/2 × 1 1/4 in.)
Musée du Louvre, Département des Antiquités orientales
Image © RMN-Grand Palais / Art Resource, NY. Photo: Franck Raux
VEX.2020.1.47



35. *Vessel*
Late Uruk, 3400 - 3100 B.C.
Black marble
Object: H: 16 × W: 21.5 × D: 21.4 cm (6 5/16 × 8 7/16 × 8 7/16 in.)
Musée du Louvre, Département des Antiquités orientales
Image © RMN-Grand Palais / Art Resource, NY. Photo: Mathieu Rabeau
VEX.2020.1.48



36. *Statuette of a Dog, Dedicated to the Goddess Ninisina*
Isin-Larsa, 1894 - 1866 B.C.
Steatite
Object: H: 7 × W: 11.5 × D: 3.8 cm (2 3/4 × 4 1/2 × 1 1/2 in.)
Musée du Louvre, Département des Antiquités orientales
Image © Musée du Louvre, dist. RMN-Grand Palais / Thierry Ollivier / Art Resource, NY
VEX.2020.1.49



37. *Tablet with Proto-cuneiform Inscription*
Late Uruk, 3400 - 3100 B.C.
Unfired clay
Object: H: 4.5 × W: 7.2 × D: 1.5 cm (1 3/4 × 2 13/16 × 9/16 in.)
Musée du Louvre, Département des Antiquités orientales
Image © RMN-Grand Palais / Art Resource, NY. Photo: Franck Raux
VEX.2020.1.50



38. *Necklaces*
Proto-Urban / Uruk to Neo-Assyrian, 4000 - 610 B.C.
Gold, lapis lazuli, carnelian, rock crystal, chalcedony, onyx, sardonyx, jasper, malachite, amazonite, hematite, gabbro, steatite, metabasite, alabaster, calcite, limestone, bitumen, ivory, bone, glass, and white alkali
Dimensions variable
Musée du Louvre, Département des Antiquités orientales
Image © Musée du Louvre, dist. RMN Grand Palais / Raphaël Chipault / Benjamin Soligny / Art Resource, NY
VEX.2020.1.51-.52, .69-.73, .84, .96, .155-.158



39. *Model of a Liver for Divination*
Isin-Larsa / Old Babylonian, 2000 - 1760 B.C.
Unfired clay
Object: H: 7 × W: 6.7 × D: 3.5 cm (2 3/4 × 2 5/8 × 1 3/8 in.)
Musée du Louvre, Département des Antiquités orientales
Image © RMN-Grand Palais (Musée du Louvre) / Art Resource, NY. Photo: Franck Raux
VEX.2020.1.53



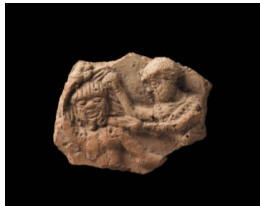
40. *Cylinder Seal with an Offering to a Deity*
Neo-Babylonian, 626 - 539 B.C.
Carnelian and gold
Object: H: 5.4 × W: 1.3 × D: 1.6 cm (2 1/8 × 1/2 × 5/8 in.)
Musée du Louvre, Département des Antiquités orientales
Image © Musée du Louvre, dist. RMN-Grand Palais / Raphaël Chipault / Art Resource, NY
VEX.2020.1.54



41. *Tablet with a Bilingual Dictionary from King Ashurbanipal's Library*
Neo-Assyrian, 668 - 627 B.C.
Terracotta
Object: H: 18 × W: 10 × D: 3.2 cm (7 1/16 × 3 15/16 × 1 1/4 in.)
Musée du Louvre, Département des Antiquités orientales
Image © Musée du Louvre, dist. RMN-Grand Palais / Thierry Ollivier / Art Resource, NY
VEX.2020.1.55



42. *Cylinder Seal with King Etana Ascending to Heaven on an Eagle*
Akkadian, 2340 - 2150 B.C.
Shell
Object: W: 2.5 × D: 2.5 × L: 3.8 cm (1 × 1 × 1 1/2 in.)
Musée du Louvre, Département des Antiquités orientales
Image © Musée du Louvre, dist. RMN-Grand Palais / Philippe Fuzeau / Art Resource, NY
VEX.2020.1.56



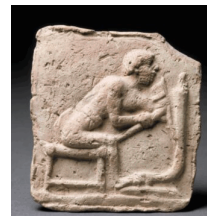
43. *Plaque with King Gilgamesh Killing the Monster Humbaba*
Isin-Larsa / Old Babylonian, 2000 - 1600 B.C.
Terracotta
Object: H: 4.7 × W: 6.5 × D: 1.5 cm (1 7/8 × 2 9/16 × 9/16 in.)
Musée du Louvre, Département des Antiquités orientales
Image © Musée du Louvre, dist. RMN-Grand Palais / Franck Raux / Art Resource, NY
VEX.2020.1.57



44. *Tablet with an Essay on the Education of a Young Scribe*
Old Babylonian, 1749 B.C.
Unfired clay
Object: H: 9.9 × W: 6.3 × D: 3 cm (3 7/8 × 2 1/2 × 1 3/16 in.)
Musée du Louvre, Département des Antiquités orientales
Image © Musée du Louvre, dist. RMN Grand Palais / Raphaël Chipault / Benjamin Soligny / Art Resource, NY
VEX.2020.1.58



45. *Model of a Chariot*
Early Dynastic, 2900 - 2340 B.C.
Bronze
Object: H: 6.4 × W: 21.8 × D: 5.1 cm (2 1/2 × 8 9/16 × 2 in.)
Musée du Louvre, Département des Antiquités orientales
Image © RMN-Grand Palais / Art Resource, NY. Photo: Franck Raux
VEX.2020.1.59



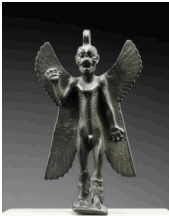
46. *Plaque with a Carpenter Making Part of a Chariot or Plow*
Isin-Larsa / Old Babylonian, 2000 - 1600 B.C.
Terracotta
Object: H: 8.3 × W: 7.9 × D: 1.3 cm (3 1/4 × 3 1/8 × 1/2 in.)
Musée du Louvre, Département des Antiquités orientales
Image © RMN-Grand Palais / Art Resource, NY
VEX.2020.1.60



47. *Tablet with Enki and the World Order*
 Isin-Larsa, 2000 - 1794 B.C.
 Terracotta
 Object: H: 12.1 × W: 6.4 × D: 3.2 cm (4 3/4 × 2 1/2 × 1 1/4 in.)
 Musée du Louvre, Département des Antiquités orientales
 Image © RMN-Grand Palais / Art Resource, NY. Photo: Franck Raux
 VEX.2020.1.61



48. *Cylinder Seal with Gilgamesh Killing the Bull of Heaven*
 Neo-Babylonian, 626 - 539 B.C.
 Carnelian
 Object: W: 1.3 × D: 1.1 × L: 2.4 cm (1/2 × 7/16 × 15/16 in.)
 Musée du Louvre, Département des Antiquités orientales
 Image © Musée du Louvre, dist. RMN-Grand Palais / Raphaël Chipault / Benjamin Soligny / Art Resource, NY
 VEX.2020.1.62



49. *Statuette of the Demon Pazuzu*
 Neo-Assyrian, 934 - 610 B.C.
 Bronze
 Object: H: 14.6 × W: 8.9 × D: 5.6 cm (5 3/4 × 3 1/2 × 2 3/16 in.)
 Musée du Louvre, Département des Antiquités orientales
 Image © Musée du Louvre, dist. RMN-Grand Palais / Thierry Ollivier / Art Resource, NY
 VEX.2020.1.63



50. *Cylinder Seal with a Banquet and Animal Combat*
 Early Dynastic, about 2600 B.C.
 Shell
 Object: W: 1.7 × D: 1.7 × L: 4.1 cm (11/16 × 11/16 × 1 5/8 in.)
 Musée du Louvre, Département des Antiquités orientales
 Image © RMN-Grand Palais / Art Resource, NY. Photo: Daniel Lébée
 VEX.2020.1.64



51. *Cylinder Seal with a Palm Tree and Animal Combat*
 Middle Assyrian, 1400 - 934 B.C.
 Red and black jasper
 Object: W: 1.3 × D: 1.2 × L: 4.9 cm (1/2 × 1/2 × 1 15/16 in.)
 Musée du Louvre, Département des Antiquités orientales
 Image © Musée du Louvre, dist. RMN-Grand Palais / Raphaël Chipault / Benjamin Soligny / Art Resource, NY
 VEX.2020.1.65



52. *Tablet in Envelope with a Marriage Contract*
 Old Babylonian, 1830 - 1813 B.C.
 Unfired clay
 Object (overall): H: 12.7 × W: 6.7 × D: 4.4 cm (5 × 2 5/8 × 1 3/4 in.)
 Musée du Louvre, Département des Antiquités orientales
 Image © RMN-Grand Palais / Art Resource, NY. Photo: Mathieu Rabeau
 VEX.2020.1.66



53. *Tablet with a Map of a Mountainous Region*
Neo-Babylonian, 626 - 539 B.C.
Unfired clay
Object: H: 12 × W: 7.5 × D: 2.9 cm (4 3/4 × 2 15/16 × 1 1/8 in.)
Musée du Louvre, Département des Antiquités orientales
Image © RMN-Grand Palais / Art Resource, NY. Photo: Franck Raux
VEX.2020.1.67



54. *Tablet with Astronomical and Astrological Text*
Neo-Babylonian, 626 - 539 B.C.
Terracotta
Object: H: 11.9 × W: 5.6 × D: 3 cm (4 11/16 × 2 3/16 × 1 3/16 in.)
Musée du Louvre, Département des Antiquités orientales
Image © Musée du Louvre, dist. RMN Grand Palais / Raphaël Chipault / Benjamin Soligny / Art Resource, NY
VEX.2020.1.68



55. *Plaque with a Couple Embracing*
Isin-Larsa / Old Babylonian, 2000 - 1600 B.C.
Terracotta
Object: H: 11.1 × W: 6.4 × D: 12.7 cm (4 3/8 × 2 1/2 × 5 in.)
Musée du Louvre, Département des Antiquités orientales
Image © RMN-Grand Palais / Art Resource, NY. Photo: Franck Raux
VEX.2020.1.74



56. *Cylinder Seal of Prince Ishma-ilum*
Early Dynastic, about 2450 B.C.
Lapis lazuli
Object: H: 3.7 × W: 2.2 × D: 2.2 cm (1 7/16 × 7/8 × 7/8 in.)
Musée du Louvre, Département des Antiquités orientales
Image © RMN-Grand Palais / Art Resource, NY. Photo: Christian Larrieu
VEX.2020.1.75



57. *Weights*
3000 - 1000 B.C.
Limestone, alabaster, hematite, and other stones
Dimensions variable
Musée du Louvre, Département des Antiquités orientales
Image © Musée du Louvre, dist. RMN Grand Palais / Raphaël Chipault / Benjamin Soligny / Art Resource, NY
VEX.2020.1.77, .167-.210, .226



58. *Fragment of a Dish with a Lion*
Neo-Sumerian, 2150 - 2000 B.C.
Coral limestone
Object: H: 6 × W: 17.8 × D: 13.5 cm (2 3/8 × 7 × 5 5/16 in.)
Musée du Louvre, Département des Antiquités orientales
Image © RMN-Grand Palais / Art Resource, NY. *Photo:* Mathieu Rabeau
VEX.2020.1.79



59. *Tablet and Envelope with a Land Acquisition Contract*
Old Babylonian, 1812 - 1793 B.C.
Unfired clay
Object: H: 9.5 × W: 6.3 × D: 4.4 cm (3 3/4 × 2 1/2 × 1 3/4 in.)
Musée du Louvre, Département des Antiquités orientales
Image © Musée du Louvre, dist. RMN-Grand Palais / Raphaël Chipault / Benjamin Soligny / Art Resource, NY
VEX.2020.1.80



60. *Tablet with Text on Distribution of Clothing*
Old Babylonian, 1749 - 1712 B.C.
Unfired clay
Object: H: 4.3 × W: 3.7 × D: 1.6 cm (1 11/16 × 1 7/16 × 5/8 in.)
Musée du Louvre, Département des Antiquités orientales
Image © Musée du Louvre, dist. RMN-Grand Palais / Raphaël Chipault / Benjamin Soligny / Art Resource, NY
VEX.2020.1.81



61. *Cylinder Seal with a Plowing Scene*
Akkadian, 2340 - 2150 B.C.
Chlorite
Object: H: 3.3 × W: 2.1 × D: 2 cm (1 5/16 × 13/16 × 13/16 in.)
Musée du Louvre, Département des Antiquités orientales
Image © Musée du Louvre, dist. RMN-Grand Palais / Benjamin Soligny / Raphaël Chipault / Art Resource, NY
VEX.2020.1.82



62. *Plaque with an Incantation against the Demon Lamashtu*
Neo-Assyrian, 934 - 610 B.C.
Stone
Object: H: 5.7 × W: 8.3 × D: 1.2 cm (2 1/4 × 3 1/4 × 1/2 in.)
Musée du Louvre, Département des Antiquités orientales
Image © Musée du Louvre, dist. RMN-Grand Palais / Thierry Ollivier / Art Resource, NY
VEX.2020.1.83



63. *Wall-Painting Fragment with a Man's Head*
Neo-Assyrian, 850 - 650 B.C.
Painted clay
Object: H: 30.7 × W: 31.1 × D: 9 cm (12 1/16 × 12 1/4 × 3 9/16 in.)
Musée du Louvre, Département des Antiquités orientales
Image © RMN-Grand Palais / Art Resource, NY. Photo: Mathieu Rabeau
VEX.2020.1.85



64. *Tablet with a Zodiac Calendar*
Seleucid, 305 - 141 B.C.
Unfired clay
Object: H: 12 × W: 18 × D: 1.9 cm (4 3/4 × 7 1/16 × 3/4 in.)
Musée du Louvre, Département des Antiquités orientales
Image © Musée du Louvre, dist. RMN-Grand Palais / Raphaël Chipault / Art Resource, NY
VEX.2020.1.86



65. *Plaque with a Sex Scene*
Isin-Larsa / Old Babylonian, 2000 - 1600 B.C.
Terracotta
Object: H: 11.1 × W: 8.3 × D: 1.9 cm (4 3/8 × 3 1/4 × 3/4 in.)
Musée du Louvre, Département des Antiquités orientales
Image © RMN-Grand Palais / Art Resource, NY. Photo: Mathieu Rabeau
VEX.2020.1.87



66. *Cylinder Seal of a Royal Baker*
Neo-Sumerian, 2150 - 2000 B.C.
Chlorite
Object: H: 3.5 × W: 1.6 × D: 1.6 cm (1 3/8 × 5/8 × 5/8 in.)
Musée du Louvre, Département des Antiquités orientales
Image © Musée du Louvre, dist. RMN-Grand Palais / Raphaël Chipault / Benjamin Soligny / Art Resource, NY
VEX.2020.1.88



67. *Tablet with the Myth of King Etana*
Isin-Larsa / Old Babylonian, 2000 - 1600 B.C.
Unfired clay
Object: H: 11.7 × W: 7.3 × D: 3.4 cm (4 5/8 × 2 7/8 × 1 5/16 in.)
Musée du Louvre, Département des Antiquités orientales
Image © RMN-Grand Palais / Art Resource, NY. Photo: Franck Raux
VEX.2020.1.89



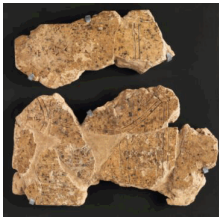
68. *Cylinder Seal of a Prince of Nippur*
Neo-Sumerian, 2094 - 2047 B.C.
Agate
Object: H: 3.4 × W: 2.2 × D: 2.2 cm (1 5/16 × 7/8 × 7/8 in.)
Musée du Louvre, Département des Antiquités orientales
Image © Musée du Louvre, dist. RMN-Grand Palais / Raphaël Chipault / Benjamin Soligny / Art Resource, NY
VEX.2020.1.90



69. *Cylinder Seal with the Gods Nergal and Dumuzi*
 Akkadian, 2340 - 2150 B.C.
 Chlorite
 Object: H: 3.5 × W: 2.2 × D: 2.2 cm (1 3/8 × 7/8 × 7/8 in.)
 Musée du Louvre, Département des Antiquités orientales
 Image © Musée du Louvre, dist. RMN-Grand Palais / Philippe Fuzeau / Art Resource, NY
 VEX.2020.1.91



70. *Cylinder Seal with a King Offering a Goat to a God*
 Isin-Larsa / Old Babylonian, 2000 - 1600 B.C.
 Hematite
 Object: W: 1.3 × D: 1.3 × L: 2.2 cm (1/2 × 1/2 × 7/8 in.)
 Musée du Louvre, Département des Antiquités orientales
 Image © Musée du Louvre, dist. RMN-Grand Palais / Raphaël Chipault / Benjamin Soligny / Art Resource, NY
 VEX.2020.1.92



71. *Fragmentary Map of the Environs of Girsu*
 Akkadian, 2340 - 2000 B.C.
 Unfired clay
 Object: H: 11.1 × W: 20 × D: 1.9 cm (4 3/8 × 7 7/8 × 3/4 in.)
 Musée du Louvre, Département des Antiquités orientales
 Image © RMN-Grand Palais / Art Resource, NY. Photo: Philippe Fuzeau
 VEX.2020.1.93



72. *Tablet with a Hymn to King Shulgi*
 Neo-Sumerian, 2094 - 2047 B.C.
 Unfired clay
 Object: H: 14 × W: 9.8 × D: 3 cm (5 1/2 × 3 7/8 × 1 3/16 in.)
 Musée du Louvre, Département des Antiquités orientales
 Image © Musée du Louvre, dist. RMN-Grand Palais / Raphaël Chipault / Benjamin Soligny / Art Resource, NY
 VEX.2020.1.97



73. *Plaque with a Man Carrying a Fishing Net*
 Early Dynastic, about 2500 B.C.
 Shell
 Object: H: 4.6 × W: 3 × D: 0.6 cm (1 13/16 × 1 3/16 × 1/4 in.)
 Musée du Louvre, Département des Antiquités orientales
 Image © RMN-Grand Palais / Art Resource, NY. Photo: Franck Raux
 VEX.2020.1.98



74. *Model of a Boat*
 Neo-Sumerian, 2150 - 2000 B.C.
 Terracotta
 Object: H: 6.2 × W: 12.3 × D: 7.4 cm (2 7/16 × 4 13/16 × 2 15/16 in.)
 Musée du Louvre, Département des Antiquités orientales
 Image © RMN-Grand Palais / Art Resource, NY. Photo: Mathieu Rabeau
 VEX.2020.1.99



75. *Tablet with Princess Enheduanna's "Exaltation of Inanna"*
 Old Babylonian, 1850 - 1700 B.C.
 Unfired clay
 Object: H: 10.6 × W: 5.8 × D: 3.1 cm (4 3/16 × 2 5/16 × 1 1/4 in.)
 Musée du Louvre, Département des Antiquités orientales
Image © RMN-Grand Palais / Art Resource, NY. *Photo:* Stéphane Maréchal
 VEX.2020.1.100



76. *Fragments of the Law Code of King Hammurabi*
 Old Babylonian, 1792 - 1750 B.C.
 Gabbro
 Dimensions variable
 Musée du Louvre, Département des Antiquités orientales
Image © RMN-Grand Palais / Art Resource, NY. *Photo:* Mathieu Rabeau
 VEX.2020.1.101, .152, .225



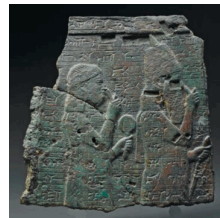
77. *Fragment of a Victory Stele*
 Akkadian, 2278 - 2270 B.C.
 Limestone
 Object: H: 34.5 × W: 28.5 × D: 13 cm (13 9/16 × 11 1/4 × 5 1/8 in.)
 Musée du Louvre, Département des Antiquités orientales
Image © Musée du Louvre, dist. RMN-Grand Palais / Thierry Ollivier / Art Resource, NY
 VEX.2020.1.103



78. *Plaque with Prince Gudea Being Led to Ningeshzida*
 Neo-Sumerian, about 2120 B.C.
 Limestone
 Object: H: 45.7 × W: 36.8 × D: 7.9 cm (18 × 14 1/2 × 3 1/8 in.)
 Musée du Louvre, Département des Antiquités orientales
Image © RMN-Grand Palais / Art Resource, NY. *Photo:* Mathieu Rabeau
 VEX.2020.1.104



79. *Statue of a Mesopotamian Ruler*
 Isin-Larsa / Old Babylonian, 2000 - 1600 B.C.
 Gabbro
 Object: H: 89 × W: 52 × D: 55.5 cm (35 1/16 × 20 1/2 × 21 7/8 in.), 600.1089 kg (35 1/16 × 20 1/2 × 21 7/8 in., 1323 lb.)
 Musée du Louvre, Département des Antiquités orientales
Image © Musée du Louvre, dist. RMN Grand Palais / Art Resource, NY
 VEX.2020.1.105



80. *Plaque with King Esarhaddon and His Mother Naqi'a*
 Neo-Assyrian, 680 - 669 B.C.
 Bronze with traces of gold plating
 Object: H: 33 × W: 31 × D: 6.5 cm (13 × 12 3/16 × 2 9/16 in.)
 Musée du Louvre, Département des Antiquités orientales
Image © RMN-Grand Palais / Art Resource, NY. *Photo:* Franck Raux
 VEX.2020.1.106



81. *Offering Dish*
Neo-Sumerian, about 2120 B.C.
Marble
Object: H: 8 × W: 39.1 × D: 39 cm (3 1/8 × 15 3/8 × 15 3/8 in.)
Musée du Louvre, Département des Antiquités orientales
Image © RMN-Grand Palais / Art Resource, NY. Photo: Franck Raux
VEX.2020.1.107



82. *Libation Goblet of Prince Gudea*
Neo-Sumerian, about 2120 B.C.
Steatite
Object: H: 23.2 × W: 11.1 × D: 11.3 cm (9 1/8 × 4 3/8 × 4 7/16 in.)
Musée du Louvre, Département des Antiquités orientales
Image © RMN-Grand Palais / Art Resource, NY. Photo: Mathieu Rabeau
VEX.2020.1.108



83. *Decorative Element with the Name of King Ur-Nanshe*
Early Dynastic, about 2520 B.C.
Shell
Object: H: 9.7 × W: 3 × D: 0.3 cm (3 13/16 × 1 3/16 × 1/8 in.)
Musée du Louvre, Département des Antiquités orientales
Image © RMN-Grand Palais / Art Resource, NY. Photo: Franck Raux
VEX.2020.1.109



84. *Statue of Prince Gudea as Architect*
Neo-Sumerian, about 2120 B.C.
Gabbro
Object: H: 86 × W: 46 × D: 52 cm (33 7/8 × 18 1/8 × 20 1/2 in.), 499.8639 kg (33 7/8 × 18 1/8 × 20 1/2 in., 1102 lb.)
Musée du Louvre, Département des Antiquités orientales
Image © Musée du Louvre, dist. RMN-Grand Palais / Thierry Ollivier / Art Resource, NY
VEX.2020.1.110



85. *Statuette of a High-Status Woman*
Neo-Sumerian, 2150 - 2000 B.C.
Chlorite
Object: H: 17.8 × W: 11 × D: 6.7 cm (7 × 4 5/16 × 2 5/8 in.)
Musée du Louvre, Département des Antiquités orientales
Image © Musée du Louvre, dist. RMN-Grand Palais / Thierry Ollivier / Art Resource, NY
VEX.2020.1.111



86. *Cone Fragment with the Name of King Urukagina*
Early Dynastic, about 2350 B.C.
Terracotta
Object: H: 9 × W: 11.5 × D: 1.5 cm (3 9/16 × 4 1/2 × 9/16 in.)
Musée du Louvre, Département des Antiquités orientales
Image © RMN-Grand Palais / Art Resource, NY. Photo: Mathieu Rabeau
VEX.2020.1.112



87. *Statuette of a Priest-King*
Late Uruk, about 3300 B.C.
Limestone
Object: H: 30.5 × W: 10.4 × D: 7 cm (12 × 4 1/8 × 2 3/4 in.)
Musée du Louvre, Département des Antiquités orientales
Image © Musée du Louvre, dist. RMN-Grand Palais / Raphaël Chipault / Art Resource, NY
VEX.2020.1.113



88. *Cone with Reforms of King Urukagina*
Early Dynastic, about 2350 B.C.
Terracotta
Object: H: 27 × W: 14.9 × D: 15 cm (10 5/8 × 5 7/8 × 5 7/8 in.)
Musée du Louvre, Département des Antiquités orientales
Image © RMN-Grand Palais / Art Resource, NY. *Photo:* Franck Raux
VEX.2020.1.114



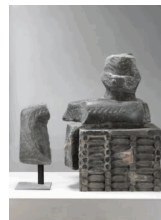
89. *Plaque with King Ur-Nanshe and His Sons*
Early Dynastic, about 2520 B.C.
Limestone
Object: H: 39 × W: 46.5 × D: 6.5 cm (15 3/8 × 18 5/16 × 2 9/16 in.)
Musée du Louvre, Département des Antiquités orientales
Image © Musée du Louvre, dist. RMN-Grand Palais / Mathieu Rabeau / Art Resource, NY
VEX.2020.1.115



90. *Statuette of a High-Status Woman*
Akkadian or Neo-Sumerian, 2200 - 2000 B.C.
Alabaster with traces of pigment
Object: H: 20 × W: 8.2 × D: 6 cm (7 7/8 × 3 1/4 × 2 3/8 in.)
Musée du Louvre, Département des Antiquités orientales
Image © Musée du Louvre, dist. RMN-Grand Palais / Thierry Ollivier / Art Resource, NY
VEX.2020.1.116



91. *Vessel Fragment with a Prisoner*
Akkadian, 2340 - 2150 B.C.
Chlorite
Object: H: 5.4 × W: 3.8 × D: 1.6 cm (2 1/8 × 1 1/2 × 5/8 in.)
Musée du Louvre, Département des Antiquités orientales
Image © RMN-Grand Palais / Art Resource, NY. *Photo:* Franck Raux
VEX.2020.1.117



92. *Fragments of Statues of King Manishtushu*
Akkadian, 2269 - 2255 B.C.
Gabbro
Dimensions variable
Musée du Louvre, Département des Antiquités orientales
Image © RMN-Grand Palais / Art Resource, NY. *Photo:* Raphaël Chipault
VEX.2020.1.118-.119



93. *Fragment of a Lion Sculpture with the Name of King Akurgal*
 Early Dynastic, about 2500 B.C.
 Alabaster
 Object: H: 9.5 × W: 16.8 × D: 9 cm (3 3/4 × 6 5/8 × 3 9/16 in.)
 Musée du Louvre, Département des Antiquités orientales
 Image © Musée du Louvre, dist. RMN-Grand Palais / Raphaël Chipault / Benjamin Soligny / Art Resource, NY
 VEX.2020.1.120



94. *Tablet of King Enmetena*
 Early Dynastic, about 2420 B.C.
 Alabaster
 Object: H: 15.5 × W: 22 × D: 4.5 cm (6 1/8 × 8 11/16 × 1 3/4 in.)
 Musée du Louvre, Département des Antiquités orientales
 Image © Musée du Louvre, dist. RMN-Grand Palais / Raphaël Chipault / Benjamin Soligny / Art Resource, NY
 VEX.2020.1.121



95. *Pivot Stone Fragment with the Name of King Enannatum II*
 Early Dynastic, about 2370 B.C.
 Alabaster
 Object: H: 18 × W: 11.5 × D: 11 cm (7 1/16 × 4 1/2 × 4 5/16 in.)
 Musée du Louvre, Département des Antiquités orientales
 Image © Musée du Louvre, dist. RMN-GP / Raphaël Chipault / Art Resource, NY
 VEX.2020.1.122



96. *Statue Fragment with the Name of King Enentarzi*
 Early Dynastic, about 2365 B.C.
 Limestone
 Object: H: 9.5 × W: 6.4 × D: 3.8 cm (3 3/4 × 2 1/2 × 1 1/2 in.)
 Musée du Louvre, Département des Antiquités orientales
 Image © RMN-Grand Palais / Art Resource, NY. Photo: Mathieu Rabeau
 VEX.2020.1.123



97. *Cylinder Seal Impression with the Name of King Lugalanda*
 Early Dynastic, about 2360 B.C.
 Terracotta
 Object: H: 5.5 × W: 6.4 × D: 1.9 cm (2 3/16 × 2 1/2 × 3/4 in.)
 Musée du Louvre, Département des Antiquités orientales
 Image © Musée du Louvre, dist. RMN-Grand Palais / Raphaël Chipault / Art Resource, NY
 VEX.2020.1.124



98. *Foundation Deposit of King Shulgi: Statuette and Tablet*
 Neo-Sumerian, 2094 - 2047 B.C.
 Bronze; steatite
 Dimensions variable
 Musée du Louvre, Département des Antiquités orientales
 Image © Musée du Louvre, dist. RMN-Grand Palais / Raphaël Chipault / Benjamin Soligny / Art Resource, NY
 VEX.2020.1.125-.126



99. *Brick with the Name of King Enannatum I*
 Early Dynastic, about 2430 B.C.
 Terracotta
 Object: H: 34.8 × W: 25.3 × D: 4.8 cm (13 11/16 × 9 15/16 × 1 7/8 in.)
 Musée du Louvre, Département des Antiquités orientales
 Image © Musée du Louvre, dist. RMN-Grand Palais / Raphaël Chipault / Art Resource, NY
 VEX.2020.1.127



100. *Head of a Ruler*
 Isin-Larsa / Old Babylonian, about 1840 B.C.
 Gabbro
 Object: H: 15.2 × W: 9.7 × D: 11 cm (6 × 3 13/16 × 4 5/16 in.)
 Musée du Louvre, Département des Antiquités orientales
 Image © Musée du Louvre, dist. RMN-Grand Palais / Raphaël Chipault / Art Resource, NY
 VEX.2020.1.128



101. *Head of Prince Gudea*
 Neo-Sumerian, about 2120 B.C.
 Gabbro
 Object: H: 25.2 × W: 25 × D: 27 cm (9 15/16 × 9 13/16 × 10 5/8 in.)
 Musée du Louvre, Département des Antiquités orientales
 Image © RMN-Grand Palais / Art Resource, NY. Photo: Franck Raux
 VEX.2020.1.129



102. *Hammer with the Name of King Shulgi*
 Neo-Sumerian, 2094 - 2047 B.C.
 Bronze
 Object: H: 12.3 × W: 11 × D: 4.4 cm (4 13/16 × 4 5/16 × 1 3/4 in.)
 Musée du Louvre, Département des Antiquités orientales
 Image © RMN-Grand Palais / Art Resource, NY. Photo: Franck Raux
 VEX.2020.1.130



103. *Head of a King of Akkad*
 Akkadian, 2340 - 2150 B.C.
 Gabbro
 Object: H: 11.5 × W: 15 × D: 12 cm (4 1/2 × 5 7/8 × 4 3/4 in.)
 Musée du Louvre, Département des Antiquités orientales
 Image © Musée du Louvre, dist. RMN-Grand Palais / Art Resource, NY
 VEX.2020.1.131



104. *Head of Alexander the Great*
 Hellenistic, about 300 B.C. or 170-160 B.C.
 Marble
 Object: H: 33 × W: 22.5 × D: 20 cm (13 × 8 7/8 × 7 7/8 in.)
 Musée du Louvre, Département des Antiquités grecques, étrusques et romaines
 Image © Musée du Louvre, dist. RMN-Grand Palais / Daniel Lebée / Carine Déambrosis / Art Resource, NY
 VEX.2020.1.132



105. *Cylinder Seal of the Royal Scribe Ibni-Sharrum*
 Akkadian, 2217 - 2193 B.C.
 Black marble
 Object: H: 3.9 × W: 2.5 × D: 2.6 cm (1 9/16 × 1 × 1 in.)
 Musée du Louvre, Département des Antiquités orientales
Image © RMN-Grand Palais / Art Resource, NY. *Photo:*
 Franck Raux
 VEX.2020.1.134



106. *Snake-Dragon Head with Inscription*
 Neo-Sumerian, about 2100 B.C.
 Limestone
 Object: H: 3.2 × W: 7.9 × D: 6 cm (1 1/4 × 3 1/8 × 2 3/8 in.)
 Musée du Louvre, Département des Antiquités orientales
Image © RMN-Grand Palais / Art Resource, NY. *Photo:*
 Franck Raux
 VEX.2020.1.136



107. *Cylinder Seal of a Physician*
 Neo-Sumerian, 2150 - 2000 B.C.
 Alabaster
 Object: W: 3.3 × D: 3.4 × L: 6 cm (1 5/16 × 1 5/16 × 2 3/8 in.)
 Musée du Louvre, Département des Antiquités orientales
Image © Musée du Louvre, dist. RMN-Grand Palais /
 Raphaël Chipault / Benjamin Soligny / Art Resource, NY
 VEX.2020.1.137



108. *Statue of Prince Gudea with a Vase of Flowing Water*
 Neo-Sumerian, about 2120 B.C.
 Dolerite
 Object: H: 62 × W: 25.6 × D: 20 cm (24 7/16 × 10 1/16 × 7 7/8 in.)
 Musée du Louvre, Département des Antiquités orientales
Image © Musée du Louvre, dist. RMN-Grand Palais /
 Raphaël Chipault / Art Resource, NY
 VEX.2020.1.138



109. *Prism with Eight Mathematical Problems*
 Old Babylonian, 1749 - 1712 B.C.
 Terracotta
 Object: W: 7.3 × D: 7.3 × L: 16.8 cm (2 7/8 × 2 7/8 × 6 5/8 in.)
 Musée du Louvre, Département des Antiquités orientales
Image © RMN-Grand Palais / Art Resource, NY. *Photo:*
 Mathieu Rabeau
 VEX.2020.1.139



110. *Head of a Man, Possibly a Ruler*
 Early Dynastic, 2700 - 2600 B.C.
 Limestone, schist, and shell
 Object: H: 6.3 × W: 3.3 × D: 6.6 cm (2 1/2 × 1 5/16 × 2 5/8 in.)
 Musée du Louvre, Département des Antiquités orientales
Image © Musée du Louvre, dist. RMN-Grand Palais /
 Thierry Ollivier / Art Resource, NY
 VEX.2020.1.140



111. *Fragment of a Winged Human-Headed Bull*
Neo-Assyrian, 721 - 705 B.C.
Gypsum
Object: H: 118 × W: 68 × D: 36 cm (46 7/16 × 26 3/4 × 14 3/16 in.)
Musée du Louvre, Département des Antiquités orientales
Image © RMN-Grand Palais / Art Resource, NY. *Photo:* Mathieu Rabeau
VEX.2020.1.141



112. *Tablet with a Cosmic Creation Myth: The Marriage of Heaven and Earth*
Early Dynastic, about 2400 B.C.
Terracotta
Object: H: 8.7 × W: 8.4 × D: 3.1 cm (3 7/16 × 3 5/16 × 1 1/4 in.)
Musée du Louvre, Département des Antiquités orientales
Image © Musée du Louvre, dist. RMN-Grand Palais / Thierry Ollivier / Art Resource, NY
VEX.2020.1.142



113. *Statuette of a Woman Praying*
Early Dynastic, 2500 - 2340 B.C.
Alabaster
Object: H: 21.5 × W: 11.3 × D: 7.3 cm (8 7/16 × 4 7/16 × 2 7/8 in.)
Musée du Louvre, Département des Antiquités orientales
Image © RMN-Grand Palais / Art Resource, NY. *Photo:* Franck Raux
VEX.2020.1.143



114. *Beveled-Rim Bowl*
Proto-Urban / Uruk, 3900 - 3100 B.C.
Terracotta
Object: Diam.: 20.7 cm (8 1/8 in.)
Musée du Louvre, Département des Antiquités orientales
Image © RMN-Grand Palais / Art Resource, NY. *Photo:* Mathieu Rabeau
VEX.2020.1.144



115. *Plaque with a Nursing Woman*
Isin-Larsa / Old Babylonian, 2000 - 1600 B.C.
Terracotta
Object: H: 8 × W: 5.5 × D: 1.8 cm (3 1/8 × 2 3/16 × 11/16 in.)
Musée du Louvre, Département des Antiquités orientales
Image © RMN-Grand Palais / Art Resource, NY. *Photo:* Michel Urtado
VEX.2020.1.145



116. *Cone Fragment with the Name of King Eannatum*
Early Dynastic, about 2450 B.C.
Terracotta
Object: H: 7 × Diam.: 10.5 cm (2 3/4 × 4 1/8 in.) Musée du Louvre, Département des Antiquités orientales
Image © RMN-Grand Palais / Art Resource, NY. *Photo:* Mathieu Rabeau
VEX.2020.1.146



117. *Plaque with the Armed Goddess Ishtar Standing on a Lion*
Isin-Larsa / Old Babylonian, 2000 - 1600 B.C.
Terracotta
Object: H: 14.3 × W: 8.3 × D: 2.5 cm (5 5/8 × 3 1/4 × 1 in.)
Musée du Louvre, Département des Antiquités orientales
Image © RMN-Grand Palais / Art Resource, NY. *Photo:* Franck Raux
VEX.2020.1.147



118. *Animal-Head Stamp Seal*
Proto-Urban / Uruk, 3900 - 3100 B.C.
Marble
Object: W: 2.2 × D: 1.9 × L: 2.5 cm (7/8 × 3/4 × 1 in.)
Musée du Louvre, Département des Antiquités orientales
Image © Musée du Louvre, dist. RMN-Grand Palais / Raphaël Chipault / Benjamin Soligny / Art Resource, NY
VEX.2020.1.148



119. *Plaque with a Lion-Eagle Attacking a Bull-Man*
Early Dynastic, about 2500 B.C.
Shell
Object: H: 5.5 × W: 2.2 cm (2 3/16 × 7/8 in.)
Musée du Louvre, Département des Antiquités orientales
Image © Musée du Louvre, dist. RMN-Grand Palais / Thierry Ollivier / Art Resource, NY
VEX.2020.1.149



120. *Relief Fragment with a Royal Chariot and Officers*
Neo-Assyrian, 668 - 627 B.C.
Gypsum
Object: H: 5 × W: 46.5 × D: 5 cm (21 5/8 × 18 5/16 × 1 15/16 in.)
Musée du Louvre, Département des Antiquités orientales
Image © Musée du Louvre, dist. RMN-Grand Palais / Philippe Fuzeau / Art Resource, NY
VEX.2020.1.150



121. *Statuette of King Gilgamesh Trampling the Head of the Monster Humbaba*
Isin-Larsa / Old Babylonian, 2000 - 1600 B.C.
Painted terracotta
Object: H: 17.3 × W: 5 × D: 4.5 cm (6 13/16 × 1 15/16 × 1 3/4 in.)
Musée du Louvre, Département des Antiquités orientales
Image © Musée du Louvre, dist. RMN-Grand Palais / Franck Raux / Art Resource, NY
VEX.2020.1.151



122. *Strainer*
Early Dynastic to Middle Babylonian, 2900 - 1100 B.C.
Terracotta
Object: H: 3.2 × Diam.: 9.6 cm, 0.08 kg (1 1/4 × 3 3/4 in., 0.1764 lb.)
Musée du Louvre, Département des Antiquités orientales
Image © RMN-Grand Palais / Art Resource, NY. *Photo:* Mathieu Rabeau
VEX.2020.1.166

