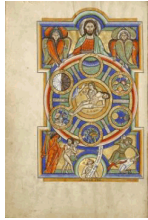


Rare Finds: Ten Years of Collecting Manuscripts

February 12 to April 20, 2008

The J. Paul Getty Museum at the Getty Center



1. German

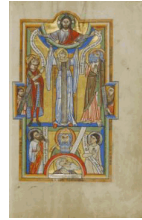
[The Creation of the World](#), about 1170s
from [Stammheim Missal](#)

Tempera colors, gold leaf, silver leaf, and ink on parchment

Leaf: 28.2 x 18.9 cm (11 1/8 x 7 7/16 in.)

The J. Paul Getty Museum, Los Angeles

Ms. 64, fol. 10v (97.MG.21.10v)



2. German

[Wisdom](#), about 1170s
from [Stammheim Missal](#)

Tempera colors, gold leaf, silver leaf, and ink on parchment

Leaf: 28.2 x 18.9 cm (11 1/8 x 7 7/16 in.)

The J. Paul Getty Museum, Los Angeles

Ms. 64, fol. 11 (97.MG.21.11)



3. Master of the Ingeborg Psalter

French, active about 1195 - about 1210

[Initial Q: David Before Saul](#), after 1205

from [Psalter](#)

Tempera colors and gold leaf on parchment

Leaf: 31 x 21.9 cm (12 3/16 x 8 5/8 in.)

The J. Paul Getty Museum, Los Angeles

Ms. 66, fol. 55 (99.MK.48.55)



4. Spanish

[The Lamb Defeating the Ten Kings](#), about 1220 - 1235

from [Commentary on the Apocalypse](#)

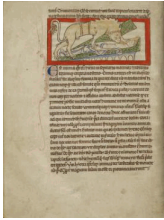
Leaf from [Commentarius in Apocalypsim](#)

Tempera colors and gold leaf on parchment

Leaf: 29.4 x 23.5 cm (11 9/16 x 9 1/4 in.)

The J. Paul Getty Museum, Los Angeles

Ms. 77, recto (2003.103.recto)



5. English

[A Hyena](#), about 1250 - 1260

from [Northumberland Bestiary](#)

Pen-and-ink drawings tinted with body color and translucent washes on parchment

Page: 21 x 15.7 cm (8 1/4 x 6 3/16 in.)

The J. Paul Getty Museum, Los Angeles

Ms. 100, fol. 12v (2007.16.12v)



6. English

[A Hydrus; A Hydra](#), about 1250 - 1260

from [Northumberland Bestiary](#)

Pen-and-ink drawings tinted with body color and translucent washes on parchment

Page: 21 x 15.7 cm (8 1/4 x 6 3/16 in.)

The J. Paul Getty Museum, Los Angeles

Ms. 100, fol. 13 (2007.16.13)



7. Byzantine

[Saint Mark](#), Late 13th century

from [Gospel book](#)

Tempera colors, gold leaf, gold ink, and ink on parchment

Leaf: 21 x 14.9 cm (8 1/4 x 5 7/8 in.)

The J. Paul Getty Museum, Los Angeles

Ms. 65, fol. 103v (98.MB.151.103v)



8. Byzantine

[Decorated Text Page](#), Late 13th century

from [Gospel book](#)

Tempera colors, gold leaf, gold ink, and ink on parchment

Leaf: 21 x 14.9 cm (8 1/4 x 5 7/8 in.)

The J. Paul Getty Museum, Los Angeles

Ms. 65, fol. 104 (98.MB.151.104)



9. Master of the Dominican Effigies

Italian, active 2nd quarter of the 14th century

[Pentecost](#), about 1340

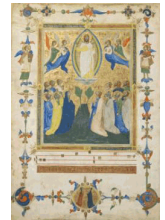
Leaf from the Laudario of Sant'Agnese

Tempera and gold on parchment

Leaf: 43 x 31.7 cm (16 15/16 x 12 1/2 in.)

The J. Paul Getty Museum, Los Angeles

Ms. 80, verso (2003.106.verso)



10. Pacino di Bonaguida

Italian (Florentine), died before 1340, active 1302

[The Ascension of Christ](#), about 1340

Leaf from the Laudario of Sant'Agnese

Tempera and gold on parchment

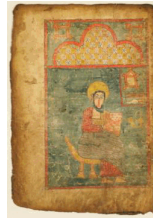
Leaf: 44.4 x 31.8 cm (17 1/2 x 12 1/2 in.)

The J. Paul Getty Museum, Los Angeles

Ms. 80a, verso (2005.26.verso)



11. Pacino di Bonaguida
Italian (Florentine), died before 1340, active 1302
[The Martyrdom of Saint Lawrence](#), about 1340
Cutting from the Laudario of Sant'Agnese
Tempera and gold leaf on parchment
Leaf: 19 x 20.8 cm (7 1/2 x 8 3/16 in.)
The J. Paul Getty Museum, Los Angeles
Ms. 80b, verso (2006.13.verso)



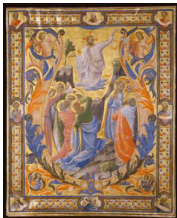
12. Ethiopian
[Saint John](#), Late 14th - early 15th century
Leaf from a Gospel book
Tempera colors on parchment
Leaf: 33.7 x 23.3 cm (13 1/4 x 9 3/16 in.)
Gift of Sam Fogg. The J. Paul Getty Museum, Los Angeles
Ms. 89, verso (2005.3.verso)



13. Circle of the Master of the Golden Bull
Bohemian, active about 1400 - 1405
[Initial H: Saint Stephen](#), about 1405
Leaf from an antiphonal
Tempera colors, gold leaf, and gold paint on parchment
Leaf: 56.5 x 39.7 cm (22 1/4 x 15 5/8 in.)
The J. Paul Getty Museum, Los Angeles
Ms. 97, leaf 1 (2005.33.1.recto)



14. Virgil Master
French, active about 1380 - 1420
[Alchandreus Presents His Work to a King](#), about 1405
from [Book of the Philosopher Alchandreus](#)
Tempera colors, gold paint and gold leaf on parchment
Leaf: 39 x 30.5 cm (15 3/8 x 12 in.)
The J. Paul Getty Museum, Los Angeles
Ms. 72, fol. 2 (2003.25.2)



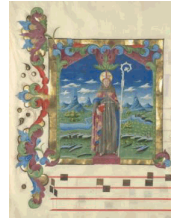
15. Designed by Lorenzo Monaco
Italian, about 1370 - 1423 or 1424
and completed by Zanobi di Benedetto Strozzi
Italian, 1412 - 1468
and Battista di Biagio Sanguini
Italian, 1393 - 1451
[Initial V: The Ascension](#), Designed about 1410;
Completed about 1431
Cutting from a gradual
Tempera and gold on parchment
Leaf: 40.2 x 32.7 cm (15 13/16 x 12 7/8 in.)
The J. Paul Getty Museum, Los Angeles
Ms. 78, recto (2003.104.recto)



16. Attributed to Stefano da Verona
Italian (Lombard), 1374 - after 1438
[Initial A: Pentecost](#), about 1430 - 1435
Cutting from an antiphonal
Tempera and gold on parchment
Leaf: 11.9 x 12.5 cm (4 11/16 x 4 15/16 in.)
The J. Paul Getty Museum, Los Angeles
Ms. 95, recto (2005.28.recto)



17. Master of the Berlin Crucifixion or circle
 Master of Jean Chevrot or circle
Christ Blessing, about 1440 - 1445
 Leaf from the Turin-Milan Hours
 Tempera colors and gold leaf on parchment
 Leaf: 27.2 x 17.6 cm (10 11/16 x 6 15/16 in.)
 The J. Paul Getty Museum, Los Angeles
 Ms. 67, verso (2000.33.verso)



18. Franco dei Russi
 Italian, active about 1453 - 1482
Initial T: Saint Louis of Toulouse, about 1453 - 1463
 Leaf from the Antiphonal of Cardinal Bessarion
 Tempera, gold leaf, and gold paint on parchment
 Leaf: 73 x 53.4 cm (28 3/4 x 21 in.)
 The J. Paul Getty Museum, Los Angeles
 Ms. 90, recto (2005.20.recto)



19. Attributed to Franco dei Russi
 Italian, active about 1453 - 1482
Initial E: David Lifting up His Soul to God, about 1455 - 1460/1463
 Leaf from the Antiphonal of Cardinal Bessarion
 Tempera colors, gold leaf, and ink on parchment
 Image: 20.3 x 19.1 cm (8 x 7 1/2 in.)
 The J. Paul Getty Museum, Los Angeles
 Ms. 99, recto (2007.30.recto)



20. Taddeo Crivelli
 Italian, died about 1479, active about 1451 - 1479
Initial B: The Trinity, about 1460 - 1470
 Cutting from a gradual
 Tempera and gold on parchment
 Leaf: 16 x 16 cm (6 5/16 x 6 5/16 in.)
 The J. Paul Getty Museum, Los Angeles
 Ms. 88, recto (2005.2.recto)



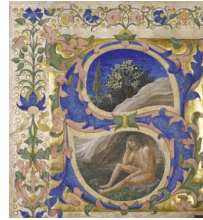
21. Antoine de Lonhy
 French, active about 1460 - about 1490
Christ in Majesty, about 1460
 Leaf from a missal
 Tempera colors, gold leaf, and gold paint on parchment
 Leaf: 34.5 x 25 cm (13 9/16 x 9 13/16 in.)
 Gift of the Emerson Family in honor of John S. Bonnell.
 The J. Paul Getty Museum, Los Angeles
 Ms. 69, recto (2001.84.recto)



22. French
An Emperor at Court, about 1460 - 1470
 from **Story of Two Lovers**
 Tempera colors, gold leaf, gold paint, and ink on parchment
 Leaf: 17.6 x 11.4 cm (6 15/16 x 4 1/2 in.)
 The J. Paul Getty Museum, Los Angeles
 Ms. 68, fol. 14v (2001.45.14v)



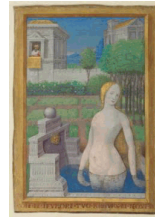
23. Francesco di Antonio del Chierico
Italian, 1433 - 1484, active 1452
Historiated Initial, Third quarter of the 15th century
Cutting from a choir book
Tempera and gold on parchment
The J. Paul Getty Museum, Los Angeles
Ms. 74 a (2003.88.a)



24. Francesco di Antonio del Chierico
Italian, 1433 - 1484, active 1452
Initial S: Job, Third quarter of the 15th century
Cutting from a choir book
Tempera and gold on parchment
The J. Paul Getty Museum, Los Angeles
Ms. 74 a, recto (2003.88.a.recto)



25. Attributed to Cosmè Tura
Italian (Ferrarese), about 1430 - 1495
Initial D: Saint John the Baptist, about 1470 - 1480
Cutting from a Franciscan gradual
Tempera and gold on parchment
Leaf: 35 x 29.8 cm (13 3/4 x 11 3/4 in.)
The J. Paul Getty Museum, Los Angeles
Ms. 94, verso (2005.27.verso)



26. Jean Bourdichon
French, 1457 - 1521, active Tours, France Early 1480s - 1521
Bathsheba Bathing, 1498 - 1499
Leaf from the Hours of Louis XII
Tempera and gold on parchment
Leaf: 24.3 x 17 cm (9 9/16 x 6 11/16 in.)
The J. Paul Getty Museum, Los Angeles
Ms. 79, recto (2003.105.recto)



27. Jean Bourdichon
French, 1457 - 1521, active Tours, France Early 1480s - 1521
Louis XII of France Kneeling in Prayer, Accompanied by Saints Michael, Charlemagne, Louis, and Denis, 1498 - 1499
Leaf from the Hours of Louis XII
Tempera and gold on parchment
Leaf: 24.3 x 15.7 cm (9 9/16 x 6 3/16 in.)
The J. Paul Getty Museum, Los Angeles
Ms. 79a, recto (2004.1.recto)



28. Jean Bourdichon
French, 1457 - 1521, active Tours, France Early 1480s - 1521
The Presentation in the Temple, 1498 - 1499
Leaf from the Hours of Louis XII
Tempera and gold on parchment
Leaf: 24 x 17 cm (9 7/16 x 6 11/16 in.)
The J. Paul Getty Museum, Los Angeles
Ms. 79b, verso (2004.66.verso)



29. Matteo da Milano

Italian, active 1492 - 1523

Initial A: King David, about 1520

from Missal

Tempera and gold on parchment

Leaf: 33.6 x 23.4 cm (13 1/4 x 9 3/16 in.)

The J. Paul Getty Museum, Los Angeles

Ms. 87, fol. 52v (2004.65.52v)



The J. Paul Getty Museum

October 16, 2008

Page 6 of 6

Additional information about some of these works of art can be found by searching getty.edu at <http://www.getty.edu/art/gettyguide/>

© 2008 J. Paul Getty Trust