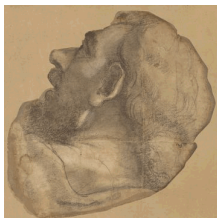


## The Lost Murals of Renaissance Rome

May 31 to September 4, 2022

The J. Paul Getty Museum at the Getty Center



1. Sebastiano del Piombo  
Italian, about 1485 - 1547  
*Cartoon for the Head of Saint James*, About 1520  
Black and white chalk on two joined sheets of paper,  
silhouetted, pricked for transfer  
30.2 × 30.5 cm (11 7/8 × 12 in.)  
The J. Paul Getty Museum, Los Angeles  
82.GB.107



2. Polidoro da Caravaggio (Polidoro Caldara)  
Italian, 1495/1500 - about 1543  
*Study of a Seated Man*, About 1535  
Red chalk  
20.6 × 18.4 cm (8 1/8 × 7 1/4 in.)  
The J. Paul Getty Museum, Los Angeles  
84.GB.31.1, recto



3. Bernardino Gatti  
Italian, about 1495 - 1575  
*Study of an Apostle*, About 1560-70  
Black and red chalk and brush with gray-black ink and  
gray wash, heightened with white gouache, squared in  
red chalk  
39.8 × 21.8 cm (15 11/16 × 8 9/16 in.)  
The J. Paul Getty Museum, Los Angeles  
84.GG.651



4. Federico Zuccaro  
Italian, about 1541 - 1609  
*View of Saint Peter's, Rome*, 1603  
Red chalk  
25.9 × 41.3 cm (10 3/16 × 16 1/4 in.)  
The J. Paul Getty Museum, Los Angeles  
85.GB.228, recto

5. Pietro Santi Bartoli  
Italian, 1635 - 1700  
After Polidoro da Caravaggio and  
Maturino da Firenze  
*Scene from Frescoes on the Palazzo  
Gaddi, Rome, About 1675*  
Etching  
Sheet: 23 × 64 cm (9 1/16 × 25 3/16 in.)  
Getty Research Institute  
90-F72.1

6. Pietro Santi Bartoli  
Italian, 1635 - 1700  
After Polidoro da Caravaggio and  
Maturino da Firenze  
*Scene from Frescoes on the Palazzo  
Gaddi, Rome, About 1675*  
Etching  
Sheet: 23.4 × 65 cm (9 3/16 × 25 9/16 in.)  
Getty Research Institute  
90-F72.2

7. Pietro Santi Bartoli  
Italian, 1635 - 1700  
After Polidoro da Caravaggio and  
Maturino da Firenze  
*Scene from Frescoes on the Palazzo  
Gaddi, Rome, About 1675*  
Etching  
Sheet: 22.5 × 64.3 cm (8 7/8 × 25 5/16 in.)  
Getty Research Institute  
90-F72.3

8. Pietro Santi Bartoli  
Italian, 1635 - 1700  
After Polidoro da Caravaggio and  
Maturino da Firenze  
*Scene from Frescoes on the Palazzo  
Gaddi, Rome, About 1675*  
Etching  
Sheet: 22.5 × 64.4 cm (8 7/8 × 25 3/8 in.)  
Getty Research Institute  
90-F72.4



9. Pietro Santi Bartoli  
Italian, 1635 - 1700  
After Polidoro da Caravaggio and  
Maturino da Firenze  
*Scene from Frescoes on the Palazzo  
Gaddi, Rome, About 1675*  
Etching  
Sheet: 23.2 × 64 cm (9 1/8 × 25 3/16 in.)  
Getty Research Institute  
90-F72.5

10. Lelio Orsi  
Italian, 1511 - 1587  
*Design for a Frieze*, About 1555  
Pen and brown ink and brush with brown wash, with  
white gouache, partially squared in black chalk  
22.9 × 41.1 cm (9 × 16 3/16 in.)  
The J. Paul Getty Museum, Los Angeles  
90.GG.132



11. Taddeo Zuccaro  
 Italian, 1529 - 1566  
*Soldiers Carrying a Model of a City*, About 1548  
 Pen and brown ink, brush with brown wash, and white heightening, over black chalk on blue paper  
 15.9 × 27.6 cm (6 1/4 × 10 7/8 in.)  
 The J. Paul Getty Museum, Los Angeles  
 96.GB.329



12. Federico Zuccaro  
 Italian, about 1541 - 1609  
*Allegories of Faith and Hope, Flanking the Zuccaro Emblem*, About 1595  
 Pen and brown ink and brush with brown wash over black chalk  
 18.1 × 41.7 cm (7 1/8 × 16 7/16 in.)  
 The J. Paul Getty Museum, Los Angeles  
 99.GA.6.1



13. Federico Zuccaro  
 Italian, about 1541 - 1609  
*Taddeo Leaving Home Escorted by Two Guardian Angels*, About 1595  
 Pen and brown ink and brush with brown wash over black chalk and touches of red chalk  
 27.4 × 26 cm (10 13/16 × 10 1/4 in.)  
 The J. Paul Getty Museum, Los Angeles  
 99.GA.6.2



14. Federico Zuccaro  
 Italian, about 1541 - 1609  
*Pallas Athena Shows Taddeo the Prospect of Rome*, About 1595  
 Pen and brown ink and brush with brown wash over red chalk  
 42 × 16.2 cm (16 9/16 × 6 3/8 in.)  
 The J. Paul Getty Museum, Los Angeles  
 99.GA.6.3



15. Federico Zuccaro  
 Italian, about 1541 - 1609  
*Taddeo at the Entrance to Rome*, About 1595  
 Pen and brown ink and brush with brown wash over black chalk  
 40.9 × 17.4 cm (16 1/8 × 6 7/8 in.)  
 The J. Paul Getty Museum, Los Angeles  
 99.GA.6.4



16. Federico Zuccaro  
 Italian, about 1541 - 1609  
*Taddeo Rebuffed by Francesco il Sant'Angelo*, About 1595  
 Pen and brown ink and brush with brown wash over black chalk  
 17.9 × 41.5 cm (7 1/16 × 16 5/16 in.)  
 The J. Paul Getty Museum, Los Angeles  
 99.GA.6.5



17. Federico Zuccaro  
Italian, about 1541 - 1609  
*Allegories of Fortitude and Patience*, About 1595  
Pen and brown ink and brush with brown wash over black chalk  
17.3 × 42 cm (6 13/16 × 16 9/16 in.)  
The J. Paul Getty Museum, Los Angeles  
99.GA.6.6



18. Federico Zuccaro  
Italian, about 1541 - 1609  
*Taddeo in the House of Giovanni Piero Calabrese*, About 1595  
Pen and brown ink and brush with brown wash over black chalk  
27.5 × 26.6 cm (10 13/16 × 10 1/2 in.)  
The J. Paul Getty Museum, Los Angeles  
99.GA.6.7



19. Federico Zuccaro  
Italian, about 1541 - 1609  
*Taddeo Sent on an Errand by Calabrese's Wife*, About 1595  
Pen and brown ink and brush with brown wash over black chalk  
42 × 17.1 cm (16 9/16 × 6 3/4 in.)  
The J. Paul Getty Museum, Los Angeles  
99.GA.6.8



20. Federico Zuccaro  
Italian, about 1541 - 1609  
*Taddeo Drawing by Moonlight in Calabrese's House*, About 1595  
Pen and brown ink and brush with brown wash over black chalk  
42.1 × 17.7 cm (16 9/16 × 6 15/16 in.)  
The J. Paul Getty Museum, Los Angeles  
99.GA.6.9



21. Federico Zuccaro  
Italian, about 1541 - 1609  
*Taddeo Employed on Menial Tasks at Calabrese's House*, About 1595  
Pen and brown ink and brush with brown wash over black chalk  
17.6 × 41.9 cm (6 15/16 × 16 1/2 in.)  
The J. Paul Getty Museum, Los Angeles  
99.GA.6.10



22. Federico Zuccaro  
Italian, about 1541 - 1609  
*Two Child Angels, Symbolizing Patience and Industry*, About 1595  
Pen and brown ink and brush with brown wash over black chalk  
17.5 × 41.8 cm (6 7/8 × 16 7/16 in.)  
The J. Paul Getty Museum, Los Angeles  
99.GA.6.11



23. Federico Zuccaro  
Italian, about 1541 - 1609  
*Taddeo Drawing after the Antique, and Copying a Facade by Polidoro*, About 1595  
Pen and brown ink and brush with brown wash over black chalk and touches of red chalk  
42.3 × 17.5 cm (16 5/8 × 6 7/8 in.)  
The J. Paul Getty Museum, Los Angeles  
99.GA.6.12



24. Federico Zuccaro  
Italian, about 1541 - 1609  
*Taddeo Copying Raphael's Frescoes in the Loggia of the Villa Farnesina*, About 1595  
Pen and brown ink and brush with brown wash over black chalk and touches of red chalk  
42.4 × 17.5 cm (16 11/16 × 6 7/8 in.)  
The J. Paul Getty Museum, Los Angeles  
99.GA.6.13



25. Federico Zuccaro  
Italian, about 1541 - 1609  
*Taddeo's Hallucination*, About 1595  
Pen and brown ink and brush with brown wash over black chalk and touches of red chalk  
27.5 × 27.3 cm (10 13/16 × 10 3/4 in.)  
The J. Paul Getty Museum, Los Angeles  
99.GA.6.14



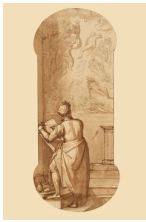
26. Federico Zuccaro  
Italian, about 1541 - 1609  
*Taddeo Returning Home with the Sack of Stones*, About 1595  
Pen and brown ink and brush with brown wash over black chalk and touches of red chalk  
17.7 × 42.3 cm (6 15/16 × 16 5/8 in.)  
The J. Paul Getty Museum, Los Angeles  
99.GA.6.15



27. Federico Zuccaro  
Italian, about 1541 - 1609  
*Taddeo Returns to Rome, Escorted by Drawing and Spirit toward the Three Graces*, About 1595  
Pen and brown ink and brush with brown wash over black chalk and touches of red chalk  
42.6 × 18 cm (16 3/4 × 7 1/16 in.)  
The J. Paul Getty Museum, Los Angeles  
99.GA.6.16



28. Federico Zuccaro  
Italian, about 1541 - 1609  
*Taddeo in the Belvedere Court in the Vatican*, About 1595  
Pen and brown ink and brush with brown wash over black chalk and touches of red chalk  
17.5 × 42.5 cm (6 7/8 × 16 3/4 in.)  
The J. Paul Getty Museum, Los Angeles  
99.GA.6.17



29. Federico Zuccaro  
 Italian, about 1541 - 1609  
*Taddeo in the Sistine Chapel Drawing Michelangelo's Last Judgment*, About 1595  
 Pen and brown ink and brush with brown wash over black chalk and touches of red chalk  
 41.9 × 17.7 cm (16 1/2 × 6 15/16 in.)  
 The J. Paul Getty Museum, Los Angeles  
 99.GA.6.18



30. Federico Zuccaro  
 Italian, about 1541 - 1609  
*Taddeo Decorating the Facade of the Palazzo Mattei*, About 1595  
 Pen and brown ink and brush with brown wash over black chalk and touches of red chalk  
 25 × 42.2 cm (9 13/16 × 16 5/8 in.)  
 The J. Paul Getty Museum, Los Angeles  
 99.GA.6.19



31. Federico Zuccaro  
 Italian, about 1541 - 1609  
*Allegories of Study and Intelligence, Flanking the Zuccaro Emblem*, About 1595  
 Pen and brown ink and brush with brown wash over black chalk and touches of red chalk  
 17.6 × 42.5 cm (6 15/16 × 16 3/4 in.)  
 The J. Paul Getty Museum, Los Angeles  
 99.GA.6.20



32. Hendrick Goltzius  
 Dutch, 1558 - 1617  
 After Polidoro da Caravaggio  
 Italian, about 1495 - about 1543  
*Jupiter*, 1592  
 Engraving  
 Sheet: 34.9 × 21.3 cm (13 3/4 × 8 3/8 in.)  
 Getty Research Institute  
 2001.PR.20.1

33. Hendrick Goltzius  
 Dutch, 1558 - 1617  
 After Polidoro da Caravaggio  
 Italian, about 1495 - about 1543  
*Neptune*, 1592  
 Engraving  
 Sheet: 34.9 × 21.4 cm (13 3/4 × 8 7/16 in.)  
 Getty Research Institute  
 2001.PR.20.2

34. Hendrick Goltzius  
 Dutch, 1558 - 1617  
 After Polidoro da Caravaggio  
 Italian, about 1495 - about 1543  
*Pluto*, 1592  
 Engraving  
 Sheet: 35 × 21.5 cm (13 3/4 × 8 7/16 in.)  
 Getty Research Institute  
 2001.PR.20.3

35. Hendrick Goltzius  
Dutch, 1558 - 1617  
After Polidoro da Caravaggio  
Italian, about 1495 - about 1543  
*Vulcan*, 1592  
Engraving  
Sheet: 35 × 21.5 cm (13 3/4 × 8 7/16 in.)  
Getty Research Institute  
2001.PR.20.4
36. Hendrick Goltzius  
Dutch, 1558 - 1617  
After Polidoro da Caravaggio  
Italian, about 1495 - about 1543  
*Saturn*, 1592  
Engraving  
Sheet: 35.3 × 21.5 cm (13 7/8 × 8 7/16 in.)  
Getty Research Institute  
2001.PR.20.5
37. Hendrick Goltzius  
Dutch, 1558 - 1617  
After Polidoro da Caravaggio  
Italian, about 1495 - about 1543  
*Mercury*, 1592  
Engraving  
Sheet: 35 × 21.4 cm (13 3/4 × 8 7/16 in.)  
Getty Research Institute  
2001.PR.20.6
38. Hendrick Goltzius  
Dutch, 1558 - 1617  
After Polidoro da Caravaggio  
Italian, about 1495 - about 1543  
*Apollo*, 1592  
Engraving  
Sheet: 35 × 21.6 cm (13 3/4 × 8 1/2 in.)  
Getty Research Institute  
2001.PR.20.7
39. Hendrick Goltzius  
Dutch, 1558 - 1617  
After Polidoro da Caravaggio  
Italian, about 1495 - about 1543  
*Bacchus*, 1592  
Engraving  
Sheet: 35 × 21.5 cm (13 3/4 × 8 7/16 in.)  
Getty Research Institute  
2001.PR.20.8
40. Jan Saenredam  
Dutch, about 1565 - 1607  
After Hendrik Goltzius  
Dutch, 1558 - 1617  
After Polidoro da Caravaggio  
Italian, about 1495 - about 1543  
*The Wounded Scipio Being Supported by His Soldiers*  
Engraving  
H: 25.4 cm, W: 34.29 cm  
Getty Research Institute  
2001.PR.23



41. Attributed to Maturino da Firenze

Italian, born 1489

*Exodus*, About 1525

Pen and brown ink and brush with wash over black chalk,  
with white heightening

Unframed: 24.5 × 16.9 cm (9 5/8 × 6 5/8 in.)

Private collection, Los Angeles

L.2022.1