

LONDON CALLING

BACON
FREUD
KOSSOFF
ANDREWS
AUERBACH
KITAJ

OBJECT LIST

LONDON CALLING: BACON, FREUD, KOSSOFF, ANDREWS, AUERBACH, AND KITAJ

At the J. Paul Getty Museum, Getty Center
July 26 – November 13, 2016

Works listed in order of display

1.



Study for a Man in a Landscape (Digswell),
1959
Michael Andrews
English, 1928 – 1995
Oil on canvas
40.6 × 35.9 cm (16 × 14 1/8 in.)
Tate: Presented by the executors of the estate
of David Wilkie 1993
*© the Estate of Michael Andrews, courtesy
James Hyman Gallery, London*
Photo
© Tate, London 2016

2.



Lights IV: The Pier and the Road, 1973
Michael Andrews
English, 1928 – 1995
Acrylic and graphite on canvas
152.4 × 213.4 cm (60 × 84 in.)
Lent by The Metropolitan Museum of Art,
Purchase, Mr. and Mrs. Milton Petrie Gift,
1981
*© the Estate of Michael Andrews, courtesy
James Hyman Gallery, London*
Image copyright
© The Metropolitan Museum of Art. Image
source: Art Resource, NY



LONDON CALLING

BACON
FREUD
KOSSOFF
ANDREWS
AUERBACH
KITAJ

3.



Thames Painting, The Estuary, 1994 – 1995
Michael Andrews
English, 1928 – 1995
Oil with sand and ash embedded on canvas
Framed: 213 × 182.5 cm (83 7/8 × 71 7/8 in.)
Pallant House Gallery, Chichester, UK,
(Wilson Gift through The Art Fund 2006)
© the Estate of Michael Andrews, courtesy
James Hyman Gallery, London
Image: Bridgeman Images

4.



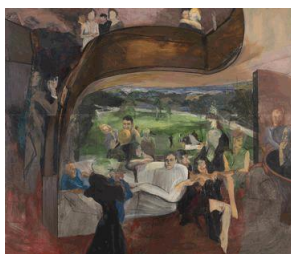
Melanie and Me Swimming, 1978 – 1979
Michael Andrews
English, 1928 – 1995
Acrylic on canvas
182.9 × 182.9 cm (72 × 72 in.)
Tate: Purchased 1979
© the Estate of Michael Andrews, courtesy
James Hyman Gallery, London
Photo © Tate, London 2016

5.



A Man Who Suddenly Fell Over, 1952
Michael Andrews
English, 1928 – 1995
Oil on hardboard
120.6 × 172.7 cm (47 1/2 × 68 in.)
Tate: Purchased 1958
© the Estate of Michael Andrews, courtesy
James Hyman Gallery, London
Photo © Tate, London 2016

6.



The Deer Park, 1962
Michael Andrews
English, 1928 – 1995
Oil on board
214 × 244.5 cm (84 1/4 × 96 1/4 in.)
Tate: Purchased 1974
© the Estate of Michael Andrews, courtesy
James Hyman Gallery, London
Photo © Tate, London 2016

LONDON CALLING

BACON
FREUD
KOSSOFF
ANDREWS
AUERBACH
KITAJ

7.



Mornington Crescent – Summer Morning,
2004

Frank Auerbach

German, born 1931

Oil on canvas

132.7 × 132.3 cm (52 1/4 × 52 1/16 in.)

Tate: Accepted by HM Government in lieu of
inheritance tax and allocated to Tate 2015

© Frank Auerbach, courtesy Marlborough
Fine Art

Photo © Tate, London 2016

8.



Primrose Hill, 1967 - 1968

Frank Auerbach

German, born 1931

Oil on Masonite attached to auxiliary wooden
framework

121.9 × 146.7 cm (48 × 57 3/4 in.)

Tate: Purchased 1971

© Frank Auerbach, courtesy Marlborough
Fine Art

Photo © Tate, London 2016

9.



Primrose Hill, 1971

Frank Auerbach

German, born 1931

Oil on Masonite attached to auxiliary wooden
framework

101.5 × 127 cm (39 15/16 × 50 in.)

Courtesy of the Daniel Katz Family Trust,
London

© Frank Auerbach, courtesy Marlborough
Fine Art

10.



Study after Titian II, 1965

Frank Auerbach

German, born 1931

Oil on canvas

67.3 × 62.2 cm (26 1/2 × 24 1/2 in.)

Tate: Presented by the executors of the estate
of David Wilkie 1993

© Frank Auerbach, courtesy Marlborough
Fine Art

Photo © Tate, London 2016

LONDON CALLING

BACON
FREUD
KOSSOFF
ANDREWS
AUERBACH
KITAJ

11.



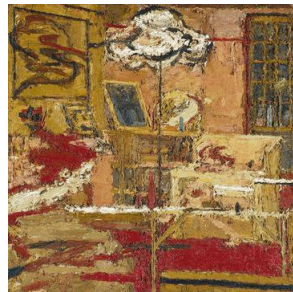
The Origin of the Great Bear, 1967 – 1968
Frank Auerbach
German, born 1931
Oil on Masonite attached to auxiliary wooden framework
114.6 × 140.2 cm (45 1/8 × 55 3/16 in.)
Tate: Presented by the executors of the estate of David Wilkie 1993
© Frank Auerbach, courtesy Marlborough Fine Art
Photo © Tate, London 2016

12.



Oxford Street Building Site I, 1959 - 1960
Frank Auerbach
German, born 1931
Oil on masonite supported by wooden tray
198.1 × 153.7 cm (78 × 60 1/2 in.)
Tate: Purchased 1961
© Frank Auerbach, courtesy Marlborough Fine Art
Photo © Tate, London 2016

13.



The Sitting Room, 1964
Frank Auerbach
German, born 1931
Oil on masonite attached to auxiliary wooden framework
128.2 × 127.7 cm (50 1/2 × 50 1/4 in.)
Tate: Presented by the Friends of the Tate Gallery 1984
© Frank Auerbach, courtesy Marlborough Fine Art
Photo © Tate, London 2016

14.



To the Studios, 1990 – 1991
Frank Auerbach
German, born 1931
Oil on canvas
169.5 × 149.4 cm (66 3/4 × 58 13/16 in.)
Tate: Purchased 1992
© Frank Auerbach, courtesy Marlborough Fine Art
Photo © Tate, London 2016



LONDON CALLING

BACON
FREUD
KOSSOFF
ANDREWS
AUERBACH
KITAJ

15.



E. O. W. Nude, 1953 - 1954
Frank Auerbach
German, born 1931
Oil on masonite attached to auxiliary wooden framework
50.8 × 76.8 cm (20 × 30 1/4 in.)
Tate: Purchased 1959
© Frank Auerbach, courtesy Marlborough Fine Art
Photo © Tate, London 2016

16.



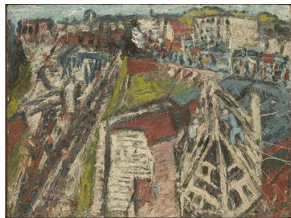
J. Y. M. Seated No. 1, 1981
Frank Auerbach
German, born 1931
Oil on masonite attached to auxiliary wooden framework
71.1 × 61 cm (28 × 24 in.)
Tate: Purchased 1981
© Frank Auerbach, courtesy Marlborough Fine Art
Photo © Tate, London 2016

17.



Mornington Crescent with the Statue of Sickert's Father Father-in-Law, 1966
Frank Auerbach
German, born 1931
Oil on masonite attached to auxiliary wooden framework
122 × 152.5 cm (48 1/16 × 60 1/16 in.)
Courtesy of the Daniel Katz Family Trust, London
© Frank Auerbach, courtesy Marlborough Fine Art

18.



Demolition of the Old House, Dalston Junction, Summer 1974, 1974
Leon Kossoff
British, born 1926
Oil on masonite attached to auxiliary wooden framework
160 × 218.4 cm (63 × 86 in.)
Tate: Purchased 1975
© Leon Kossoff
Photo © Tate, London 2016



LONDON CALLING

BACON
FREUD
KOSSOFF
ANDREWS
AUERBACH
KITAJ

19.



Willesden Junction, Morning in October, 1971

Leon Kossoff

British, born 1926

Oil on masonite attached to auxiliary wooden framework

91.6 × 183.4 cm (36 1/16 × 72 3/16 in.)

Tate: Lent from a private collection 2006

© Leon Kossoff

Photo © Tate, London 2016

20.



Booking Hall, Kilburn Underground, 1987

Leon Kossoff

British, born 1926

Oil on masonite attached to auxiliary wooden framework

198.2 × 182.7 cm (78 1/16 × 71 15/16 in.)

Tate: Purchased with assistance from the

Friends of the Tate Gallery and the Mail on

Sunday through the Friends of the Tate

Gallery 1989

© Leon Kossoff

Photo © Tate, London 2016

21.



Children's Swimming Pool, Autumn

Afternoon, 1971

Leon Kossoff

British, born 1926

Oil on masonite attached to auxiliary wooden framework

168 × 214 × 5.6 cm (66 1/8 × 84 1/4 × 2 3/16 in.)

Tate: Purchased 1981

© Leon Kossoff

Photo © Tate, London 2016

22.



Man in a Wheelchair, 1959 – 1962

Leon Kossoff

British, born 1926

Oil on masonite attached to auxiliary wooden framework

213.4 × 123.2 cm (84 × 48 1/2 in.)

Tate: Purchased 1963

© Leon Kossoff

Photo © Tate, London 2016

LONDON CALLING

BACON
FREUD
KOSSOFF
ANDREWS
AUERBACH
KITAJ

23.



Two Seated Figures No. 2, 1980

Leon Kossoff

British, born 1926

Oil on masonite attached to auxiliary wooden framework

243.8 × 182.8 cm (96 × 71 15/16 in.)

Tate: Purchased 1983

© Leon Kossoff

Photo © Tate, London 2016

24.



Woman III in Bed, Surrounded by Family, 1965

Leon Kossoff

British, born 1926

Oil on masonite attached to auxiliary wooden framework

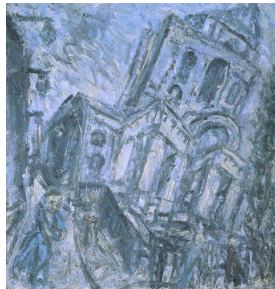
185.4 × 124.5 cm (73 × 49 in.)

Tate: Purchased 1981

© Leon Kossoff

Photo © Tate, London 2016

25.



Christ Church, Spitalfields, Morning, 1990

Leon Kossoff

British, born 1926

Oil on masonite attached to auxiliary wooden framework

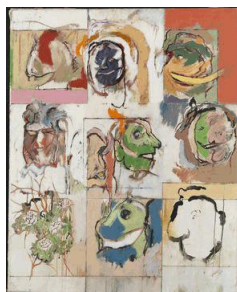
198.6 × 189.2 cm (78 3/16 × 74 1/2 in.)

Tate: Purchased 1994

© Leon Kossoff

Photo © Tate, London 2016

26.



Erasmus Variations, 1958

R. B. Kitaj

American, 1932 - 2007

Oil on canvas

104.9 × 84.2 cm (41 5/16 × 33 1/8 in.)

Tate: Accepted by HM Government in lieu of inheritance tax and allocated to Tate 2007

© R.B. Kitaj Estate, courtesy Marlborough

Fine Art

Photo © Tate, London 2016

LONDON CALLING

BACON
FREUD
KOSSOFF
ANDREWS
AUERBACH
KITAJ

27.



The Wedding, 1989 – 1993

R. B. Kitaj

American, 1932 - 2007

Oil on canvas

182.9 × 182.9 cm (72 × 72 in.)

Tate: Presented by the artist 1993

© R.B. Kitaj Estate, courtesy Marlborough
Fine Art

Photo © Tate, London 2016

28.



My Cities (An Experimental Drama), 1990 – 1993

R. B. Kitaj

American, 1932 - 2007

Oil on canvas

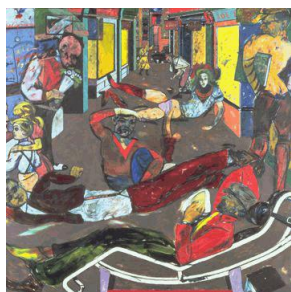
183.2 × 183.2 cm (72 1/8 × 72 1/8 in.)

Tate: Purchased 1997

© R.B. Kitaj Estate, courtesy Marlborough
Fine Art

Photo © Tate, London 2016

29.



Cecil Court, London W. C. 2. (The Refugees), 1983 - 1984

R. B. Kitaj

American, 1932 - 2007

Oil on canvas

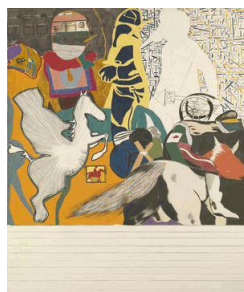
183 × 183 cm (72 1/16 × 72 1/16 in.)

Tate: Purchased 1985

© R.B. Kitaj Estate, courtesy Marlborough
Fine Art

Photo © Tate, London 2016

30.



Isaac Babel Riding with Budyonny, 1962

R. B. Kitaj

American, 1932 - 2007

Oil on canvas

182.9 × 152.4 cm (72 × 60 in.)

Tate: Purchased 1963

© R.B. Kitaj Estate, courtesy Marlborough
Fine Art

Photo © Tate, London 2016

LONDON CALLING

BACON
FREUD
KOSSOFF
ANDREWS
AUERBACH
KITAJ

31.



Two London Painters: Frank Auerbach and Sandra Fisher, 1979

R. B. Kitaj

American, 1932 - 2007

Pastel and watercolor on paper

56.2 × 78.4 cm (22 1/8 × 30 7/8 in.)

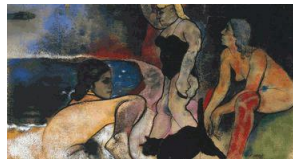
Los Angeles County Museum of Art, Michael and Dorothy Blankfort Bequest

© R.B. Kitaj Estate, courtesy Marlborough Fine Art

Digital Image © 2016 Museum

Associates/LACMA. Licensed by Art Resource, NY

32.



The Rise of Fascism, 1975 - 1979

R. B. Kitaj

American, 1932 - 2007

Oil, charcoal and pastel on paper

85.1 × 158.4 cm (33 1/2 × 62 3/8 in.)

Tate: Purchased 1980

© R.B. Kitaj Estate, courtesy Marlborough Fine Art

Photo © Tate, London 2016

33.



The Murder of Rosa Luxemburg, 1960

R. B. Kitaj

American, 1932 - 2007

Oil, ink, graphite and paper on canvas

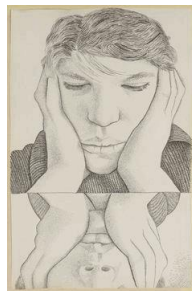
153 × 152.4 cm (60 1/4 × 60 in.)

Tate: Purchased 1980

© R.B. Kitaj Estate, courtesy Marlborough Fine Art

Photo © Tate, London 2016

34.



Narcissus, 1948

Lucian Freud

British, born Germany, 1922 - 2011

Ink on paper

Image: 21 × 13.7 cm (8 1/4 × 5 3/8 in.)

Framed: 36 × 28.9 × 2.9 cm (14 3/16 × 11 3/8 × 1 1/8 in.)

Tate: Bequeathed by Pauline Vogelpoel, Director of the Contemporary Art Society, 2002, accessioned 2004

© Lucian Freud Archive / Bridgeman Copyright Service

Photo © Tate, London 2016



LONDON CALLING

BACON
FREUD
KOSSOFF
ANDREWS
AUERBACH
KITAJ

35.



Girl with a Fig Leaf, 1947

Lucian Freud

British, born Germany, 1922 – 2011

Etching on paper

Image: 29.8 × 23.8 cm (11 3/4 × 9 3/8 in.)

Framed: 55.6 × 47.5 × 2.6 cm (21 7/8 × 18 11/16 × 1 in.)

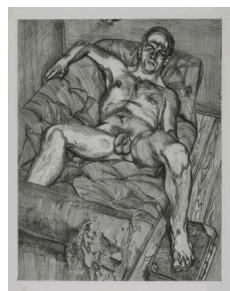
Tate: Purchased 1988

© Lucian Freud Archive / Bridgeman

Copyright Service

Photo © Tate, London 2016

36.



Man Posing, 1985

Lucian Freud

British, born Germany, 1922 – 2011

Etching on paper

Image: 69.5 × 54.3 cm (27 3/8 × 21 3/8 in.)

Framed: 99 × 84 × 4 cm (39 × 33 1/16 × 1 9/16 in.)

Tate: Purchased 1987

© Lucian Freud Archive / Bridgeman

Copyright Service

Photo © Tate, London 2016

37.



Woman Sleeping, 1995

Lucian Freud

British, born Germany, 1922 – 2011

Etching on paper

Image: 73 × 59.4 cm (28 3/4 × 23 3/8 in.)

Framed: 89.8 × 124.5 × 3 cm (35 3/8 × 49 × 1 3/16 in.)

Tate: Presented anonymously 1997

© Lucian Freud Archive / Bridgeman

Copyright Service

Photo © Tate, London 2016

38.



Father Resting, 1977

Leon Kossoff

British, born 1926

Charcoal on paper

76.2 × 54.6 cm (30 × 21 1/2 in.)

Private Collection

© Leon Kossoff

Photo credit: Todd-White Art Photography, London



LONDON CALLING

BACON
FREUD
KOSSOFF
ANDREWS
AUERBACH
KITAJ

39.



Building Site, Oxford Street, 1952

Leon Kossoff

British, born 1926

Crayon, charcoal and gouache on paper

112 × 133.5 cm (44 1/8 × 52 9/16 in.)

Tate: Purchased 1996

© Leon Kossoff

Photo © Tate, London 2016

40.



Two Seated Figures II, 1980

Leon Kossoff

British, born 1926

Charcoal on paper

79.4 × 56.5 cm (31 1/4 × 22 1/4 in.)

Lent from a private collection; promised gift to Tate

© Leon Kossoff

Photo credit: Prudence Cuming Associates Ltd

41.



Boys and Girls I, 1964

R. B. Kitaj

American, 1932 – 2007

Screen print on paper

Image: 52.7 × 41.3 cm (20 3/4 × 16 1/4 in.)

Framed: 87 × 62.5 × 3 cm (34 1/4 × 24 5/8 × 1 3/16 in.)

Tate: Presented by Rose and Chris Prater through the Institute of Contemporary Prints 1975

© R. B. Kitaj Estate, courtesy Marlborough Fine Art

Photo © Tate, London 2016

42a.



Working Drawings for Primrose Hill, 1968

Frank Auerbach

German, born 1931

Chalk and graphite on paper

Each approx. 24.4 × 29.2 cm (9 3/4 × 11 1/2 in.)

Tate: Purchased 1971

© Frank Auerbach, courtesy Marlborough Fine Art

Photo © Tate, London 2016

LONDON CALLING

BACON
FREUD
KOSSOFF
ANDREWS
AUERBACH
KITAJ

b.



c.



d.



e.



43.



Portrait of Leon Kossoff, 1951

Frank Auerbach

German, born 1931

Oil on panel

61.4 × 45.4 cm (24 3/16 × 17 7/8 in.)

Tate: Lent from a private collection 2006

© Frank Auerbach, courtesy Marlborough
Fine Art

Photo © Tate, London 2016



LONDON CALLING

BACON
FREUD
KOSSOFF
ANDREWS
AUERBACH
KITAJ

44.



Self-Portrait, 1958
Frank Auerbach
German, born 1931
Charcoal and paper collage
77.2 × 56.5 cm (30 3/8 × 22 1/4 in.)
Courtesy of the Daniel Katz Gallery, London
© Frank Auerbach, courtesy Marlborough
Fine Art

45.



Self-Portrait II, 2010
Frank Auerbach
German, born 1931
Graphite on paper
76.5 × 57.5 cm (30 1/8 × 22 5/8 in.)
Private Collection
© Frank Auerbach, courtesy Marlborough
Fine Art

46.



Head of E. O. W., 1959 – 1960
Frank Auerbach
German, born 1931
Charcoal, paper and watercolor on paper
78.7 × 58.1 cm (31 × 22 7/8 in.)
Tate: Purchased 1976
© Frank Auerbach, courtesy Marlborough
Fine Art
Photo © Tate, London 2016

47.



Blue Crawling Figure, No. 1, About 1957 – 1961
Francis Bacon
British, born Ireland, 1909 – 1992
Oil on paper
34 × 27 cm (13 3/8 × 10 5/8 in.)
Tate: Purchased with assistance from the National Lottery through the Heritage Lottery Fund, the Art Fund and a group of anonymous donors in memory of Mario Tazzoli 1998
© The Estate of Francis Bacon. All rights reserved. / DACS, London / ARS, NY 2015
Photo © Tate, London 2016



LONDON CALLING

BACON
FREUD
KOSSOFF
ANDREWS
AUERBACH
KITAJ

48.



Figure in a Landscape, About 1952

Francis Bacon

British, born Ireland, 1909 – 1992

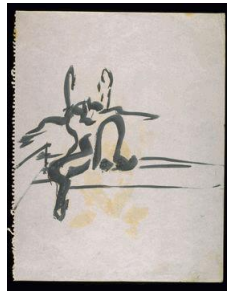
Oil on paper

33.9 × 26.3 cm (13 3/8 × 10 3/8 in.)

Tate: Purchased with assistance from the National Lottery through the Heritage Lottery Fund, the Art Fund and a group of anonymous donors in memory of Mario Tazzoli 1998

© The Estate of Francis Bacon. All rights reserved. / DACS, London / ARS, NY 2016
Photo © Tate, London 2016

49.



Collapsed Figure, About 1957 – 1961

Francis Bacon

British, born Ireland, 1909 – 1992

Oil on paper

34 × 27 cm (13 3/8 × 10 5/8 in.)

Tate: Purchased with assistance from the National Lottery through the Heritage Lottery Fund, the Art Fund and a group of anonymous donors in memory of Mario Tazzoli 1998

© The Estate of Francis Bacon. All rights reserved. / DACS, London / ARS, NY 2015
Photo © Tate, London 2016

50.



Figure with Left Arm Raised, No. 2, About 1957 – 1961

Francis Bacon

British, born Ireland, 1909 – 1992

Oil on paper

34 × 27 cm (13 3/8 × 10 5/8 in.)

Tate: Purchased with assistance from the National Lottery through the Heritage Lottery Fund, the Art Fund and a group of anonymous donors in memory of Mario Tazzoli 1998

© The Estate of Francis Bacon. All rights reserved. / DACS, London / ARS, NY 2015
Photo © Tate, London 2016

LONDON CALLING

BACON
FREUD
KOSSOFF
ANDREWS
AUERBACH
KITAJ

51.



Reclining Figure, No. 1, About 1961
Francis Bacon
British, born Ireland, 1909 – 1992
Oil and ink on paper
23.8 × 15.6 cm (9 3/8 × 6 1/8 in.)
Tate: Purchased with assistance from the National Lottery through the Heritage Lottery Fund, the Art Fund and a group of anonymous donors in memory of Mario Tazzoli 1998
© The Estate of Francis Bacon. All rights reserved. / DACS, London / ARS, NY 2015
Photo © Tate, London 2016

52.



Reclining Woman, 1961
Francis Bacon
British, born Ireland, 1909 – 1992
Oil on canvas
198.8 × 141.6 cm (78 1/4 × 55 3/4 in.)
Tate: Purchased 1961
© The Estate of Francis Bacon. All rights reserved. / DACS, London / ARS, NY 2015
Photo © Tate, London 2016

53.



Portrait of Isabel Rawsthorne, 1966
Francis Bacon
British, born Ireland, 1909 – 1992
Oil on canvas
81.3 × 68.6 cm (32 × 27 in.)
Tate: Purchased 1966
© The Estate of Francis Bacon. All rights reserved. / DACS, London / ARS, NY 2016
Photo © Tate, London 2016

54.



Study for Portrait II (after the Life Mask of William Blake), 1955
Francis Bacon
British, born Ireland, 1909 – 1992
Oil on canvas
61 × 50.8 cm (24 × 20 in.)
Tate: Purchased 1979
© The Estate of Francis Bacon. All rights reserved. / DACS, London / ARS, NY 2015
Photo © Tate, London 2016



LONDON CALLING

BACON
FREUD
KOSSOFF
ANDREWS
AUERBACH
KITAJ

55.



Study for Head of Lucian Freud, 1967
Francis Bacon
British, born Ireland, 1909 – 1992
Oil on canvas
35.6 × 30.5 × 1.5 cm (14 × 12 × 9/16 in.)
Private Collection
© The Estate of Francis Bacon. All rights reserved. / DACS, London / ARS, NY 2016

56.



Portrait of George Dyer Riding a Bicycle, 1966
Francis Bacon
British, born Ireland, 1909 – 1992
Oil on canvas
198 × 147.5 cm (77 15/16 × 58 1/16 in.)
Fondation Beyeler, Riehen/Basel, Beyeler Collection
© The Estate of Francis Bacon. All rights reserved. / DACS, London / ARS, NY 2016
Photo: Peter Schibli, Basel

57.



Figure with Meat, 1954
Francis Bacon
British, born Ireland, 1909 – 1992
Oil on canvas
129.9 × 121.9 cm (51 1/8 × 48 in.)
The Art Institute of Chicago, Harriott A. Fox Fund
© The Estate of Francis Bacon. All rights reserved. / DACS, London / ARS, NY 2016
Photography © The Art Institute of Chicago

58.



Figure in a Landscape, 1945
Francis Bacon
British, born Ireland, 1909 – 1992
Oil on canvas
144.8 × 128.3 cm (57 × 50 1/2 in.)
Tate: Purchased 1950
Photo © Tate, London 2016



LONDON CALLING

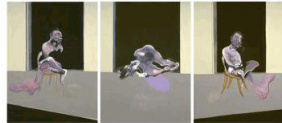
BACON
FREUD
KOSSOFF
ANDREWS
AUERBACH
KITAJ

59.



Figures in a Garden, About 1936
Francis Bacon
British, born Ireland, 1909 – 1992
Oil on canvas
74 × 94 cm (29 1/8 × 37 in.)
Tate: Accepted by HM Government in lieu of inheritance tax and allocated to Tate 2007
Photo © Tate, London 2016

60.



Triptych August 1972, 1972
Francis Bacon
British, born Ireland, 1909 – 1992
Oil and sand on three canvases
Each 198.1 × 147.3 cm (78 × 58 in.)
Tate: Purchased 1980
© The Estate of Francis Bacon. All rights reserved. / DACS, London / ARS, NY 2016
Photo © Tate, London 2016

61.



Boy Smoking, 1950 – 1951
Lucian Freud
British, born Germany, 1922 – 2011
Oil on copper
15.5 × 11.5 × 0.2 cm (6 1/8 × 4 1/2 × 1/16 in.)
Tate: Bequeathed by Simon Sainsbury 2006, accessioned 2008
© Lucian Freud Archive / Bridgeman Copyright Service
Photo © Tate, London 2016

62.



The Painter's Mother IV, 1973
Lucian Freud
British, born Germany, 1922 – 2011
Oil on canvas
27.3 × 18.6 × 1.6 cm (10 3/4 × 7 5/16 × 5/8 in.)
Tate: Bequeathed by Simon Sainsbury 2006, accessioned 2008
© Lucian Freud Archive / Bridgeman Copyright Service
Photo © Tate, London 2016

LONDON CALLING

BACON
FREUD
KOSSOFF
ANDREWS
AUERBACH
KITAJ

63.



Self-Portrait Reflection, 2003 – 2004
Lucian Freud
British, born Germany, 1922 – 2011
Oil on canvas
17.8 × 12.7 cm (7 × 5 in.)
Michael Moritz and Harriet Heyman
© Lucian Freud Archive / Bridgeman
Copyright Service
Image: Bridgeman Images

64.



Girl with a Kitten, 1947
Lucian Freud
British, born Germany, 1922 – 2011
Oil on canvas
41 × 30.7 × 1.8 cm (16 1/8 × 12 1/16 × 11/16 in.)
Tate: Bequeathed by Simon Sainsbury 2006,
accessioned 2008
© Lucian Freud Archive / Bridgeman
Copyright Service
Photo © Tate, London 2016

65.



Man with a Thistle (Self-Portrait), 1946
Lucian Freud
British, born Germany, 1922 – 2011
Oil on canvas
61 × 50.2 cm (24 × 19 3/4 in.)
Tate: Purchased 1961
© Lucian Freud Archive / Bridgeman
Copyright Service
Photo © Tate, London 2016

66.



Girl with a White Dog, 1950 – 1951
Lucian Freud
British, born Germany, 1922 – 2011
Oil on canvas
76.2 × 101.6 cm (30 × 40 in.)
Tate: Purchased 1952
Photo © Tate, London 2016

LONDON CALLING

BACON
FREUD
KOSSOFF
ANDREWS
AUERBACH
KITAJ

67.



Naked Portrait, 1972 – 1973

Lucian Freud

British, born Germany, 1922 – 2011

Oil on canvas

61 × 61 cm (24 × 24 in.)

Tate: Purchased 1975

© Lucian Freud Archive / Bridgeman

Copyright Service

Photo © Tate, London 2016

68.



Girl in a Striped Nightshirt, 1983 – 1985

Lucian Freud

British, born Germany, 1922 – 2011

Oil on canvas

29.5 × 25 cm (11 5/8 × 9 13/16 in.)

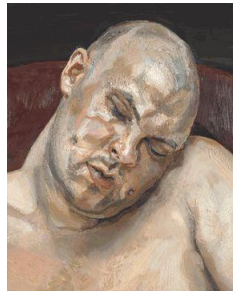
Tate: Presented by Mercedes and Ian Stoutzker 2013 and forming part of the Mercedes and Ian Stoutzker Gift to Tate

© Lucian Freud Archive / Bridgeman

Copyright Service

Photo © Tate, London 2016

69.



Leigh Bowery, 1991

Lucian Freud

British, born Germany, 1922 – 2011

Oil on canvas

51 × 40.9 cm (20 1/16 × 16 1/8 in.)

Tate: Presented anonymously 1994

© Lucian Freud Archive / Bridgeman

Copyright Service

Photo © Tate, London 2016

70.



Leigh under the Skylight, 1994

Lucian Freud

British, born Germany, 1922 – 2011

Oil on canvas

270.5 × 119.4 cm (106 1/2 × 47 in.)

Private Collection

© Lucian Freud Archive / Bridgeman

Copyright Service

Image: Bridgeman Images

LONDON CALLING

BACON
FREUD
KOSSOFF
ANDREWS
AUERBACH
KITAJ

71.



Naked Portrait, 2001

Lucian Freud

British, born Germany, 1922 – 2011

Oil on canvas

167.6 × 132.1 cm (66 × 52 in.)

Michael Moritz and Harriet Heyman

© Lucian Freud Archive / Bridgeman
Copyright Service

72.



Two Plants, 1977 – 1980

Lucian Freud

British, born Germany, 1922 – 2011

Oil on canvas

149.9 × 120 cm (59 × 47 1/4 in.)

Tate: Purchased 1980

© Lucian Freud Archive / Bridgeman
Copyright Service

Photo © Tate, London 2016

73.



David and Eli, 2003 – 4

Lucian Freud

British, born Germany, 1922 – 2011

Oil on canvas

162.6 × 174 cm (64 × 68 1/2 in.)

Lent from a Private Collection 2016

© Lucian Freud Archive / Bridgeman
Copyright Service

74.



Bruce Bernard (Seated), 1996

Lucian Freud

British, born Germany, 1922 – 2011

Oil on canvas

101.6 × 81.3 cm (40 × 32 in.)

Michael Moritz and Harriet Heyman

© Lucian Freud Archive / Bridgeman
Copyright Service