

Power, Justice, and Tyranny in the Middle Ages

May 25 to August 15, 2021

The J. Paul Getty Museum at the Getty Center



1. Unknown English
The Dragon Fighting the Just, about 1255-60
from Getty Apocalypse
Tempera colors, gold leaf, colored washes, pen and ink on parchment
Leaf: 31.9 × 22.5 cm (12 9/16 × 8 7/8 in.)
The J. Paul Getty Museum, Los Angeles
Ms. Ludwig III 1, fol. 22v (83.MC.72.22v)



2. Unknown English
The Beast from the Sea, about 1255-60
from Getty Apocalypse
Tempera colors, gold leaf, colored washes, pen and ink on parchment
Leaf: 31.9 × 22.5 cm (12 9/16 × 8 7/8 in.)
The J. Paul Getty Museum, Los Angeles
Ms. Ludwig III 1, fol. 23 (83.MC.72.23)



3. Willem Vrelant
Flemish, died 1481, active 1454 - 1481
The Martyrdom of Saint Thomas Becket, early 1460s
from Book of hours
Tempera colors, gold leaf, and ink on parchment
Leaf: 25.6 × 17.3 cm (10 1/16 × 6 13/16 in.)
The J. Paul Getty Museum, Los Angeles
Ms. Ludwig IX 8, fol. 48 (83.ML.104.48)



4. Unknown Italian
Saint Leonard Liberating a Child from Prison, about 1460
from Book of hours
Tempera colors, gold, and ink on parchment
Leaf: 17.1 × 12.1 cm (6 3/4 × 4 3/4 in.)
The J. Paul Getty Museum, Los Angeles
Ms. Ludwig IX 12, fol. 332v (83.ML.108.332v)



5. Simon Bening
Flemish, about 1483 - 1561
Christ Led from Herod to Pilate, about 1525-30
from Prayer Book of Cardinal Albrecht of Brandenburg
Tempera colors, gold paint, and gold leaf on parchment
Leaf: 16.8 × 11.4 cm (6 5/8 × 4 1/2 in.)
The J. Paul Getty Museum, Los Angeles
Ms. Ludwig IX 19, fol. 147v (83.ML.115.147v)



6. Unknown Silesian
Saint Hedwig Feeding the Imprisoned and Caring for Pilgrims; Saint Hedwig Feeding the Poor and the Infirm, 1353
from The Life of Saint Hedwig
Tempera colors, colored washes, and ink on parchment
Leaf: 34.1 × 24.8 cm (13 7/16 × 9 3/4 in.)
The J. Paul Getty Museum, Los Angeles
Ms. Ludwig XI 7, fol. 59 (83.MN.126.59)



7. Master of the Oxford Hours
French, active about 1440s
The Torments of Hell, about 1440-50
from City of God
Tempera colors, gold and silver paint on parchment
Leaf: 36.2 × 27.3 cm (14 1/4 × 10 3/4 in.)
The J. Paul Getty Museum, Los Angeles
Ms. Ludwig XI 10, fol. 217 (83.MN.129.217)



8. Unknown Flemish
A Young Nobleman Leaving a Young Woman in the Care of an Abbess, about 1475
from Mirror of History
Tempera colors, gold leaf, and gold paint on parchment
Leaf: 43.8 × 30.5 cm (17 1/4 × 12 in.)
The J. Paul Getty Museum, Los Angeles
Ms. Ludwig XIII 5, v2, fol. 212v (83.MP.148.2.212v)



9. Loyset Liédet
Flemish, active about 1448 - 1478
The Coronation of Pepin, 1467-72
Cutting from History of Charles Martel
Tempera colors, gold leaf, and gold paint on parchment
Leaf: 22.9 × 18.9 cm (9 × 7 7/16 in.)
The J. Paul Getty Museum, Los Angeles
Ms. Ludwig XIII 6, leaf 7v (83.MP.149.7.verso)



10. Master of the Getty Froissart
Flemish, active about 1475 - 1485
Pope Urban VI and the Anti-Pope Clement VII, about 1480-83
from Chronicles
Tempera colors, gold leaf, gold paint, and ink on parchment
Leaf: 48 × 35 cm (18 7/8 × 13 3/4 in.)
The J. Paul Getty Museum, Los Angeles
Ms. Ludwig XIII 7, fol. 87 (83.MP.150.87)



11. Unknown French
Initial I: Scenes of Secular and Ecclesiastical Justice,
about 1170-80
from Decretals
Tempera colors, gold leaf, and ink on parchment
Leaf: 44.3 × 29.1 cm (17 7/16 × 11 7/16 in.)
The J. Paul Getty Museum, Los Angeles
Ms. Ludwig XIV 2, fol. 1 (83.MQ.163.1)



12. Unknown Spanish
Initial Q: A Woman with Bread Loaves before a Man Holding a Scale; Initial S: The Baptism of a Moor, about 1290-1310
from Feudal Customs of Aragon
Tempera colors, gold leaf, and ink on parchment
Leaf: 36.5 × 24 cm (14 3/8 × 9 7/16 in.)
The J. Paul Getty Museum, Los Angeles
Ms. Ludwig XIV 6, fol. 242v (83.MQ.165.242v)



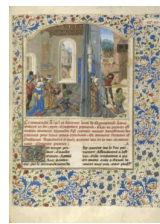
13. Unknown French
Two Men Standing before a Bench of Money, Plates, and Goblets, about 1430
from Book of Good Manners
Tempera colors, gold leaf, gold paint, and pen and ink on parchment
Leaf: 24.8 × 17.9 cm (9 3/4 × 7 1/16 in.)
The J. Paul Getty Museum, Los Angeles
Ms. Ludwig XIV 9, fol. 54 (83.MQ.170.54)



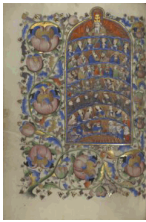
14. Unknown French
The Goddess of Fortune, about 1405
from Romance of the Rose
Tempera colors, gold leaf, and ink on parchment bound between pasteboard covered with dark red morocco
Leaf: 36.7 × 26 cm (14 7/16 × 10 1/4 in.)
The J. Paul Getty Museum, Los Angeles
Ms. Ludwig XV 7, fol. 38v (83.MR.177.38v)



15. Unknown French
The Wheel of Fortune, about 1405
from Romance of the Rose
Tempera colors, gold leaf, and ink on parchment bound between pasteboard covered with dark red morocco
Leaf: 36.7 × 26 cm (14 7/16 × 10 1/4 in.)
The J. Paul Getty Museum, Los Angeles
Ms. Ludwig XV 7, fol. 39 (83.MR.177.39)



16. Master of the Jardin de vertueuse consolation
Flemish, active 3rd quarter of 15th century
Orsines Presenting a Gift to Alexander and the Execution of Orsines, about 1470-75
from Book of the Deeds of Alexander the Great
Tempera colors, gold leaf, gold paint, and ink on parchment
Leaf: 43.2 × 33 cm (17 × 13 in.)
The J. Paul Getty Museum, Los Angeles
Ms. Ludwig XV 8, fol. 226 (83.MR.178.226)



17. Master of Guillebert de Mets
 Flemish, active about 1410 - 1450
All Saints, about 1450-55
 from Book of hours
 Tempera colors, gold leaf, and ink on parchment
 Leaf: 19.4 × 14 cm (7 5/8 × 5 1/2 in.)
 The J. Paul Getty Museum, Los Angeles
 Ms. 2, fol. 20v (84.ML.67.20v)



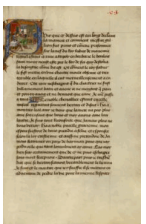
18. Unknown French
A Massacre of Family Members, about 1460-70
 from Letter to Johann von Eich
 Tempera colors, gold leaf, gold paint, and ink on parchment
 Leaf: 17.6 × 11.4 cm (6 15/16 × 4 1/2 in.)
 The J. Paul Getty Museum, Los Angeles
 Ms. 68, fol. 21 (2001.45.21)



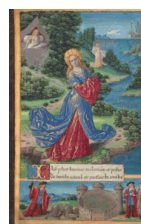
19. Unknown English
The Fourteenth Sign of the Day of Judgment, about 1480-90
 from Life of Christ
 Tempera colors and gold leaf on parchment
 Leaf: 11.9 × 17 cm (4 11/16 × 6 11/16 in.)
 The J. Paul Getty Museum, Los Angeles
 Ms. 101, fol. 104v (2008.3.104v)



20. Unknown English
The Fifteenth and Final Sign before the Day of Judgment, about 1480-90
 from Life of Christ
 Tempera colors and gold leaf on parchment
 Leaf: 11.9 × 17 cm (4 11/16 × 6 11/16 in.)
 The J. Paul Getty Museum, Los Angeles
 Ms. 101, fol. 105 (2008.3.105)



21. Lieven van Lathem
 Flemish, about 1430 - 1493
Initial P: Gillion's Companion Hertan in Disguise, 1464
 from Romance of Gillion de Trazegnies
 Tempera colors, gold, and ink on parchment
 Leaf: 37 × 25.5 cm (14 9/16 × 10 1/16 in.)
 The J. Paul Getty Museum, Los Angeles
 Ms. 111, fol. 95 (2013.46.95)



22. Master of the Chronique scandaleuse
 French, active about 1493 - 1510
Ariadne Discovers Theseus's Departure, about 1493
 from Ovid, Excerpts from Heroides
 Tempera colors, gold, and ink on parchment
 The J. Paul Getty Museum, Los Angeles
 Ms. 121, fol. 13 (2021.7.13)