

Grand Design: 17th-Century French Drawings

February 8 to May 1, 2022

The J. Paul Getty Museum at the Getty Center



1. Claude Lorrain (Claude Gellée)
French, 1604/1605? - 1682
Figures in a Landscape before a Harbor, Late 1630s
Pen and brown ink and brush and reddish-brown wash, with white gouache heightening, on blue paper
23.8 × 33.8 cm (9 3/8 × 13 5/16 in.)
The J. Paul Getty Museum, Los Angeles
82.GA.80



2. Nicolas Poussin
French, 1594 - 1665
Apollo and the Muses on Mount Parnassus, About 1626-28
Pen and brown ink and brush and brown wash over traces of black chalk on paper; small, irregular section added at right margin
17.6 × 24.6 cm (6 15/16 × 9 11/16 in.)
The J. Paul Getty Museum, Los Angeles
83.GG.345



3. Claude Lorrain (Claude Gellée)
French, 1604/1605? - 1682
View of Tivoli, About 1640
Black chalk with brush and brown and reddish-brown wash on paper
21.3 × 31 cm (8 3/8 × 12 3/16 in.)
The J. Paul Getty Museum, Los Angeles
83.GB.357 (recto)



4. Jacques Callot
French, 1592 - 1635
An Army Leaving a Castle, About 1632
Brush and brown wash over black chalk on paper
10.2 × 21.7 cm (4 × 8 9/16 in.)
The J. Paul Getty Museum, Los Angeles
85.GG.294



5. Jacques Callot
French, 1592 - 1635
A View of Mountains across a Lake, About 1632
Brush and brown wash over black chalk on paper
10 × 22.1 cm (3 15/16 × 8 11/16 in.)
The J. Paul Getty Museum, Los Angeles
85.GG.295



6. Attributed to Nicolas Poussin
French, 1594 - 1665
The Crossing of the Red Sea, About 1626-28
Red chalk on paper
15.6 × 22.5 cm (6 1/8 × 8 7/8 in.)
The J. Paul Getty Museum, Los Angeles
86.GB.466



7. Nicolas Poussin
French, 1594 - 1665
Studies of Antiquities, About 1632-35
Pen and brown ink and brush and brown wash over black chalk on paper
26.8 × 19.7 cm (10 9/16 × 7 3/4 in.)
The J. Paul Getty Museum, Los Angeles
86.GA.467 (recto)



8. Attributed to Charles Mellin
French, 1597 ? - 1649
Two Young Women with Putti, About 1630s
Pen and brown ink and brush and brown wash over traces of black chalk on paper
17.3 × 12.4 cm (6 13/16 × 4 7/8 in.)
The J. Paul Getty Museum, Los Angeles
86.GG.468



9. Nicolas Poussin
French, 1594 - 1665
Study for The Birth of Venus (also known as The Triumph of Neptune and Amphitrite), About 1634
Pen and brown ink on paper
14.6 × 20.6 cm (5 3/4 × 8 1/8 in.)
The J. Paul Getty Museum, Los Angeles
86.GA.470



10. Nicolas Poussin
French, 1594 - 1665
Two Studies of an Ancient Statue, About 1632-35
Pen and brown ink, with later red chalk framing lines, on paper
16.2 × 12.5 cm (6 3/8 × 4 15/16 in.)
The J. Paul Getty Museum, Los Angeles
86.GA.471



11. Hyacinthe Rigaud
French, 1659 - 1743
Portrait of a Man, About 1712
Black chalk, brush with gray wash, with white and gray gouache heightening, on blue paper
35.6 × 27.9 cm (14 × 11 in.)
The J. Paul Getty Museum, Los Angeles
86.GB.612



12. Claude Simpol
French, 1666 - 1716
September: Picking Fruit, About 1700
Brush and gray wash and black chalk, incised for transfer, on paper
24.3 × 32.4 cm (9 9/16 × 12 3/4 in.)
The J. Paul Getty Museum, Los Angeles
86.GG.619



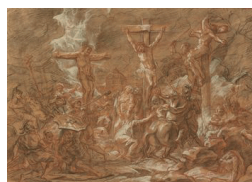
13. Michel II Corneille (Corneille le Jeune)
French, 1641 - 1708
Studies of the Virgin and Child and of Heads (recto); Virgin and Child with St. John (verso), About 1670-90
Red, black, and white chalk on blue paper (recto); Pen and brown ink and brush and brown wash over black chalk on blue paper (verso)
31 × 27.3 cm (12 3/16 × 10 3/4 in.)
The J. Paul Getty Museum, Los Angeles
87.GG.1



14. Simon Vouet
French, 1590 - 1649
Study for the Figures of Venus and Cupid, About 1630-35
Black chalk with traces of white chalk on light-brown paper
38.7 × 21.7 cm (15 1/4 × 8 9/16 in.)
The J. Paul Getty Museum, Los Angeles
87.GB.104



15. Sébastien Bourdon
French, 1616 - 1671
The Israelites Dancing around the Golden Calf, About 1645
Pen and brown ink and brown and white oil paint on light-brown paper
47.6 × 64.9 cm (18 3/4 × 25 9/16 in.)
The J. Paul Getty Museum, Los Angeles
88.GG.39



16. Antoine Coypel
French, 1661 - 1722
The Crucifixion, 1692
Red and black chalk with white gouache heightening on beige paper
40.5 × 58.1 cm (15 15/16 × 22 7/8 in.)
The J. Paul Getty Museum, Los Angeles
88.GB.41



17. Attributed to Georges Lallemant
French, about 1580 - 1636
Reclining Old Man, About 1625
Brush and black ink and gray wash, heightened with white gouache on paper
26.5 × 19.1 cm (10 7/16 × 7 1/2 in.)
The J. Paul Getty Museum, Los Angeles
90.GG.136



18. Claude Lorrain (Claude Gellée)
French, 1604/1605? - 1682
Landscape in Latium with Farm Laborers, About 1660-63
Pen and brown ink, brush and brown wash, and black chalk on paper
22.4 × 36.2 cm (8 13/16 × 14 1/4 in.)
The J. Paul Getty Museum, Los Angeles
91.GG.70



19. Laurent de La Hyre
French, 1606 - 1656
The Liberation of Saint Peter, About 1647
Black chalk and brush and brown wash on paper
23.8 × 19.7 cm (9 3/8 × 7 3/4 in.)
The J. Paul Getty Museum, Los Angeles
92.GB.27



20. Jacques Callot
French, 1592 - 1635
Study of a Rearing Horse, About 1616
Quill and reed pens and brown ink on paper
32.4 × 18.4 cm (12 3/4 × 7 1/4 in.)
The J. Paul Getty Museum, Los Angeles
92.GA.35



21. Charles Le Brun
French, 1619 - 1690
Portrait of M. Quatrehomme du Lys, 1657
Black, white, and red chalk and pastel on beige paper
35.2 × 27.6 cm (13 7/8 × 10 7/8 in.)
The J. Paul Getty Museum, Los Angeles
92.GB.107



22. Claude Lorrain (Claude Gellée)
French, 1604/1605? - 1682
Apollo and the Muses, 1674
Pen and brown ink and brush and brown wash, with white gouache heightening, over black chalk on two sheets of paper
21.3 × 58.1 cm (8 3/8 × 22 7/8 in.)
The J. Paul Getty Museum, Los Angeles
95.GA.66



23. Nicolas Poussin
French, 1594 - 1665
A Path Leading into a Forest Clearing, About 1635-40
Pen and brown ink and brush and brown wash over graphite on paper
38.6 × 24.6 cm (15 3/16 × 9 11/16 in.)
The J. Paul Getty Museum, Los Angeles
96.GA.24



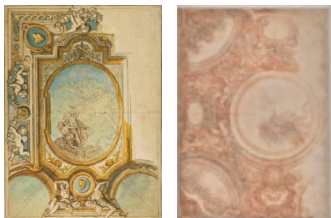
24. Simon Vouet
French, 1590 - 1649
Portrait of Armand Jean du Plessis, Cardinal de Richelieu, About 1632-34
Black, white, and red chalk with pink fabricated chalk, on beige paper
27.3 × 21.1 cm (10 3/4 × 8 5/16 in.)
The J. Paul Getty Museum, Los Angeles
97.GB.68



25. Robert Nanteuil
French, 1623 - 1678
Portrait of Monseigneur Louis Doni d'Attichy, Bishop of Riez and Later of Autun, 1663
Pastel on brown paper
34.3 × 27.9 cm (13 1/2 × 11 in.)
The J. Paul Getty Museum, Los Angeles
98.GG.13



26. Nicolas Mignard (Mignard d'Avignon)
French, 1606 - 1668
Midas, King of Phrygia, About 1655
Black chalk with traces of white chalk, squared in black chalk, on beige paper
42.4 × 26 cm (16 11/16 × 10 1/4 in.)
The J. Paul Getty Museum, Los Angeles
99.GB.26



27. Charles de La Fosse
French, 1636 - 1716
Studies for a Ceiling Decoration with the Apotheosis of Psyche (recto); Studies for a Ceiling Decoration with the Apotheosis of Psyche (verso), About 1680
Pen and black ink and brush and watercolor over red chalk on paper (recto); black and red chalk on paper (verso)
26 × 36.2 cm (10 1/4 × 14 1/4 in.)
The J. Paul Getty Museum, Los Angeles
2001.47



28. Eustache Le Sueur
French, 1616 - 1655
Study for the Figure of Astasius, About 1652
Black chalk with traces of white chalk on beige paper
39.1 × 25.9 cm (15 3/8 × 10 3/16 in.)
The J. Paul Getty Museum, Los Angeles
2001.49



29. Pierre Puget
French, 1620 - 1694
A Ship in a Port near a Ruined Obelisk, About 1675-80
Pen and black ink over black chalk on vellum
25.2 × 35.2 cm (9 15/16 × 13 7/8 in.)
The J. Paul Getty Museum, Los Angeles
2002.1



30. Philippe de Champaigne
French, 1602 - 1674
Portrait of Dame Étienne, 1647
Brush and gray wash on paper
22.5 × 16.8 cm (8 7/8 × 6 5/8 in.)
The J. Paul Getty Museum, Los Angeles, Purchased in part with funds provided by the Disegno Group
2013.4



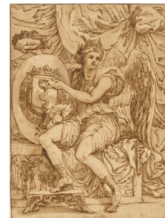
31. Charles Le Brun
French, 1619 - 1690
Dawn, About 1635-42
Black chalk, incised for transfer, on light-brown paper
17 × 22.1 cm (6 11/16 × 8 11/16 in.)
The J. Paul Getty Museum, Los Angeles, Purchased in part with funds provided by the Disegno Group and an anonymous donation in memory of Melvin R. Seiden
2015.28.1



32. Charles Le Brun
French, 1619 - 1690
Night, About 1635-42
Black chalk, incised for transfer, on light-brown paper
18.8 × 23.4 cm (7 3/8 × 9 3/16 in.)
The J. Paul Getty Museum, Los Angeles, Purchased in part with funds provided by the Disegno Group and an anonymous donation in memory of Melvin R. Seiden
2015.28.2



33. Circle of Michel I Corneille (Corneille l'Ainé)
French, active about 1650s–1660s
Study for a Ceiling Decoration, About 1660s
Red chalk on paper
41 × 27 cm (16 1/8 × 10 5/8 in.)
The J. Paul Getty Museum, Los Angeles, Purchased with funds provided by the Disegno Group
2017.67



34. Charles Errard
French, 1606 - 1689
Allegory in Honor of Jean-Baptiste Colbert, About 1672
Pen and brown ink and brush and brown wash over black chalk, incised for transfer, on paper
17.4 × 13 cm (6 7/8 × 5 1/8 in.)
The J. Paul Getty Museum, Los Angeles, Gift of Daniel Thierry
2018.61



35. Antoine Coypel
French, 1661 - 1722
Study of a Nude Man Posed as Bacchus, About 1685
Black chalk with white heightening on light-brown paper
55 × 40 cm (21 5/8 × 15 3/4 in.)
The J. Paul Getty Museum, Los Angeles, Gift of Daniel Thierry
2018.62



36. Claude Mellan
French, 1598 - 1688
Portrait of Nicolas-Claude Fabri de Peiresc, 1636
Black chalk on paper
14.5 × 11 cm (5 11/16 × 4 5/16 in.)
The J. Paul Getty Museum, Los Angeles
2019.11



37. Grégoire Huret
French, 1606 - 1670
Design for a Frontispiece, About 1632
Red chalk and brush and red wash, incised for transfer, on paper
31.7 × 21.2 cm (12 1/2 × 8 3/8 in.)
The J. Paul Getty Museum, Los Angeles, Purchased with funds provided by the Disegno Group
2020.23



38. Charles de La Fosse
French, 1636 - 1716
An Angel, Seen from Behind, Carrying the Cross, About 1700-1702
Red, black, and white chalk on beige paper
Unframed: 16.7 × 9.3 cm (6 9/16 × 3 11/16 in.)
The J. Paul Getty Museum, Los Angeles, Gift of Cecille Pulitzer
2020.55



39. Nicolas de Plattemontagne
French, 1631 - 1706
Seated Virgin with the Christ Child on Her Knee, and Related Studies, About 1670s
Black chalk with white heightening and touches of red chalk on beige paper
39 × 26.5 cm (15 3/8 × 10 7/16 in.)
The J. Paul Getty Museum, Los Angeles, Gift of Daniel Thierry
2020.122