

Traversing the Globe through Illuminated Manuscripts

April 12 to June 26, 2016

The J. Paul Getty Museum at the Getty Center



1. Unknown (Maya)
Vase with Seated Scribes, 600 - 900
Ceramic
Object: 10.2 x 13.5 x 10.2 cm (4 x 5 5/16 x 4 in.)
Los Angeles County Museum of Art, Anonymous gift
Image: www.lacma.org
EX.2016.2.26



2. Unknown
[Carpet Page](#), 9th century
Bifolium from a Fragmentary Koran (fols. 3 and 10)
Pen and ink, gold paint, and tempera colors on parchment
Leaf: 14.4 x 20.8 cm (5 11/16 x 8 3/16 in.)
The J. Paul Getty Museum, Los Angeles
Ms. Ludwig X 1, fol. 10 (83.MM.118.2.10.recto)



3. Unknown
[Decorated Text Page](#), 10th century
Leaf from Life of Apa Samuel
Tempera colors and ink on parchment
Leaf: 34.9 x 25.4 cm (13 3/4 x 10 in.)
The J. Paul Getty Museum, Los Angeles
Ms. 12, recto (85.MS.119.recto)



4. Unknown
[Scenes from the Buddha's Life; Buddhas with a Bodhisattva](#), 1075 - 1100
Opaque watercolor on wood
Unframed: 5.4 x 119.4 cm (2 1/8 x 47 in.)
Los Angeles County Museum of Art, From the Nasli and Alice Heeramanek Collection, Museum Associates Purchase
Image: www.lacma.org
EX.2016.2.25.2



5. Unknown
[Saint John](#), about 1120 - 1140
from Gospel Book
Tempera colors, gold, and silver on parchment
Leaf: 22.9 x 16.5 cm (9 x 6 1/2 in.)
The J. Paul Getty Museum, Los Angeles
Ms. Ludwig II 3, fol. 127v (83.MB.67.127v)



6. Unknown
[Decorated Incipit Page](#), about 1120 - 1140
from Gospel Book
Tempera colors, gold, and silver on parchment
Leaf: 22.9 x 16.5 cm (9 x 6 1/2 in.)
The J. Paul Getty Museum, Los Angeles
Ms. Ludwig II 3, fol. 128 (83.MB.67.128)

January 11, 2016

Additional information about some of these works of art can be found by searching [getty.edu](http://www.getty.edu/art/collection/) at <http://www.getty.edu/art/collection/>



7. Unknown
Christ Before Herod, about 1190 - 1200 and text about 1480 - 1490
 from Life of Christ with added devotional texts and illuminations
 from Illustrated Vita Christi, with devotional supplements
 Tempera colors and gold leaf on parchment
 Leaf: 11.9 x 17 cm (4 11/16 x 6 11/16 in.)
 The J. Paul Getty Museum, Los Angeles
 Ms. 101, fol. 67v (2008.3.67v)



8. Unknown
The Flagellation, about 1190 - 1200 and text about 1480 - 1490
 from Life of Christ with added devotional texts and illuminations
 from Illustrated Vita Christi, with devotional supplements
 Tempera colors and gold leaf on parchment
 Leaf: 11.9 x 17 cm (4 11/16 x 6 11/16 in.)
 The J. Paul Getty Museum, Los Angeles
 Ms. 101, fol. 68 (2008.3.68)



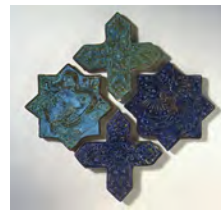
9. Unknown
Scenes from the Life of Absalom, about 1250
 Leaf from the Morgan Picture Bible
 Tempera colors and gold leaf on parchment
 Leaf (trimmed on all sides): 32.5 x 29 cm (12 13/16 x 11 7/16 in.)
 The J. Paul Getty Museum, Los Angeles
 Ms. Ludwig I 6, verso (83.MA.55.verso)



10. T'oros Roslin
 Armenian, active 1256 - 1268
Canon Table Page, 1256
 Tempera and gold paint on parchment Leaf: 26.5 x 19 cm (10 7/16 x 7 1/2 in.)
 The J. Paul Getty Museum, Los Angeles, Gift of the Catholicosate of the Great House of Cilicia
 Ms. 59, fol. 1v (94.MB.71.1.1.verso)



11. T'oros Roslin
 Armenian, active 1256 - 1268
Canon Table Page, 1256
 Tempera and gold paint on parchment Leaf: 26.5 x 19 cm (10 7/16 x 7 1/2 in.)
 The J. Paul Getty Museum, Los Angeles, Gift of the Catholicosate of the Great House of Cilicia
 Ms. 59, fol. 8 (94.MB.71.1.8.recto)



12. Unknown
Star Tile, about 1270 - 1280
 Overglaze painted with colors and gold (lajvardina)
 Object: H: 24.8 cm (9 3/4 in.)
 Los Angeles County Museum of Art, Shinji Shumeikai Acquisition Fund
 Image: www.lacma.org
 EX.2016.2.8.1



13. Unknown

[Cross Tile](#), about 1270 - 1280

Overglaze painted with colors and gold (lajvardina)

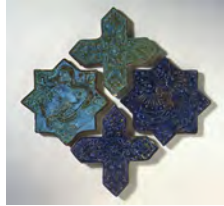
Object: H: 24.8 cm (9 3/4 in.)

Los Angeles County Museum of Art, Shinji Shumeikai

Acquisition Fund

Image: www.lacma.org

EX.2016.2.8.2



15. Unknown

[Cross Tile](#), about 1270 - 1280

Overglaze painted with colors and gold (lajvardina)

Object: H: 24.8 cm (9 3/4 in.)

Los Angeles County Museum of Art, Shinji Shumeikai

Acquisition Fund

Image: www.lacma.org

EX.2016.2.8.4



17. Unknown

[A Hairy Woman of the Island of Gorgade; A Scorpion](#), after 1277

from Bestiary

Tempera colors, pen and ink, gold leaf, and gold paint on parchment

Leaf: 23.3 x 16.4 cm (9 3/16 x 6 7/16 in.)

The J. Paul Getty Museum, Los Angeles

Ms. Ludwig XV 4, fol. 119v (83.MR.174.119v)



14. Unknown

[Star Tile](#), about 1270 - 1280

Overglaze painted with colors and gold (lajvardina)

Object: H: 24.8 cm (9 3/4 in.)

Los Angeles County Museum of Art, Shinji Shumeikai

Acquisition Fund

Image: www.lacma.org

EX.2016.2.8.3



16. Unknown

[The Transfiguration](#), early 13th century - late 13th century

from Gospel Book

Tempera colors and gold leaf on parchment

Leaf: 20.6 x 14.9 cm (8 1/8 x 5 7/8 in.)

The J. Paul Getty Museum, Los Angeles

Ms. Ludwig II 5, fol. 45v (83.MB.69.45v)



18. Unknown

[Men with Shields and Weapons](#), after 1277

from Bestiary

Tempera colors, pen and ink, gold leaf, and gold paint on parchment

Leaf: 23.3 x 16.4 cm (9 3/16 x 6 7/16 in.)

The J. Paul Getty Museum, Los Angeles

Ms. Ludwig XV 4, fol. 120 (83.MR.174.120)



19. Unknown
Initial A: Two Jews in Conversation, about 1290 - 1310
 from Feudal Customs of Aragon
 Tempera colors, gold leaf, and ink on parchment
 Leaf: 36.5 x 24 cm (14 3/8 x 9 7/16 in.)
 The J. Paul Getty Museum, Los Angeles
 Ms. Ludwig XIV 6, fol. 243v (83.MQ.165.243v)



20. Unknown
Initial Q: Two Soldiers Leading Two Moors Before a King, about 1290 - 1310
 from Feudal Customs of Aragon
 Tempera colors, gold leaf, and ink on parchment
 Leaf: 36.5 x 24 cm (14 3/8 x 9 7/16 in.)
 The J. Paul Getty Museum, Los Angeles
 Ms. Ludwig XIV 6, fol. 244 (83.MQ.165.244)

21. T'oros of Taron
 The Mocking of Christ, 1303 - 1377
 from Gladzor Gospels
 Leaf: 23.5 x 17.8 cm (9 1/4 x 7 in.)
 Charles E. Young Research Library. UCLA Library Special Collections
 L.99.MB.52.p. 172



23. Unknown
 Henricus de Carreto
 Ezekiel's Visions, about 1320 - 1321
 Tempera colors and gold on parchment
 Leaf: 36.7 x 25.4 cm (14 7/16 x 10 in.)
 Robert McCarthy
 L.2014.76

22. T'oros of Taron
 Christ Ascending the Cross, 1303 - 1377
 from Gladzor Gospels
 Leaf: 23.5 x 17.8 cm (9 1/4 x 7 in.)
 Charles E. Young Research Library. UCLA Library Special Collections
 L.99.MB.52.p. 283



24. Unknown
 Henricus de Carreto
 Ezekiel's Visions, about 1320 - 1321
 Tempera colors and gold on parchment
 Leaf: 36.7 x 25.4 cm (14 7/16 x 10 in.)
 Robert McCarthy
 L.2014.77



25. Unknown
Henricus de Carreto
Ezekiel's Visions, about 1320 - 1321
Tempera colors and gold on parchment
Leaf: 36.4 x 27 cm (14 5/16 x 10 5/8 in.)
Robert McCarthy
L.2014.78



26. Unknown
Henricus de Carreto
Ezekiel's Visions, about 1320 - 1321
Tempera colors and gold on parchment
Leaf: 36.9 x 26.6 cm (14 1/2 x 10 1/2 in.)
Robert McCarthy
L.2014.79



27. Unknown
Henricus de Carreto
Ezekiel's Visions, about 1320 - 1321
Tempera colors and gold on parchment
Leaf: 31.4 x 26.5 cm (12 3/8 x 10 7/16 in.)
Robert McCarthy
L.2014.80



28. Unknown
[The Battle of Liegnitz, 1353](#)
from *The Life of the Blessed Hedwig*
Tempera colors, colored washes, and ink on parchment
Leaf: 34.1 x 24.8 cm (13 7/16 x 9 3/4 in.)
The J. Paul Getty Museum, Los Angeles
Ms. Ludwig XI 7, fol. 11v (83.MN.126.11v)



29. Unknown
[The Tartars Carrying the Head of Heinrich before Castle Liegnitz; Saint Hedwig Seeing in a Dream Her Son's Soul Carried to Heaven, 1353](#)
from *The Life of the Blessed Hedwig*
Tempera colors, colored washes, and ink on parchment
Leaf: 34.1 x 24.8 cm (13 7/16 x 9 3/4 in.)
The J. Paul Getty Museum, Los Angeles
Ms. Ludwig XI 7, fol. 12 (83.MN.126.12)



30. Unknown
[Saint John, 1386](#)
from *Gospel Book*
Black ink and watercolors on paper bound between wood boards covered with dark brown kidskin
Leaf: 24 x 16.5 cm (9 7/16 x 6 1/2 in.)
The J. Paul Getty Museum, Los Angeles
Ms. Ludwig II 6, fol. 197v (83.MB.70.197v)



31. Unknown
Decorated Incipit Page, 1386
 from Gospel Book
 Black ink and watercolors on paper bound between wood boards covered with dark brown kidskin
 Leaf: 24 x 16.5 cm (9 7/16 x 6 1/2 in.)
 The J. Paul Getty Museum, Los Angeles
 Ms. Ludwig II 6, fol. 198 (83.MB.70.198)



32. Unknown
The King of Denmark with Clerics and a Battle Scene, about 1400 - 1414
 from Chronicle of Normandy
 Leaf: 29.1 x 19.1 cm (11 7/16 x 7 1/2 in.)
 The J. Paul Getty Museum, Los Angeles
 Ms. Ludwig XIII 4, fol. 2 (83.MP.147.2)



33. Unknown
Hafiz-i Abru
The Appearance of Shakyamuni (the Buddha) after His Death, about 1425
 Ink, opaque watercolor on paper
 Leaf: 33 x 22.30 cm
 Los Angeles County Museum of Art, The Nasli M. Heeramaneck Collection, gift or Joan Palevsky
 Image: www.lacma.org
 EX.2016.2.15



34. Unknown
Kalaka Converts Bricks to Gold
 about 1450
 Ink, opaque watercolor, and gold on paper
 Leaf: 10.8 x 25.4 cm (4 1/4 x 10 in.)
 Los Angeles County Museum of Art, From the Nasli and Alice Heeramaneck Collection, Museum Associates Purchase
 Image: www.lacma.org
 EX.2016.2.24



35. Franco dei Russi
 Italian, active about 1453 - 1482
Initial E: David Lifting Up His Soul to God, about 1455 - 1461
 Leaf from the Antiphonal of Cardinal Bessarion
 Tempera colors, gold leaf, and ink on parchment
 Leaf: 71.1 x 51.4 cm (28 x 20 1/4 in.)
 The J. Paul Getty Museum, Los Angeles
 Ms. 99, recto (2007.30.recto)



36. Unknown
The Holy Roman Emperor at Court, about 1460 - 1470
 from Story of Two Lovers
 Tempera colors, gold leaf, gold paint, and ink on parchment
 Leaf: 17.6 x 11.4 cm (6 15/16 x 4 1/2 in.)
 The J. Paul Getty Museum, Los Angeles
 Ms. 68, fol. 14v (2001.45.14v)



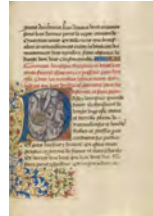
37. Frate Nebridio
 Italian, died before 1503, active second half of the 15th century
 Initial A: Saints Maurice and Theofredus, about 1460 -1480
 Cutting from an antiphonal
 Tempera and gold leaf on parchment
 Leaf: 11.5 x 11.5 cm (4 1/2 x 4 1/2 in.)
 The J. Paul Getty Museum, Los Angeles
 Ms. 91, recto (2005.21.recto)



38. Lieven van Lathem
 Flemish, about 1430 - 1493, active 1454 - 1493
[King Haldin Accusing the Sultan's Daughter Gracienne of Dishonorable Behavior](#), 1464
 from Romance of Gillion de Trazegnies
 Tempera colors, gold, and ink on parchment
 Leaf: 37 x 25.5 cm (14 9/16 x 10 1/16 in.)
 The J. Paul Getty Museum, Los Angeles
 Ms. 111, fol. 150v (2013.46.150v)



39. Master of the Brussels Romuléon or workshop
 Flemish, active about 1465
[Initial N: Bishop Theophilus's Ship Blown Off Course and Bishop Theophilus in Prayer](#), about 1465 - 1470
 from Discovery and Translation of the Body of Saint Anthony
 Tempera colors, gold leaf, gold paint, and ink on parchment
 Leaf: 24.8 x 17.6 cm (9 3/4 x 6 15/16 in.)
 The J. Paul Getty Museum, Los Angeles
 Ms. Ludwig XI 8, fol. 41v (83.MN.127.41v)



40. Master of the Brussels Romuléon or workshop
 Flemish, active about 1465
[Initial P: Bishop Theophilus Sailing near an Island Inhabited by Wild Men](#), about 1465 - 1470
 from Discovery and Translation of the Body of Saint Anthony
 Tempera colors, gold leaf, gold paint, and ink on parchment
 Leaf: 24.8 x 17.6 cm (9 3/4 x 6 15/16 in.)
 The J. Paul Getty Museum, Los Angeles
 Ms. Ludwig XI 8, fol. 42 (83.MN.127.42)



41. Master of Jacques of Luxembourg
 French, active about 1460 - 1470
[Saint James as a Pilgrim](#), about 1466 - 1470
 from Book of Hours
 Tempera colors, gold leaf, silver leaf, and ink on parchment
 Leaf: 16.4 x 11.4 cm (6 7/16 x 4 1/2 in.)
 The J. Paul Getty Museum, Los Angeles
 Ms. Ludwig IX 11, fol. 133 (83.ML.107.133)



42. Follower of Hans Schilling
 German, active 1459 - 1467
 from the Workshop of Diebold Lauber
 German, active 1427 - 1467
[Josaphat Meeting a Blind Man and a Beggar](#), 1469
 from Barlaam and Josaphat
 Ink, colored washes, and tempera colors on paper
 Leaf: 28.6 x 20.3 cm (11 1/4 x 8 in.)
 The J. Paul Getty Museum, Los Angeles
 Ms. Ludwig XV 9, fol. 31v (83.MR.179.31v)



43. Master of the Jardin de vertueuse consolation and assistant
 Flemish, active 3rd quarter of 15th century
[Orsines Presents a Gift to Alexander and the Execution of Orsines](#), about 1470 - 1475
 from Book of the Deeds of Alexander the Great
 Tempera colors, gold leaf, gold paint, and ink on parchment
 Leaf: 43.2 x 33 cm (17 x 13 in.)
 The J. Paul Getty Museum, Los Angeles
 Ms. Ludwig XV 8, fol. 226 (83.MR.178.226)



44. Unknown
[Bathers and Silk Merchants](#), about 1475
 from Mirror of History
 Tempera colors, gold leaf, and gold paint on parchment
 Leaf: 43.8 x 30.5 cm (17 1/4 x 12 in.)
 The J. Paul Getty Museum, Los Angeles
 Ms. Ludwig XIII 5, v1, fol. 65 (83.MP.148.1.65)



45. Unknown
[Pilgrim Flask](#), late 15th or early 16th century
 Free-blown colorless (slightly pink) glass with gold leaf, enamel, and applied decoration
 Object: 37.62 x 20cm (14 13/16 x 7 7/8 in.)
 The J. Paul Getty Museum, Los Angeles
 84.DK.538



46. Master of the Soane Josephus
 Flemish, active about 1475 - 1485
[The Portuguese Embassy](#), about 1480 - 1483
 from Chronicles (Book Three)
 Tempera colors, gold leaf, gold paint, and ink on parchment
 Leaf: 48 x 35 cm (18 7/8 x 13 3/4 in.)
 The J. Paul Getty Museum, Los Angeles
 Ms. Ludwig XIII 7, fol. 112 (83.MP.150.112)



47. Unknown
 Nizami Ganjavi
[Iskandar at the Kaaba](#), about 1485 - 1495
 Ink, opaque watercolor, and gold on paper
 Leaf: 22.8 x 15.6 cm (9 x 6 1/8 in.)
 Los Angeles County Museum of Art, The Nasli M. Heeramaneck Collection, gift of Joan Palevsky
 Image: www.lacma.org
 EX.2016.2.6



48. Unknown
 Prophecy Map of the World
 1485 - 1499
 Ink on paper
 Courtesy of The Huntington Library, Art Collections, and Botanical Gardens, San Marino, California, HM 83, fol. 8v-9
 EX.2016.2.13



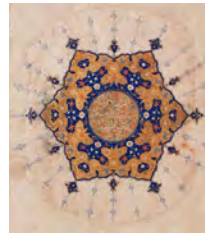
49. Erhard Reuwich
Bernhard von Breydenbach
[Ethiopians](#), published 1486
Woodcut
Unframed: 10.5 x 14.9 cm (4 1/8 x 5 7/8 in.)
Los Angeles County Museum of Art, Gift of Mr. and Mrs. Oscar Salzer
Image: www.lacma.org
EX.2016.2.2



50. Erhard Reuwich
Bernhard von Breydenbach
[Saracens](#), published 1486
Woodcut
Unframed: 31.1 x 19.7 cm (12 1/4 x 7 3/4 in.)
Los Angeles County Museum of Art, Gift of Mr. and Mrs. Oscar Salzer
Image: www.lacma.org
EX.2016.2.3



51. Unknown
Nizami Ganjavi
[Khusraw Parviz Enthroned](#), 1st half of 16th century
Opaque watercolor, gold, and ink
Closed: 20.3 cm (8 in.)
Los Angeles County Museum of Art, The Phil Berg Collection
Image: www.lacma.org
EX.2016.2.1



52. Unknown
[Shamsa Medallions with text from the Qur'an](#)
(1788–89), early 16th century
Watercolors, gold, and ink on paper
32.1 x 20.6 cm (12 5/8 x 8 1/8 in.)
Los Angeles County Museum of Art, The Nasli M. Heeramaneck Collection, gift of Joan Palevsky
Image: www.lacma.org
EX.2016.2.18



53. Unknown
[Shamsa Medallions with text from the Qur'an](#)
(1788–89), early 16th century
Watercolors, gold, and ink on paper
32.4 x 20.6 cm (12 3/4 x 8 1/8 in.)
Los Angeles County Museum of Art, The Nasli M. Heeramaneck Collection, gift of Joan Palevsky
Image: www.lacma.org
EX.2016.2.19

54. Moses ben Jacob Cordovero
Isaac Luria
Hayyim ben Joseph Vital
The Sephirotic Tree, 16th century
Ink on paper on paper
Charles E. Young Research Library. UCLA Library Special Collections
EX.2016.2.20

55. Unknown
Trishala Dreaming, 16th century
Opaque watercolor on palm leaf paper
Norton Simon Museum, Gift of Narendra and Rita
Parson
EX.2016.2.22.3



56. Unknown
Trishala Dreaming, 16th century
Opaque watercolor on palm leaf paper
Norton Simon Museum, Gift of Narendra and Rita
Parson
EX.2016.2.22.4



57. Unknown
[Chasuble Front](#), early 16th century
Cut and voided silk velvet on metallic ground
Object: H: 20.3 to 41.9 x L: 71.1 cm (8 to 16 1/2 x 28 in.)
Los Angeles County Museum of Art, Los Angeles County
Fund
Image: www.lacma.org
EX.2016.2.16



58. Unknown
[The Virgin and Child with the Archangels Michael and Gabriel](#), about 1504 - 1505
from Gospel Book
Tempera on parchment
Leaf: 34.5 x 26.5 cm (13 9/16 x 10 7/16 in.)
The J. Paul Getty Museum, Los Angeles
Ms. 102, fol. 19v (2008.15.19v)



59. Unknown
[Canon Table Page](#), about 1504 - 1505
from Gospel Book
Tempera on parchment
Leaf: 34.5 x 26.5 cm (13 9/16 x 10 7/16 in.)
The J. Paul Getty Museum, Los Angeles
Ms. 102, fol. 20 (2008.15.20)

60. Unknown
[An Elephant](#), 1510 - 1520
from Miscellany: Physiologus; other texts
Pen and red lead and iron gall inks, watercolors,
tempera colors, and gold paint on paper bound between
wood boards covered with probably original brown calf
Leaf: 21.7 x 15.6 cm (8 9/16 x 6 1/8 in.)
The J. Paul Getty Museum, Los Angeles
Ms. Ludwig XV 2, fol. 5 (83.MR.172.5)





61. Unknown
Blue and White Dish with a Merchant Ship, about 1510
 Tin-glazed earthenware
 Object: H: 4.76 x Diam.: 24.29cm (H: 1 7/8 x Diam.: 9 9/16 in.)
 The J. Paul Getty Museum, Los Angeles
 84.DE.109



62. Simon Bening
 Flemish, about 1483 - 1561
The Adoration of the Magi, about 1525 - 1530
 from Prayer Book of Cardinal Albrecht of Brandenburg
 Tempera colors, gold paint, and gold leaf on parchment
 Leaf: 16.8 x 11.4 cm (6 5/8 x 4 1/2 in.)
 The J. Paul Getty Museum, Los Angeles
 Ms. Ludwig IX 19, fol. 36v (83.ML.115.36v)



63. Simon Bening
 Flemish, about 1483 - 1561
Border with the Queen of Sheba before King Solomon, about 1525 - 1530
 from Prayer Book of Cardinal Albrecht of Brandenburg
 Tempera colors, gold paint, and gold leaf on parchment
 Leaf: 16.8 x 11.4 cm (6 5/8 x 4 1/2 in.)
 The J. Paul Getty Museum, Los Angeles
 Ms. Ludwig IX 19, fol. 37 (83.ML.115.37)



64. Unknown, French
Hercules Pendant, about 1540
 Gold, enamel (white, blue and black), and a baroque pearl
 Object: 6 x 5.4 cm (2 3/8 x 2 1/8 in.)
 The J. Paul Getty Museum, Los Angeles
 85.SE.237



65. Unknown
 Nur ad-Din Abd ar-Rahman Jami
 Afghan, 1414 - 1492
The Ladies of Egypt Stunned by Yusuf's Beauty, about 1560
 Ink, opaque watercolors, and gold on paper
 Leaf: 17.1 x 10.5 cm (6 3/4 x 4 1/8 in.)
 Los Angeles County Museum of Art, The Nasll M. Heeramanek Collection, gift of Joan Palevsky
 Image: www.lacma.org
 EX.2016.2.23



66. Abraham Ortelius
 Flemish, 1527 - 1598
Map of the World, 1573
 Engraving
 Closed: 41.8 x 28.5 x 5.5 cm (16 7/16 x 11 1/4 x 2 3/16 in.)
 The Getty Research Institute
 93-B9804

67. Unknown

Narrative Scroll Extolling Manavinayaka, about 1575
Opaque watercolor on cotton
Open: 184.2 x 35.6 cm (72 1/2 x 14 in.)
The Norton Simon Foundation, Gift of Mr. Norton Simon
EX.2016.2.21



69. Heinrich Bünting

German, 1545 - 1606
The World as a Clover Leaf with Jerusalem at the Center, 1591-1597
Woodcut
Closed: 34.1 x 8.9 x 8.6 cm (13 7/16 x 3 1/2 x 3 3/8 in.)
The Getty Research Institute
44-2.bw



71. Abraham Gessner

Swiss, 1552 - 1613
[Globe Cup](#), about 1600
Silver, parcel-gilt
Object: H: 59.1 cm (23 1/4 in.)
Los Angeles County Museum of Art, William Randolph Hearst Collection
Image: www.lacma.org
EX.2016.2.7



68. Unknown

[Maritime Scene](#), late 16th or early 17th century
Silk and metallic thread double cloth
Object: 16.5 x 13.3 cm (6 1/2 x 5 1/4 in.)
Los Angeles County Museum of Art, Costume Council Fund
Image: www.lacma.org
EX.2016.2.17



70. Tulsi

Indian, active 1575 - 1596
and Madhu
Indian, active 1575 - 1604 ?
[Toda Mongke and His Mongol Horde](#), 1596
Opaque watercolor, gold, and ink on paper
Leaf: 38.1 x 25.4 cm (15 x 10 in.)
Los Angeles County Museum of Art, From the Nasli and Alice Heerameck Collection, Museum Associates Purchase
Image: www.lacma.org
EX.2016.2.10



72. Unknown

Firdawsi, Persian, 935-1025
[Zahhak Enthroned with the Two Daughters of Jamshid](#), about 1615
Ink, opaque watercolor, and gold on paper
Leaf: 19.4 x 16.5 cm (7 5/8 x 6 1/2 in.)
Los Angeles County Museum of Art, Museum Acquisition Fund, Indian Art Acquisition Fund, and Julian C. Wright Bequest
Image: www.lacma.org
EX.2016.2.14



73. Unknown
[Tupac Inca Yupanqui](#), completed in 1616
from General History of Peru
The J. Paul Getty Museum, Los Angeles
Ms. Ludwig XIII 16, fol. 49v (83.MP.159.49v)



74. Malnazar
Armenian, active about 1630s
and Aghap'ir
Armenian, active about 1630s
[David in Prayer](#), 1637 - 1638
from Bible
Tempera colors, gold paint, and gold leaf on parchment
Leaf: 25.2 x 18.3 cm (9 15/16 x 7 3/16 in.)
The J. Paul Getty Museum, Los Angeles
Ms. Ludwig I 14, fol. 320v (83.MA.63.320v)



75. Cesare Vecellio
The King and Queen of Florida, from *The Clothing, Ancient and Modern, of Various Parts of the World* (text in Italian), 1664
Woodcut
Closed: 19 x 12.5 x 4.5 cm (7 1/2 x 4 15/16 x 1 3/4 in.)
The Getty Research Institute
2561-053



76. Johann Joachim Prack von Asch
Autograph album of Johann Joachim Prack von Asch, 1587-1612
Bound manuscript
14 cm (5 1/2 in.)
The Getty Research Institute
2013.M.24

