

# Give and Ye Shall Receive: Gift Giving in the Middle Ages

December 12, 2014 to March 15, 2015  
The J. Paul Getty Museum at the Getty Center



1. Unknown  
[Christ in Majesty](#), 1047, binding c. 1150 and later  
Oak boards covered with red silk, fitted with hammered and engraved silver and copper  
Closed: 27.9 x 21.4 x 7 cm (11 x 8 7/16 x 2 3/4 in.)  
The J. Paul Getty Museum, Los Angeles  
Ms. Ludwig V 2, cover (83.MF.77.cover)



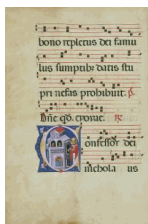
2. Unknown  
[Bishop Engilmar Celebrating Mass](#), about 1030-40 from [Benedictional](#)  
Tempera colors, gold leaf, and ink on parchment  
Leaf: 23.2 x 16 cm (9 1/8 x 6 5/16 in.)  
The J. Paul Getty Museum, Los Angeles  
Ms. Ludwig VII 1, fol. 16 (83.MI.90.16)



3. Unknown  
Text page, 1100 and later  
from Document  
The J. Paul Getty Museum, Los Angeles  
Ms. Ludwig V 2, document recto (83.MF.77.document.rec)



4. Unknown  
Initial H: [Saint Martin Dividing His Cloak](#), about 1260-70 from Antiphonal  
Tempera colors, gold leaf, silver, and ink on parchment  
Leaf (approx.): 48.1 x 34.9 cm (18 15/16 x 13 3/4 in.)  
The J. Paul Getty Museum, Los Angeles  
Ms. 44/Ludwig VI 5, p. 176 (92.MH.22.p. 176)



5. Master of Gerona  
Italian, active about 1300  
[Initial C: Saint Nicholas](#), late 1200s from [Antiphonal](#)  
Tempera colors, gold leaf, and ink on parchment  
Leaf: 58.3 x 40.2 cm (22 15/16 x 15 13/16 in.)  
The J. Paul Getty Museum, Los Angeles  
Ms. Ludwig VI 6, fol. 171v (83.MH.89.171v)

6. Unknown maker, English  
[Saint Bartholomew](#), late fourteenth century  
Tempera colors and gold on parchment  
Leaf: 27.9 x 19 cm (11 x 7 1/2 in.)  
Robert McCarthy  
L.2014.70

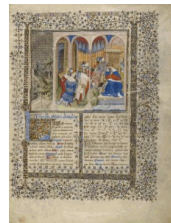
7. Unknown maker, English  
The Holy Trinity and the Virgin Mary Enthroned, late  
fourteenth century  
Tempera colors and gold on parchment  
Leaf: 19.5 x 13 cm (7 11/16 x 5 1/8 in.)  
Robert McCarthy  
L.2014.71

8. Unknown maker, English  
Saint Saturninus, late fourteenth century  
Tempera colors and gold on parchment  
Leaf: 20.1 x 13.4 cm (7 15/16 x 5 1/4 in.)  
Robert McCarthy  
L.2014.72

9. Unknown maker, English  
Saint Christopher, late fourteenth century  
Tempera colors and gold on parchment  
Leaf: 20.1 x 13.5 cm (7 15/16 x 5 5/16 in.)  
Robert McCarthy  
L.2014.73



10. Unknown  
Saints Andrew and Martin, late fourteenth century  
Tempera and gold leaf on vellum  
Closed: 20.3 x 14 cm (8 x 5 1/2 in.)  
Los Angeles County Museum of Art, Gift of the Graphic  
Arts Council, in memory of Saul Marks  
L.2014.115

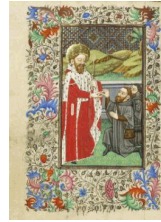


11. Unknown  
A Scribe and a Woman, about 1400-1410 addition in  
1487  
from [World Chronicle](#)  
Tempera colors, gold, silver paint, and ink on parchment  
Leaf: 33.5 x 23.5 cm (13 3/16 x 9 1/4 in.)  
The J. Paul Getty Museum, Los Angeles  
Ms. 33, fol. 3 (88.MP.70.3)

12. Virgil Master  
French, active about 1380 - 1420  
[Alchandreus Presents His Work to a King](#), about 1405  
from [Book of the Philosopher Alchandreus](#)  
Tempera colors, gold paint, gold leaf, and ink on  
parchment  
Leaf: 39 x 30.5 cm (15 3/8 x 12 in.)  
The J. Paul Getty Museum, Los Angeles  
Ms. 72, fol. 2 (2003.25.2)



13. Unknown  
Decorated Initial D, 1420-30  
from Psalter  
Tempera colors, gold leaf, gold paint, and ink on parchment bound between pasteboard covered with red morocco  
Leaf: 35.6 x 24.1 cm (14 x 9 1/2 in.)  
The J. Paul Getty Museum, Los Angeles  
Ms. 17, fol. 61v (85.MK.318.61v)



14. Master of Sir John Fastolf  
French, active before about 1420 - about 1450  
Saint Edward the Confessor, about 1430-40  
from [Book of Hours](#)  
Tempera colors, gold leaf, and ink on parchment  
Leaf: 12.1 x 9.2 cm (4 3/4 x 3 5/8 in.)  
The J. Paul Getty Museum, Los Angeles  
Ms. 5, fol. 42v (84.ML.723.42v)



15. Master of the Cypresses (Pedro de Toledo?)  
Spanish, active 1430s  
or Workshop of Master of the Cypresses (Pedro de Toledo?)  
Spanish, active 1430s  
Initial K: Caritas, about 1430-40  
from Historiated Initial from a Gradual  
Tempera colors, gold leaf, and ink on parchment  
Leaf: 36 x 31.4 cm (14 3/16 x 12 3/8 in.)  
The J. Paul Getty Museum, Los Angeles  
Ms. 15, verso (85.MS.211.verso)



16. Franco dei Russi  
Italian, active about 1453 - 1482  
[Initial E: The Adoration of the Magi](#), 1470s  
Cutting from a choir book  
Tempera and gold on parchment  
Leaf: 15 x 15.7 cm (5 7/8 x 6 3/16 in.)  
The J. Paul Getty Museum, Los Angeles  
Ms. 83, recto (2003.114.recto)



17. Master of the Soane Josephus  
Flemish, active about 1475 - 1485  
[The Portuguese Embassy](#), about 1480-83  
from [Chronicles \(Book Three\)](#)  
Tempera colors, gold leaf, gold paint, and ink on parchment  
Leaf: 48 x 35 cm (18 7/8 x 13 3/4 in.)  
The J. Paul Getty Museum, Los Angeles  
Ms. Ludwig XIII 7, fol. 112 (83.MP.150.112)



18. Unknown  
Duke Albrecht IV the Wise and His Wife Kunigunde of Austria Adoring the Virgin, about 1400-1410 addition in 1487  
from [World Chronicle](#)  
Tempera colors, gold, silver paint, and ink on parchment  
Leaf: 33.5 x 23.5 cm (13 3/16 x 9 1/4 in.)  
The J. Paul Getty Museum, Los Angeles  
Ms. 33, fol. 2v (88.MP.70.2v)



19. Master of the Chronique scandaleuse  
French, active about 1493 - 1510  
Saint John on Patmos, about 1500  
from [Poncher Hours](#)  
Tempera colors, ink and gold on parchment  
Leaf: 13.3 x 8.7 cm (5 1/4 x 3 7/16 in.)  
The J. Paul Getty Museum, Los Angeles  
Ms. 109, fol. 93 (2011.40.93)



20. Joris Hoefnagel  
Flemish / Hungarian, 1542 - 1600  
Butterfly, Sweet Cherry, and Land Snails, 1561-62 and  
about 1591-96  
from [Model Book of Calligraphy](#)  
Watercolors, gold and silver paint, and ink on parchment  
Leaf: 16.6 x 12.4 cm (6 9/16 x 4 7/8 in.)  
The J. Paul Getty Museum, Los Angeles  
Ms. 20, fol. 112 (86.MV.527.112)



21. Jörg Ziegler  
German, early 16th century - 1574/1577, active about  
1538-1574/1577  
[Charles I Hohenzollern](#), about 1572  
from Chronicle of the Hohenzollern Family  
Pen and ink, colored washes, tempera, and gold paint on  
parchment  
Leaf: 35.2 x 27.8 cm (13 7/8 x 10 15/16 in.)  
The J. Paul Getty Museum, Los Angeles  
Ms. Ludwig XIII 11, fol. 27 (83.MP.154.27)

