

Gardens of the Renaissance

May 28 to August 11, 2013

The J. Paul Getty Museum at the Getty Center



1. Unknown

The Agony in the Garden, about 1400-1410
from [World Chronicle](#)

Tempera colors, gold, silver paint, and ink on parchment

Leaf: 33.5 x 23.5 cm (13 3/16 x 9 1/4 in.)

Ms. 33, fol. 287v (88.MP.70.287v)



2. Unknown

The Betrayal of Christ, about 1400-1410
from [World Chronicle](#)

Tempera colors, gold, silver paint, and ink on parchment

Leaf: 33.5 x 23.5 cm (13 3/16 x 9 1/4 in.)

Ms. 33, fol. 288 (88.MP.70.288)



3. Unknown

[Scipio Lying in Bed Dreaming; Guillaume de Lorris Lying in Bed Dreaming](#), about 1405
from [Romance of the Rose](#)

Tempera colors, gold leaf, and ink on parchment bound between pasteboard covered with dark red morocco

Leaf: 36.7 x 26 cm (14 7/16 x 10 1/4 in.)

Ms. Ludwig XV 7, fol. 1 (83.MR.177.1)



4. Master of the Oxford Hours

French, active about 1440s

Adam and Eve Eating the Forbidden Fruit, about 1440-50

from [City of God](#)

Tempera colors, gold and silver paint on parchment

Leaf: 36.2 x 27.3 cm (14 1/4 x 10 3/4 in.)

Ms. Ludwig XI 10, fol. 31v (83.MN.129.31v)



5. Willem Vrelant

Flemish, died 1481, active 1454 - 1481

[Adam and Eve Eating the Forbidden Fruit](#), early 1460s
from [Arenberg Hours](#)

Tempera colors, gold leaf, and ink on parchment

Leaf: 25.6 x 17.3 cm (10 1/16 x 6 13/16 in.)

Ms. Ludwig IX 8, fol. 137 (83.ML.104.137)



6. Lieven van Lathem

Flemish, about 1430 - 1493, active 1454 - 1493

[Noli me tangere](#), 1469

from [Prayer Book of Charles the Bold](#)

Tempera colors, gold leaf, gold paint, silver paint, and ink on parchment

Leaf: 12.4 x 9.2 cm (4 7/8 x 3 5/8 in.)

Ms. 37, fol. 46v (89.ML.35.46v)

July 15, 2013

Additional information about some of these works of art can be found by searching [getty.edu](http://www.getty.edu) at <http://www.getty.edu/art/gettyguide/>



7. Master of the Jardin de vertueuse consolation and assistant
Flemish, active 3rd quarter of 15th century
[The Death of Parmenion](#), about 1470-75
from [Book of the Deeds of Alexander the Great](#)
Tempera colors, gold leaf, gold paint, and ink on parchment
Leaf: 43.2 x 33 cm (17 x 13 in.)
Ms. Ludwig XV 8, fol. 154 (83.MR.178.154)

8. Follower of Maître François
French, active about 1460 - 1480
[The God of Love Vanishes](#), about 1470
from [Romance of the Rose](#)
Tempera colors, ink, and gold on parchment
Leaf: 28.6 x 20.6 cm (11 1/4 x 8 1/8 in.)
L.2004.54.14v



9. Follower of Maître François
French, active about 1460 - 1480
[Fair Welcoming Offers the Lover the Rose](#), about 1470
from [Romance of the Rose](#)
Tempera colors, ink, and gold on parchment
Leaf: 28.6 x 20.6 cm (11 1/4 x 8 1/8 in.)
L.2004.54.15

10. Upper Rhenish Master
German, active about 1470 - 1490
[Christ as the Gardener](#), About 1470-90
Pen and gray-black ink on paper
24.1 x 10.8 cm (9 1/2 x 4 1/4 in.)
2003.11



11. Unknown
[The Angel of Paradise with a Sword](#), about 1475
from [Mirror of History](#)
Tempera colors, gold leaf, and gold paint on parchment
Leaf: 43.8 x 30.5 cm (17 1/4 x 12 in.)
Ms. Ludwig XIII 5, v1, fol. 54v (83.MP.148.1.54v)



12. Unknown
[The Land of India](#), about 1475
from [Mirror of History](#)
Tempera colors, gold leaf, and gold paint on parchment
Leaf: 43.8 x 30.5 cm (17 1/4 x 12 in.)
Ms. Ludwig XIII 5, v1, fol. 55 (83.MP.148.1.55)



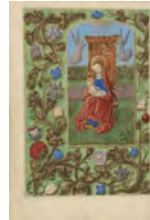
13. Jean Bourdichon
French, 1457 - 1521, active Tours, France, early 1480s - 1521
[The Adoration of the Magi](#), about 1480-85
from [Katherine Hours](#)
Tempera colors, gold, and ink on parchment
Leaf: 16.4 x 11.6 cm (6 7/16 x 4 9/16 in.)
Ms. 6, fol. 59 (84.ML.746.59)



15. Jean Bourdichon
French, 1457 - 1521, active Tours, France, early 1480s - 1521
[Bathsheba Bathing](#), 1498-99
Leaf from the Hours of Louis XII
Tempera and gold on parchment
Leaf: 24.3 x 17 cm (9 9/16 x 6 11/16 in.)
Ms. 79, recto (2003.105.recto)



17. Workshop of Gerard Horenbout
Flemish, 1465 - 1541, active 1487 - about 1520
[Initial H: David in Prayer](#), about 1500
from Book of Hours
Tempera colors and gold paint on parchment
Leaf: 15.2 x 11.1 cm (6 x 4 3/8 in.)
Ms. Ludwig IX 17, fol. 71 (83.ML.113.71)



14. Master of the Dresden Prayer Book or workshop
Flemish, active about 1480 - 1515
[The Virgin and Child Enthroned](#), about 1480-85(?)
from [Crohin-La Fontaine Hours](#)
Tempera colors and gold on parchment
Leaf: 20.5 x 14.8 cm (8 1/16 x 5 13/16 in.)
Ms. 23, fol. 29v (86.ML.606.29v)



16. Unknown
Decorated Text Page, 1498-99
Leaf from the Hours of Louis XII
Tempera and gold on parchment
Leaf: 24.3 x 17 cm (9 9/16 x 6 11/16 in.)
Ms. 79, verso (2003.105.verso)



18. Jan Gossaert (called Mabuse)
Netherlandish, about 1478 - 1532
[The Holy Family](#), about 1507-8
Oil on panel
Unframed: 46 x 33.7 cm (18 1/8 x 13 1/4 in.)
71.PB.45



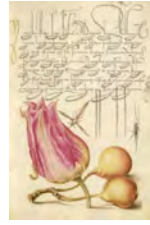
19. Master of James IV of Scotland
Flemish, before 1465 - about 1541
[The Annunciation](#), about 1510-20
from [Spinola Hours](#)
Tempera colors, gold, and ink on parchment
Leaf: 23.2 x 16.7 cm (9 1/8 x 6 9/16 in.)
Ms. Ludwig IX 18, fol. 92v (83.ML.114.92v)



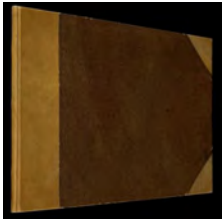
20. Master of James IV of Scotland
Flemish, before 1465 - about 1541
[Scenes from the Life of Gideon and Moses and the Burning Bush](#), about 1510-20
from [Spinola Hours](#)
Tempera colors, gold, and ink on parchment
Leaf: 23.2 x 16.7 cm (9 1/8 x 6 9/16 in.)
Ms. Ludwig IX 18, fol. 93 (83.ML.114.93)



21. Francesco Colonna
Italian author, active 1499
[Poliphilo and Polia Surrounded by Nymphs](#), About 1545
Ink on paper
Closed: 31.1 x 22 x 4 cm (12 1/4 x 8 11/16 x 1 9/16 in.)
The Getty Research Institute
87-B3229



22. Joris Hoefnagel
Flemish / Hungarian, 1542 - 1600
[Insect, Tulip, Caterpillar, Spider, Pear](#), about 1591-96
from [Model Book of Calligraphy](#)
Watercolors, gold and silver paint, and ink on parchment
Leaf: 16.6 x 12.4 cm (6 9/16 x 4 7/8 in.)
Ms. 20, fol. 25 (86.MV.527.25)



23. Orazio Scarabelli
[A View of a Garden Float Extended](#), About 1592
Ink on paper
pl. 10: 23.8 x 35.3 cm (9 3/8 x 13 7/8 in.)
The Getty Research Institute
2000.PR.48



24. Georg Strauch
German, 1613 - 1675
[The Nuremberg Residence and Garden of Magdalene Pairin](#), about 1626-1711
from [Genealogy of the Derrer Family](#)
Tempera colors with gold and silver highlights on parchment
Leaf: 37.6 x 26 cm (14 13/16 x 10 1/4 in.)
Ms. Ludwig XIII 12, fol. 130bis (83.MP.155.130bis)



25. Georg Strauch
German, 1613 - 1675
[The Annunciation](#), about 1626-1711
from Genealogy of the Derrer Family
Tempera colors with gold and silver highlights on parchment
Leaf: 37.6 x 26 cm (14 13/16 x 10 1/4 in.)
Ms. Ludwig XIII 12, fol. 130v (83.MP.155.130v)



26. James Robertson
English, 1813 - 1888
Felice Beato
English, born Italy, 1832 - 1909
Antonio Beato
English, born Italy, about 1835 - 1906
The Garden of Gethsemane, 1857
Albumen silver print
Image: 24.9 x 31.4 cm (9 13/16 x 12 3/8 in.)
84.XP.219.48

