

Disegno: Drawing in Europe 1520-1600

November 13, 2012 to February 3, 2013

The J. Paul Getty Museum at the Getty Center

1. François Gentil

French, 1510 - 1588

After Francesco Primaticcio

Italian, 1504 - 1570

Wounded Hector Carried into Troy, About 1540-50

Engraving

Unframed: 25.4 x 38.3 cm (10 x 15 1/16 in.)

Los Angeles County Museum of Art, Mary Stansbury

Ruiz Bequest

L.2012.3



3. Pontormo (Jacopo Carucci)

Italian (Florentine), 1494 - 1557

[Seated Male Nude](#), 1520

Red chalk

29.4 x 20 cm (11 9/16 x 7 7/8 in.)

The J. Paul Getty Museum, Los Angeles

90.GB.34



2. Pontormo (Jacopo Carucci)

Italian (Florentine), 1494 - 1557

[Male Nude](#), 1518

Red heightened with white chalk

38.9 x 24 cm (15 5/16 x 9 7/16 in.)

The J. Paul Getty Museum, Los Angeles

87.GB.95



4. Parmigianino (Francesco Mazzola)

Italian, 1503 - 1540

[Saint Jerome](#), About 1526-27

Pen and brown ink with brown wash, heightened with white gouache

21.6 x 24.3 cm (8 1/2 x 9 9/16 in.)

The J. Paul Getty Museum, Los Angeles

84.GA.9



5. Giulio Romano (Giulio Pippi)
Italian (Roman), before 1499 - 1546
[Victory, Janus, Chronos, and Gaea](#), About 1532-34
Pen and brown ink, brown wash, and black chalk
37.5 x 31.8 cm (14 3/4 x 12 1/2 in.)
The J. Paul Getty Museum, Los Angeles
94.GA.32



6. Parmigianino (Francesco Mazzola)
Italian, 1503 - 1540
[Madonna and Child](#), About 1535
10.2 x 8.6 cm (4 x 3 3/8 in.)
The J. Paul Getty Museum, Los Angeles
83.GA.265



7. Rosso Fiorentino (Giovanni Battista di Jacopo di Gasparre)
Italian, 1494 - 1540
[Judith with the Head of Holofernes](#), About 1535
Red chalk, squared in black chalk
Unframed: 23.2 x 19.7 cm (9 1/8 x 7 3/4 in.)
Los Angeles County Museum of Art, Dalzell Hatfield Memorial Fund
L.2012.6

8. Rosso Fiorentino (Giovanni Battista di Jacopo di Gasparre)
Italian, 1494 - 1540
[Male Figure](#), About 1538-40
Red and black chalk, partly indented
25.1 x 14.8 cm (9 7/8 x 5 13/16 in.)
The J. Paul Getty Museum, Los Angeles
83.GB.261

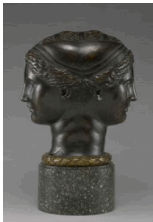


9. Francesco Primaticcio
Italian, 1504 - 1570
[Centaur and Lapith](#), 1542
Red chalk
21.7 x 27.8 cm (8 9/16 x 10 15/16 in.)
The J. Paul Getty Museum, Los Angeles
89.GB.66



10. Giulio Campi
Italian, about 1508 - 1573
[Neptune](#), 1541
Black chalk, partly indented
42.7 x 27.6 cm (16 13/16 x 10 7/8 in.)
The J. Paul Getty Museum, Los Angeles
90.GB.66

11. Francesco Primaticcio
 Italian, 1504 - 1570
 Allegorical Figure of Prudence, About 1541-46
 Pen and brown ink, brown wash, and black chalk
 Unframed: 21.8 x 13.9 cm (8 9/16 x 5 1/2 in.)
 Yuki and Alex Bouzari
 L.2012.2



13. Attributed to Francesco Primaticcio
 Italian, 1504 - 1570
 Double Head, About 1543
 Bronze
 Object: H: 38.5 x W: 35 x D: 20 cm (15 3/16 x 13 3/4 x 7 7/8 in.)
 The J. Paul Getty Museum, Los Angeles
 2011.45



15. Giorgio Vasari
 Italian, 1511 - 1574
 Youth Running, About 1544-45
 Pen and brown ink, brown wash, and black chalk,
 heightened with white gouache, on blue paper
 44.9 x 19.7 cm (17 11/16 x 7 3/4 in.)
 The J. Paul Getty Museum, Los Angeles
 94.GA.33.2



12. Perino del Vaga (Piero Buonaccorsi)
 Italian, about 1501 - 1547
 Figures and Architecture (recto); Figures in Costume
 (verso), About 1542-45
 Pen and brown ink, brown and gray wash, and black
 chalk, partly indented (recto); pen and brown ink with
 brown wash (verso)
 32.7 x 22.2 cm (12 7/8 x 8 3/4 in.)
 The J. Paul Getty Museum, Los Angeles
 88.GG.132



14. Giorgio Vasari
 Italian, 1511 - 1574
 Bearded Man Filling a Cup, About 1544-45
 Pen and brown ink, brown wash, and black chalk,
 heightened with white gouache, on blue paper
 44.9 x 19.7 cm (17 11/16 x 7 3/4 in.)
 The J. Paul Getty Museum, Los Angeles
 94.GA.33.1



16. Agnolo Bronzino
 Italian, 1503 - 1572
 Study of a Man's Right Hand, About 1545-52
 Black chalk (recto)
 7.6 x 15.2 cm (3 x 6 in.)
 The J. Paul Getty Museum, Los Angeles
 92.GB.40

17. Jean Mignon
 French, active about 1537 - 1547
 After Luca Penni
 Italian, 1500/1504 - 1556
 The Death of Adonis, About 1545
 Pen and brown ink, brown wash, and black chalk
 Unframed: 28.1 x 24 cm (11 1/16 x 9 7/16 in.)
 Los Angeles County Museum of Art, Mary Stansbury
 Ruiz Bequest
 L.2012.4



19. Francesco Primaticcio
 Italian, 1504 - 1570
[Vulcan at His Forge](#), About 1550
 Pen and brown ink with brown wash, heightened with
 white gouache and squared in black chalk
 25.1 x 14 cm (9 7/8 x 5 1/2 in.)
 The J. Paul Getty Museum, Los Angeles
 84.GA.54



21. Andrea Schiavone (Andrea Meldolla)
 Italian, about 1510 - 1563
[The Mystic Marriage of Saint Catherine with Saints and a
 Doge](#), About 1550-53
 Pen and brown ink with gray wash, heightened with white
 gouache
 27.3 x 31.8 cm (10 3/4 x 12 1/2 in.)
 The J. Paul Getty Museum, Los Angeles
 91.GG.77



18. Agnolo Bronzino
 Italian, 1503 - 1572
[Head of a Man](#), About 1550-55
 Black chalk
 13.8 x 10.3 cm (5 7/16 x 4 1/16 in.)
 The J. Paul Getty Museum, Los Angeles
 90.GB.29



20. Francesco Salviati
 Italian, 1510 - 1563
[Reclining Male Nude](#), About 1550
 Red chalk heightened with white chalk
 27 x 39.7 cm (10 5/8 x 15 5/8 in.)
 The J. Paul Getty Museum, Los Angeles
 86.GB.574



22. Unknown maker, School of Fontainebleau
[Pan Cutting Reeds](#), About 1550
 Pen and brown ink, brown wash, and black chalk on
 joined pieces of brown paper, with framing line in brown
 ink and squared in black chalk
 56.2 x 40.8 cm (22 1/8 x 16 1/16 in.)
 The J. Paul Getty Museum, Los Angeles
 2009.73



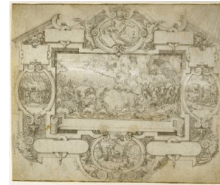
23. Taddeo Zuccaro
Italian, 1529 - 1566
[Figure Studies](#), About 1553-56
Pen and brown ink, brown wash, and black chalk
26.4 x 35.2 cm (10 3/8 x 13 7/8 in.)
The J. Paul Getty Museum, Los Angeles
91.GG.58



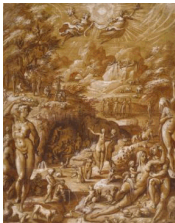
24. Francesco Primaticcio
Italian, 1504 - 1570
[God the Father, with Arm Studies](#), About 1555-60
Red chalk, heightened with white gouache, on pink prepared paper
17.1 x 22.4 cm (6 3/4 x 8 13/16 in.)
The J. Paul Getty Museum, Los Angeles
88.GB.5



25. Taddeo Zuccaro
Italian, 1529 - 1566
[The Conversion of Saint Paul](#), 1558/59-1566
Pen and brown ink, brown wash, and black chalk, heightened with white gouache, on blue paper
26.2 x 39.5 cm (10 5/16 x 15 9/16 in.)
The J. Paul Getty Museum, Los Angeles
91.GA.13



26. Etienne Delaune
French, born Italy, 1518/1519 - 1583
[The Destruction of Pharaoh's Army and Other Scenes](#), About 1560-70
Pen and black and brown ink with gray wash on vellum
25.9 x 31 cm (10 3/16 x 12 3/16 in.)
The J. Paul Getty Museum, Los Angeles
91.GG.76



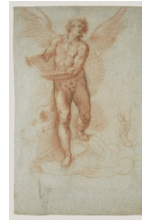
27. Jacopo Zucchi
Italian, about 1541 - 1596
[The Age of Gold](#), About 1570
Pen and brown ink with brown, ocher, and red wash, heightened with white gouache, on ocher-washed paper
47.9 x 37.8 cm (18 7/8 x 14 7/8 in.)
The J. Paul Getty Museum, Los Angeles
84.GG.22



28. Giovanni Battista Naldini
Italian, about 1537 - 1591
[Christ Raising the Son of the Widow of Naim](#), About 1570-80
Pen and iron gall ink, brown wash, and black chalk, heightened with white gouache, on blue paper
21.6 x 31.8 cm (8 1/2 x 12 1/2 in.)
The J. Paul Getty Museum, Los Angeles
88.GA.53



29. Bartolomeo Passarotti
Italian, 1529 - 1592
[Male Nudes](#), About 1570-80
Pen and brown ink
29.5 x 23.5 cm (11 5/8 x 9 1/4 in.)
The J. Paul Getty Museum, Los Angeles
88.GA.109



30. Cristoforo Roncalli (Il Pomarancio)
Italian, 1552 - 1626
[Angel Holding a Book](#), About 1583-86
36.5 x 26 cm (14 3/8 x 10 1/4 in.)
The J. Paul Getty Museum, Los Angeles
2001.60



31. Hendrick Goltzius
Dutch, 1558 - 1617
[Venus and Mars Surprised by Vulcan](#), 1585
Pen and brown ink, brown wash, and black chalk,
heightened with white gouache, folded into squares, and
partly indented
41.6 x 31.3 cm (16 3/8 x 12 5/16 in.)
The J. Paul Getty Museum, Los Angeles
84.GG.810



32. Jan Harmensz. Muller
Dutch, 1571 - 1628
[Embracing Couple](#), About 1588-94
Pen and brown ink, brown wash, and black chalk,
heightened with white gouache, on light brown paper
18.7 x 21.7 cm (7 3/8 x 8 9/16 in.)
The J. Paul Getty Museum, Los Angeles
86.GG.595



33. Toussaint Dubreuil
French, 1558/1561 - 1602
Nude Warrior Leaning on a Volute (recto); Nude Child
Playing the Viola da Gamba (verso), About 1589-1602
Pen and brown ink with black chalk (recto); black and red
chalk (verso)
27.1 x 17 cm (10 11/16 x 6 11/16 in.)
The J. Paul Getty Museum, Los Angeles
2011.25



34. Karel van Mander
Dutch, 1548 - 1606
[Female Nude](#), About 1590
Pen and brown ink, grayish-brown wash, and black chalk
19.8 x 12.2 cm (7 13/16 x 4 13/16 in.)
The J. Paul Getty Museum, Los Angeles
91.GG.12



35. Abraham Bloemaert
Dutch, 1564 - 1651
[Venus and Mars](#), About 1592
Pen and brown ink, brown wash, and black chalk,
heightened with white gouache
41.1 x 30.2 cm (16 3/16 x 11 7/8 in.)
The J. Paul Getty Museum, Los Angeles
88.GG.40

36. Abraham Bloemaert
Dutch, 1564 - 1651
[River Gods Watching Apollo Pursuing Daphne](#), About 1592
Pen and brown ink, brown wash, and black chalk
Unframed: 24.6 x 27.5 cm (9 11/16 x 10 13/16 in.)
Yuki and Alex Bouzari
L.2012.52



37. Joseph Heintz the Elder
Swiss, 1564 - 1609
[Toilette of Venus](#), 1594
Red and black chalk
21.6 x 15.1 cm (8 1/2 x 5 15/16 in.)
The J. Paul Getty Museum, Los Angeles
91.GB.66



38. Cornelis Ketel
Dutch, 1548 - 1616
[Charity, Gratitude, and Ingratitude](#), About 1594
Pen and brown ink with brown wash, heightened with
white gouache
25.8 x 21.7 cm (10 3/16 x 8 9/16 in.)
The J. Paul Getty Museum, Los Angeles
2009.65



39. Federico Zuccaro
Italian, about 1541 - 1609
[Taddeo Drawing Michelangelo's Last Judgment in the Sistine Chapel](#), About 1595
Pen and brown ink, brown wash, and black and red chalk
41.9 x 17.7 cm (16 1/2 x 6 15/16 in.)
The J. Paul Getty Museum, Los Angeles
99.GA.6.18

40. Jan Harmensz. Muller
Dutch, 1571 - 1628
[After Bartholomaeus Spranger](#)
Flemish, 1546 - 1611
[Cupid Discovering Psyche in His Bed](#), About 1600-1605
Engraving
Unframed: 38.1 x 51.4 cm (15 x 20 1/4 in.)
Los Angeles County Museum of Art, Mary Stansbury
Ruiz Bequest
L.2012.5



41. Joachim Anthonisz. Wtewael
Dutch, 1566 - 1638
[Young Woman Assisted by a Gentleman](#), About 1609-11
Pen and black ink with gray wash, heightened with white
gouache
19.4 x 24.9 cm (7 5/8 x 9 13/16 in.)
The J. Paul Getty Museum, Los Angeles
85.GA.230



The J. Paul Getty Museum

November 21, 2012

Additional information about some of these works of art can be found by searching [getty.edu](http://www.getty.edu/art/gettyguide/) at <http://www.getty.edu/art/gettyguide/>

© 2012 J. Paul Getty Trust