

Drawing the Classical Figure

December 23, 2008 to March 8, 2009

The J. Paul Getty Museum at the Getty Center



1. Joseph-Benoît Suvée
Belgian, 1744 - 1807
[The Invention of Drawing \(recto\)](#); [Sketch of Lower Leg Bones of Human Skeleton \(verso\)](#), about 1791
Black and white chalk on brown paper (recto); graphite (verso)
54.6 x 35.6 cm (21 1/2 x 14 in.)
The J. Paul Getty Museum, Los Angeles
87.GB.145



2. William Blake
British, 1757 - 1827
[Satan Exulting over Eve](#), 1795
Graphite, pen and black ink, and watercolor over color print
42.6 x 53.5 cm (16 3/4 x 21 1/16 in.)
The J. Paul Getty Museum, Los Angeles
84.GC.49



3. Hendrick Goltzius
Dutch, 1558 - 1617
[Venus and Mars Surprised by Vulcan](#), 1585
Pen and brown ink, brown wash, white gouache heightening, and black chalk, folded into squares, incised for transfer, lower right corner replaced
41.6 x 31.3 cm (16 3/8 x 12 5/16 in.)
The J. Paul Getty Museum, Los Angeles
84.GG.810



4. Jan Harmensz. Muller
Dutch, 1571 - 1628
[Embracing Couple \(Mercury and Lara?\)](#), 1588 - about 1594
Black chalk, pen and brown ink, brown wash heightened with white gouache, on light brown paper
18.7 x 21.7 cm (7 3/8 x 8 9/16 in.)
The J. Paul Getty Museum, Los Angeles
86.GG.595



5. Cornelis Cornelisz van Haarlem
Dutch, 1562 - 1638
[Two Male Nudes](#), about 1590
Oil on paper grisaille
27.1 x 19.2 cm (10 11/16 x 7 9/16 in.)
The J. Paul Getty Museum, Los Angeles
84.GG.32



6. Abraham Bloemaert
Dutch, 1564 - 1651
[Mars and Venus](#), about 1592
Pen and brown ink, brown wash, white heightening
over traces of black chalk
41.1 x 30.2 cm (16 3/16 x 11 7/8 in.)
The J. Paul Getty Museum, Los Angeles
88.GG.40



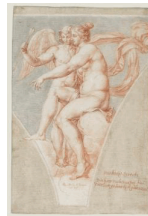
7. Jan de Bisschop
Dutch, 1628 - 1671
[The Sons of Niobe Being Slain by Apollo and Diana](#),
about 1660 - 1670
Brown wash over black chalk
24 x 40.8 cm (9 7/16 x 16 1/16 in.)
The J. Paul Getty Museum, Los Angeles
88.GA.54



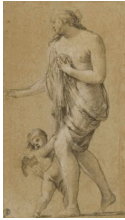
8. Stradanus
Flemish, active Italy, 1523 - 1605
[The Arno with Fishermen](#), between 1580 and 1596
Pen and brown ink, brown and blue wash, and white
gouache heightening on gray paper, irregular section cut
out and replaced at bottom center by artist
20.3 x 30 cm (8 x 11 13/16 in.)
The J. Paul Getty Museum, Los Angeles
83.GG.380



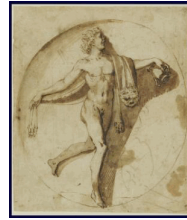
9. Peter Paul Rubens
Flemish, 1577 - 1640
[Three Groups of Apostles in a Last Supper \(recto\); Three Sketches for Medea and Her Children \(verso\)](#), about
1600 - 1604
Pen and brown ink
29.7 x 43.8 cm (11 11/16 x 17 1/4 in.)
The J. Paul Getty Museum, Los Angeles
84.GA.959



10. Pieter van Lint
Flemish, 1609 - 1690
[Venus and Cupid \(after Raphael\)](#), 1636
Black and red chalk and brown wash
41.8 x 27.9 cm (16 7/16 x 11 in.)
The J. Paul Getty Museum, Los Angeles
2000.26



11. Simon Vouet
French, 1590 - 1649
[Study of a Female Figure with a Putto \(recto\); Study of a Male Nude \(verso\)](#), about 1630 - 1635
Black chalk with white chalk
38.7 x 21.7 cm (15 1/4 x 8 9/16 in.)
The J. Paul Getty Museum, Los Angeles
87.GB.104



12. Nicolas Poussin
French, 1594 - 1665
[Votary of Bacchus](#), about 1640
Pen and brown ink and brown wash
15.7 x 13.5 cm (6 3/16 x 5 5/16 in.)
The J. Paul Getty Museum, Los Angeles
86.GG.469



13. Eustache Le Sueur
French, 1616 - 1655
[Study for the figure of Astasius](#), about 1652
Black chalk
39.1 x 25.9 cm (15 3/8 x 10 3/16 in.)
The J. Paul Getty Museum, Los Angeles
2001.49

15. Charles-Nicolas Cochin II
French, 1715 - 1790
Dessein / Ecole de Dessein, [after 1777?]
letterpress; engraving
Plate (plate 1): 35.4 x 22.5 cm (13 15/16 x 8 7/8 in.)
Research Library, The Getty Research Institute, Los Angeles, California
85-B16658.p12-pl1



16. Baron François-Pascal-Simon Gérard
French, born Italy 1770 - 1837
[The Father of Psyche Consulting the Oracle of Apollo](#), about 1796
Pen and brown and gray ink, gray and brown wash, white gouache, and black chalk underdrawing
18.9 x 14.6 cm (7 7/16 x 5 3/4 in.)
The J. Paul Getty Museum, Los Angeles
92.GA.108



17. Anne-Louis Girodet de Roucy-Trioson
French, 1767 - 1824
[Phaedra Rejecting the Embraces of Theseus](#), about 1800
Pencil, pen and brown ink, brown wash, heightened with white gouache
33.7 x 22.5 cm (13 1/4 x 8 7/8 in.)
The J. Paul Getty Museum, Los Angeles
85.GG.209



18. Pierre-Paul Prud'hon
French, 1758 - 1823
[Study of a Female Nude](#), about 1800
Black and white chalk with stumping on blue paper
60.4 x 31.8 cm (23 3/4 x 12 1/2 in.)
The J. Paul Getty Museum, Los Angeles
99.GB.49



19. Jérôme-Martin Langlois
French, 1778 - 1838
[Alexander Ceding Campaspe to Apelles](#), 1819
Black and white chalk, gray washes, heightened with white gouache
39.1 x 51.4 cm (15 3/8 x 20 1/4 in.)
The J. Paul Getty Museum, Los Angeles
86.GG.475



20. Unknown maker, North or Central Italian School
Female Figure Holding a Cithara and a Male Figure,
about 1440
Pen and brown ink
19.7 x 12.7 cm (7 3/4 x 5 in.)
The J. Paul Getty Museum, Los Angeles
92.GA.114



21. Paduan School
Italian, active 15th century
A Satyr Playing an Aulos, about 1480 - 1490
Pen and brown ink
20.2 x 10.3 cm (7 15/16 x 4 1/16 in.)
The J. Paul Getty Museum, Los Angeles
88.GA.91



22. Giulio Romano (Giulio Pippi)
Italian (Roman), before 1499 - 1546
or Raphael (Raffaello Sanzio)
Italian, 1483 - 1520
[The Sacrifice of Isaac](#), about 1516 - 1518
Red chalk
28.3 x 19.1 cm (11 1/8 x 7 1/2 in.)
The J. Paul Getty Museum, Los Angeles
92.GB.37



23. Baldassare Peruzzi
Italian, 1481 - 1536
[Odysseus and the Daughters of Lycomedes](#), about 1520
Pen and brown ink, black chalk with white gouache
heightening, squared
Greatest extent: 17.6 x 24.1 cm (Greatest extent: 6
15/16 x 9 1/2 in.)
The J. Paul Getty Museum, Los Angeles
85.GG.39



24. Parmigianino (Francesco Mazzola)
Italian, 1503 - 1540
[Figure Study](#), 1526 - 1527
Pen and brown ink, brown wash, with white gouache heightening
21.6 x 24.3 cm (8 1/2 x 9 9/16 in.)
The J. Paul Getty Museum, Los Angeles
84.GA.9



25. Michelangelo Buonarroti
Italian, 1475 - 1564
[The Holy Family with the Infant Saint John the Baptist \(recto\)](#); [Amorous Putti at Play](#); [Head of a Bird \(verso\)](#), about 1530
Black and red chalk with pen and brown ink over stylus (recto); Pen and black and brown ink (verso)
27.9 x 39.4 cm (11 x 15 1/2 in.)
The J. Paul Getty Museum, Los Angeles
93.GB.51



26. Francesco Primaticcio
Italian, 1504 - 1570
[Centaur and Lapith](#), about 1540
Red chalk
21.7 x 27.8 cm (8 9/16 x 10 15/16 in.)
The J. Paul Getty Museum, Los Angeles
89.GB.66



27. Giorgio Vasari
Italian, 1511 - 1574
[Bearded Man Filling a Glass](#), about 1544 - 1545
Pen and brown ink and brown wash over black chalk, heightened with white gouache, on blue paper
44.9 x 19.7 cm (17 11/16 x 7 3/4 in.)
The J. Paul Getty Museum, Los Angeles
94.GA.33.1



28. Giorgio Vasari
Italian, 1511 - 1574
[Youth Running](#), about 1544 - 1545
Pen and brown ink and brown wash over traces of black chalk, heightened with white gouache, on blue paper
44.9 x 19.7 cm (17 11/16 x 7 3/4 in.)
The J. Paul Getty Museum, Los Angeles
94.GA.33.2



29. Jacopo Tintoretto (Jacopo Robusti)
Italian, 1518/1519 - 1594
[Studies of a Statuette of Atlas \(recto\)](#); [Studies of a Statuette of Atlas and a Figure Praying \(verso\)](#), 1549
Black chalk with white chalk highlights
25.4 x 39.2 cm (10 x 15 7/16 in.)
The J. Paul Getty Museum, Los Angeles
89.GB.72



30. Francesco Salviati
Italian, 1510 - 1563
[Reclining Male Nude](#), about 1550
Red chalk with stumping, heightened with white
27 x 39.7 cm (10 5/8 x 15 5/8 in.)
The J. Paul Getty Museum, Los Angeles
86.GB.574



31. Lelio Orsi
Italian, 1511 - 1587
[Design for a Frieze with Worshipers Bringing Sacrificial Offerings](#), about 1555
Pen and brown ink and brown wash, heightened with white gouache, partially squared in black chalk, on ocher paper
22.9 x 41.1 cm (9 x 16 3/16 in.)
The J. Paul Getty Museum, Los Angeles
90.GG.132



32. Giorgio Vasari
Italian, 1511 - 1574
[Studies of a Male Nude, a Drapery, and a Hand](#), about 1555 - 1565
Red chalk
36 x 24.3 cm (14 3/16 x 9 9/16 in.)
The J. Paul Getty Museum, Los Angeles
92.GB.36



33. Bartolomeo Passarotti
Italian, 1529 - 1592
[Nude Studies](#), about 1570 - 1580
Pen and ink
29.5 x 23.5 cm (11 5/8 x 9 1/4 in.)
The J. Paul Getty Museum, Los Angeles
88.GA.109



34. Federico Zuccaro
Italian, about 1541 - 1609
[Allegories of Study and Intelligence Flanking the Zuccaro Emblem](#), about 1595
Pen and brown ink, brush with brown wash, over black chalk and touches of red chalk
17.6 x 42.5 cm (6 15/16 x 16 3/4 in.)
The J. Paul Getty Museum, Los Angeles
99.GA.6.20



35. Agostino Carracci
Italian, 1557 - 1602
[Study of Triton Blowing a Conch Shell \(recto\); Partial Study of an Arm \(verso\)](#), about 1600
Black and white chalk on blue paper (recto); black chalk (verso)
40.6 x 24.1 cm (16 x 9 1/2 in.)
The J. Paul Getty Museum, Los Angeles
84.GB.48



36. Domenico Maria Canuti
Italian, 1620 - 1684
[Sheet of Studies: A Seated Nude Man, A Youthful Head and a Caricature Head of a Man Playing a Pipe](#), about 1669 - 1671
Red chalk
39.5 x 27.6 cm (15 9/16 x 10 7/8 in.)
The J. Paul Getty Museum, Los Angeles
96.GB.331



37. Felice Giani
Italian, 1758 - 1823
[Allegory on the Life of Canova](#), about 1822 - 1823
Black chalk, brown ink, and watercolor
35.9 x 62.7 cm (14 1/8 x 24 11/16 in.)
The J. Paul Getty Museum, Los Angeles
92.GG.17



38. Cornelis Cort
Netherlandish, about 1533 - 1578
[Academy of fine arts], 1578
engraving
Sheet: 46 x 31 cm (18 1/8 x 12 3/16 in.)
Research Library, The Getty Research Institute, Los Angeles, California
P980001



39. Joseph Heintz the Elder
Swiss / German, 1564 - 1609
[The Toilet of Venus](#), 1594
Red and black chalk
21.6 x 15.1 cm (8 1/2 x 5 15/16 in.)
The J. Paul Getty Museum, Los Angeles
91.GB.66



40. Johann Heinrich Fuseli
Swiss, 1741 - 1825
[An Old Man Murdered by Three Younger Men](#), Early 1770s
Pen and black ink and grey wash
42.2 x 47.6 cm (16 5/8 x 18 3/4 in.)
The J. Paul Getty Museum, Los Angeles
84.GG.711



The J. Paul Getty Museum

December 16, 2008

Additional information about some of these works of art can be found by searching getty.edu at <http://www.getty.edu/art/gettyguide/>

© 2008 J. Paul Getty Trust