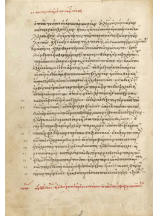


# The Book of Beasts: The Bestiary in the Medieval World

May 14 to August 18, 2019

The J. Paul Getty Museum at the Getty Center



1. Unknown Cretan artist

*Text Page*, 1510 - 1520

from Miscellany: Physiologus; other texts

Pen and red lead and iron gall inks, watercolors, tempera colors, and gold paint on paper bound between wood boards covered with probably original brown calf

Leaf: 21.7 × 15.6 cm (8 9/16 × 6 1/8 in.)

The J. Paul Getty Museum, Los Angeles

Ms. Ludwig XV 2, fol. 5v (83.MR.172.5v)



2. Unknown Cretan artist

*Crocodile*, 1510

from Miscellany: Physiologus; other texts

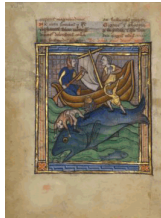
Pen and red lead and iron gall inks, watercolors, tempera colors, and gold paint on paper bound between wood boards covered with probably original brown calf

Leaf: 21.7 × 15.6 cm (8 9/16 × 6 1/8 in.)

The J. Paul Getty Museum, Los Angeles

<http://www.getty.edu/art/collection/objects/1435/>

Ms. Ludwig XV 2, fol. 6 (83.MR.172.6)



3. Unknown Franco-Flemish artist

*Whale*, about 1270

from Bestiary

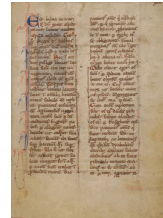
Tempera colors, gold leaf, and ink on parchment

Leaf: 19.1 × 14.3 cm (7 1/2 × 5 5/8 in.)

The J. Paul Getty Museum, Los Angeles

<http://www.getty.edu/art/collection/objects/1436/>

Ms. Ludwig XV 3, fol. 89v (83.MR.173.89v)



4. Unknown Franco-Flemish artist

*Decorated Text Page*, about 1270

from Bestiary

Tempera colors, gold leaf, and ink on parchment

Leaf: 19.1 × 14.3 cm (7 1/2 × 5 5/8 in.)

The J. Paul Getty Museum, Los Angeles

<http://www.getty.edu/art/collection/objects/1436/>

Ms. Ludwig XV 3, fol. 90 (83.MR.173.90)



5. Unknown Franco-Flemish artist  
*Legendary Peoples*, 1277 or after  
 from Bestiary  
 Tempera colors, pen and ink, gold leaf, and gold paint on parchment  
 Leaf: 23.3 × 16.4 cm (9 3/16 × 6 7/16 in.)  
 The J. Paul Getty Museum, Los Angeles  
<http://www.getty.edu/art/collection/objects/1437/>  
 Ms. Ludwig XV 4, fol. 117v (83.MR.174.117v)



6. Unknown Franco-Flemish artist  
*Legendary Peoples*, 1277 or after  
 from Bestiary  
 Tempera colors, pen and ink, gold leaf, and gold paint on parchment  
 Leaf: 23.3 × 16.4 cm (9 3/16 × 6 7/16 in.)  
 The J. Paul Getty Museum, Los Angeles  
<http://www.getty.edu/art/collection/objects/1437/>  
 Ms. Ludwig XV 4, fol. 118 (83.MR.174.118)



7. Unknown Italian artist  
 Fiore Furlan dei Liberi da Premariacco  
 Italian, about 1340/1350 - before 1450  
*Combat with Dagger and Staff*, about 1410  
 from *The Flower of Battle*  
 Tempera colors, gold leaf, silver leaf, and ink on parchment  
 Leaf: 27.9 × 20.6 cm (11 × 8 1/8 in.)  
 The J. Paul Getty Museum, Los Angeles  
<http://www.getty.edu/art/collection/objects/1443/>  
 Ms. Ludwig XV 13, fol. 31v (83.MR.183.31v)



8. Unknown Italian artist  
 Fiore Furlan dei Liberi da Premariacco  
 Italian, about 1340/1350 - before 1450  
*Aiming Points on the Body*, about 1410  
 from *The Flower of Battle*  
 Tempera colors, gold leaf, silver leaf, and ink on parchment  
 Leaf: 27.9 × 20.6 cm (11 × 8 1/8 in.)  
 The J. Paul Getty Museum, Los Angeles  
<http://www.getty.edu/art/collection/objects/1443/>  
 Ms. Ludwig XV 13, fol. 32 (83.MR.183.32)



9. Conrad Gessner  
 Swiss, 1516 - 1565  
 Monoceros, 1551  
 from *History of the Animals*  
 Hand-colored woodcut  
 Closed: 40 × 25.7 × 11 cm (15 3/4 × 10 1/8 × 4 5/16 in.)  
 The Getty Research Institute  
 84-B13226.v1



10. Joris Hoefnagel  
 Flemish / Hungarian, 1542 - 1600  
*Gillyflower, Insect, Germander, Almond, and Frog*, text, 1561-62; illumination, 1591-96  
 from *Model Book of Calligraphy*  
 Watercolors, gold and silver paint, and ink on parchment  
 Leaf: 16.6 × 12.4 cm (6 9/16 × 4 7/8 in.)  
 The J. Paul Getty Museum, Los Angeles  
<http://www.getty.edu/art/collection/objects/1487/>  
 Ms. 20, fol. 36 (86.MV.527.36)



11. Unknown French artist  
*Foxes and Their Ruses*, about 1430-40  
 from *Book of the Hunt*  
 Tempera colors, gold paint, silver paint, and gold leaf on parchment  
 Leaf: 26.4 × 18.4 cm (10 3/8 × 7 1/4 in.)  
 The J. Paul Getty Museum, Los Angeles  
<http://www.getty.edu/art/collection/objects/1499/>  
 Ms. 27, fol. 27 (87.MR.34.27)

12. Claire Owen  
 American, born 1948  
*Bear*, 1987  
 from *Seven Gods, Seven Demons: Bestiary*  
 Etchings with gouache  
 Sheet: 25 × 16.7 cm (9 13/16 × 6 9/16 in.)  
 The Getty Research Institute  
 88-B3946.1.1



13. Claire Owen  
 American, born 1948  
*Scorpion*, 1987  
 from *Seven Gods, Seven Demons: Bestiary*  
 Etchings with gouache  
 Sheet: 25 × 16.7 cm (9 13/16 × 6 9/16 in.) The Getty Research Institute  
 88-B3946.2.1

14. Jan Brueghel the Elder  
 Flemish, 1568 - 1625  
*The Entry of the Animals into Noah's Ark*, 1613  
 Oil on panel  
 Unframed: 54.6 × 83.8 cm (21 1/2 × 33 in.)  
 The J. Paul Getty Museum, Los Angeles  
<http://www.getty.edu/art/collection/objects/850/>  
 92.PB.82

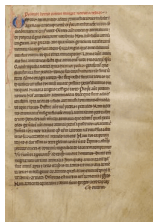
15. James Nares  
 British, born 1953  
*Unicorn*, 1990  
 in Bradford Morrow, *A Bestiary*  
 Color linocut  
 Closed: 38.5 × 28.4 × 5.3 cm (15 3/16 × 11 3/16 × 2 1/16 in.)  
 The Getty Research Institute  
 92-B17495



16. Hans Hoffmann  
German, about 1530 - 1591/1592  
*A Hare in the Forest*, About 1585  
Oil on panel  
Unframed (with radius of panel, right side): 62.2 × 78.4 cm (24 1/2 × 30 7/8 in.)  
The J. Paul Getty Museum, Los Angeles  
<http://www.getty.edu/art/collection/objects/130518/>  
2001.12



17. Unknown English artist  
*Adam Naming the Animals*, about 1250-60  
from Northumberland Bestiary  
Pen-and-ink drawings tinted with body color and translucent washes on parchment  
Leaf: 21 × 15.7 cm (8 1/4 × 6 3/16 in.)  
The J. Paul Getty Museum, Los Angeles  
<http://www.getty.edu/art/collection/objects/240115/>  
Ms. 100, fol. 5v (2007.16.5v)



18. Unknown English artist  
*Text Page*, about 1250 - 1260  
from Northumberland Bestiary  
Ink on parchment  
Leaf: 21 × 15.7 cm (8 1/4 × 6 3/16 in.)  
The J. Paul Getty Museum, Los Angeles  
<http://www.getty.edu/art/collection/objects/240115/>  
Ms. 100, fol. 6 (2007.16.6)



19. Unknown Flemish artist  
*Decorated Text Page*, about 1530  
from *Book of the Deeds of Jacques de Lalaing*  
Tempera colors, gold leaf, gold paint, and ink on parchment  
Leaf: 36.4 × 26.2 cm (14 5/16 × 10 5/16 in.)  
The J. Paul Getty Museum, Los Angeles, Acquired in honor of Thomas Kren  
<http://www.getty.edu/art/collection/objects/286914/>  
Ms. 114, fol. 112v (2016.7.112v)



20. Master of the Getty Lalaing  
Flemish, active about 1530  
*The Challenge at the Fountain of Tears*, about 1530  
from *Book of the Deeds of Jacques de Lalaing*  
Tempera colors, gold leaf, gold paint, and ink on parchment  
Leaf: 36.4 × 26.2 cm (14 5/16 × 10 5/16 in.)  
The J. Paul Getty Museum, Los Angeles, Acquired in honor of Thomas Kren  
<http://www.getty.edu/art/collection/objects/286914/>  
Ms. 114, fol. 113 (2016.7.113)



21. Unknown French or German artist  
Commentary by Rashi  
French, 1040 - 1105  
*Lion*, 1296  
from Rothschild Pentateuch  
Tempera colors, gold, and ink on parchment  
Leaf: 27.5 × 21 cm (10 13/16 × 8 1/4 in.)  
The J. Paul Getty Museum, Los Angeles, Acquired with the generous support of Jo Carole and Ronald S. Lauder  
<http://www.getty.edu/art/collection/objects/326409/>  
Ms. 116, fol. 32v (2018.43.32v)



22. Unknown French or German artist  
 Commentary by Rashi  
 French, 1040 - 1105  
*Text Page*, 1296  
 from Rothschild Pentateuch  
 Ink on parchment  
 Leaf: 27.5 × 21 cm (10 13/16 × 8 1/4 in.)  
 The J. Paul Getty Museum, Los Angeles, Acquired with  
 the generous support of Jo Carole and Ronald S. Lauder  
<http://www.getty.edu/art/collection/objects/326409/>  
 Ms. 116, fol. 33 (2018.43.33)



24. Jacob Meydenbach  
*Rhinoceros*, Germany, 1491  
 from *The Garden of Health*  
 Paper  
 Leaf: 29.8 × 20.3 cm (11 3/4 × 8 in.)  
 History and Special Collections for the Sciences, UCLA  
 Library Special Collections  
*Image: Library Special Collections, Charles E. Young  
 Research Library, UCLA*  
 EX.2019.2.2



26. Bartholomaeus Anglicus  
*Grid with Nine Animals*, France, about 1400-1415  
 from *On the Properties of Things*  
 Parchment  
 Leaf: 29 × 38 cm (11 7/16 × 14 15/16 in.)  
 The Huntington Library, Art Collections, and Botanical  
 Gardens, San Marino, CA, HM 27523  
[http://ds.lib.berkeley.edu/HM27523\\_43](http://ds.lib.berkeley.edu/HM27523_43)  
 EX.2019.2.4

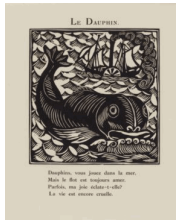


23. Unknown German artist  
*Lion Aquamanile (Water Vessel)*, about 1250  
 Brass  
 Object: H: 26.7 × W: 30.5 × D: 9.8 cm (10 1/2 × 12 × 3  
 7/8 in.)  
 Los Angeles County Museum of Art, Gift of Varya and  
 Hans Cohn  
*Image: www.lacma.org*  
<https://collections.lacma.org/node/172576>  
 EX.2019.2.1

25. Alexander Calder  
 American, 1898 - 1976  
*Siren*, 1955  
 In Richard Wilbur, *A Bestiary*  
 Offset lithograph  
 Closed: 8 × 17 × 13 cm (3 1/8 × 6 11/16 × 5 1/8 in.)  
 Library Special Collections, Charles E. Young Library, UCLA  
 © 2019 Calder Foundation, New York/Artist Rights Society (ARS),  
 New York  
 EX.2019.2.3



27. Jacob Meydenbach  
*Stag*, Germany, 1491  
 from *The Garden of Health*  
 Paper  
 Leaf: 29.8 × 20.3 cm (11 3/4 × 8 in.)  
 The Huntington Library, Art Collections, and Botanical  
 Gardens, San Marino, CA, RB 87504  
 EX.2019.2.5



28. Raoul Dufy  
French, 1877 - 1953  
*Dolphin*, 1911  
In Guillaume Apollinaire, *Le bestiaire, ou cortège d'Orphée*  
Woodcut  
Closed: 33 cm (13 in.)  
Special Research Collections, UCSB Library  
© 2019 Artist Rights Society (ARS), New York / ADAGP, Paris  
Image: Department of Special Research Collections,  
UCSB Library, University of California, Santa Barbara  
EX.2019.2.6



29. Unknown English artist  
*Elephant*, about 1300  
from Book of Hours  
Ink and pigments on parchment  
Leaf: 26.7 × 18.7 cm (10 1/2 × 7 3/8 in.)  
The Walters Art Museum, Baltimore, Maryland, W.102  
<http://www.thedigitalwalters.org/Data/WaltersManuscripts/html/W102/description.html>  
EX.2019.2.7



30. Unknown Venetian artist  
*Cheetah Aquamanile (Water Vessel)*, 1000-1300  
Bronze  
Object: H: 19.4 × W: 22.3 × D: 9.7 cm (7 5/8 × 8 3/4 × 3 13/16 in.)  
The Walters Art Museum, Baltimore, Maryland, 54.2434  
<https://art.thewalters.org/detail/28727/>  
EX.2019.2.8



31. Unknown German artist  
*Lion Aquamanile (Water Vessel)*, late 1200s or 1300s  
Brass  
Object: H: 23.2 × W: 27 × D: 12.9 cm (9 1/8 × 10 5/8 × 5 1/16 in.)  
The Walters Art Museum, Baltimore, Maryland, 53.25  
<https://art.thewalters.org/detail/19407/>  
EX.2019.2.9



32. Unknown French artist  
*Casket with Chivalric Scenes*, about 1330-50  
Ivory (elephant), modern iron mounts  
Object: H: 11.8 × W: 25.2 × D: 12.9 cm (4 5/8 × 9 15/16 × 5 1/16 in.)  
The Walters Art Museum, Baltimore, Maryland, 71.264  
<http://art.thewalters.org/detail/5780/>  
EX.2019.2.10



33. Jean Lurçat  
Edmond Variel  
Jules-Dominique Morniroli  
French, active in the 1900s  
*Bull*, 1950  
in Patrice de la Tour du Pin, *Le bestiaire fabuleux*  
Lithographs with ink and gouache  
Closed: 38.7 × 29 × 3 cm (15 1/4 × 11 7/16 × 1 3/16 in.)  
The Walters Art Museum, Baltimore, Maryland, 92.813  
Jean Lurçat Artwork © 2019 Artist Rights Society (ARS), New York/ADAGP, Paris  
<https://art.thewalters.org/detail/87716/bestiaire-fabuleux-2/>  
EX.2019.2.11





34. Unknown French artist  
*Fox; Ostrich; Hunter; Beaver*, about 1230-50  
 from Model Book  
 Parchment  
 Closed: 17 × 12.2 × 3.3 cm (6 11/16 × 4 13/16 × 1 5/16 in.)  
 Harvard University, Houghton Library, Gift of Philip Hofer  
 in honor of Roger S. Wieck, 1983 (MS Typ 101)  
[https://iif.harvard.edu/manifests/view/drs:53806727\\$1i](https://iif.harvard.edu/manifests/view/drs:53806727$1i)  
 EX.2019.2.12



36. Henri de Toulouse-Lautrec  
 French, 1864 - 1901  
*Stag*, 1879  
 in Jules Renard, *Histoires naturelles*, Paris, 1899  
 Transfer lithograph  
 Closed: 32.2 × 23.4 × 2 cm (12 11/16 × 9 3/16 × 13/16 in.)  
 Harvard University, Houghton Library, Bequest of Philip Hofer in honor of Roger S. Wieck, 1984 (f Typ 815.99.7375 A)  
 EX.2019.2.14



38. Unknown French artist  
*Capital with Lions*, about 1125-50  
 Marble  
 Object: H: 25.4 × W: 27.3 × D: 27.3 cm (10 × 10 3/4 × 10 3/4 in.)  
 Glencairn Museum, Bryn Athyn, Pennsylvania  
 EX.2019.2.16



35. Manuel Philēs and Angelos Vergēkios (author)  
*Wolf; Bear*, France, 1565  
 from *Verses on Characteristics of Animals*  
 Parchment  
 Leaf: 24 cm (9 7/16 in.)  
 Harvard University, Houghton Library, Bequest of Philip Hofer, 1984 (MS Typ 222)  
 EX.2019.2.13



37. Unknown French artist  
*Capital with Lions*, about 1125-50  
 Marble  
 Object: H: 24.8 × W: 28.4 × D: 29 cm (9 3/4 × 11 3/16 × 11 7/16 in.)  
 Glencairn Museum, Bryn Athyn, Pennsylvania  
 EX.2019.2.15



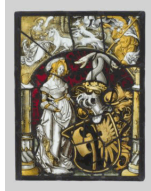
39. Unknown Iranian artist  
*Goats*, about 1300  
 from Ibn Bakhtīshū', *On the Usefulness of Animals*  
 Opaque watercolor and ink on paper  
 Leaf: 23.7 × 17.5 cm (9 5/16 × 6 7/8 in.)  
 The Art Institute of Chicago, Lucy Maud Buckingham Collection, 1935.166  
<http://www.artic.edu/aic/collections/artwork/21462>  
 EX.2019.2.17



40. Unknown Iranian artist  
*Viper*, about 1300  
 from Ibn Bakhtīshū, *On the Usefulness of Animals*  
 Opaque watercolor and ink on paper  
 Leaf: 24.3 × 18.9 cm (9 9/16 × 7 7/16 in.)  
 The Art Institute of Chicago, Lucy Maud Buckingham  
 Collection, 1924.1346  
<http://www.artic.edu/aic/collections/artwork/14545>  
 EX.2019.2.18



41. Unknown Indian artist  
*The Greedy Dog*, 1596  
 from *The Lights of Canopus*  
 Opaque watercolor and shell gold on paper  
 Image: 19.8 × 12.1 cm (7 13/16 × 4 3/4 in.)  
 The Art Institute of Chicago, Lucy Maud Buckingham  
 Collection, 1919.951  
<https://www.artic.edu/artworks/76881/the-greedy-dog>  
 EX.2019.2.19



42. Unknown German or Swiss artist  
*Panel with Heraldry and the Hunt of the Unicorn*, about  
 1515  
 White glass, silver stain, and pot metal  
 Object: H: 39.1 × W: 28.9 cm (15 3/8 × 11 3/8 in.)  
 The Cleveland Museum of Art, Purchase from the J. H.  
 Wade Fund 1954.149  
 Image © The Cleveland Museum of Art  
<http://www.clevelandart.org/art/1954.149>  
 EX.2019.2.20



43. Unknown Italian artist  
*Plaque with the Crucifixion and a Pelican Nest*, about  
 1400-1425  
 Verre églomisé (reverse gilded glass, engraved and  
 painted)  
 Object: H: 19.4 × W: 9.4 × D: 0.4 cm (7 5/8 × 3 11/16 ×  
 3/16 in.)  
 The Cleveland Museum of Art, John L. Severance Fund  
 1978.41  
 Image © The Cleveland Museum of Art  
<http://www.clevelandart.org/art/1978.41>  
 EX.2019.2.21

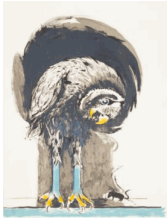


44. Unknown German or Austrian artist  
*Altar Cross*, about 1300-1310  
 Gilt copper, champlevé enamel, gemstones, on wood  
 core  
 Object (without base): H: 50.2 × W: 39.4 cm (19 3/4 ×  
 15 1/2 in.)  
 The Cleveland Museum of Art, Purchase from the J. H.  
 Wade Fund 1942.1091  
 Image © The Cleveland Museum of Art  
<http://www.clevelandart.org/art/1942.1091>  
 EX.2019.2.24



45. Unknown French artist  
*Casket Panel with Chivalric Scenes*, about 1330-50 or  
 later  
 Ivory  
 Object: H: 9.8 × W: 25.9 × D: 1 cm (3 7/8 × 10 3/16 ×  
 3/8 in.)  
 The Cleveland Museum of Art, John L. Severance Fund  
 1978.39.b  
 Image © The Cleveland Museum of Art  
<http://www.clevelandart.org/art/1978.39>  
 EX.2019.2.25





46. Graham Sutherland  
British, 1903 - 1980  
*Bird and Mouse*, 1968  
from *A Bestiary and Some Correspondences*  
Color lithograph  
Image: 62.9 × 49.5 cm (24 3/4 × 19 1/2 in.)  
Minneapolis Institute of Art, Gift of Mr. and Mrs. Patrick Butler  
© Estate of Graham Sutherland  
<https://collections.artsimia.org/art/54851/bird-and-mouse-graham-sutherland>  
EX.2019.2.26



47. Unknown Belgian artist  
*Tapestry with Flowers and Animals*, about 1530-45  
Wool and silk  
Object (irregular): H: 352.7 × W: 400.7 cm (11 ft. 6 7/8 in. × 13 ft. 1 3/4 in.)  
Minneapolis Institute of Art, Gift of Mrs. C. J. Martin in memory of Charles Jairus Martin  
Photo: Minneapolis Institute of Art  
<https://collections.artsimia.org/art/531/>  
EX.2019.2.27



48. Unknown German artist  
*Unicorn Aquamanile (Water Vessel)*, about 1425-50  
Copper alloy  
Object: H: 39.4 × W: 29.2 × D: 11.3 cm (15 1/2 × 11 1/2 × 4 7/16 in.)  
The Metropolitan Museum of Art, Gift of Irwin Untermyer, 1964 (64.101.1493)  
Image: [www.metmuseum.org](http://www.metmuseum.org)  
<https://www.metmuseum.org/art/collection/search/468634>  
EX.2019.2.28



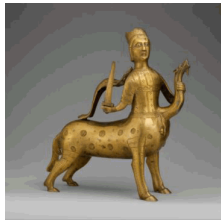
49. Unknown German or Tyrolean artist  
*Parade Saddle with Chivalric Scenes*, about 1450  
Bone, polychromy, wood, leather, iron alloy  
Object: H: 41.9 × W: 43.2 × D: 54.8 cm (16 1/2 × 17 × 21 9/16 in.)  
The Metropolitan Museum of Art, Rogers Fund, 1904 (04.3.250)  
Image: [www.metmuseum.org](http://www.metmuseum.org)  
<https://www.metmuseum.org/art/collection/search/21991>  
EX.2019.2.29



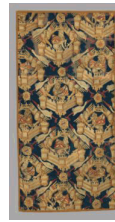
50. Unknown German artist  
*Plate with the Hunt of the Unicorn*, 1400s  
Brass  
Object: H: 29.4 × W: 7.9 cm (11 9/16 × 3 1/8 in.)  
The Metropolitan Museum of Art, Gift of Irwin Untermyer, 1964 (64.101.1520)  
Image: [www.metmuseum.org](http://www.metmuseum.org)  
<https://www.metmuseum.org/art/collection/search/468660>  
EX.2019.2.30



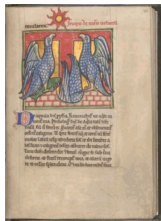
51. Unknown Netherlandish artist  
*Plate with Pelicans*, 1400s  
Brass  
Object: H: 7.6 × Diam.: 50.5 cm (3 × 19 7/8 in.)  
The Metropolitan Museum of Art, Gift of Irwin Untermyer, 1964 (64.101.1498)  
Image: [www.metmuseum.org](http://www.metmuseum.org)  
<https://www.metmuseum.org/art/collection/search/468639>  
EX.2019.2.31



52. Unknown German artist  
*Centaur Aquamanile (Water Vessel)*, 1200 - 1225  
 Copper alloy  
 Object: H: 36.5 × W: 34.3 × D: 12.7 cm (14 3/8 × 13 1/2 × 5 in.)  
 The Metropolitan Museum of Art, Rogers Fund, 1910  
 (10.37.2)  
 Image: [www.metmuseum.org](http://www.metmuseum.org)  
<https://www.metmuseum.org/art/collection/search/463419>  
 EX.2019.2.32



53. Unknown South Netherlandish artist  
*Tapestry with the Arms of Beaufort, Comminges, and Turenne*, about 1350 - 1375  
 Wool  
 Object: H: 226.1 × W: 113 cm (7 ft. 5 in. x 3 ft. 8 1/2 in.)  
 The Metropolitan Museum of Art, Rogers Fund, 1946  
 (46.175)  
 Image: [www.metmuseum.org](http://www.metmuseum.org)  
<https://www.metmuseum.org/art/collection/search/468153>  
 EX.2019.2.34



54. Unknown English artist  
*Leucrota; Eagle*, about 1185  
 from Workshop Bestiary  
 Vellum  
 Leaf: 21.5 × 15.5 cm (8 7/16 × 6 1/8 in.)  
 Morgan Library & Museum, New York. Purchased by J. Pierpont Morgan (1837-1913) in 1902  
<https://www.themorgan.org/collection/workshop-bestiary/humbs>  
 EX.2019.2.35



55. Unknown German artist  
*Initial R: The Resurrection; Border with a Lion Breathing on Its Cubs*, before 1381  
 from a Missal  
 Vellum  
 Leaf: 38.9 × 28.5 cm (15 5/16 × 11 1/4 in.)  
 Morgan Library & Museum, New York. Gift of the Fellows, 1958  
 EX.2019.2.36



56. Unknown German artist  
*Initial S: The Presentation in the Temple; Border with Reynard Deceiving Geese*, before 1381  
 from a Missal  
 Vellum  
 Leaf: 38.9 × 28.5 cm (15 5/16 × 11 1/4 in.)  
 Morgan Library & Museum, New York. Gift of the Fellows, 1958  
<http://www.themorgan.org/manuscript/159600>  
 EX.2019.2.37



57. Unknown Austrian artist  
*Christ Appearing to Mary Magdalene with Related Scenes*, about 1450-75  
 from Ulrich von Lilienfeld, *Concordance of Charity*  
 Vellum  
 Leaf: 35 × 26.5 cm (13 3/4 × 10 7/16 in.)  
 Morgan Library & Museum, New York. Gift of Clara S. Peck, 1983  
<http://ica.themorgan.org/manuscript/description/143600>  
 EX.2019.2.38



58. Unknown Flemish artist  
*Tapestry with the Triumph of Fortitude*, about 1535  
 Wool and silk  
 Object: H: 443.2 × W: 566.4 cm (174 1/2 × 223 in.)  
 Fine Arts Museums of San Francisco, Gift of The William Randolph Hearst Foundation  
<https://art.famsf.org/triumph-fortitude-triumph-seven-virtues-series-1957126>  
 EX.2019.2.39



59. Unknown Flemish artist  
*Tapestry with the Triumph of Justice*, about 1535  
 Wool and silk  
 Object: H: 439.4 × W: 551.2 cm (14 ft. 5 in. x 18 ft. 1 in.)  
 Fine Arts Museums of San Francisco, Gift of The William Randolph Hearst Foundation  
<https://art.famsf.org/triumph-justice-triumph-seven-virtues-series-1957125>  
 EX.2019.2.40



60. Unknown French artist  
*Lion; Antelope*, about 975-1025  
 from *Physiologus*  
 Parchment  
 Leaf: 25.5 × 17.5 cm (10 1/16 × 6 7/8 in.)  
 Royal Library of Belgium  
 Copyright Royal Library of Belgium, Ms. 10066-77, fol. 140v  
<https://uurl.kbr.be/1332800>  
 EX.2019.2.41



61. Unknown French artist  
*Alexander Exploring Underwater*, about 1290-1300  
 from *Romance of Alexander*  
 Parchment  
 Leaf: 22.6 × 17.4 cm (8 7/8 × 6 7/8 in.)  
 Royal Library of Belgium  
 Copyright Royal Library of Belgium, Ms. 11040, fol. 70v  
 EX.2019.2.42



62. Unknown English artist  
*Manticore; Parandrus; Fox*, about 1400-1450  
 from *Bestiary of Anne Walshe*  
 Parchment  
 Leaf: 21 × 13.5 cm (8 1/4 × 5 5/16 in.)  
 The Royal Library, Copenhagen  
 Image: The Royal Danish Library, Copenhagen, GKS 1633 4°  
<http://www.kb.dk/permalink/2006/manus/221/>  
 EX.2019.2.43



63. Unknown English artist  
*Lions*, about 1300  
 from Philippe de Thaon, *Bestiary*  
 Parchment  
 Leaf: 17 × 10 cm (6 11/16 × 3 15/16 in.)  
 The Royal Library, Copenhagen  
 Image: The Royal Danish Library, Copenhagen, GKS 1633 4°  
<http://www.kb.dk/permalink/2006/manus/225/eng/>  
 EX.2019.2.44



64. Unknown English artist  
*Bonnacon*, about 1200-1220  
 from Bestiary  
 Parchment  
 Leaf: 28.6 × 19 cm (11 1/4 × 7 1/2 in.)  
 The Syndics of Cambridge University Library, Ms. li.4.26  
*Reproduced by the kind permission of the Syndics of Cambridge University Library/All rights reserved (MS li.4.26)*  
 EX.2019.2.45



66. Unknown English artist  
*Beaver; Ibex; Hyena; Bonnacon; Ape; Satyr; Stag*, about 1300-1310  
 from Peterborough Psalter and Bestiary  
 Parchment  
 Leaf: 34.7 × 23.7 cm (13 11/16 × 9 5/16 in.)  
 The Parker Library, Corpus Christi College, Cambridge  
<https://parker.stanford.edu/parker/catalog/gs233db8425>  
 EX.2019.2.47



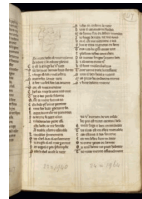
68. Unknown French artist  
*Initial C: Ape; Initial O: Coot; Initial E: Panther*, 1323  
 from Guillaume le Clerc, *Bestiary*  
 Parchment  
 Leaf: 29 × 20.1 cm (11 7/16 × 7 15/16 in.)  
 The Syndics of the Fitzwilliam Museum, University of Cambridge  
*Reproduction by permission of the Syndics of The Fitzwilliam Museum, Cambridge*  
<http://webapps.fitzmuseum.cam.ac.uk/explorer/index.php?oid=169648>  
 EX.2019.2.49



65. Unknown English artist  
*Sea Creatures; Serpents*, about 1230  
 from Bestiary  
 Parchment  
 Leaf: 28.6 × 19 cm (11 1/4 × 7 1/2 in.)  
 The Syndics of Cambridge University Library, Ms. Kk.4.25  
*Reproduced by the kind permission of the Syndics of Cambridge University Library/All rights reserved (MS Kk.4.25)*  
 EX.2019.2.46



67. Unknown English artist  
*Sea Creatures*, about 1220-30  
 from Bestiary  
 Parchment  
 Leaf: 26.7 × 18 cm (10 1/2 × 7 1/16 in.)  
 The Syndics of the Fitzwilliam Museum, University of Cambridge  
*Reproduction by permission of the Syndics of The Fitzwilliam Museum, Cambridge*  
[https://www.fitzmuseum.cam.ac.uk/pharos/collection\\_pages/middle\\_pages/Ms.254/FRM\\_TXT\\_SE-Ms.254.html](https://www.fitzmuseum.cam.ac.uk/pharos/collection_pages/middle_pages/Ms.254/FRM_TXT_SE-Ms.254.html)  
 EX.2019.2.48



69. Unknown English artist  
*Ape; Coot*, about 1280-1300  
 from Guillaume le Clerc, *Bestiary*  
 Parchment  
 Leaf: 26.4 × 17.5 cm (10 3/8 × 6 7/8 in.)  
 The Syndics of the Fitzwilliam Museum, University of Cambridge  
*Reproduction by permission of the Syndics of The Fitzwilliam Museum, Cambridge*  
 EX.2019.2.50



70. Jila Peacock  
Iranian, born 1948  
*Falcon of the Path*, 2004  
Silkscreen  
Sheet: 55.6 × 38.5 cm (21 7/8 × 15 3/16 in.)  
The Syndics of the Fitzwilliam Museum, University of Cambridge  
© Jila Peacock UK  
*Reproduction by permission of the Syndics of The Fitzwilliam Museum, Cambridge*  
<http://data.fitzmuseum.cam.ac.uk/id/object/185935>  
EX.2019.2.51



71. Unknown English artist  
*Mandrake; Amos with Goats; Tiger; Pard; Lynx; Griffin; Bonnacon; Satyr*, about 1260-70  
from Bestiary  
Parchment  
Leaf: 26.1 × 18.2 cm (10 1/4 × 7 3/16 in.)  
Master and Fellows of Trinity College, Cambridge  
<http://trin-sites-pub.trin.cam.ac.uk/james/viewpage.php?index=1159>  
EX.2019.2.53



72. Unknown German artist  
*Fennel; Comfrey; Parsley; Basil*, about 1350-1400  
from Herbal  
Paper  
Leaf: 22.5 × 16 cm (8 7/8 × 6 5/16 in.)  
Master and Fellows of Trinity College, Cambridge  
<http://trin-sites-pub.trin.cam.ac.uk/james/viewpage.php?index=671>  
EX.2019.2.54



73. Unknown English artist  
*Manticore; Parandrus; Yale*, about 1200-1210  
from Bestiary  
Parchment  
Leaf: 22 × 16 cm (8 11/16 × 6 5/16 in.)  
The British Library  
Image: GRANGER  
[http://www.bl.uk/manuscripts/FullDisplay.aspx?ref=Royal\\_MS\\_12\\_c\\_xix](http://www.bl.uk/manuscripts/FullDisplay.aspx?ref=Royal_MS_12_c_xix)  
EX.2019.2.55



74. Unknown English artist  
*Elephants*, about 1230-50  
from Rochester Bestiary  
Parchment  
Leaf: 30 × 21.5 cm (11 13/16 × 8 7/16 in.) The British Library  
Image: GRANGER  
[http://www.bl.uk/manuscripts/FullDisplay.aspx?ref=Royal\\_MS\\_12\\_F\\_XIII](http://www.bl.uk/manuscripts/FullDisplay.aspx?ref=Royal_MS_12_F_XIII)  
EX.2019.2.57



75. Unknown English artist  
*Bee; Peridexion Tree; Serpent; Dragon*, about 1240-50  
from Bestiary  
Parchment  
Leaf: 28 × 16.5 cm (11 × 6 1/2 in.)  
The British Library  
Image: GRANGER  
[http://www.bl.uk/manuscripts/FullDisplay.aspx?ref=Harley\\_MS\\_3244](http://www.bl.uk/manuscripts/FullDisplay.aspx?ref=Harley_MS_3244)  
EX.2019.2.58





76. Unknown French artist  
*Lizard; Serra; Viper*, about 1250-75  
 from *Dicta Chrysostomi*  
 Parchment  
 Leaf: 26.5 × 18 cm (10 7/16 × 7 1/16 in.)  
 The British Library  
 Image: GRANGER  
<http://www.bl.uk/catalogues/illuminatedmanuscripts/record.asp?MSID=6512>  
 EX.2019.2.59



78. Unknown French artist  
*Judgement of Solomon; Ziz*, about 1280  
 from Hebrew Miscellany  
 Parchment  
 Leaf: 16 × 12 cm (6 5/16 × 4 3/4 in.)  
 The British Library  
 Image: GRANGER  
<https://www.bl.uk/catalogues/illuminatedmanuscripts/record.asp?MSID=19212&CollID=27&NStart=11639/>  
 EX.2019.2.62



80. Unknown German artist  
*Draughts Piece with Animals*, late 1100s  
 Ivory  
 Object: Diam.: 6 cm (2 3/8 in.)  
 On loan from the Trustees of the British Museum  
 Image © The Trustees of the British Museum  
[http://britishmuseum.org/research/collection\\_online/collection\\_object\\_details.aspx?objectId=48680&partId=1&searchText=1892,0801.33](http://britishmuseum.org/research/collection_online/collection_object_details.aspx?objectId=48680&partId=1&searchText=1892,0801.33)  
 EX.2019.2.65



77. Unknown Scottish artist  
*Heraldic Animals*, about 1494  
 from Adam Loutfut, *Deeds of Armory*  
 Parchment  
 Leaf: 25.5 × 20 cm (10 1/16 × 7 7/8 in.)  
 The British Library  
 Image: GRANGER  
<https://www.bl.uk/catalogues/illuminatedmanuscripts/record.asp?MSID=5040>  
 EX.2019.2.60



79. Unknown German artist  
*Draughts Piece with Animals*, late 1100s  
 Ivory  
 Object: Diam.: 6 cm (2 3/8 in.)  
 On loan from the Trustees of the British Museum  
 Image © The Trustees of the British Museum  
[http://britishmuseum.org/research/collection\\_online/collection\\_object\\_details.aspx?objectId=48680&partId=1&searchText=1892,0801.33](http://britishmuseum.org/research/collection_online/collection_object_details.aspx?objectId=48680&partId=1&searchText=1892,0801.33)  
 EX.2019.2.64



81. Unknown German artist  
*Draughts Piece with Animals*, late 1100s  
 Ivory  
 Object: Diam.: 6 cm (2 3/8 in.)  
 On loan from the Trustees of the British Museum  
 Image © The Trustees of the British Museum  
[http://britishmuseum.org/research/collection\\_online/collection\\_object\\_details.aspx?objectId=48680&partId=1&searchText=1892,0801.33](http://britishmuseum.org/research/collection_online/collection_object_details.aspx?objectId=48680&partId=1&searchText=1892,0801.33)  
 EX.2019.2.66





82. Unknown German artist  
*Draughts Piece with Animals*, late 1100s  
 Ivory  
 Object: Diam.: 6 cm (2 3/8 in.)  
 On loan from the Trustees of the British Museum  
 Image © The Trustees of the British Museum  
[http://britishmuseum.org/research/collection\\_online/collection\\_object\\_details.aspx?objectId=48680&partId=1&searchText=1892,0801.33](http://britishmuseum.org/research/collection_online/collection_object_details.aspx?objectId=48680&partId=1&searchText=1892,0801.33)  
 EX.2019.2.67



83. Unknown German artist  
*Draughts Piece with Animals*, late 1100s  
 Ivory  
 Object: Diam.: 6 cm (2 3/8 in.)  
 On loan from the Trustees of the British Museum  
 Image © The Trustees of the British Museum  
[http://britishmuseum.org/research/collection\\_online/collection\\_object\\_details.aspx?objectId=48680&partId=1&searchText=1892,0801.33](http://britishmuseum.org/research/collection_online/collection_object_details.aspx?objectId=48680&partId=1&searchText=1892,0801.33)  
 EX.2019.2.68



84. Unknown German artist  
*Draughts Piece with Animals*, late 1100s  
 Ivory  
 Object: Diam.: 6 cm (2 3/8 in.)  
 On loan from the Trustees of the British Museum  
 Image © The Trustees of the British Museum  
[http://britishmuseum.org/research/collection\\_online/collection\\_object\\_details.aspx?objectId=48680&partId=1&searchText=1892,0801.33](http://britishmuseum.org/research/collection_online/collection_object_details.aspx?objectId=48680&partId=1&searchText=1892,0801.33)  
 EX.2019.2.69



85. Unknown German artist  
*Draughts Piece with Animals*, late 1100s  
 Ivory  
 Object: Diam.: 6 cm (2 3/8 in.)  
 On loan from the Trustees of the British Museum  
 Image © The Trustees of the British Museum  
[http://britishmuseum.org/research/collection\\_online/collection\\_object\\_details.aspx?objectId=48680&partId=1&searchText=1892,0801.33](http://britishmuseum.org/research/collection_online/collection_object_details.aspx?objectId=48680&partId=1&searchText=1892,0801.33)  
 EX.2019.2.70



86. Unknown German artist  
*Draughts Piece with Animals*, late 1100s  
 Ivory  
 Object: Diam.: 6 cm (2 3/8 in.)  
 On loan from the Trustees of the British Museum  
 Image © The Trustees of the British Museum  
[http://britishmuseum.org/research/collection\\_online/collection\\_object\\_details.aspx?objectId=48680&partId=1&searchText=1892,0801.33](http://britishmuseum.org/research/collection_online/collection_object_details.aspx?objectId=48680&partId=1&searchText=1892,0801.33)  
 EX.2019.2.71



87. Unknown German artist  
*Draughts Piece with Animals*, late 1100s  
 Ivory  
 Object: Diam.: 6 cm (2 3/8 in.)  
 On loan from the Trustees of the British Museum  
 Image © The Trustees of the British Museum  
[http://britishmuseum.org/research/collection\\_online/collection\\_object\\_details.aspx?objectId=48680&partId=1&searchText=1892,0801.33](http://britishmuseum.org/research/collection_online/collection_object_details.aspx?objectId=48680&partId=1&searchText=1892,0801.33)  
 EX.2019.2.72



88. Unknown German artist  
*Draughts Piece with Animals*, late 1100s  
 Ivory  
 Object: Diam.: 6 cm (2 3/8 in.)  
 On loan from the Trustees of the British Museum  
 Image © The Trustees of the British Museum  
[http://britishmuseum.org/research/collection\\_online/collection\\_object\\_details.aspx?objectId=48680&partId=1&searchText=1892,0801.33](http://britishmuseum.org/research/collection_online/collection_object_details.aspx?objectId=48680&partId=1&searchText=1892,0801.33)  
 EX.2019.2.73



89. Unknown German artist  
*Draughts Piece with Animals*, late 1100s  
 Ivory  
 Object: Diam.: 6 cm (2 3/8 in.)  
 On loan from the Trustees of the British Museum  
 Image © The Trustees of the British Museum  
[http://britishmuseum.org/research/collection\\_online/collection\\_object\\_details.aspx?objectId=48680&partId=1&searchText=1892,0801.33](http://britishmuseum.org/research/collection_online/collection_object_details.aspx?objectId=48680&partId=1&searchText=1892,0801.33)  
 EX.2019.2.74



90. Unknown German artist  
*Draughts Piece with Animals*, late 1100s  
 Ivory  
 Object: Diam.: 6 cm (2 3/8 in.)  
 On loan from the Trustees of the British Museum  
 Image © The Trustees of the British Museum  
[http://britishmuseum.org/research/collection\\_online/collection\\_object\\_details.aspx?objectId=48680&partId=1&searchText=1892,0801.33](http://britishmuseum.org/research/collection_online/collection_object_details.aspx?objectId=48680&partId=1&searchText=1892,0801.33)  
 EX.2019.2.75



91. Unknown German artist  
*Draughts Piece with Animals*, late 1100s  
 Ivory  
 Object: Diam.: 6 cm (2 3/8 in.)  
 On loan from the Trustees of the British Museum  
 Image © The Trustees of the British Museum  
[http://britishmuseum.org/research/collection\\_online/collection\\_object\\_details.aspx?objectId=48680&partId=1&searchText=1892,0801.33](http://britishmuseum.org/research/collection_online/collection_object_details.aspx?objectId=48680&partId=1&searchText=1892,0801.33)  
 EX.2019.2.76



92. Unknown German artist  
*Draughts Piece with Animals*, late 1100s  
 Ivory  
 Object: Diam.: 6 cm (2 3/8 in.)  
 On loan from the Trustees of the British Museum  
 Image © The Trustees of the British Museum  
[http://britishmuseum.org/research/collection\\_online/collection\\_object\\_details.aspx?objectId=48680&partId=1&searchText=1892,0801.33](http://britishmuseum.org/research/collection_online/collection_object_details.aspx?objectId=48680&partId=1&searchText=1892,0801.33)  
 EX.2019.2.77



93. Unknown Belgian or French artist  
*Brooch with Pelicans*, late 1400s  
 Gold, ruby, diamond  
 Object: H: 3 × W: 3.6 × D: 1.3 cm (1 3/16 × 1 7/16 × 1/2 in.)  
 On loan from the Trustees of the British Museum  
 Image © The Trustees of the British Museum  
[http://www.britishmuseum.org/research/collection\\_online/collection\\_object\\_details.aspx?objectId=43587&partId=1](http://www.britishmuseum.org/research/collection_online/collection_object_details.aspx?objectId=43587&partId=1)  
 EX.2019.2.78



94. Unknown English artist  
*Ibex Horn ("Griffin Claw")*, 1500s or earlier (horn), about 1575-1625 (mount)  
 Bone with a silver mount  
 Object: L: 71.1 cm (28 in.)  
 On loan from the Trustees of the British Museum  
 Image © The Trustees of the British Museum  
[http://www.britishmuseum.org/research/collection\\_online/collection\\_object\\_details.aspx?objectId=44328&partId=1&searchText=OA.24](http://www.britishmuseum.org/research/collection_online/collection_object_details.aspx?objectId=44328&partId=1&searchText=OA.24)  
 EX.2019.2.79



95. Unknown English or French artist  
*Comb with Animals*, about 1170-80  
 Ivory  
 Object: H: 11.4 × W: 10.7 × D: 1.8 cm (4 1/2 × 4 3/16 × 3/4 in.)  
 On loan from the Trustees of the British Museum  
 Image © The Trustees of the British Museum  
[http://britishmuseum.org/research/collection\\_online/collection\\_object\\_details.aspx?objectId=43561&partId=1&searchText=1916,0403.1](http://britishmuseum.org/research/collection_online/collection_object_details.aspx?objectId=43561&partId=1&searchText=1916,0403.1)  
 EX.2019.2.80

96. Unknown German artist  
*Embroidery with the Hunt of the Unicorn*, about 1370-1400  
 Linen  
 Object: H: 33 × W: 69.9 cm (13 × 27 1/2 in.)  
 Victoria and Albert Museum, London  
<http://collections.vam.ac.uk/item/O364036/>  
 EX.2019.2.82

97. Unknown Dutch artist  
*Misericord with a Dragon*, 1400s  
 Oak  
 Object: H: 31 × W: 70 × D: 10.5 cm (12 3/16 × 27 9/16 × 4 1/8 in.)  
 Victoria and Albert Museum, London. Given by Mr J. H. Fitzhenry Esq.  
<https://collections.vam.ac.uk/item/O370596>  
 EX.2019.2.83

98. Unknown English artist  
*Misericord with a Lion*, about 1419  
 Oak  
 Object: H: 25.4 × W: 63.5 × D: 14 cm (10 × 25 × 5 1/2 in.)  
 Victoria and Albert Museum, London  
<http://collections.vam.ac.uk/item/O131754/>  
 EX.2019.2.84

99. Unknown German artist  
*Candlestick in the Form of an Elephant Carrying a Howdah*, 1200-1400  
 Bronze  
 Object: H: 16.8 × W: 5.3 × D: 10.3 cm (6 5/8 × 2 1/16 × 4 1/16 in.)  
 Victoria and Albert Museum, London  
<http://collections.vam.ac.uk/item/O69137/>  
 EX.2019.2.85

100. Unknown English artist

*Narwhal Tusk ("Unicorn Horn")*, about 1125-50

Narwhal horn

Object: Diam.: 4.5 × L: 117 cm (1 3/4 × 46 1/16 in.)

Victoria and Albert Museum, London. Purchased with funds from the Capt. H. B. Murray Bequest

<http://collections.vam.ac.uk/item/O96516/>

EX.2019.2.86



102. Unknown English artist

*Legendary Peoples*, about 1275-90

from Bestiary

Parchment

Closed: 21.5 × 16 cm (8 7/16 × 6 5/16 in.)

The Dean and Chapter of Westminster

Copyright: Dean and Chapter of Westminster, London

EX.2019.2.88



104. Unknown English artist

*Lions*, about 1120-50

from Bestiary

Parchment

Leaf: 27.3 × 17 cm (10 3/4 × 6 11/16 in.)

The Bodleian Libraries, University of Oxford, MS. Laud

Misc. 247, fols. 139v-140r

<https://digital.bodleian.ox.ac.uk/inquire/p/9a086667-538f-41da-aa47-a424dc1cbeff>

EX.2019.2.90

101. Unknown English or French artist

*Section of a Staff with Birds, Land Animals, and Serpents*, about 1170-80

Ivory

Object: H: 15.2 × Diam: 2.2 cm (6 × 7/8 in.)

Victoria and Albert Museum, London

<http://collections.vam.ac.uk/item/O40562/>

EX.2019.2.87



103. Unknown English artist

*Unicorn; Lynx*, about 1210-20

from Ashmole Bestiary

Parchment

Leaf: 27.6 × 18.2 cm (10 7/8 × 7 3/16 in.)

The Bodleian Libraries, University of Oxford, MS.

Ashmole 1511, fols. 14v-15r

<https://digital.bodleian.ox.ac.uk/inquire/p/09d418c1-b23e-4cd3-9333-1ef34be5f2fc>

EX.2019.2.89



105. Unknown English artist

*Siren and Centaur*, about 1225-50

from Bestiary

Parchment

Leaf: 24 × 17.5 cm (9 7/16 × 6 7/8 in.)

The Bodleian Libraries, University of Oxford, MS. Bodl. 602,

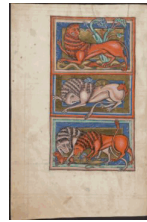
fols. 9v-10r

<https://digital.bodleian.ox.ac.uk/inquire/p/05f663d9-1fcb-4750-9ce3-03d0eb687648>

EX.2019.2.91



106. Unknown English artist  
*Wild Goats; Monoceros; Bear*, about 1300  
 from Bestiary  
 Parchment  
 Leaf: 24.3 × 17.5 cm (9 9/16 × 6 7/8 in.)  
 The Bodleian Libraries, University of Oxford, MS. Douce 151, fols. 16v-17r  
<https://digital.bodleian.ox.ac.uk/inquire/p/00e9ebb1-2bb4-4e61-b0b0-cd0de6d96978>  
 EX.2019.2.92



107. Unknown English artist  
*Lions*, about 1250  
 from Bestiary  
 Parchment  
 Leaf: 29.6 × 19 cm (11 5/8 × 7 1/2 in.)  
 The Bodleian Libraries, University of Oxford, MS. Bodl. 764, fols. 2v-3r  
<https://digital.bodleian.ox.ac.uk/inquire/p/861ad634-1d6a-4673-9096-8f2120ecf9f4>  
 EX.2019.2.93



108. Unknown Iranian ? artist  
*Elephants; Rabbits; Elephant with Quadrupeds; Dromedary*, about 1560  
 from *Epistles of the Brethren of Purity*  
 Parchment  
 Leaf: 30.6 × 20 cm (12 1/16 × 7 7/8 in.)  
 The Bodleian Libraries, University of Oxford, MS. Laud. Or. 260, fols. 123v-124r  
 EX.2019.2.94



109. Unknown German artist  
*Lynx; Griffin; Elephant*, about 1375-1400  
 from Salvatorberg Bestiary  
 Parchment  
 Closed: 22.7 × 17 × 3.5 cm (8 15/16 × 6 11/16 × 1 3/8 in.)  
 The Wormsley Library, England  
 EX.2019.2.96



110. Unknown French artist  
*Antelope; Unicorn*, about 1270-75  
 from Bestiary  
 Parchment  
 Leaf: 23 × 16 cm (9 1/16 × 6 5/16 in.)  
 Douai, Bibliothèque Marceline Desbordes-Valmore  
 Clichés: IRHT-CNRS, Douai, Bibliothèque Marceline Desbordes-Valmore, Ms. 711, fol. 2r  
[http://www.bl.uk/manuscripts/Viewer.aspx?ref=add\\_ms\\_11283\\_fs001r](http://www.bl.uk/manuscripts/Viewer.aspx?ref=add_ms_11283_fs001r)  
 EX.2019.2.97

111. Unknown French artist  
*Lion; Antelope; Serra*, 1268  
 from Bestiary  
 Parchment  
 Leaf: 32.8 × 24.5 cm (12 15/16 × 9 5/8 in.)  
 Bibliothèque nationale de France  
<http://archivesetmanuscripts.bnf.fr/ark:/12148/cc84176k>  
 EX.2019.2.100

112. Unknown French artist

*Crane; Kite; Partridge*, about 1230

from *Aviary and bestiary*

Parchment

Leaf: 30.6 × 21 cm (12 1/16 × 8 1/4 in.)

Bibliothèque nationale de France

<http://archivesetmanuscripts.bnf.fr/ark:/12148/cc60312z>

EX.2019.2.102

113. Unknown English artist

*Moses at the Burning Bush and Israelites Worshipping the*

*Golden Calf; Hyena*, about 1270

from Guillaume le Clerc, *Bestiary*

Parchment

Leaf: 22 × 14.8 cm (8 11/16 × 5 13/16 in.)

Bibliothèque nationale de France

[http://mandragore.bnf.fr/jsp/switch.jsp?](http://mandragore.bnf.fr/jsp/switch.jsp?division=Mix&cote=Fran%E7ais+14969)

[division=Mix&cote=Fran%E7ais+14969](http://mandragore.bnf.fr/jsp/switch.jsp?division=Mix&cote=Fran%E7ais+14969)

EX.2019.2.103



114. Attributed to Richard de Montbaston

*Unicorn; Panther*, France, about 1325-50

from Richard de Fournival, *Bestiary of Love*

Parchment

Leaf: 19 × 12.5 cm (7 1/2 × 4 15/16 in.)

Bibliothèque nationale de France

<http://gallica.bnf.fr/ark:/12148/btv1b8452195w>

EX.2019.2.104

115. Unknown French artist

*Reynard Disguised as a Doctor before King Noble*, after 1292

from Jacquemart Gielée, *New Adventures of Reynard*

Parchment

Leaf: 28.4 × 20 cm (11 3/16 × 7 7/8 in.)

Bibliothèque nationale de France

<http://archivesetmanuscripts.bnf.fr/ark:/12148/cc501641>

EX.2019.2.105

116. Master of François de Rohan

French

*Beaver as an Allegory of Peace*, 1530

from *The Flower of Virtue*

Tempera colors on parchment

Leaf: 21.6 × 15.5 cm (8 1/2 × 6 1/8 in.)

Bibliothèque nationale de France

[http://archivesetmanuscripts.bnf.fr/ark:/12148/](http://archivesetmanuscripts.bnf.fr/ark:/12148/cc48036q)

[cc48036q](http://archivesetmanuscripts.bnf.fr/ark:/12148/cc48036q)

EX.2019.2.106



117. Brunetto Latini

Italian, about 1220 - 1294

*Lions*, about 1280-90

from *Book of Treasure* (text in French)

Parchment

Leaf: 34.8 × 24.6 cm (13 11/16 × 9 11/16 in.)

Bibliothèque nationale de France

[http://archivesetmanuscripts.bnf.fr/ark:/12148/](http://archivesetmanuscripts.bnf.fr/ark:/12148/cc50817x)

[cc50817x](http://archivesetmanuscripts.bnf.fr/ark:/12148/cc50817x)

EX.2019.2.107

118. Mateo Prunes

*Nautical Chart*, Spain, 1586

Parchment

Unframed (irregular): 117 × 70 cm (46 1/16 × 27 9/16 in.)

Bibliothèque nationale de France

[http://manuscripts.kb.nl/search/manuscript/extended/](http://manuscripts.kb.nl/search/manuscript/extended/page/1/shelfmark/10+B+25)

[page/1/shelfmark/10+B+25](http://manuscripts.kb.nl/search/manuscript/extended/page/1/shelfmark/10+B+25)

EX.2019.2.108

April 25, 2019

Additional information about some of these works of art can be found by searching [getty.edu](http://www.getty.edu/art/collection/) at <http://www.getty.edu/art/collection/>

© 2019 J. Paul Getty Trust





119. Thomas of Cantimpre  
1201 - 1272  
*Quadrupeds*, France, about 1280  
from *On the Nature of Things*  
Parchment  
Leaf: 24.1 × 17 × 6.2 cm (9 1/2 × 6 11/16 × 2 7/16 in.)  
Bibliothèque de Valenciennes  
Image © Médiathèque de Valenciennes  
[https://patrimoine-numerique.ville-valenciennes.fr/ark:/29755/B\\_596066101\\_MS\\_0320](https://patrimoine-numerique.ville-valenciennes.fr/ark:/29755/B_596066101_MS_0320)  
EX.2019.2.109



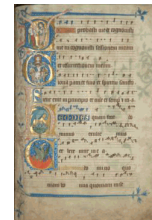
121. Unknown German artist  
*Tapestry with Pelicans*, about 1500  
Linen and wool  
Object: H: 65 × W: 233 cm (25 9/16 × 91 3/4 in.)  
Kloster Lüne, Lüneburg, Germany  
Image: Ulrich Loeper CC Klosterkammer Hannover  
EX.2019.2.111



123. Unknown Flemish artist  
*Quadrupeds*, about 1450  
from Jacob van Maerlant, *The Flower of Nature*  
Parchment  
Leaf: 29 × 21 cm (11 7/16 × 8 1/4 in.)  
The Hague, Koninklijke Bibliotheek, National Library of the Netherlands, KB KW 76 E 4  
<http://manuscripts.kb.nl/search/manuscript/extended/page/1/shelfmark/76+E+4>  
EX.2019.2.115



120. Unknown German artist  
*Embroidery with Saint Bartholomew, Lions, and Pelicans*, 1492  
Linen and wool  
Object: H: 91 × W: 514 cm (2 ft. 11 in. x 8 ft. 10 3/8 in.)  
Kloster Lüne, Lüneburg, Germany  
Photo: Ulrich Loeper CC Klosterkammer Hannover  
EX.2019.2.110



122. Unknown German artist  
*Initial R: The Resurrection; Initial D: Christ Appearing to Mary Magdalene; Initial G: The Throne of Grace; Initial H: The Pelican; Initial C: Phoenix; Initial P: Sacrificial Lamb; Initial T: Lion; Initial P: Eagle; Initial I: Christ Leading the Elect to Paradise; Initial I: Tree of Life; Initial S: Christ Risen from the Tomb*, about 1300  
from Codex Gisle  
Parchment  
Leaf: 35.5 × 26 cm (14 × 10 1/4 in.)  
Bistumsarchiv Osnabrück  
Photo: Hartmut Wachsmann  
EX.2019.2.113



124. Unknown French and Belgian artist  
*Griffin*, 1460  
from Lambert, canon of Saint Omer, *Book of Flowers*  
Parchment  
Leaf: 40.8 × 28.6 cm (16 1/16 × 11 1/4 in.)  
The Hague, Koninklijke Bibliotheek, National Library of the Netherlands, KB KW 72 A 23  
<http://manuscripts.kb.nl/search/manuscript/extended/page/1/shelfmark/72+A+23>  
EX.2019.2.116



125. Unknown Flemish artist  
*Legendary Peoples*, about 1350  
 from Jacob van Maerlant, *The Flower of Nature*  
 Parchment  
 Leaf: 27.8 × 20.8 cm (10 15/16 × 8 3/16 in.)  
 The Hague, Koninklijke Bibliotheek, National Library of  
 the Netherlands, KB KW KA 16  
<http://manuscripts.kb.nl/search/manuscript/extended/page/1/shelfmark/KA+16>  
 EX.2019.2.117



126. Unknown French artist  
*Cinnamon Bird; Hercinia; Hoopoe; Pelican*, about 1450  
 from Bestiary  
 Parchment  
 Leaf: 25.2 × 18 cm (9 15/16 × 7 1/16 in.)  
 The Hague, House of the Book | Museum Meermano,  
 MMW 10 B 25  
<http://manuscripts.kb.nl/search/manuscript/extended/page/1/shelfmark/10+B+25>  
 EX.2019.2.118



127. Master François (artist)  
 Saint Augustine (author)  
 Raoul de Presles (translator)  
*Romans with Animals as the Seven Deadly Sins*, France,  
 about 1475  
 from *The City of God*  
 Parchment  
 Leaf: 44 × 30 cm (17 5/16 × 11 13/16 in.)  
 The Hague, House of the Book | Museum Meermano,  
 MMW 10 A 11  
<http://manuscripts.kb.nl/search/manuscript/extended/page/1/shelfmark/10+A+11>  
 EX.2019.2.119



128. Ronald King  
 British, born 1932  
*Elephant*, 2013  
 in Richard Price, *Going, going...gone!* (Circle Press)  
 Blind-embossed color print  
 Closed: 29 × 29 cm (11 7/16 × 11 7/16 in.)  
 The Hague, House of the Book | Museum Meermano,  
 MMW pp eng Circle 2013.01  
 Artwork © 2013 Ron King / The poem "Elephant" is © Richard  
 Price (Circle Press). Photo: Hugh Gilbert  
 EX.2019.2.120



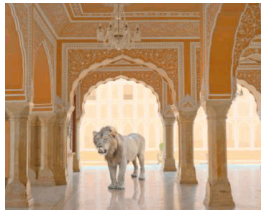
129. Marja Scholtens  
 Dutch, active 1990s - 2000s  
*Siren*, 2009  
 in Guillaume Apollinaire, translated by J. P. Guépin,  
*Le bestiaire/Het Dierenboek*  
 Color woodcut and linocut  
 Closed: 29 × 30 cm (11 7/16 × 11 13/16 in.)  
 The Hague, House of the Book | Museum Meermano,  
 MMW pp ned Klaproos 2009.01  
 © Marja Scholtens, De Klaproos / Le Coquelicot  
 EX.2019.2.121



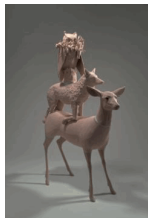
130. Unknown English artist  
*Christ in Majesty; Adam Naming the Animals*, about 1200  
 from Aberdeen Bestiary  
 Parchment  
 Leaf: 30.2 × 21 cm (11 7/8 × 8 1/4 in.)  
 On loan from the University of Aberdeen, Scotland  
 Image © University of Aberdeen  
<https://www.abdn.ac.uk/bestiary/>  
 EX.2019.2.122



131. Unknown Swiss artist  
*Tapestry with the Hunt of the Unicorn*, about 1480  
 Wool, silk, linen, gold and silver wire  
 Object: H: 104 × W: 380 cm (3 ft. 4 15/16 in. × 12 ft. 5 5/8 in.)  
 Swiss National Museum, Zurich  
 Image: Swiss National Museum, LM-1959, DIG-4882  
[https://www.nationalmuseum.ch/sammlung\\_online/?lauftext=&sID=39&order=DESC&offset=300&numOf=30&detailID=98292#98292](https://www.nationalmuseum.ch/sammlung_online/?lauftext=&sID=39&order=DESC&offset=300&numOf=30&detailID=98292#98292)  
 EX.2019.2.124



133. Karen Knorr  
 American, born 1954  
*The Last Lion*, Diwan-I-Khas, Jaipur City Palace, Jaipur, 2013  
 Pigment print  
 Image: 50 × 63.5 cm (19 11/16 × 25 in.)  
 Karen Knorr and Danziger Gallery  
 © Karen Knorr  
 EX.2019.2.126



135. Janet Macpherson  
 Canadian, born 1974  
*Sit, Stand, Kneel*, 2019  
 Slip-cast porcelain, paper clay, gold lustre, and plaster  
 Object: H: 129.5 × W: 94 × D: 45.7 cm (4 ft. 3 in. × 3 ft. 1 in. × 1 ft. 6 in.)  
 Collection of the artist, created with support from the Canadian Council for the Arts  
 © Janet Macpherson  
 EX.2019.2.128



132. Unknown Western European artist  
*Sculpture with Pelicans*, 1500s  
 Painted linden and willow wood  
 Object: H: 29.5 × W: 27 × D: 26 cm (11 5/8 × 10 5/8 × 10 1/4 in.)  
 Swiss National Museum, Zurich  
 Image: Swiss National Museum, LM-3972, DIG-10683  
[https://www.nationalmuseum.ch/sammlung\\_online/?lauftext=&sID=21&offset=210&numOf=30&detailID=331655#331655](https://www.nationalmuseum.ch/sammlung_online/?lauftext=&sID=21&offset=210&numOf=30&detailID=331655#331655)  
 EX.2019.2.125



134. Damien Hirst  
 British, born 1965  
*Skull of a Unicorn*, 2010  
 Gold and silver  
 Object: H: 129.3 × W: 22.3 × D: 68.8 cm (50 7/8 × 8 3/4 × 27 1/16 in.)  
 Private Collection  
 Artwork © Damien Hirst and Science Ltd. All rights reserved / DACS, London / ARS, NY 2019  
 Image © Damien Hirst and Science Ltd. All rights reserved, DACS / Artimage 2019  
 EX.2019.2.127

136. Unknown English artist  
*Misericord with and Eagle*, about 1419  
 Oak  
 Object: H: 22.8 × W: 57.3 × D: 13 cm (9 × 22 9/16 × 5 1/8 in.)  
 Victoria and Albert Museum, London  
<http://collections.vam.ac.uk/item/O131752/>  
 EX.2019.2.129



137. Pablo Picasso  
 Spanish, 1881 - 1973  
 Georges-Louis Leclerc, comte de Buffon  
 French, 1707 - 1788  
*Eagle*, 1936; Paris, 1942  
 Sugar-lift aquatint with drypoint  
 Sheet: 36.5 × 27.9 cm (14 3/8 × 11 in.)  
 Minneapolis Institute of Art, Gift of Bruce B. Dayton  
 © 2019 Estate of Pablo Picasso / Artist Rights Society (ARS),  
 New York  
<https://collections.artsmia.org/art/6091/histoire-naturelle-eaux-fortes-originales-pour-les-textes-de-buffon-pablo-picasso>  
 EX.2019.2.130



138. Walton Ford  
 American, born 1960  
*Grifo de California*, 2017  
 Watercolor, gouache and ink on paper  
 Unframed: 153 × 212.7 cm (60 1/4 × 83 3/4 in.)  
 Collection of Larry Gagosian  
 © Walton Ford  
 Photo: Christopher Burke. Courtesy Gagosian  
<https://gagosian.com/artists/walton-ford/>  
 EX.2019.2.134



139. Kate Clark  
 American, born 1974  
*Pray*, 2012  
 Antelope hide, horns, foam, pins, thread, rubber eyes  
 Object: H: 91.4 × W: 83.8 × D: 43.2 cm (36 × 33 × 17 in.)  
 Chet Robachinski & Jerry Slipman  
 © Kate Clark  
<https://www.kateclark.com/new-page-35/>  
 EX.2019.2.135



140. Karen Knorr  
 American, born 1954  
*The Search for Sattva*, Ahhichatragarh Fort, Nagaur, 2014  
 Pigment print  
 Image: 50 × 63.5 cm (19 11/16 × 25 in.)  
 Karen Knorr and Danziger Gallery  
 © Karen Knorr  
 EX.2019.2.137



141. Unknown French artist  
*Panel from a Painted Ceiling*, about 1225-75  
 Tempera colors on oak  
 Object (approx.): H: 91.4 × W: 426.7 cm (3 ft. × 14 ft.)  
 Musée de La Cour d'Or - Metz Métropole  
 Image © Laurianne Kieffer - Musée de La Cour d'Or - Metz Métropole  
 EX.2019.2.98



142. Unknown French artist  
*Panel from a Painted Ceiling*, about 1225-75  
 Tempera colors on oak  
 Object (approx.): H: 91.4 × W: 426.7 cm (3 ft. × 14 ft.)  
 Musée de La Cour d'Or - Metz Métropole  
 Image © Laurianne Kieffer - Musée de La Cour d'Or - Metz Métropole  
 EX.2019.2.99



The J. Paul Getty Museum

April 25, 2019

Additional information about some of these works of art can be found by searching getty.edu at <http://www.getty.edu/art/collection/>

© 2019 J. Paul Getty Trust