

Balthazar: A Black African King in Medieval and Renaissance Art

November 19, 2019 to February 16, 2020
The J. Paul Getty Museum at the Getty Center



1. *Alabastron (Oil Jar)*
East Greek, about 425-400 BC
Alabaster
Object: H: 23.7 × Diam.: 6.8 cm (9 5/16 × 2 11/16 in.)
The J. Paul Getty Museum, Villa Collection, Malibu, California
71.AI.205



2. *Bowl*
Qift (Koptos), Egypt, 300-100 BC
Agate
Object: H: 3.8 × Diam.: 9.1 cm, Weight: 0.508 kg (1 1/2 × 3 9/16 in., 1.12 lb.)
The J. Paul Getty Museum, Villa Collection, Malibu, California
72.AI.38



3. Unknown North African artist
Sūrat al-An'ām (The Cattle) 6: 108–9, 800s
Pen and ink, gold paint, and tempera colors on parchment
Leaf: 14.4 × 20.8 cm (5 11/16 × 8 3/16 in.) The J. Paul Getty Museum, Los Angeles
Ms. Ludwig X 1, fol. 4v (83.MM.118.3.4.verso)



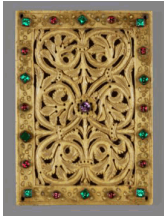
4. Unknown North African artist
One Side of a Bifolium (fols. 9 and 4v), 9th century
Bifolium from a Fragmentary Qur'an (fols. 4 and 9)
Pen and ink, gold paint, and tempera colors on parchment
The J. Paul Getty Museum, Los Angeles
Ms. Ludwig X 1 (3), verso (83.MM.118.3.verso)



5. Unknown North African artist
Sūrat al-An'ām (The Cattle) 6: 108–9, 800s
 Pen and ink, gold paint, and tempera colors on parchment
 Leaf: 14.4 × 20.8 cm (5 11/16 × 8 3/16 in.)
 The J. Paul Getty Museum, Los Angeles
 Ms. Ludwig X 1, fol. 5 (83.MM.118.4.5.recto)



6. Unknown North African artist
One Side of a Bifolium (fols. 5 and 8v), 9th century
 Bifolium from a Fragmentary Qur'an (fols. 5 and 8)
 Pen and ink, gold paint, and tempera colors on parchment
 The J. Paul Getty Museum, Los Angeles
 Ms. Ludwig X 1 (4), recto (83.MM.118.4.recto)



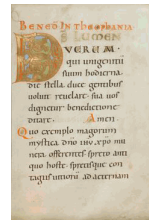
7. Unknown Carolingian artist
Plaque, late 800s
 Ivory, gold leaf, brass, and glass from a lectionary binding
 Object: 14.9 × 10.5 cm (5 7/8 × 4 1/8 in.)
 The J. Paul Getty Museum, Los Angeles
 Ms. Ludwig IV 1, cover.a.ivory (83.MD.73.cover.a.ivory)



8. Unknown Egyptian artist
Tiraz (Inscribed Textile) Fragment, 1000s
 Silk tapestry on plain linen
 Unframed: 28.3 × 12.7 cm (11 1/8 × 5 in.)
 Los Angeles County Museum of Art, Mr. and Mrs. Allan C. Balch Fund
 Image: www.lacma.org
 L.2019.14



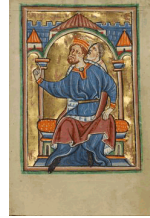
9. Unknown Ottonian artist
The Adoration of the Magi, about 1030–40
 from Benedictional
 Tempera colors, gold leaf, and ink on parchment
 Leaf: 23.2 × 16 cm (9 1/8 × 6 5/16 in.)
 The J. Paul Getty Museum, Los Angeles
 Ms. Ludwig VII 1, fol. 25v (83.MI.90.25v)



10. Unknown Ottonian artist
Decorated Initial D, about 1030 - 1040
 from Benedictional
 Tempera colors, gold leaf, and ink on parchment
 Leaf: 23.2 × 16 cm (9 1/8 × 6 5/16 in.)
 The J. Paul Getty Museum, Los Angeles
 Ms. Ludwig VII 1, fol. 26 (83.MI.90.26)



11. Unknown English artist
The Magi Approaching Herod, about 1190-1200 and about 1480-90
 from Illustrated Life of Christ, with devotional supplements
 Tempera colors and gold leaf on parchment
 Leaf: 11.9 × 17 cm (4 11/16 × 6 11/16 in.)
 The J. Paul Getty Museum, Los Angeles
 Ms. 101, fol. 35v (2008.3.35v)



12. Unknown English artist
The Magi Approaching Herod, about 1190-1200 and about 1480-90
 from Illustrated Life of Christ, with devotional supplements
 Tempera colors and gold leaf on parchment
 Leaf: 11.9 × 17 cm (4 11/16 × 6 11/16 in.)
 The J. Paul Getty Museum, Los Angeles
 Ms. 101, fol. 36 (2008.3.36)



13. Unknown Ethiopian artist
Cross, about 1200-1400
 Bronze
 Object: H: 25.4 × W: 10.2 × D: 2.5 cm (10 × 4 × 1 in.)
 Los Angeles County Museum of Art. Purchased with funds provided by the Ancient Art Deaccession Fund and the Decorative Arts and Design Deaccession fund in honor of the museum's 50th anniversary
Image: www.lacma.org
 L.2019.13



14. Unknown Spanish artist
Initial Q: A Woman with Bread Loaves; Initial S: The Baptism of a Muslim, about 1290-1310
 from Feudal Customs of Aragon
 Tempera colors, gold leaf, and ink on parchment
 Leaf: 36.5 × 24 cm (14 3/8 × 9 7/16 in.)
 The J. Paul Getty Museum, Los Angeles
 Ms. Ludwig XIV 6, fol. 242v (83.MQ.165.242v)



15. Unknown French artist
Virgin and Child, about 1300-1350
 Ivory and silver
 Object: H: 19.4 × W: 7 × D: 5.1 cm (7 5/8 × 2 3/4 × 2 in.)
 Fine Arts Museums of San Francisco, Gift of Mrs. Herbert Fleishhacker
 L.2019.16

16. Unknown Chinese artist
Wan (Bowl) with Lotus Petals and Floral Scrolls, about 1368-1450
 Wheel-thrown porcelain with blue painted decoration under clear glaze
 Object: H: 10.3 × Diam.: 20.8 cm (4 1/16 × 8 3/16 in.)
 Los Angeles County Museum of Art. The Ernest Larsen Blanck Memorial Collection
Image: www.lacma.org
 L.2019.20



17. Unknown Armenian artist
The Magi Approaching Herod, about 1190-1200 and about 1480-90
from Gospel Book
Black ink and watercolors on paper bound between wood boards covered with dark brown kidskin
Leaf: 24 × 16.5 cm (9 7/16 × 6 1/2 in.)
The J. Paul Getty Museum, Los Angeles
Ms. Ludwig II 6, fol. 5v (83.MB.70.5v)



18. Unknown Armenian artist
The Nativity and the Adoration of the Magi, 1386
from Gospel Book
Black ink and watercolors on paper bound between wood boards covered with dark brown kidskin
Leaf: 24 × 16.5 cm (9 7/16 × 6 1/2 in.)
The J. Paul Getty Museum, Los Angeles
Ms. Ludwig II 6, fol. 6 (83.MB.70.6)



19. Unknown German artist
Moses Defeating the Moors, about 1400-1410
from World Chronicle
Tempera colors, gold, silver paint, and ink on parchment
Leaf: 33.5 × 23.5 cm (13 3/16 × 9 1/4 in.)
The J. Paul Getty Museum, Los Angeles
Ms. 33, fol. 66v (88.MP.70.66v)



20. Master of the Harvard Hannibal
French, active Paris, France, 1415 - about 1430
The Adoration of the Magi, about 1420-30
from Book of Hours
Tempera, gold paint, gold leaf, and silver paint on parchment
Leaf: 17.9 × 13 cm (7 1/16 × 5 1/8 in.)
The J. Paul Getty Museum, Los Angeles
Ms. 19, fol. 50 (86.ML.481.50)



21. Unknown Italian artist
The Adoration of the Magi, about 1460
from Book of Hours
Tempera colors, gold, and ink on parchment
Leaf: 17.1 × 12.1 cm (6 3/4 × 4 3/4 in.)
The J. Paul Getty Museum, Los Angeles
Ms. Ludwig IX 12, fol. 256v (83.ML.108.256v)



22. Franco dei Russi
Italian, active about 1453 - 1482
Initial E: The Adoration of the Magi, 1470s
Cutting from a choir book
Tempera and gold on parchment
Leaf: 15 × 15.7 cm (5 7/8 × 6 3/16 in.)
The J. Paul Getty Museum, Los Angeles
Ms. 83, recto (2003.114.recto)



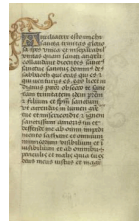
23. Georges Trubert
French, active Provence, France 1469 - 1508
The Adoration of the Magi, about 1480-90
from Book of Hours
Tempera colors, gold leaf, gold and silver paint, and ink on parchment
Leaf: 11.4 × 8.6 cm (4 1/2 × 3 3/8 in.)
The J. Paul Getty Museum, Los Angeles
Ms. 48, fol. 59 (93.ML.6.59)



24. Andrea Mantegna
Italian, about 1431 - 1506
The Adoration of the Magi, about 1495-1505
Distemper on linen
Unframed (Image size): 48.6 × 65.6 cm (19 1/8 × 25 13/16 in.)
The J. Paul Getty Museum, Los Angeles
85.PA.417



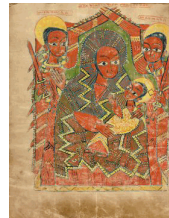
25. Master of Cardinal Bourbon
French, about 1480 - 1500
The Mocking of Christ, about 1500
from Poncher Hours
Tempera colors, ink and gold on parchment
Leaf: 13.3 × 8.7 cm (5 1/4 × 3 7/16 in.)
The J. Paul Getty Museum, Los Angeles
Ms. 109, fol. 60v (2011.40.60v)



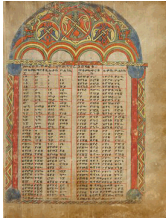
26. Unknown French artist
Decorated Text Page, about 1500
from Poncher Hours
Tempera colors, ink and gold on parchment
Leaf: 13.3 × 8.7 cm (5 1/4 × 3 7/16 in.)
The J. Paul Getty Museum, Los Angeles
Ms. 109, fol. 61 (2011.40.61)



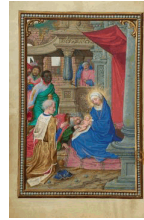
27. Unknown Italian artist
Ducat, 1500s
Gold
Object (approx.): Diam.: 2.5 × D: 0.1 cm (Diam.: 1 × D: 1/16 in.)
The J. Paul Getty Museum, Los Angeles
93.NJ.53



28. Unknown Ethiopian artist
The Virgin and Child with the Archangels Michael and Gabriel, about 1504-5
from Gospel Book
Tempera on parchment
Leaf: 34.5 × 26.5 cm (13 9/16 × 10 7/16 in.)
The J. Paul Getty Museum, Los Angeles
Ms. 102, fol. 19v (2008.15.19v)



29. Unknown Ethiopian artist
The Adoration of the Magi, about 1480-90
from Gospel Book
Tempera on parchment
Leaf: 34.5 × 26.5 cm (13 9/16 × 10 7/16 in.)
The J. Paul Getty Museum, Los Angeles
Ms. 102, fol. 20 (2008.15.20)



30. Simon Bening
Flemish, about 1483 - 1561
The Adoration of the Magi, about 1525-30
from Prayer Book of Cardinal Albrecht of Brandenburg
Tempera colors, gold paint, and gold leaf on parchment
Leaf: 16.8 × 11.4 cm (6 5/8 × 4 1/2 in.)
The J. Paul Getty Museum, Los Angeles
Ms. Ludwig IX 19, fol. 36v (83.ML.115.36v)



31. Simon Bening
Flemish, about 1483 - 1561
Border with the Queen of Sheba before King Solomon,
about 1525-30
from Prayer Book of Cardinal Albrecht of Brandenburg
Tempera colors, gold paint, and gold leaf on parchment
Leaf: 16.8 × 11.4 cm (6 5/8 × 4 1/2 in.)
The J. Paul Getty Museum, Los Angeles
Ms. Ludwig IX 19, fol. 37 (83.ML.115.37)



32. Unknown maker, Façon de Venise
possibly the Glashütte of Wolfgang Viti
Austrian, active 1534 - 1540
Lidded Vessel, about 1536-40
Free-blown colorless glass with applied decoration,
gilding, and cold painting
Object (with lid): H: 19.1 cm (H: 7 1/2 in.)
The J. Paul Getty Museum, Los Angeles
84.DK.548



33. Heinrich Bünting
German, 1545 - 1606
Map of Africa, 1597
Woodcut
Closed: 34.1 × 22 × 8.6 cm (13 7/16 × 8 11/16 ×
3 3/8 in.)
Getty Research Institute
44-2.bw



34. Peter Paul Rubens
Flemish, 1577 - 1640
Head Study for Balthazar, about 1609-11
Oil on paper laid down on panel
Sheet: 54 × 39.3 cm (21 1/4 × 15 1/2 in.)
The J. Paul Getty Museum, Los Angeles
2018.48