

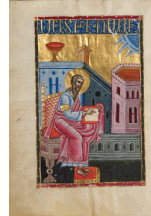
Artful Words: Calligraphy in Illuminated Manuscripts

December 18, 2018 to April 7, 2019

The J. Paul Getty Museum at the Getty Center



1. Unknown Carolingian artist
Decorated Initial V
Decorated Initial E, about 845
 Leaf from a Bible
 Iron gall ink on parchment with tempera
 Leaf (cut in two, lengthwise): 45.1 × 25.1 cm (17 3/4 × 9 7/8 in.)
 The J. Paul Getty Museum, Los Angeles
 Ms. Ludwig I 1, leaf 7 (83.MA.50.7.recto)



2. Malnazar
 Armenian, active about 1630s
 and Aghap'ir
 Armenian, active about 1630s
Saint Matthew, 1637 - 1638
 from Bible
 Tempera colors, gold paint, and gold leaf on parchment
 Leaf: 25.2 × 18.3 cm (9 15/16 × 7 3/16 in.)
 The J. Paul Getty Museum, Los Angeles
 Ms. Ludwig I 14, fol. 495v (83.MA.63.495v)



3. Malnazar
 Armenian, active about 1630s
 and Aghap'ir
 Armenian, active about 1630s
Decorated Incipit Page, about 1637-38
 from Bible
 Tempera colors, gold paint, and gold leaf on parchment
 Leaf: 25.2 × 18.3 cm (9 15/16 × 7 3/16 in.)
 The J. Paul Getty Museum, Los Angeles
 Ms. Ludwig I 14, fol. 496 (83.MA.63.496)



4. Malnazar
 Armenian, active about 1630s
 and Aghap'ir
 Armenian, active about 1630s
Saint Luke, 1637 - 1638
 from Bible
 Tempera colors, gold paint, and gold leaf on parchment
 Leaf: 25.2 × 18.3 cm (9 15/16 × 7 3/16 in.)
 The J. Paul Getty Museum, Los Angeles
 Ms. Ludwig I 14, fol. 522v (83.MA.63.522v)



5. Malnazar
Armenian, active about 1630s
and Aghap'ir
Armenian, active about 1630s
Decorated Incipit Page, about 1637-38
from Bible
Tempera colors, gold paint, and gold leaf on parchment
Leaf: 25.2 × 18.3 cm (9 15/16 × 7 3/16 in.)
The J. Paul Getty Museum, Los Angeles
Ms. Ludwig I 14, fol. 523 (83.MA.63.523)



7. Jacobellus of Salerno
Italian, active about 1270
Initial M: Two Apostles, about 1270
from Gradual
Tempera colors, gold leaf, and ink on parchment
Leaf: 46.4 × 32.1 cm (18 1/4 × 12 5/8 in.)
The J. Paul Getty Museum, Los Angeles
Ms. Ludwig VI 1, fol. 160 (83.MH.84.160)



9. Unknown North African artist
Decorated Text Pages (Surat al-An'am: 6:119-121), 9th century CE / second century AH
Pen and ink, gold paint, and tempera colors on parchment
Leaf: 14.4 × 20.8 cm (5 11/16 × 8 3/16 in.)
The J. Paul Getty Museum, Los Angeles
Ms. Ludwig X 1, fol. 8.recto (83.MM.118.4.8.recto)



6. Jacobellus of Salerno
Italian, active about 1270
Signed Page of Music, about 1270
from Gradual
Ink on parchment
Leaf: 46.4 × 32.1 cm (18 1/4 × 12 5/8 in.)
The J. Paul Getty Museum, Los Angeles
Ms. Ludwig VI 1, fol. 159v (83.MH.84.159v)



8. Unknown Carolingian artist
Decorated Initial Q, third quarter of the 9th century
Leaf from a Psalter
Iron gall and red lead (minimum) inks applied with pen and brush on parchment
Leaf: 30.3 × 21.3 cm (11 15/16 × 8 3/8 in.)
The J. Paul Getty Museum, Los Angeles
Ms. Ludwig VIII 1, verso (83.MK.92.verso)



10. Unknown North African artist
One Side of a Bifolium (fols. 8 and 5v), 9th century
Bifolium from a Fragmentary Qur'an (fols. 5 and 8)
Pen and ink, gold paint, and tempera colors on parchment
The J. Paul Getty Museum, Los Angeles
Ms. Ludwig X 1 (4) verso (83.MM.118.4.verso)



11. Unknown North African artist
Decorated Text Pages (Surat al-An'am: 6:119-121), 9th century CE / second century AH
 Pen and ink, gold paint, and tempera colors on parchment
 Leaf: 14.4 × 20.8 cm (5 11/16 × 8 3/16 in.)
 The J. Paul Getty Museum, Los Angeles
 Ms. Ludwig X 1, fol. 7 verso (83.MM.118.5.7 verso)



12. Unknown North African artist
One Side of a Bifolium (fols. 6 and 7v), 9th century
 Bifolium from a Fragmentary Qur'an (fols. 6 and 7)
 Pen and ink, gold paint, and tempera colors on parchment
 The J. Paul Getty Museum, Los Angeles
 Ms. Ludwig X 1 (5) recto (83.MM.118.5.5 recto)



13. Unknown Spanish artist
Initial A: Two Men Before a King and a Man Speaking to a Family, about 1290-1310
 from Feudal Customs of Aragon
 Tempera colors, gold leaf, and ink on parchment
 Leaf: 36.5 × 24 cm (14 3/8 × 9 7/16 in.)
 The J. Paul Getty Museum, Los Angeles
 Ms. Ludwig XIV 6, fol. 97 (83.MQ.165.97)



14. Unknown Spanish artist
Initial D: A King Enthroned with Nobles and Lay People and Clerics in Conversation, about 1290-1310
 from Feudal Customs of Aragon
 Tempera colors, gold leaf, and ink on parchment
 Leaf: 36.5 × 24 cm (14 3/8 × 9 7/16 in.)
 The J. Paul Getty Museum, Los Angeles
 Ms. Ludwig XIV 6, fol. 223v (83.MQ.165.223v)



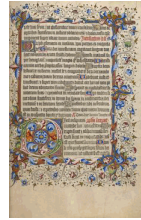
15. Cristoforo Cortese
 Italian, active Venice, Italy 1390 - 1445
Initial Q: Bust Portrait of a Man, early 15th century
 from Compendium of Famous Writings on Ethics
 Tempera colors, pen and ink, and gold leaf on parchment
 bound between wood boards covered with red velvet
 Leaf: 36.8 × 26 cm (14 1/2 × 10 1/4 in.)
 The J. Paul Getty Museum, Los Angeles
 Ms. Ludwig XIV 8, fol. 92v (83.MQ.167.92v)



16. Cristoforo Cortese
 Italian, active Venice, Italy 1390 - 1445
Initial S: Bust Portrait of a Bearded Man, early 15th century
 from Compendium of Famous Writings on Ethics
 Tempera colors, pen and ink, and gold leaf on parchment
 bound between wood boards covered with red velvet
 Leaf: 36.8 × 26 cm (14 1/2 × 10 1/4 in.)
 The J. Paul Getty Museum, Los Angeles
 Ms. Ludwig XIV 8, fol. 243 (83.MQ.167.243)



17. Unknown Italian artist
Jar with a Kufic Pattern, mid-15th century
 Tin-glazed earthenware
 Object: H: 18.1 × Diam. [lip]: 9.53 × W: 13.02cm (H: 7 1/8 × Diam. [lip]: 3 3/4 × W: 5 1/8 in.)
 The J. Paul Getty Museum, Los Angeles
 84.DE.96



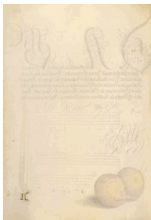
18. Unknown English artist
Decorated Initial D, about 1420-30
 from Psalter
 Tempera colors, gold leaf, gold paint, and ink on parchment bound between pasteboard covered with red morocco
 Leaf: 35.6 × 24.1 cm (14 × 9 1/2 in.)
 The J. Paul Getty Museum, Los Angeles
 Ms. 17, fol. 28 (85.MK.318.28)



19. Unknown English artist
Decorated Initial C, about 1420-30
 from Psalter
 Tempera colors, gold leaf, gold paint, and ink on parchment bound between pasteboard covered with red morocco
 Leaf: 35.6 × 24.1 cm (14 × 9 1/2 in.)
 The J. Paul Getty Museum, Los Angeles
 Ms. 17, fol. 52v (85.MK.318.52v)



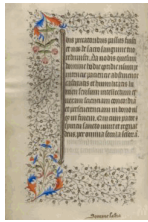
20. Joris Hoefnagel
 Flemish / Hungarian, 1542 - 1600
Insects, Basil, Thyme, and Land Snails, about 1591-96
 from Model Book of Calligraphy
 Watercolors, gold and silver paint, and ink on parchment
 Leaf: 16.6 × 12.4 cm (6 9/16 × 4 7/8 in.)
 The J. Paul Getty Museum, Los Angeles
 Ms. 20, fol. 89 (86.MV.527.89)



21. Joris Hoefnagel
 Flemish / Hungarian, 1542 - 1600
Trompe l'Oeil Stem of Reed Grass, 1561 - 1562;
 illumination added 1591 - 1596
 from Model Book of Calligraphy
 Watercolors, gold and silver paint, and ink on parchment
 Leaf: 16.6 × 12.4 cm (6 9/16 × 4 7/8 in.)
 The J. Paul Getty Museum, Los Angeles
 Ms. 20, fol. 117v (86.MV.527.117v)



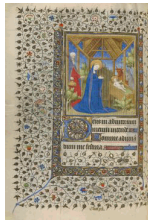
22. Joris Hoefnagel
 Flemish / Hungarian, 1542 - 1600
Butterfly, Marine Mollusk, and Pear, about 1591-96
 from Model Book of Calligraphy
 Watercolors, gold and silver paint, and ink on parchment
 Leaf: 16.6 × 12.4 cm (6 9/16 × 4 7/8 in.)
 The J. Paul Getty Museum, Los Angeles
 Ms. 20, fol. 118 (86.MV.527.118)



23. Unknown French artist
Decorated Text Page, about 1415-20
 from Book of Hours
 Tempera colors, gold paint, gold leaf, and ink on parchment
 Leaf: 20.5 × 14.8 cm (8 1/16 × 5 13/16 in.) The J. Paul Getty Museum, Los Angeles
 Ms. 22, fol. 20v (86.ML.571.20v)



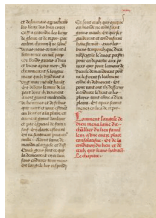
24. Boucicaut Master and Workshop
 French, active about 1390 - 1430
The Annunciation, about 1415-20
 from Book of Hours
 Tempera colors, gold paint, gold leaf, and ink on parchment
 Leaf: 20.5 × 14.8 cm (8 1/16 × 5 13/16 in.)
 The J. Paul Getty Museum, Los Angeles
 Ms. 22, fol. 21 (86.ML.571.21)



25. Boucicaut Master and Workshop
 French, active about 1390 - 1430
The Nativity, about 1415-20
 from Book of Hours
 Tempera colors, gold paint, gold leaf, and ink on parchment
 Leaf: 20.5 × 14.8 cm (8 1/16 × 5 13/16 in.)
 The J. Paul Getty Museum, Los Angeles
 Ms. 22, fol. 60v (86.ML.571.60v)



27. Simon Marmion
 Flemish, active 1450 - 1489
The Wall of Heaven Where the Bad But Not Very Bad Are in Temporary Discomfort, 1475
 from The Visions of the Knight Tondal
 Tempera colors, gold leaf, gold paint, and ink on parchment
 Leaf: 36.3 × 26.2 cm (14 5/16 × 10 5/16 in.)
 The J. Paul Getty Museum, Los Angeles
 Ms. 30, fol. 33v (87.MN.141.33.33v)



29. Unknown Franco-Flemish artist
Text Page, 1475
 from The Visions of the Knight Tondal
 Tempera colors, gold leaf, gold paint, and ink on parchment
 Leaf: 36.3 × 26.2cm (14 5/16 × 10 5/16 in.)
 The J. Paul Getty Museum, Los Angeles
 Ms. 30, fol. 34 (87.MN.141.34.34)



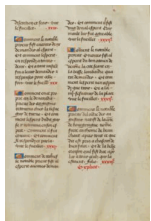
30. Simon Marmion
 Flemish, active 1450 - 1489
The Good But Not Very Good Are Nourished by a Fountain, 1475
 from The Visions of the Knight Tondal
 Tempera colors, gold leaf, gold paint, and ink on parchment
 Leaf: 36.3 × 26.2 cm (14 5/16 × 10 5/16 in.)
 The J. Paul Getty Museum, Los Angeles
 Ms. 30, fol. 34v (87.MN.141.34.34v)



32. Simon Marmion
Flemish, active 1450 - 1489
Two Kings of Ireland, 1475
from The Visions of the Knight Tondal
Tempera colors, gold leaf, gold paint, and ink on parchment
Leaf: 36.3 × 26.2 cm (14 5/16 × 10 5/16 in.) The
J. Paul Getty Museum, Los Angeles
Ms. 30, fol. 35 (87.MN.141.35.35)



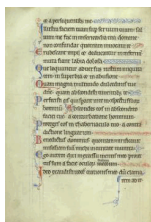
33. Unknown Flemish artist
Table of Contents, 1475
Tempera colors, gold leaf, and ink on parchment
Leaf: 36.4 × 25.7 cm (14 5/16 × 10 1/8 in.)
The J. Paul Getty Museum, Los Angeles
Ms. 31, fol. 5v (87.MN.152.5v)



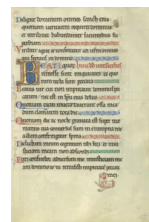
34. Unknown Flemish artist
Table of Contents, 1475
Tempera colors, gold leaf, and ink on parchment
Leaf: 36.4 × 25.7 cm (14 5/16 × 10 1/8 in.)
The J. Paul Getty Museum, Los Angeles
Ms. 31, fol. 6 (87.MN.152.6)



35. Unknown Franco-Flemish artist
Initial B: The Lord Enthroned, about 1260-70
from Antiphonal
Tempera colors and ink on parchment
Leaf (approx.): 48.1 × 34.9 cm (18 15/16 × 13 3/4 in.)
The J. Paul Getty Museum, Los Angeles
Ms. 44/Ludwig VI 5, p. 8 (92.MH.22.p. 8)



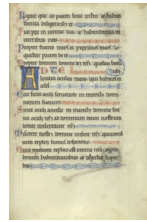
36. Unknown French artist
Text Page, after 1205
from Psalter
Ink and tempera colors on parchment
Leaf: 31 × 21.9 cm (12 3/16 × 8 5/8 in.)
The J. Paul Getty Museum, Los Angeles
Ms. 66, fol. 31v (99.MK.48.31v)



37. Unknown French artist
Decorated Text Page, after 1205
from Psalter
Tempera colors and gold leaf on parchment
Leaf: 31 × 21.9 cm (12 3/16 × 8 5/8 in.)
The J. Paul Getty Museum, Los Angeles
Ms. 66, fol. 32 (99.MK.48.32)



38. Unknown French artist
Decorated Initial L, after 1205
 from Psalter
 Tempera colors and gold leaf on parchment
 Leaf: 31 × 21.9 cm (12 3/16 × 8 5/8 in.) The
 J. Paul Getty Museum, Los Angeles Ms. 66,
 fol. 138v (99.MK.48.138v)



39. Unknown French artist
Decorated Initial A, after 1205
 from Psalter
 Tempera colors and gold leaf on parchment
 Leaf: 31 × 21.9 cm (12 3/16 × 8 5/8 in.)
 The J. Paul Getty Museum, Los Angeles
 Ms. 66, fol. 139 (99.MK.48.139)



40. Unknown Italian artist
Decorated Canceled Page (Initial F: A Prophet), about
 1250-62
 from Abbey Bible
 Tempera and gold leaf on parchment
 Leaf: 26.8 × 19.7 cm (10 9/16 × 7 3/4 in.)
 The J. Paul Getty Museum, Los Angeles
 Ms. 107, fol. 96v (2011.23.96v)



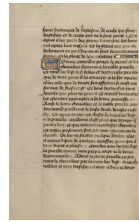
41. Unknown Italian artist
*Initial F: Elkanah with Hannah and Peninnah in the
 Temple*, about 1250-62
 from Abbey Bible
 Tempera and gold leaf on parchment
 Leaf: 26.8 × 19.7 cm (10 9/16 × 7 3/4 in.)
 The J. Paul Getty Museum, Los Angeles
 Ms. 107, fol. 97 (2011.23.97)



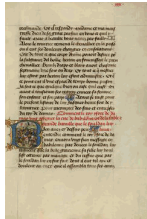
42. Unknown Italian artist
Initial V: Tobit Sleeping, about 1250-62
 from Abbey Bible
 Tempera and gold leaf on parchment
 Leaf: 26.8 × 19.7 cm (10 9/16 × 7 3/4 in.)
 The J. Paul Getty Museum, Los Angeles
 Ms. 107, fol. 185v (2011.23.185v)



43. Unknown Italian artist
Text Page, about 1250 - 1262
 from Abbey Bible
 Tempera and gold leaf on parchment
 Leaf: 26.8 × 19.7 cm (10 9/16 × 7 3/4 in.)
 The J. Paul Getty Museum, Los Angeles
 Ms. 107, fol. 186 (2011.23.186)



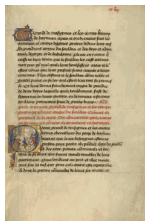
44. David Aubert
 Flemish, active 1453 - 1479
Decorated Text Page, 1464
 from Romance of Gillion de Trazegnies
 Tempera colors, gold, and ink on parchment
 Leaf: 37 × 25.5 cm (14 9/16 × 10 1/16 in.)
 The J. Paul Getty Museum, Los Angeles
 Ms. 111, fol. 26v (2013.46.26v)



45. Lieven van Lathem
 Flemish, about 1430 - 1493
Initial B: A Battle before the Walls of Cairo, 1464
 from Romance of Gillion de Trazegnies
 Tempera colors, gold, and ink on parchment
 Leaf: 37 × 25.5 cm (14 9/16 × 10 1/16 in.)
 The J. Paul Getty Museum, Los Angeles
 Ms. 111, fol. 27 (2013.46.27)



46. David Aubert
 Flemish, active 1453 - 1479
Decorated Text Page, 1464
 from Romance of Gillion de Trazegnies
 Tempera colors, gold, and ink on parchment
 Leaf: 37 × 25.5 cm (14 9/16 × 10 1/16 in.)
 The J. Paul Getty Museum, Los Angeles
 Ms. 111, fol. 234v (2013.46.234v)



47. Lieven van Lathem
 Flemish, about 1430 - 1493
Initial Q: Gillion's Son Gerard Taking Leave of the Sultan, 1464
 from Romance of Gillion de Trazegnies
 Tempera colors, gold, and ink on parchment
 Leaf: 37 × 25.5 cm (14 9/16 × 10 1/16 in.)
 The J. Paul Getty Museum, Los Angeles
 Ms. 111, fol. 235 (2013.46.235)



48. Niccolò da Bologna
 Italian, active 1349 - 1403
Initial B: The Trinity, about 1392-1402
 from Detached leaf from the Gradual of the Carthusian Monastery Santo Spirito near Lucca
 Tempera and gold leaf on parchment
 Leaf: 19.5 × 18.0 cm (7 11/16 × 7 1/8 in.)
 The J. Paul Getty Museum, Los Angeles, Gift of Elizabeth J. Ferrell
 Ms. 115, leaf 1v (2017.122.1.verso)



49. Niccolò da Bologna
Italian, active 1349 - 1403
Initial N: The Beheading of Saint Paul, about 1392-1402
from Detached leaf from the Gradual of the Carthusian Monastery Santo Spirito near Lucca
Tempera and gold leaf on parchment
Leaf: 21.8 x 15.0 cm (8 5/8 x 5 7/8 in.)
The J. Paul Getty Museum, Los Angeles, Gift of Elizabeth J. Ferrell
Ms. 115, leaf 2 (2017.122.2.recto)



50. Niccolò da Bologna
Italian, active 1349 - 1403
Initial S: The Beheading of Saint Paul and the Miracle of Plautilla's Veil, about 1392-1402
from Detached leaf from the Gradual of the Carthusian Monastery Santo Spirito near Lucca
Tempera and gold leaf on parchment
Leaf: 20.1 x 19.8 cm (7 15/16 x 7 13/16)
The J. Paul Getty Museum, Los Angeles, Gift of Elizabeth J. Ferrell
Ms. 115, leaf 3 (2017.122.3.recto)



51. Niccolò da Bologna
Italian, active 1349 - 1403
Initial G: The Ascension of Saint Mary Magdalene, about 1392-1402
from Detached leaf from the Gradual of the Carthusian Monastery Santo Spirito near Lucca
Tempera and gold leaf on parchment
Leaf: 19.1 x 20.3 cm (7 1/2 x 8 in.)
The J. Paul Getty Museum, Los Angeles, Gift of Elizabeth J. Ferrell
Ms. 115, leaf 4v (2017.122.4.verso)



52. Niccolò da Bologna
Italian, active 1349 - 1403
Initial G: The Assumption of the Virgin, about 1392-1402
from Detached leaf from the Gradual of the Carthusian Monastery Santo Spirito near Lucca
Tempera and gold leaf on parchment
Leaf: 20.3 x 20.3 cm (8 x 8 in.)
The J. Paul Getty Museum, Los Angeles, Gift of Elizabeth J. Ferrell
Ms. 115, leaf 5 (2017.122.5.recto)



53. Niccolò da Bologna
Italian, active 1349 - 1403
Initial M: The Apostles, about 1392-1402
from Detached leaf from the Gradual of the Carthusian Monastery Santo Spirito near Lucca
Tempera and gold leaf on parchment
Leaf: 20.3 x 20.3 cm (8 x 8 in.)
The J. Paul Getty Museum, Los Angeles, Gift of Elizabeth J. Ferrell
Ms. 115, leaf 6v (2017.122.6.verso)



54. Niccolò da Bologna
Italian, active 1349 - 1403
Initial P: The Ascension, about 1365
Tempera and gold leaf on vellum
Leaf: 73.7 x 53.3 cm (29 x 21 in.)
Los Angeles County Museum of Art, Gift of Anna Bing Arnold
Image: www.lacma.org
L.2018.39



The J. Paul Getty Museum

December 12, 2018

Additional information about some of these works of art can be found by searching [getty.edu](http://www.getty.edu/art/collection/) at <http://www.getty.edu/art/collection/>

© 2018 J. Paul Getty Trust