

Remembering Antiquity: The Ancient World Through Medieval Eyes

January 24 to May 28, 2017

The J. Paul Getty Museum at the Getty Center



1. [Pendant with a Siren](#)

Greek, 725-700 BC
Bronze

Object: H: 6.9 × W: 6 × D: 1.4 cm (2 11/16 × 2 3/8 × 9/16 in.)

The J. Paul Getty Museum, Villa Collection, Malibu, California, Gift of Barbara and Lawrence Fleischman 96.AC.72



2. [Container with a Male Siren](#)

Greek (Corinthian), about 570 BC
Terracotta

Object: H: 7.9 cm (3 1/8 in.)

The J. Paul Getty Museum, Villa Collection, Malibu, California, Gift of Barbara and Lawrence Fleischman 96.AE.222



3. [Handle with a Siren](#)

Greek, 450-425 BC
Bronze

Object: H: 17 × W: 8.3 × D: 5.5 cm (6 11/16 × 3 1/4 × 2 3/16 in.)

The J. Paul Getty Museum, Villa Collection, Malibu, California, Gift of Barbara and Lawrence Fleischman 96.AC.82



4. [Mixing Vessel Fragment with Skylla](#)

Greek (South Italian, Apulian), 375-350 BC
Black Fury Group
Greek (Apulian), active early 300s B.C.
Terracotta

Object: H: 19 × W: 18.5 cm (7 1/2 × 7 5/16 in.)

The J. Paul Getty Museum, Villa Collection, Malibu, California 86.AE.417



5. **Appliqué with Skylla**

Greek, 300-275 BC

Silver with gilding

Object: H: 6.2 × W: 7.1 cm (2 7/16 × 2 13/16 in.)

The J. Paul Getty Museum, Villa Collection, Malibu, California, Gift of Barbara and Lawrence Fleischman 96.AM.111.2



6. **Earrings with Nike**

Greek, 225-175 BC

Gold with glass

Object: H: 9.7 cm (3 13/16 in.)

The J. Paul Getty Museum, Villa Collection, Malibu, California, Gift of Barbara and Lawrence Fleischman 96.AM.159.1



7. **Earrings with Nike**

Greek, 225-175 BC

Gold with glass

Object: H: 9.3 cm (3 11/16 in.)

The J. Paul Getty Museum, Villa Collection, Malibu, California, Gift of Barbara and Lawrence Fleischman 96.AM.159.2



8. **Statuette of Alexander the Great**

East Greek, 200-100 BC

Marble

Object: H: 31.5 × W: 10.7 × D: 7 cm (12 3/8 × 4 3/16 × 2 3/4 in.)

The J. Paul Getty Museum, Villa Collection, Malibu, California 73.AA.17



9. **Cameo with Hermaphroditos**

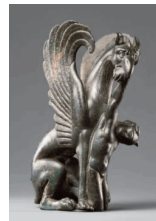
Greek, 150-100 BC

Attributed to Protarchos

Sardonyx set in modern gold ring

Object (greatest extent): H: 1.8 cm (11/16 in.)

The J. Paul Getty Museum, Villa Collection, Malibu, California 2001.28.9



10. **Statuette of Griffin and Arimasp**

Greek, 125-75 BC

Bronze

Object: H: 7.9 cm (3 1/8 in.)

The J. Paul Getty Museum, Villa Collection, Malibu, California, Gift of Barbara and Lawrence Fleischman 96.AB.152



11. [Intaglio with Chiron and Achilles](#)
Roman, 50-1 BC
Gem: glass; ring: bronze
Object (gem, approx.): H: 1.6 × W: 1.1 cm (5/8 × 7/16 in.)
The J. Paul Getty Museum, Villa Collection, Malibu, California
85.AN.370.83



12. [Head of Augustus](#)
Roman, 25-1 BC
Marble
Object: H: 39 × W: 21 × D: 24 cm (15 3/8 × 8 1/4 × 9 7/16 in.)
The J. Paul Getty Museum, Villa Collection, Malibu, California
78.AA.261



13. [Coin with Alexander the Great Wearing the Horn of Zeus Ammon](#)
Greek, 297-281 BC
Silver
The J. Paul Getty Museum, Villa Collection, Malibu, California, Gift of Lily Tomlin
80.NH.152.15



14. [Statuette of Venus](#)
Roman, AD 1-100
Bronze
Object: H: 17 × W: 6.4 × D: 6.4 cm (6 11/16 × 2 1/2 × 2 1/2 in.)
The J. Paul Getty Museum, Villa Collection, Malibu, California
57.AB.13



15. [Statuette of Jupiter](#)
Roman, AD 1-100
Silver
Object: H: 17.5 cm (6 7/8 in.)
The J. Paul Getty Museum, Villa Collection, Malibu, California
77.AM.26

16. Roman
[Medical Instruments](#), 100 BC-AD 100
Bronze
Object: L: 11.1 cm (4 3/8 in.)
The J. Paul Getty Museum, Villa Collection, Malibu, California
82.AC.22.9

17. [Medical Instruments](#)

Roman, 100 BC-AD 100

Bronze

Object: L: 11 cm (4 5/16 in.)

The J. Paul Getty Museum, Villa Collection, Malibu,
California

82.AC.22.21

18. [Medical Instruments](#)

Roman, 100 BC-AD 100

Bronze

Object: L: 6.5 cm (2 9/16 in.)

The J. Paul Getty Museum, Villa Collection, Malibu,
California

82.AC.22.25

19. [Medical Instruments](#)

Roman, 100 BC-AD 100

Bronze

Object: L: 8.9 cm (3 1/2 in.)

The J. Paul Getty Museum, Villa Collection, Malibu,
California

82.AC.22.29

20. [Medical Instruments](#)

Roman, 100 BC-AD 100

Bronze

Object: L: 5.9 cm (2 5/16 in.)

The J. Paul Getty Museum, Villa Collection, Malibu,
California

82.AC.22.164

21. [Medical Instruments](#)

Roman, 100 BC-AD 100

Bronze

Object: L: 13.4 cm (5 1/4 in.)

The J. Paul Getty Museum, Villa Collection, Malibu,
California

82.AC.22.258

22. [Medical Instruments](#)

Roman, 100 BC-AD 100

Bronze

Object: L: 16.9 cm (6 5/8 in.)

The J. Paul Getty Museum, Villa Collection, Malibu,
California

82.AC.22.261

23. [Medical Instruments](#)

Roman, 100 BC-AD 100

Bronze

Object: L: 11.9 cm (4 11/16 in.)

The J. Paul Getty Museum, Villa Collection, Malibu,
California

82.AC.22.264

24. [Medical Instruments](#)

Roman, 100 BC-AD 100

Bronze

Object: L: 15 cm (5 7/8 in.)

The J. Paul Getty Museum, Villa Collection, Malibu,
California

82.AC.22.270

25. [Medical Instruments](#)

Roman, 100 BC-AD 100

Bronze

Object: L: 9.2 cm (3 5/8 in.)

The J. Paul Getty Museum, Villa Collection, Malibu,
California

82.AC.22.273

26. [Medical Instruments](#)

Roman, 100 BC-AD 100

Bronze

Object: L: 11.2 cm (4 7/16 in.)

The J. Paul Getty Museum, Villa Collection, Malibu,
California

82.AC.22.276

27. [Medical Instruments](#)

Roman, 100 BC-AD 100

Bronze

Object: L: 11.5 cm (4 1/2 in.)

The J. Paul Getty Museum, Villa Collection, Malibu,
California

82.AC.22.278

28. [Medical Instruments](#)

Roman, 100 BC-AD 100

Bronze

Object: L: 16.1 cm (6 5/16 in.)

The J. Paul Getty Museum, Villa Collection, Malibu,
California

82.AC.22.292

29. [Medical Instruments](#)

Roman, 100 BC-AD 100

Bronze

Object: L: 15.1 cm (5 15/16 in.)

The J. Paul Getty Museum, Villa Collection, Malibu, California

82.AC.22.293



30. [Medical Instruments](#)

Roman, 100 BC-AD 100

Bronze

Object: L: 11.4 cm (4 7/16 in.)

The J. Paul Getty Museum, Villa Collection, Malibu, California

82.AC.22.298



31. [Fragmentary Inscription](#)

Roman, AD 1-200

Marble

Object (approx.): H: 43.2 × W: 50.8 cm (17 × 20 in.)

The J. Paul Getty Museum, Villa Collection, Malibu, California, Gift of James W. and Yolanda Hepburn

82.AA.32



32. [Cameo with a Woman and Girl](#)

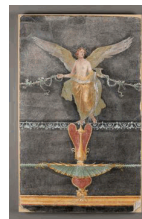
Roman, AD 1-100

Sardonyx

Object (greatest extent): 2.1 cm (13/16 in.)

The J. Paul Getty Museum, Villa Collection, Malibu, California

2001.28.10



33. [Cinerarium with Lid](#)

Roman, AD 20-40

Marble

Object: H: 42 × W: 45 × D: 39.5 cm (16 9/16 × 17 11/16 × 15 9/16 in.)

The J. Paul Getty Museum, Villa Collection, Malibu, California

72.AA.113



34. [Fresco with Victory](#)

Roman, AD 50-79

Fresco

Object: H: 91 × W: 56 × D: 5 cm (35 13/16 × 22 1/16 × 1 15/16 in.)

The J. Paul Getty Museum, Villa Collection, Malibu, California

72.AG.78.2



35. [Cup with Zodiacal Signs](#)
Romano-Egyptian, About AD 150
Steatite
Object: Diam.: 14.9 cm (5 7/8 in.)
The J. Paul Getty Museum, Villa Collection, Malibu, California, Gift of Stefan Hornak
83.AA.327

36. Unknown
Textile with Venus and a Male Figure, AD 300-400
Wool and linen
Unframed (mounted): 40.6 × 40.6 cm (16 × 16 in.)
Cantor Arts Center at Stanford University, Gift of Timothy Hopkins
L.2017.7



37. Unknown
[Canon Table Pages](#), AD 826-38
from Gospel Book
Tempera colors on parchment
Leaf: 31.6 × 24 cm (12 7/16 × 9 7/16 in.)
The J. Paul Getty Museum, Los Angeles
Ms. Ludwig II 1, fol. 8v (83.MB.65.8v)



38. Unknown
[Canon Table Pages](#), AD 826-38
from Gospel Book
Tempera colors on parchment
Leaf: 31.6 × 24 cm (12 7/16 × 9 7/16 in.)
The J. Paul Getty Museum, Los Angeles
Ms. Ludwig II 1, fol. 9 (83.MB.65.9)



39. Unknown
[Decorated Initial P](#), about AD 845
Leaf from a Bible
Iron gall ink on parchment with tempera
Leaf: 46.4 × 33.7 cm (18 1/4 × 13 1/4 in.)
The J. Paul Getty Museum, Los Angeles
Ms. Ludwig I 1, leaf 10 (83.MA.50.10.recto)



40. Unknown
[July: Julius Caesar](#)
[August: Augustus](#), probably AB 1170s
from Stammheim Missal
Tempera colors, gold leaf, silver leaf, and ink on parchment
Leaf: 28.2 × 18.9 cm (11 1/8 × 7 7/16 in.)
The J. Paul Getty Museum, Los Angeles
Ms. 64, fol. 6v (97.MG.21.6v)



41. German
July: Julius Caesar
August: Augustus, probably AD 1170s
 from Stammheim Missal
 Tempera colors, gold leaf, silver leaf, and ink on parchment
 Leaf: 28.2 × 18.9 cm (11 1/8 × 7 7/16 in.)
 The J. Paul Getty Museum, Los Angeles
 Ms. 64, fol. 7 (97.MG.21.7)



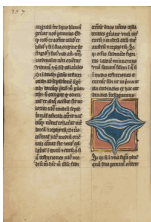
42. Unknown
Constellation Diagrams, AD 1200s
 from Miscellany of Texts on the Quadrivium
 Pen and black, green, and red inks on parchment bound between pasteboard covered with brown calf
 Leaf: 24.1 × 15.6 cm (9 1/2 × 6 1/8 in.)
 The J. Paul Getty Museum, Los Angeles
 Ms. Ludwig XII 5, fol. 149v (83.MO.134.149v)



43. Unknown
Constellation Diagrams, AD 1200s
 from Miscellany of Texts on the Quadrivium
 Pen and black, green, and red inks on parchment bound between pasteboard covered with brown calf
 Leaf: 24.1 × 15.6 cm (9 1/2 × 6 1/8 in.)
 The J. Paul Getty Museum, Los Angeles
 Ms. Ludwig XII 5, fol. 150 (83.MO.134.150)



44. Unknown
Initial S: Griffin and Rider, about AD 1240-50
 from Psalter
 Tempera colors, gold leaf, and silver leaf on parchment
 Leaf: 22.7 × 15.7 cm (8 15/16 × 6 3/16 in.)
 The J. Paul Getty Museum, Los Angeles
 Ms. Ludwig VIII 2, fol. 76 (83.MK.93.76)



45. Unknown
Diagram of Ocean Currents, AD 1277-1300
 from Bestiary
 Tempera colors, pen and ink, gold leaf, and gold paint on parchment
 Leaf: 23.3 × 16.4 cm (9 3/16 × 6 7/16 in.)
 The J. Paul Getty Museum, Los Angeles
 Ms. Ludwig XV 4, fol. 157v (83.MR.174.157v)



46. Unknown
Initial P: Alexander the Great Carried Aloft by Griffins, about 1300
 from Scholastic History
 Tempera colors and gold leaf on parchment
 Leaf: 34.3 × 24.3 cm (13 1/2 × 9 9/16 in.)
 The J. Paul Getty Museum, Los Angeles
 Ms. Ludwig XIII 1, fol. 222v (83.MP.144.222v)



47. Italian

[The Angel Slaying the Assyrians and the Death of Sennacherib](#), about AD 1300

Miniature from a Book of Old Testament Prophets

Tempera colors and gold on parchment

Leaf: 7.3 × 17.5 cm (2 7/8 × 6 7/8 in.)

The J. Paul Getty Museum, Los Angeles

Ms. 35, leaf 1 (88.MS.125.1.recto)



49. Master of the Oxford Hours

French, active about 1440s

[Varro in His Study](#), about AD 1440-50

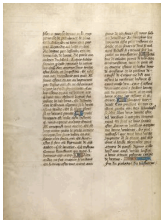
from City of God

Tempera colors, gold and silver paint on parchment

Leaf: 36.2 × 27.3 cm (14 1/4 × 10 3/4 in.)

The J. Paul Getty Museum, Los Angeles

Ms. Ludwig XI 10, fol. 173 (83.MN.129.173)



51. Unknown

[Text Page](#), about 1470 - 1475

from Book of the Deeds of Alexander the Great

Tempera colors, gold leaf, gold paint, and ink on parchment

Leaf: 43.2 × 33 cm (17 × 13 in.)

The J. Paul Getty Museum, Los Angeles

Ms. Ludwig XV 8, fol. 14v (83.MR.178.14v)



48. Unknown

[Death of Seneca in His Bath; Nero Cutting Open His Mother's Belly](#), about AD 1400-1410

from World Chronicle

Tempera colors, gold, silver paint, and ink on parchment

Leaf: 33.5 × 23.5 cm (13 3/16 × 9 1/4 in.)

The J. Paul Getty Museum, Los Angeles

Ms. 33, fol. 225 (88.MP.70.225)

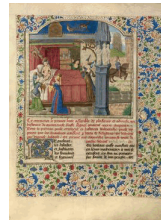
50. Unknown

[Bloodletting Figure with Signs of the Zodiac](#), AD 1450

Tempera on parchment

Page: 21.3 × 15.3 cm (8 3/8 × 6 in.)

L.2017.9



52. Master of the Jardin de vertueuse consolation and assistant

Flemish, active 3rd quarter of 15th century

[The Birth of Alexander](#), about AD 1470-75

from Book of the Deeds of Alexander the Great

Tempera colors, gold leaf, gold paint, and ink on parchment

Leaf: 43.2 × 33 cm (17 × 13 in.)

The J. Paul Getty Museum, Los Angeles

Ms. Ludwig XV 8, fol. 15 (83.MR.178.15)



53. Flemish
[Skylla and Sirens](#), about AD 1475
from *Mirror of History*
Tempera colors, gold leaf, and gold paint on parchment
Leaf: 43.8 × 30.5 cm (17 1/4 × 12 in.)
The J. Paul Getty Museum, Los Angeles
Ms. Ludwig XIII 5, v1, fol. 68v (83.MP.148.1.68v)



54. Unknown
[Hybrids](#), about 1475
from *Mirror of History*
Tempera colors, gold leaf, and gold paint on parchment
Leaf: 43.8 × 30.5 cm (17 1/4 × 12 in.)
The J. Paul Getty Museum, Los Angeles
Ms. Ludwig XIII 5, v1, fol. 69 (83.MP.148.1.69)

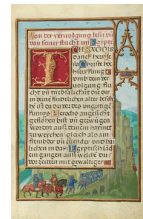


55. Matteo da Milano
Italian, active 1492 - 1523
[Initial A: King David](#), about AD 1520
from *Missal*
Tempera and gold on parchment
Leaf: 33.6 × 23.4 cm (13 1/4 × 9 3/16 in.)
The J. Paul Getty Museum, Los Angeles
Ms. 87, fol. 52v (2004.65.52v)

56. Unknown
[Text Page](#), about 1520
from *Missal*
Tempera, gold, and ink on parchment
Leaf: 33.6 × 23.4 cm (13 1/4 × 9 3/16 in.)
The J. Paul Getty Museum, Los Angeles
Ms. 87, fol. 53 (2004.65.53)



57. Simon Bening
Flemish, about 1483 - 1561
[The Flight into Egypt](#), AD 1525-30
from *Prayer Book of Cardinal Albrecht of Brandenburg*
Tempera colors, gold paint, and gold leaf on parchment
Leaf: 16.8 × 11.4 cm (6 5/8 × 4 1/2 in.)
The J. Paul Getty Museum, Los Angeles
Ms. Ludwig IX 19, fol. 47v (83.ML.115.47v)



58. Simon Bening
Flemish, about 1483 - 1561
[Border with Michal Helping David to Escape from Saul](#),
about 1525 - 1530
from *Prayer Book of Cardinal Albrecht of Brandenburg*
Tempera colors, gold paint, and gold leaf on parchment
Leaf: 16.8 × 11.4 cm (6 5/8 × 4 1/2 in.)
The J. Paul Getty Museum, Los Angeles
Ms. Ludwig IX 19, fol. 48 (83.ML.115.48)