

Vocabularies for Access to History and New Knowledge: Focus on the Getty Vocabularies

Patricia Harpring
Managing Editor
Getty Vocabulary Program
Getty Research Institute

EuroMed 2020
2 November 2020

Getty

Find the Getty Vocab Online

- For information about the Getty vocabularies, see this site
- Search the data, access data releases, how to contribute, editorial guidelines, training materials, news
- Contact us: vocab@getty.edu

Getty

The Getty Research Institute

Exhibitions & Events
Special Collections
Library
Search Tools & Databases
Scholars & Projects
Publications
About the GRI

Search Tools & Databases

- Primo Search
- Getty Research Portal
- Collection Inventories & Finding Aids
- Photo Archive
- Research Guides & Bibliographies
- Digital Collections
- Article & Research Databases
- Collecting & Provenance Research
- BHA & RILA
- ▼ **Getty Vocabularies**
 - ▶ Art & Architecture Thesaurus (AAT)®
 - ▶ Cultural Objects Name Authority (CONA)®
 - ▶ Getty Thesaurus of Geographic Names (TGN)®
 - ▶ Union List of Artist Names (ULAN)®
 - ▶ Contribute
 - ▶ Editorial Guidelines
 - ▶ Getty Vocabularies as Linked Open Data
 - ▶ Frequently Asked Questions
 - ▶ Obtain the Getty Vocabularies
 - ▶ Training Materials

Getty Vocabularies

NEW

The Getty vocabularies are now available as Linked Open Data. [Learn more.](#)

What is cinnamon? What is a rhyton? The Getty vocabularies contain structured terminology for art, architecture, decorative arts, archival materials, visual surrogates, conservation, and bibliographic materials. Compliant with international standards, they provide authoritative information for catalogers, researchers, and data providers. The vocabularies grow through contributions. In the new linked, open environments, they provide a powerful conduit for research and discovery for digital art history. To search the vocabularies, click on the links below.

The Art & Architecture Thesaurus (AAT)®

Catherine wheel or rose window? AAT is a structured vocabulary, including terms, descriptions, and other metadata for generic concepts related to art, architecture, conservation, archaeology, and other cultural heritage. Included are work types, styles, materials, techniques, and others.

The Getty Thesaurus of Geographic Names (TGN)®

Thebes or Diospolis? TGN is a structured vocabulary, including names, descriptions, and other metadata for extant and historical cities, empires, archaeological sites, and physical features important to research of art and architecture. TGN may be linked to GIS, maps, and other geographic resources.

The Cultural Objects Name Authority (CONA)®

Mona Lisa or La Gioconda? CONA compiles titles, attributions, depicted subjects, and other metadata about works of art,

The Union List of Artist Names (ULAN)®

Titian or Tiziano Vecellio? ULAN is a structured vocabulary, including names, biographies,

Linked Open data
GETTY VOCABULARIES

See What's New

- Multilingual & multi-cultural
- AAT: Conservation terms;
- Dutch: 60,600; Spanish:
- 55,000; Chinese: 26,000;
- German: 20,500

Have a Question?

- ✉ Contact the Vocabulary Program
- 📧 [Subscribe to GRI News](#)

EuroMed 2020: Getty Vocabularies

The Way We Were Finding information by hand

My box of research materials for one project, many years ago



Discovery, Knowledge Creation, and Dissemination of research and art information: pillars of GRI mission

- How did art historians do research in the past?
- By hand, physical resources and card catalogs, bibliographic indexes such as BHA (Bibliography for the History of Art)
- Printing out, photocopying, taking photos, note taking
- Traveling around the world, many months to find all data
- Needed better methods and tools for research and discovery
- Solutions would also address needs of repositories, other cataloging institutions with mission to disseminate their data
- The Getty Vocabularies, CDWA, etc. were developed to allow consistency in cataloging and improvement of retrieval

Goal = data linked to other data, discoverable –
 First = deal with human factor, links/consensus across different disciplines; repositories (archives, special collections, visual resources, museums, bibliographic, scholars); languages and cultures; current and historical



Where We Are Now

A few decades have passed ...
Using Linked Open Data

Getty Vocabularies are LINK-able

Data in standard formats that allow linking

- Now we can begin to find materials for research and discovery online
- Getty vocabularies have been used for indexing
 Now = links are possible via LOD, links to TGN and AAT within ULAN are used
- 90 sample SPARQL queries, editable

Find artists who worked in Italy and lived during a given time range but who are not Italian

Select ULAN records

- Having event that took place in **tn:1000080** Italy or any of its descendants
- Birth date between 1250 and 1780
- Descendants of facet **ulan:500000002** "Persons, Artists"
- Not having nationality **aat:300111198** Italian or any of its descendants

LINK

Hier. Link in TGN

LINK

LINK

ULAN

Getty Vocabularies: LOD SPARQL Queries

```

select ?x ?name ?bio ?birth {
  {select distinct ?x
   {?x
    foaf:focus/bio:event/(schema:location)|(schema:location/gvp:broaderExtended)} tgn:1000080-place}}
  ?x gvp:prefLabelGVP/xl:literalForm ?name;
  foaf:focus/gvp:biographyPreferred [
    schema:description ?bio;
    gvp:estStart ?birth].
  filter ("1250"^^xsd:gYear <= ?birth && ?birth <= "1780"^^xsd:gYear)
  filter exists {?x gvp:broaderExtended ?facet.
  filter (?facet in (ulan:500000002, ulan:500000002))}
  filter not exists {
    ?x
    foaf:focus/(schema:nationality)|(schema:nationality/gvp:broaderExtended)} aat:300111198}}
    
```

4.20 Places Nearby Each Other

5 ULAN-Specific Queries

5.1 Agents by Type

5.2 Associative Relations of Agent

5.3 Female Artists

5.4 Female Artists as a Hobby

5.5 Native American Painters

5.6 Names of Native American Painters

5.7 Architects Born in the 14th or 15th Century

5.8 Indian and Pakistani Architectural Groups

5.9 Non-Italians Who Worked in Italy

5.10 Artists Associated to a Given Patron

5.11 Carpenters, Sculptors, Flemish printmakers, listed

5.12 Artists Whose Identity May be Associated or Confused With Another

5.13 Ordered Hierarchy of Given Subject

5.14 Ancient Artists or Groups by Nationality

5.15 Art Repositories in the USA by State

5.16 Popes and Their Reigns

5.17 Pope Reign Durations

5.18 Life Events

5.19 Artists with Name, Bio, Nationality, Type

6 Language Queries

6.1 Scientific Names by Language

6.2 Scientific Names not in English and Latin

6.3 Find Terms by Language Tag

6.4 Languages and ISO Codes

6.5 Language URLs

- Then use this set of artists to search for works

– [still is in-process, as of now not enough works are discoverable]

Getty Vocabularies: Our History

- The Getty Vocabularies were established to meet the needs of art museum, visual resources, archives, and art library communities
- Authoritative vocabularies -- indexing and retrieval of art information, architecture, conservation, archaeology; but not authoritarian = flexibility to achieve buy-in
- Why standards and controlled vocabularies? To make data more consistent, more usable in-house, and in broader environments
- Better able to withstand changes in technology and practices over time
- Greatest investment in cataloging is the human investment, with experts analyzing and recording data -- preserve that investment via standards
- Sources of data? For Getty Vocabularies, core initial data was compiled from existing Getty projects' data and a few open data resources
- Vocabularies are compiled through contributions from qualified and trained contributors (visual resources collections, museums, art libraries, special coll., bibliographic indexing projects, international translation projects)
- Authoritative -- Contributors and published sources are cited
- Authoritative -- Persistent numeric identifiers for records, terms, and other data; co-referencing to other IDs for the same concept in other resources

Euromed 2020: Getty Vocabularies



Getty

Getty Vocabularies: Our History

<https://www.getty.edu/research/tools/vocabularies/faq.html#1a>

- Getty was a trailblazer
 - a) committing resources to standards and vocabularies for art information, and
 - b) bringing together disparate communities under Getty leadership
- AAT (Toni Peterson), ULAN and TGN were begun 1980s-1990s (director, Eleanor Fink)
- Informed by CIHA TAU (Thesaurus Artis Universalis)
- CONA and IA based on CDWA
- Getty Vocabulary Program formerly part of the Art History Information Program

Getty



Partial group of AHIP staff at new Getty Center, 1997

Getty Vocabularies: Our History

- We continue working with the international community
- E.g., ITWG (International Terminology Working Group), February 2020
- AAT translations, other contributions, implementations of Vocabs



Getty Vocabularies: Based in Standards

Standards for data content and structure

There are several types of controlled vocabularies and related specifications relevant for art and other cultural heritage information

- Subject heading lists
- Controlled lists
- Synonym ring lists
- Authority Files
- Taxonomies
- Alphanumeric classifications
- **Thesauri** Getty Vocabularies are Thesauri
- Ontologies
- Folksonomies



Euromed 2020: Getty Vocabularies

Getty Vocabularies: Based in Standards



- Thesaurus: A semantic network of unique concepts
- Thesauri may be monolingual or multilingual
- Thesauri may have the following three relationships:
 - Equivalence Relationships
 - Hierarchical Relationships
 - Associative Relationships



stirrup cups
coaching glasses
hunting glasses

associative



sturzbechers
Sturzbecher
stortebekers

hierarchical
Objects Facet
.... Furnishings and Equipment
..... Containers
..... <culinary containers>
..... <vessels for serving /
..... <consuming food>

equivalence

rhyta
rhyton
rhytons
rhea
rheon
rheons
ritón
ῥυτόν
rhütón
莱坦酒杯

distinguished
from

Getty

Getty Vocabularies: Based in Standards

- Compliant with national (NISO) and international (ISO) standards for thesaurus construction: ISO 25964-1:2011; ISO 25964-2:2013; ANSI/NISO Z39.19-2005,
- Getty Vocabularies are compliant with / map to other standards:
 - CDWA (Categories for the Description of Works of Art)
 - CCO (Cataloging Cultural Objects)
 - VRA Core (Visual Resources Association core categories)
 - LIDO (Lightweight Information Describing Objects)
 - CIDOC CRM (CIDOC Conceptual Reference Model) (ISO 21127:2014)
- Editorial rules based on common practice, reflect best practice

Metadata Standards Crosswalk https://https://www.getty.edu/research/publications/electronic_publications/intrometadata/crosswalks.html

CDWA	CCO	CONA	CIDOC CRM [coming soon]	LIDO [coming soon]	CDWA Lite	VRA Core	MARC/AACR [RDF coming soon]	MOD
1. OBJECT/ WORK (core)								
1.1. Catalog Level (core)		Creator_Other_Displays. catalog_level			<<cdwalite: recordType>	<vra: work> or <vra: collection>	655 Genre/Form 300a Physical Description - Extent	<genre> <extent>
1.2. Object/Work Type (core)	Work Type	PType_Role_Rel. subject_id and ptype_role_id [link to AAT]			<<cdwalite: objectWorkType>	<vra: worktype> in <vra: work> or <vra: collection>	655 Genre - Form	<genre>

Getty Vocabularies: Based in Standards

Standards for data releases

- Compiled, merged, edited, and published by the Getty; refreshed monthly
- **Open Data Commons Attribution License (ODC-By) v1.0**
- Allows sharing, creation, adaptation of data with attribution

- **Data is made available in various ways, use technical standards for releases**
 - online searching, <https://www.getty.edu/research/tools/vocabularies/index.html>
 - Web services APIs
 - Relational tables and XML format
 - Linked Open Data: structured and published to make it openly accessible and shareable on the Semantic Web: **JSON, RDF, N3/Turtle, N-Triples** formats'
- Links to LOD and Sparql end point <https://www.getty.edu/research/tools/vocabularies/loj/index.html>

Getty

Scope of Getty Vocabularies

The mission of the Getty Vocabulary Program (GVP) is to produce **rich, structured, authoritative vocabularies**, in compliance with **international standards**, that provide a powerful conduit for **inter-related, linked, and meaningful research, discovery, and understanding of the visual arts** and their various histories, in collaboration with the **international community**, and utilizing **training and outreach** to inform the field.

A primary goal of the Getty Vocabulary Program is to broaden and enrich the scope and coverage of the Getty Vocabularies to become ever more **multilingual, multicultural, inclusive, and representative of the subjects and priorities of the GRI, the Getty, and global art history.**

<https://www.getty.edu/research/tools/vocabularies/faq.html#1aa>

Euromed 2020: Getty Vocabularies



Getty

How Getty Vocabularies are used Scope of Getty Vocabularies

Catalog Level: item **Classification:** paintings
Work Type:
 painting (visual work) [AAT 300033618]
 scroll painting [AAT 300033666]

Title: Scene of Early Spring **Type:** repository **Lang:** English
Title: 宋郭熙早春圖 軸 **Type:** repository **Lang:** **AAT 300015012**

Creator Display: Guo Xi, Song Dynasty
Index: Guo Xi (Chinese painter, 1023 - ca. 1090) [ULAN 500125758]
Role: artist
Creation Date: 1072 CE; fifth year of Xining
 Shenzong Emperor, Northern Song Dynasty
Index: Start Date: 1072 **End Date:** 1072
Materials Display: painted scroll
Index: color (pigment) [AAT 30026487]
Index: ink [AAT 300015012]
Index: silk (silkworm material) [AAT 300014109]
Index: paper (fiber product) [AAT 300014109]



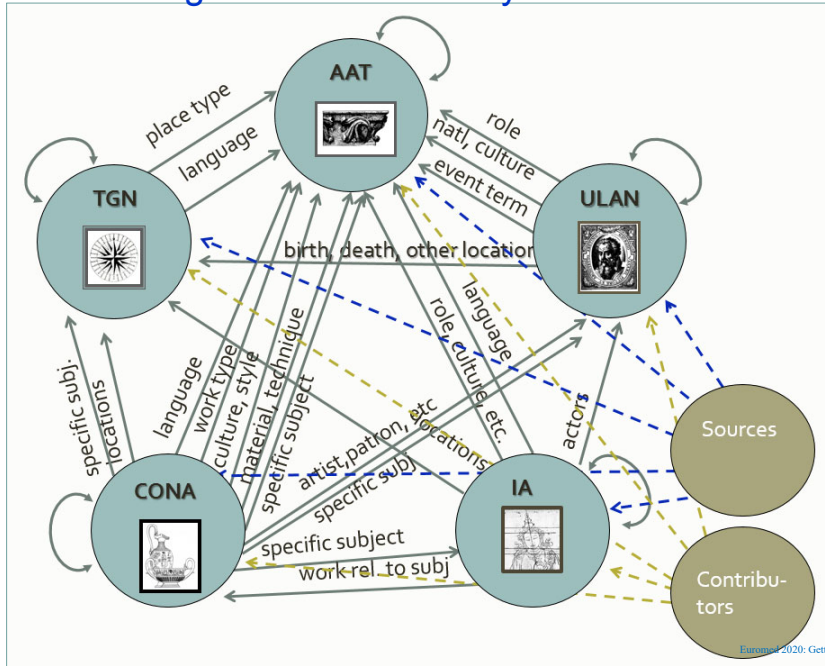
- ink ([preferred](#), C,U,LC,English-P,D,U,SN)
- 墨水 (C,U,Chinese (traditional)-P,D,U,U)
- 油墨 (C,U,Chinese (traditional),UF,U,U)
- 墨汁 (C,U,Chinese (traditional),UF,U,U)
- mò shuǐ (C,U,Chinese (transliterated Hanyu))
- mo shui (C,U,Chinese (transliterated Pinyin))
- (Chinese (transliterated Wade-Giles))
- inkt (C,U,Dutch-P,D,U,U)
- encre (C,U,French-P,D,U,N)
- tinta (C,U,Spanish-P,D,U,U)



Euromed 2020: Getty Vocabularies

Linking between the Getty Vocabularies

Links and relationship types are within and between vocabularies were normalized and published when LOD was created



Euromed 2020: Getty Vocabularies

amfoor
amphorae
arc-boutant
brittleness
Buddhism
calligraphy
emulsifier
façades
flying buttress
飛扶壁
lithographer
litógrafos
luchtbogen
orthogonal plan
Macedonian
millwork
Rinascimento
ῥυτόν
stupa
Sturzbecher
travertine
weft wrapping
yastiks
zeppelin
Zigula
zinc oxide

What is AAT?



AAT, the Art & Architecture Thesaurus®

The AAT is a thesaurus containing **generic terms**, dates, relationships, related to art, architecture, conservation, other cultural heritage

<https://www.getty.edu/research/tools/vocabularies/aat/index.html>
<https://www.getty.edu/research/tools/vocabularies/guidelines/index.html#aat>

- Used for work types, roles, materials, styles, cultures, techniques, etc.
- Generic terms, not proper names
- Multilingual; large translation projects are underway
- Facets are the upper levels of the AAT structure
- AAT is not organized by subject matter or discipline

Totals as of 25 Oct 2020

Vocab	Records	Terms
AAT	70,959	400,334

Euromed 2020: Getty Vocabularies

Scope of AAT

Associated Concepts

Terms for all abstract concepts and phenomena that relate to the study and execution of various areas of human thought and activity, including architecture and art in all media, as well as related disciplines. Also covered here are theoretical and critical concerns, ideologies, attitudes, and social or cultural movements

[beauty](#), [balance](#), [connoisseurship](#), [metaphor](#), [socialism](#)

Physical Attributes

Terms for the perceptible or measurable characteristics of materials and artifacts as well as features of materials and artifacts that are not separable as components. Included are characteristics such as size and shape, chemical properties of materials, qualities of texture and hardness, and features such as surface ornament and

[borders](#), [round](#), [waterlogged](#), [brittleness](#)

Styles and Periods

The names of art and architecture styles, historical periods, and art movements. Names of peoples, cultures, individuals, and sites are included if they designate distinct styles or periods

[Yoruba](#), [Louis XIV](#)

Agents

Terms for designations of people, groups of people, and organizations identified by occupation or activity, by physical or mental characteristics, or by social role or condition

[printmakers](#), [landscape architects](#), [corporations](#), [religious orders](#) Animals will also be included in this facet

Activities

Terms for areas of endeavor, physical and mental actions, discrete occurrences, systematic sequences of actions, methods employed toward a certain end, and processes occurring in materials or objects. Activities may range from branches of learning and professional fields to specific life events, from mentally executed tasks to processes performed on or with materials and objects, from single physical actions to complex games

[archaeology](#), [engineering](#), [analyzing](#), [contests](#), [exhibitions](#), [running](#), [drawing \(image-making\)](#), [corrosion](#)

Materials

Terms for physical substances, whether naturally or synthetically derived. These range from specific materials to types of materials designed by their function, such as colorants, and from raw materials to those that have been formed or processed into products that are used in fabricating structures or objects

[iron](#), [clay](#), [adhesive](#), [emulsifier](#), [artificial ivory](#), [millwork](#)

Objects

Terms for discrete tangible or visible things that are inanimate and produced by human endeavor; that is, that are either fabricated or given form by human activity. These range, in physical form, from built works to images and written documents. They range in purpose from utilitarian to the aesthetic. Also included are landscape features that provide the context for the built environment

[paintings](#), [amphorae](#), [façades](#), [cathedrals](#), [Brewster chairs](#), [gardens](#)

Brand Names

Names for materials, processes, and objects having names that are under trademark protection

[Agfacolor \(TM\)](#) [Araldite \(TM\)](#) [Arches paper \(R\)](#)

Euromed 2020: Getty Vocabularies



AAT Sample Record

AAT, Art & Architecture Thesaurus®
<http://vocab.getty.edu/page/aat/300041363>

- [partial record]
- preferred term is flagged, but not required to use it; based on local rules
- IDs for record and for terms

Getty

ID: 300190536

Terms:

steel engravings (pref, en)

[1000041363]

Qualifier: visual works
 steel engraving (en)

[1000299348]

Qualifier: visual work

鋼版刻印 (zh) [1000551901]

gāng bǎn kè yìn (zh) [1000551903]

staaigravures (nl) [1000482814]

gravures sur acier (fr)

[1000304335]

grabados al acero (es)

[1000429838]

Stahlstiche (de) [1000655952]

Associative Relationships

produced by ... steel engraving (printing process) [300190536]

Hierarchical Relationships (poly)

Objects Facet

... Visual and Verbal Communication (G)

... Visual Works (hierarchy name) (G)

... visual works (works) (G)

... <visual works by material or technique> (G)

... prints (visual works) (G)

... <prints by process or technique> (G)

... <prints by process: transfer method> (G)

... intaglio prints (G)

... engravings (prints) (G)

... steel engravings (visual works) (G)

Note: Prints made by the process of "steel engraving (printing process)," in which plates of steel or steel-faced copper are used, having replaced the use of less durable copper plates in the early 19th century

Chinese (traditional) 以鋼版雕刻程序製成的版畫
Dutch Gravures waarbij de afbeelding is gesneden in een stalen plaat.

German Druck, der im Verfahren des Stahlstichs hergestellt wurde.

Spanish Estampas realizadas mediante el proceso de grabado en acero....

Contributors: VP,CHIN,AS,RKD,lfM-SMB-PK,CDPB-DIBAM

Sources: Koschatzky, Die Kunst der Graphik (1988); Lucie-Smith, Thames & Hudson Dictionary of Art Terms (1986); Newman, Innovative Printmaking (1997)

- Top of the AAT hierarchies
- Objects Facet
 - Visual and Verbal Communication (hierarchy name)
 - Visual Works (hierarchy name)
 - visual works (works)
 - <visual works by material or technique>
 - photographs
 - <photographs by technique>
 - <photographs by picture-taking technique>
 - aerial photographs
 - chronophotographs
 - instantaneous photographs
 - motion photographs
 - photobooth pictures
 - photomicrographs
 - radiographs
 - beta radiographs
 - x-radiographs
 - snapshots
 - space photographs
 - staged photographs
 - stereoscopic photographs
 - anaglyphs
 - half stereographs
 - parallax stereograms
 - stereographs
 - tissue stereographs

View of the AAT hierarchy

- Sub-facets (called "hierarchies") establish the context of the term
- Guide terms in angled brackets

Work type:
 stereoscopic photograph



Getty

Euromed 2020: Getty Vocabularies

View of the terms for a concept in AAT record

<http://vocab.getty.edu/page/aat/300162872>

AAT subject_id **300162872**

Terms:

stereoscopic photographs (preferred,C,U,English-P,D,U,PN)
stereoscopic photograph (C,U,English,AD,U,SN)
stereoview (C,U,English,AD,U,SN)
photographs, stereoscopic (C,U,English,UF,U,N)
stereograms (stereoscopic photographs) (C,U,English,UF,U,N)
stereo pairs (C,U,English,UF,U,N)
stereophotographs (C,U,English,UF,U,N)
stereo photographs (C,U,English,UF,U,N)
stereos (photographs) (C,U,English,UF,U,N)
stereo views (C,U,English,UF,U,N)
stereoviews (C,U,English,UF,U,N)
stereoscopic views (C,U,English,UF,U,N)
views, stereo (C,U,English,UF,U,N)
stereofoto's (C,U,Dutch-P,D,U,U)
stereofoto (C,U,Dutch,AD,U,U)
stereoscoopfoto (C,U,Dutch,UF,U,U)
stereoscoopfoto's (C,U,Dutch,UF,U,U)
stéréogramme (C,U,French-P,AD,U,MSN)
coppie stereoscopiche (C,U,Italian-P,D,U,PN)
fotografías estereoscópicas (obras visuales) (C,U,Spanish-P,D,U,PN)
fotografía estereoscópica (obra visual) (C,U,Spanish,AD,U,SN)

- Terms for a single item, language
- Some systems or local cataloging rules do not allow linking at the term level

Work type:

stereoscopic photograph
AAT term_id 1000299214



Euromed 2020: Getty Vocabularies

Scope of AAT

Complying with standards and rules

Editorial rules are drawn from common practice, represent best practice

Example: AAT Preferred terms

- Preferred term: The word or phrase used most often in authoritative sources, scholarly literature to refer to the concept in that language

still lifes or **still liVes** ?



- Preference for POS may vary
- Synonymity: All terms in one record must be exact synonyms, used interchangeably for the concept
- With allowances for parts of speech, some historical usage

Getty

still lifes (preferred,C,U,LC,English-P,D,U,PN)
still life (C,U,English,AD,U,SN)
still-life (C,U,English,AD,U,SN)
still lives (C,U,English,UF,U,N)
still-lifes (C,U,English,UF,U,N)
静物畫 (C,U,Chinese (traditional)-P,D,U,U)
静物 (C,U,Chinese (traditional),UF,U,U)
jǐng wù huà (C,U,Chinese (transliterated Hanyu)
jing wu hua (C,U,Chinese (transliterated Pinyin)
ching wu hua (C,U,Chinese (transliterated Wade)
stillevens (C,U,Dutch-P,D,U,U)
stilleven (C,U,Dutch,AD,U,PN)
natura morta (C,U,Italian,UF,U,N)
(French-P,D,U,PN)
Still-Leben (visuelles Werk) (C,U,German,D,B)
Stilleben (visuelles Werk) (C,U,German-P,AD,U,PN)
Stilleben (C,U,German,UF,U,PN)
natura morta (C,U,Italian-P,D,U,PN)
naturaleza muerta (C,U,Spanish-P,D,U,PN)
naturalezas muertas (C,U,Spanish,AD,U,PN)

Euromed 2020: Getty Vocabularies

Achilles Painter
 Abasi, Riza
 رضا عباسی
 An Qi
 安岐
 Bartolo di Fredi
 Galleria degli Uffizi
 Gilbert & George
 Katsushika Hokusai
 Kicking Bear
 Master of Boi
 Méraud, Pierre-Antoine,
 père
 Ngapatari, Hakaraia
 O'Keeffe, Georgia
 Pei, I. M.
 Rothko, Mark
 Sa'īd, Mahmūd
 Skidmore, Owings &
 Merrill
 unknown Mende
 Vikramaditya I
 Wren, Christopher
 Zeuxiades
 Ζευξιάδης

What is ULAN?



ULAN, the Union List of Artist Names®

ULAN contains **personal names**, relationships, biographical information for artists, architects, firms, studios, repositories, patrons, sitters, both named and anonymous

<https://www.getty.edu/research/tools/vocabularies/ulan/index.html>
<https://www.getty.edu/research/tools/vocabularies/guidelines/index.html#ulan>

- For people and corporate bodies associated with the creation and documentation of art, architecture, and in related disciplines
- Includes current and historical associative relationships (e.g., students to teachers; firm and studios to members)

Totals as of 25 Oct 2020

Vocab	Records	Terms
ULAN	313, 260	935,147

Euromed 2020: Getty Vocabularies

Scope of ULAN

Persons, Artists

.....Agami, Alyssa (Mexican sculptor, born 1955)
Abbate, Ercole dell' (Italian painter, 1563/1573-1613)
Abeyta, Narciso (Native American painter, 1918-1998)
 Ashmolean Master (Early Cycladic sculptor, active 25th century BCE)
 An, Yuan (Chinese architect, active 1404-1420)

Corporate Bodies

.....Abbate family, dell' (Modenese painters, active 16th-17th centuries)
Abbot Hall Art Gallery (British museum, contemporary)
Abdullah Freres (Turkish photography and painting studio, 1858-1899)

Non-Artists

.....Aah-Hotep, Queen (Egyptian queen, ca. 1560- 1530 BCE)
Abelard, Peter (French theologian, philosopher, 1079-1142)
Ancaster, Mary Bertie, Duchess of (English aristocrat, died 1793)

Unidentified Named People and Firms

.....Abady, Sheila (artist)
Facijs, Friedrich Wilhelm (artist, born 1764)

Unknown People by Culture

.....unknown Abakwariga (Abakwariga cultural designation)
 unknown Abbevillian (Abbevillian cultural designation)
 unknown Aztec (Aztec cultural designation)

Getty

Euromed 2020: Getty Vocabularies



ULAN Sample Record

ULAN, the Union List of Artist Names®

<http://vocab.getty.edu/page/ulan/500060426>

Linked to other vocabularies,
Other resources (LOC)

ID: 500060426

Names:

Katsushika Hokusai (en,ja-trans) [1500235399]

Hokusai (en,ja-trans) [1500235408]

Date: name taken by the artist in 1798, and used for his prints and paintings

Start: 1798 **End:** 9999

葛飾 北斎 (ja) [1500705416]

Shunrō (en,ja-trans) **Date:** gō (artist's name), used in his years of training, when painting hosoban (narrow prints) [1500235400]

Sōri (en,ja-trans) **Date:** gō used in early career, named taken from his Rinpa-school master Tawaraya Sōri [1500235401]

Kakō (en,ja-trans) **Date:** used for the production of commercial prints and books [1500235402]

Tatsumasa (en,ja-trans) **Date:** used for the production of privately published illustrations [1500235403]

Display bio: (Japanese printmaker, painter, 1760-1849

estimated

Birth date: 1760

Death date: 1849

Nationalities:

Japanese (pref)

Roles:

artist
printmaker
painter
designer
calligrapher
draftsman
landscapist
marine artist
figure artist
ukiyo-e artist

Gender: male

Birth and Death Places:

Born: Tokyo (Kanto, Japan) (inhab place)

Died: Tokyo (Kanto, Japan) (inhab place)

TGN

Events:

active: Tokyo (Kanto, Japan) (inhab place)
..... in Edo, modern-day Tokyo

Associative Relationships:

teacher of Taito, Katsushika, II
.....(Japanese printmaker, active ca. 1820-1850)

child of Nakajima Ise

.....(Japanese mirror maker, 18th century)

possibly identified with ... Tōshūsai Sharaku

..... (Japanese printmaker, active 1794-1795)

Contributors:

VP, Avery, GRL, BHA, CCA

Sources: Bowie, Drawings of Hokusai (1964); Grove Dictionary of Art online (1999-2002); Library of Congress Authorities n 80043599 ; Metropolitan Museum of Art [online] (2003-); Bouquillard, Hokusai: First Manga Master (2007)

Euromed 2020: Getty Vocabularies

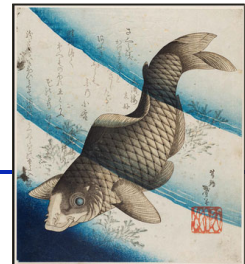
Scope of ULAN

Rich data and relationships

- E.g., ULAN, reciprocal relationships teacher/student
1101 person – **teacher of** – person
1102 person – **student of** – person

Japanese printmaker *Katsushika Hokusai* [was] **teacher of** *Katsushika Taito II*

- As with other relationships in vocabulary records, the relationship may be circumscribed with dates



ID: 500060426

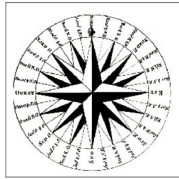
Page Link: <http://vocab.getty.edu/page/ulan/500060426>

Katsushika Hokusai (Japanese printmaker and painter, 1760-1849)

Relationship Type	Record Type	Name	Display Date	Start	End
1101 - teacher of	Person	Taito, Katsushika, II	ca. 1820-before 1830	1819	1830
1102 - student of	Person	Shunshō, Katsukawa	ca. 1778-1793	1777	1793

Abthugni
 Angel Falls
 Athínaí
 Αθήναι
 Bhārat
 Býći Skála
 Bora-Bora
 Casablanca
 Chichén Itzá
 Cueva Cerro Sota
 Donner Pass
 Dos Cabezas Site
 Firenze
 Fort Rouillé
 Gdansk
 Genna Bogai, Arcu
 Святой Престол
 Jabal Mayyah
 Kush
 Luxor
 מִישְׂרָאֵל
 Mare Cantabricum
 Nan Madol Ruins
 Rapa Nui
 臺北

What is TGN?



TGN, Getty Thesaurus of Geographic Names®

TGN contains **place names** relevant to art, architecture, and related disciplines

<https://www.getty.edu/research/tools/vocabularies/tgn/index.html>
<https://www.getty.edu/research/tools/vocabularies/guidelines/index.html#tgn>

- Names, relationships, place types, dates, notes, coordinates
- Scope includes cities, nations, empires, physical features
- Focus on historical, regions, archaeological sites, lost settlements
- Built upon a skeleton of the modern world, as much as needed
- Thesaurus compliant with ISO standards
- TGN is not GIS, but may be linked to GIS, maps, etc.
- Co-references other geographic resources

Totals as of 25 Oct 2020

Vocab	Records	Terms
TGN	2,532,907	4,088,303

Euromed 2020: Getty Vocabularies

Scope of TGN

World

....Abbasid Caliphate (historical region)
Africa (continent)
Abyssinia (historical) (general region)
Aden, Gulf of
Ethiopia (nation)
Tigray (state)
Āksum (inhabited place)
Gonja Kingdom (former nation/state/empire)

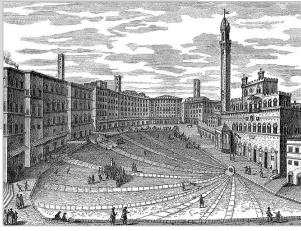
Extraterrestrial Places

....Milky Way Galaxy (galaxy)
Solar System (planetary system)
Jupiter (planet)
Metis (moon)

- Historical and current world, administrative and physical features in same hierarchy
- Small number of Extraterrestrial Places

Getty

Euromed 2020: Getty Vocabularies



TGN Sample Record

TGN, Getty Thesaurus of Geographic Names®

<http://vocab.getty.edu/page/tgn/7011179>

Linked to other vocabularies,
Other resources (LOC, NGA)

ID: 7011179

Names:

Siena (pref,it,en) [47413]
 Sienna [140808]
 Sienne (fr) [1002860953]
 Σιένα (el) [1002038443]
 锡耶纳 (zh) [1002038446]
 Сиена (ru) [1002038445]
 シエーナ (ja) [1002038441]
 Seniese (adj) (en) [1159549]
 Senae (hist.) [181416]
Date: Medieval
Start: 800 **End:** 1500
 Sena Julia (hist.) (la) [181415]
 Sena (hist.) [181414] **Date:** Etruscan

Hierarchical Relationships (poly.)

World (facet)
 .. Europe (continent)
 ... Italy (nation)
 Tuscany (region)
 Siena (province)
 Siena (inhabited place)

World (facet)
 .. Europe (continent)
 ... Italian Peninsula (peninsula)
 Etruria (former confederation)
 Siena (inhabited place)
 Historical: Late Etruscan

Associative Relationships

ally of Pisa ..(inhabited place) [7006082]
 Ghibelline allies, 13th-14th centuries

Contributors:

VP,BHA, Avery,GRI

Sources: Annuario Generale (1980); NGA/NIMA database (2003-) -129709; Library of Congress Authorities n 79013822; UNESCO World Heritage Centre [online] (1992-); VIAF: Virtual International Authority File [online] (2009-) VIAF ID: 239842096 (Geographic)

Place Types

inhabited place
Date: settled by Etruscans (flourished 6th century BCE)

city
 archiepiscopal see
 commune (administrative)

AAT

Date: since 1125
 cultural center
 university center
 world heritage site

Lat: 43 19 07 N (43.3180)
Long: 011 19 50 E (11.3300)
Elevation: 1056.430 feet (322.0000 meters)

Note: Siena was founded as an Etruscan hill town; later was the Roman city of Sena Julia (3rd century BCE). It flourished under the Lombard kings (6th century CE) and was Medieval self-governing commune ...

Euromed 2020: Getty Vocabularies

Adorazione dei Magi
 Apedemak
 Baby Jaguar
 Death and the Miser
 Ehecatl
 Ganesh
 Hades
 Hercules
 Herakles
 Mithras
 Niflheim
 Noli me tangere
 Olouaipilele
 Prajnaparamita
 Penance of Indra
 Reclining Buddha
 Bouddha couché
 涅槃仏
 Storming the Bastille
 The Divine Comedy
 Tumatauenga
 Virgin Hodegetria
 World War I
 Xibalba

What is IA?



IA, the Getty Iconography Authority™

IA contains **iconography names** describing topics relevant to art, architecture, and related disciplines

<https://www.getty.edu/research/tools/vocabularies/cona/index.html>

<https://www.getty.edu/research/tools/vocabularies/guidelines/index.html#ia>

- Includes the proper names of subjects not covered by other Getty Vocabularies
- Scope is multicultural and multilingual, grows through contributions
- Includes links to other sources where there is overlap, such as Iconclass and US Library of Congress subject authorities
- The IA is compliant with the Subject Authority of CDWA and CCO (*Categories for the description of Works of Art and Cataloging Cultural Objects*)
- The IA has a thesaural structure; it includes equivalence, associative, and hierarchical relationships
- The IA is linked to the other Getty Vocabularies

Totals as of 25 Oct 2020

Vocab	Records	Terms
IA	1,968	5,527

Euromed 2020: Getty Vocabularies

Scope of IA

Religion, Mythology, Legend

-Buddhist Iconography
-Buddhist allegory, symbolism, theme
-Buddhist characters
-Buddhist legendary places
-Buddhist narratives
-Four Encounters (Buddhist narrative)

Literature and Performing Arts

-Literary characters
-Beatrice (Italian literary character, Dante, ca. 1293)

Named Events

-Ancient history (Egyptian, Greek, Roman, other western)
-Battle of Salamis (Greek history, 480 BCE)

Miscellaneous Topics

-Miscellaneous Legendary Places
-Cockaigne (legendary place, medieval western)

Getty

Euromed 2020: Getty Vocabularies

IA Sample Record



Names in multiple languages

Users may choose the name appropriate for their needs

Getty

IA, the Getty Iconography Authority™

<http://vocab.getty.edu/page/ia/901000085>

ID 901000085

Names

- Avalokiteśvara (en) [5000191]
- Avalokitesvara [5001067]
- Avalokitesvara [5003150]
- अवलोकितेश्वर (sa) [5001068]
- ཐུན་རས་གཟིགས (bo) [5002308]
- Spyan ras gzigs [5002309]

Hierarchical Relationships

- Top of the IA hierarchies
- Legend, Religion, Mythology
- Buddhist iconography
- Buddhist characters
- Avalokiteshvara (Buddhist iconography)

AAT links

- role/characteristic is ... bodhisattva
- symbolic attribute is ... lotus
- culture/religion is ... Mahayana (Buddhism)
- culture/religion is ... Theravada (Buddhism)

Associative Relationships

- associated with Krishna (Hindu iconography)
- counterpart is Guanyin (Buddhist iconography)

Note The bodhisattva of infinite compassion and mercy; embodies the compassion of all Buddhas. This bodhisattva is portrayed in different cultures as either female or male...

Contributors VP, BHA

Sources Bowker, Oxford Dictionary of World Religions (1997); Huntington, Art of Ancient India (1985); Encyclopedia Britannica Online (2002-);

LC: LC control no.: sh 85010492

AAT
TGN
ULAN
CONA

Euromed 2020: Getty Vocabularies

Bhimesvara Temple
 Bradshaw rock
 paintings
 Case Study House 21
 Château de Versailles
 Empire State Building
 En liberté comme toi
 Himeji Castle
 姫路城
 Irises
 Kashmir Gate
 Mona Lisa
 La Gioconda
 Model for the Façade
 of San Lorenzo
 MS Ludwig XV
 Pantheon
 Portrait of Napoleon
 Ronda di notte
 Square Ting Vessel
 of Duke Kang
 西周早期 康侯方鼎



What is CONA?

CONA, Cultural Objects Name Authority®

CONA compiles **titles/names** with other metadata for works of art, architecture, and other cultural works

<https://www.getty.edu/research/tools/vocabularies/cona/index.html>

<https://www.getty.edu/research/tools/vocabularies/guidelines/index.html#cona>

- For works current and historical, documented as items or in groups, whether extant, destroyed, or never built
- May be used to record works depicted in visual surrogates, architecture, multiples (prints), and for other purposes

Totals as of 25 Oct 2020

Vocab	Records	Terms
CONA	6,763	13,431

Euromed 2020: Getty Vocabularies

Scope of CONA

Built Works

Abbotsford House (country house; designed by William Atkinson, (British architect, ca. 1773-1...; constructed 1817-1819, 1822-1825; Melrose (Scottish Borders, Scotland, UK)...

Attagudi (Siva temple) (temple (building); patron: Ganapatideva; unknown Telingana; first quarter of 13th century, Chandravalli (Karnātaka, India) ...)

Movable Works

Abraham Lincoln and His Second Son Thomas (Tad) (albumen print; Alexander Gardner (American, born Scotland, 1821 - 1882) (Am...; April 9, 1865; J. Paul Getty Museum at the Getty Center (Los Angeles, Los A...; 85.XM.285)

Boy with a Dragon (sculpture (visual works); Gian Lorenzo Bernini (Italian, 1598 - 1680); about 1617; J. Paul Getty Museum at the Getty Center (Los Angeles, Los A...; 87.SA.42)

Visual Surrogates

Foto arte minore / Max Hutzel (collection (object grouping); photographers: Max Hutzel and Roberto Sigismondi; 1960-1990)

Conceptual Works

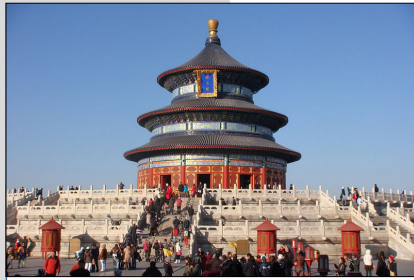
Adam and Eve (engraving (print); Albrecht Dürer (German painter, printmaker, 1471-1528); 1504;...)

Unidentified Named Works

Paese (painting (visual work); "Breughel," attributed to in inventory; probably 16th/17th centuries; undetermined)

Getty

Euromed 2020: Getty Vocabularies



CONA Sample Record

- Multiple contributors
- Co-reference multiple IDs for the same work

CONA, Cultural Objects Name Authority®

<http://vocab.getty.edu/page/cona/700000141>

CONA ID: 700002923

Titles/Names:

Temple of Heaven (en) [1000016889]
 Tian Tan (zh-tr) [1000016890]
 T'ien-t'an (zh-trl) [1000019041]
 Tiantan [1000016892]
 Temple du Ciel (fr) [1000019264]
 Templo del Cielo (es) [1000019265]
 Himmelstempel (de) [1000019266]
 天壇 (zh) [1000016894]
 天坛 (zh) [1000016893]
 천단 (ko) [1000019043]

Getty

Catalog Level: item

Work Types:
 building complex
 temple

AAT

Classification:
 architecture

Creator Display:

first built by Ming Chengzu (1360-1424); extended by Ming Shizong (1507-1567); renovated by Qianlong (1711-1799)

ULAN

[ULAN 500356295]
 Role: patron/38121
 [ULAN 500372663]
 Role: patron/38121
 [ULAN 500372572]
 Role: patron/38121

Locations:

Location current Beijing (Beijing Shi (municipality), (nation) Address Note: 39°57'05"N 116°24'36"E

TGN

Dimensions [display] entire complex: 237 hecatres
Mat & Tech [display] wood and stone
 wood AAT 300011914 | stone AAT 300011176

AAT

Style: Chinese [AAT 300018322] | Taoist [AAT 300143666]

General Subject:

architecture **Type:** isness
 religion and mythology **Extent:** purpose

Specific Subjects:

Heaven [AAT 300185658] **Extent:** dedication
 Chinese heaven [IA 901002236]

Contributors:

JPGM VP GRISC BHA BWR

Sources: Built Works Registry **BWR3792244**; Library of Congress Authorities online (2002-) **n2011019454**; Fodor's Travel (2016); J. Paul Getty Museum, collections online (2000-); Great Buildings Online (1997-); UNESCO World Heritage Centre [online] (1992-) **Ref: 881**

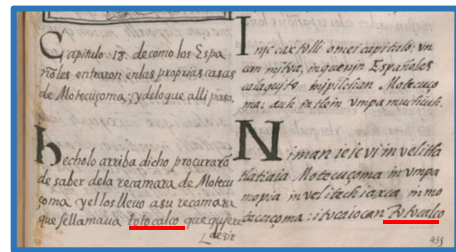
AAT
 TGN
 ULAN
 CONA
 CONA IA

Scope of CONA

Recording information about lost works

- Work was documented in contemporary sources, is now lost

CONA ID 700009685 **Class:** architecture
Work Type: storehouse **Work Type:** destroyed work
Title: Totocalco **Title:** Totocalli
Creator: unknown Aztec; under Montezuma II
Dimensions: unavailable **Materials:** masonry construction
Current Location: Mexico City (Mexico) 19 26 06 N, 99 07 53 W
Location: Sacred Precinct (Tenochtitlan, Mexico) **Type:** former
Date: 15th century
Related Work: distinguished from Totocalco (aviary)
General Subject: architecture **Type:** isness
Note: Storehouse in 16th-century Tenochtitlan (now Mexico City). Totocalco and Totocalli were terms used interchangeably in different sources to refer to one of two places, the first was a storehouse to the east of the main temple precinct where Mexica precious goods were kept, while the other was housed birds of the realm.
Contributors: FloCo VP
Sources: GRI, FloCo terminology (2019-); Sahagún, Historia general (1989) v3:1189; Simeón, Diccionario nahuatl (1992) v13:49



Florentine Codex, Book 12, Ch 18, Folio 28 recto, 1577



Tenochtitlan, map published in Nuremberg in 1524

Getty

<https://blogs.getty.edu/iris/who-writes-history-competing-narratives-about-the-conquest-of-mexico-and-the-fall-of-the-aztec-empire/>

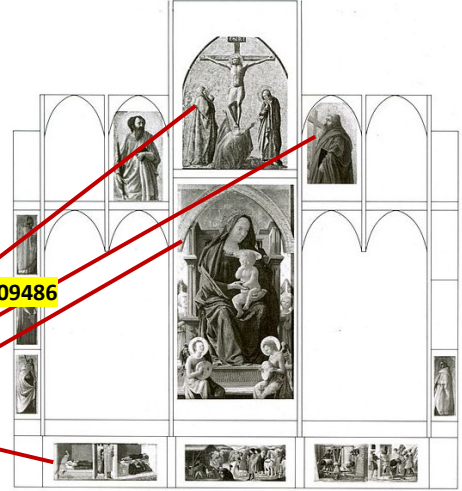
Euromed 2020: Getty Vocabularies

Scope of CONA

Recording information about lost works

- Reconstructed disassembled works held in different repositories or locations
- Common with manuscripts, paintings, sculpture, architecture
- May be varying opinions on reconstructions

Proposed reconstruction of Pisa Altarpiece, Masaccio



CONA ID 700009486 Proposed reconstruction of fragments of Masaccio's Pisan altarpiece (after C. Gardner von Teuffel 1977).

CONA

```

+ Movable Works (facet (controlled vocabulary); N/A; N/A) 700000002
+ Movable Works by class: drawings, paintings, prints, other tw 700009486
  Pisa Altarpiece (disassembled work; Masaccio (Italian paint 700009486
  Adoration of the Magi [N] (paintings, panel (paintings by f 700009691
  Martyrdoms of St Peter and St Paul [N] (paintings, panel 700009690
  Saint Andrew [N] (painting (visual work), Masaccio (Florent 700002117
  Saint Paul [N] (paintings, panel (paintings by form); Mas 700009694
  St Julian and St Nicholas [N] (paintings, panel (paintings 700009692
  The Crucifixion [N] (paintings, panel (paintings by form); 700009693
  Virgin and Child [N] (paintings, panel (paintings by form); 700009689
  
```

Getty

Scope of CONA

Linking to works depicted in other works



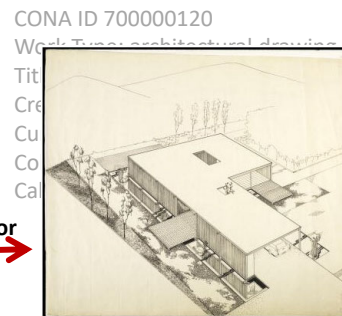
- House is depicted in a drawing by architect and photograph by Julius Shulman
- Also for linking visual surrogates linked to the works depicted

Getty

CONA record for the house

CONA ID 700000090
Classification architecture
Work Type: house
Title: Case Study House No. 21
Title: Bailey House Title: CSH #21
Creator: architect: Pierre Koenig
Creation Date: 1956-1958; renovated 1998
Dimensions: 1 story, 1320 square feet, 4 rooms and 2 baths, on a 110 x 160 foot lot
Mat & Tech: steel frame and flat roof deck
Current Location: Los Angeles (California, USA) **Address Note:** 34.116634 -118.391623; 038 Wonderland Park Avenue, Hollywood Hills, Los Angeles, 90046

preparatory for
based on



depicts
depicted in



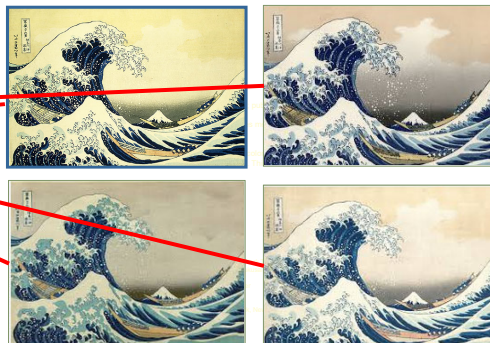
Euromed 2020: Getty Vocabularies

Scope of CONA

Conceptual works, multiples, series of works



..... Thirty-six Views of Mount Fuji: [N] Series
..... Great Wave off Kanagawa (multiple)
..... L'arc de la vague au large de Kanagawa [N]
..... The Great Wave [N]
..... The Great Wave off Kanagawa [N]
..... The Great Wave off Kanagawa [N]
..... Under the Wave off Kanagawa [N]
..... Under the Wave off Kanagawa [N]
..... Under the Wave off Kanagawa [N]
..... Under the Wave off Kanagawa [N]



Unique physical item
→
conceptual record for print
→
a series

Getty

Euromed 2020: Getty Vocabularies



Getty

Getty Vocabularies: The Community

- Target audiences are researchers, art museums, special collections, art libraries, and archaeological and conservation projects, although other audiences are frequent users as well
- Developers and information providers
- The researchers themselves are also now users

Contributors to the Getty Vocabularies

- Institutions that catalog or index art, architecture, related disciplines; translation consortia

Users of the Getty Vocabularies

- Catalogers, researchers, vendors (e.g., TMS)
- Examples of users include Europeana, CHIN, American Art Collaborative (AAC), Linked.Art
- Through links or contributions to other resources, e.g., VIAF (Virtual International Authority File)

Euromed 2020: Getty Vocabularies

Contributors to the Getty Vocabularies

<https://www.getty.edu/research/tools/vocabularies/contribute.html>



Contribute to the Getty Vocabularies

The Getty vocabularies are compiled resources that grow through contributions from Getty projects and other institutions. Contributors to the Getty vocabularies include museums, libraries, archives, special collections, visual resources collections, bibliographic and other documentation projects, and large translation projects.

- Contributors agree to conditions via online click through
- Proposed contribution is reviewed by governance groups, accepted
- Send sample data, send full data contribution in bulk
- Processed and loaded by Getty
- Published in various formats monthly

Getty

Euromed 2020: Getty Vocabularies

Who are the contributors?

- Getty projects
- Over 300 institutions, consortia, research projects

How is the data generated?

- Contrib. may research and create original data for the purpose of contribution
E.g., translations: Spanish, Dutch, Chinese, German, French, Croatian, Portuguese, Japanese
- Or may map data already collected in the course of their own work
E.g., repositories and documentation projects, research projects
- Contributions = 10s of thousands per year

Examples of Contributors to Vocabularies

Provenance Index	GRI Photo Archive	GCI	Getty
GRI Special Collections	GRI Library	JPGM	
Netherlands Institute for Art History (RKD)			National documentation agencies, consortia
Academia Sinica of Taiwan			
Canadian Heritage Information Network			
Belgian Initiative to Broaden the Network for the French Text			
Collaborative Vocabulary of Arts and Architecture, Brazil			
Staatliche Museen zu Berlin Preussischer Kulturbesitz			
Centro de Documentación de Bienes Patrimoniales, Santiago			Image collections, libraries
Tokyo National Research Institute for Cultural Properties			
Built Works Registry			
Istituto Centrale per il Catalogo e la Documentazione, Rome			
Courtauld Institute			Art repositories
Canadian Centre for Architecture (CCA)			
Avery Architectural & Fine Arts Library			
Frick Art Reference Library			
Indiana University Digital Collections			Publishers
Osterreichische Galerie Belvedere			
Bunting Visual Resources Library, U. of New Mexico			Research projects
Pinacoteca do Estado de São Paulo			
Rijksmuseum in Amsterdam			
Israel Museum, Jerusalem			Publishers
Smithsonian National Museum of African Art			
Grove Art online			Research projects
Florentine Codex Initiative (GRI)			
Traditional Chinese Architecture (Vanderbilt, SEU)			

Getty

Contributors to the Getty Vocabularies

- Compiled resources = multiple contributors, separate records for same entity
- Published as unified records for end users
- Rather than clustering, Getty vocabularies merge the data into a homogenous whole
- The attribution to the contributor and sources are retained

LINK back to contributed data

Getty vocabularies merge contributed records



detail of portrait, by Pietro Longhi, in Ca' Rezzonico, Venice

ULAN_500017409

Names:
Guardi, Francesco
Francesco Guardi
Gardi, Francesco
Garde, Francesco
Gardis, Francesco
François Guardi

Nationalities:
Italian
Venetian

Roles:
artist
painter
landscapist

[Links to images](#)



Getty

Users of the Getty Vocabularies

- Online usage
- Vocabularies are always among top resources accessed at GRI

Top 15 GRI-wide page views per month

No.	Page	Views
1	Vocabs: AAT	16,106
2	Vocabs: ULAN	11,826
3	Vocabs: TGN	9,479
4	GRI landing page	5,676
5	GRI list of resources	5,171
6	Exhibition: monumentality	4,273
7	Vocabs: general information	4,245
8	Provenance: search	3,895
9	Library	3,345
10	Provenance: general information	2,690
11	BHA (Bibliography for History of Art)	2,091
12	Photo Archive	1,759
13	GRI: Digital Collections: Turkey photos	1,673
14	Vocabs: CONA	1,489
15	Vocabs: CDWA (cataloging rules for art)	1,143

Getty

vocabularies

Users of the Getty Vocabularies

Month	Unique visitors	Number of visits	Pages	Hits	Bandwidth
Jan 2020	5,838	23,282	7,079,022	7,258,638	158.21 GB
Feb 2020	4,832	70,284	3,485,623	3,662,727	98.46 GB
Mar 2020	5,850	76,705	3,807,539	3,965,035	76.42 GB
Apr 2020	5,870	48,994	4,220,451	4,395,790	98.85 GB
May 2020	5,506	61,111	8,432,795	8,623,338	123.66 GB
Jun 2020	4,946	83,586	7,926,110	8,072,675	127.28 GB
Jul 2020	6,409	50,648	6,408,614	6,555,148	161.38 GB
Aug 2020	5,077	55,552	5,938,987	6,065,860	117.42 GB
Sep 2020	0	0	0	0	0
Oct 2020	0	0	0	0	0
Nov 2020	0	0	0	0	0
Dec 2020	0	0	0	0	0
Total	44,328	470,162	47,299,141	48,599,211	961.69 GB

**Not including robots, worms, or replies with special http address*

- Data release files also have high numbers of users
- Relational Tables, XML, APIs
- Example illustrates LOD with very high use for one month
- AAT is also available at satellite sites in Germany, Taiwan, Chile, the Netherlands
- Vocabularies are available in various vendor systems

Euromed 2020: Getty Vocabularies



Getty Vocabularies: The Future

- Continued contributions focusing on our core mission
- Multilingual, multicultural, inclusive, Ancient Worlds Now
- Make public criteria for contributions, targeted vs opportunistic
- Establish clear guidelines, more pre-processing by contributors
- Methods to aid contributors, training, tools (e.g., OpenRefine, workshops, tutorials)
- Co-referencing of overlapping, similar resources; multiple IDs
- Publication is Open and Free of charge (LOD, and all formats); relational tables and XML may be discontinued
- Formats for export and integration in other resources
 - Advanced and useful to emerging technology
 - Hope to not exclude users who are not wealthy, elite technical support

Euromed 2020: Getty Vocabularies

Goals: Increased multilingual, multicultural, inclusive Vocabularies

Status: Current ULAN is heavily European, but our goal is to add more non-Western

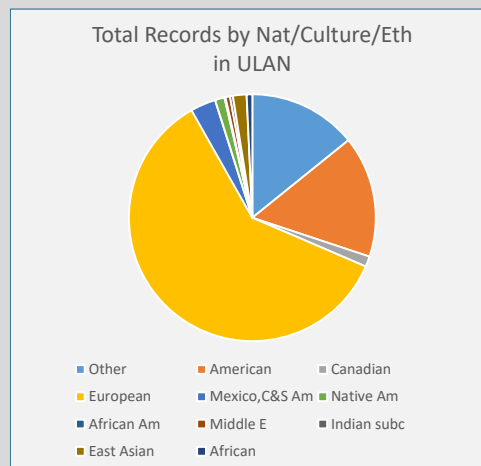
Nat./Cultures in ULAN:

Records total: 305,684 (as of Feb. 2019)
 Nat/cultures total linked: 351,773
[a person may have multiple nationalities, cultures]

Partial list of

Nationality/Culture/Ethnicity

European 212,286
 American 55,933
 African American 517
 Native American, First Nations 4,394 *[Heard]*
 Mexican, Central-South 11,652
 African 2,588
 Middle Eastern 2,006
 Indian subcontinent 1,370
 East Asian 6,270
 Canadian 4,812
 Other 49,945



Euromed 2020: Getty Vocabularies

Goals: Increased multilingual, multicultural, inclusive Vocabularies

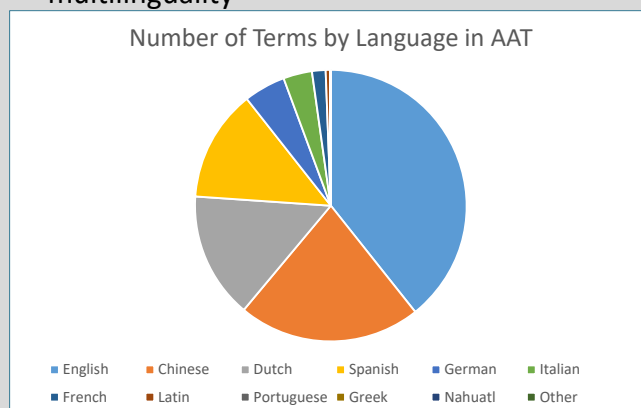
Status: Current AAT is in process of receiving several translations and increasing multilinguality

Languages in AAT

136 different languages as of 27 April 2019

No of terms for top 20 languages

English 165,905
 Chinese 91,839
 Dutch 63,336
 Spanish 56,188
 German 20,959
 Italian 14,444
 French 6,813
 Latin 2,141
 Portuguese 247
 Greek 70
 Nahuatl 49
 etc.



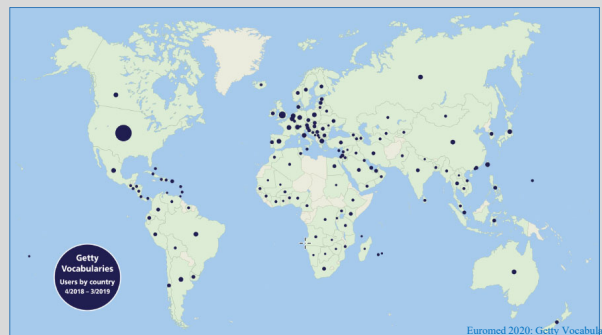
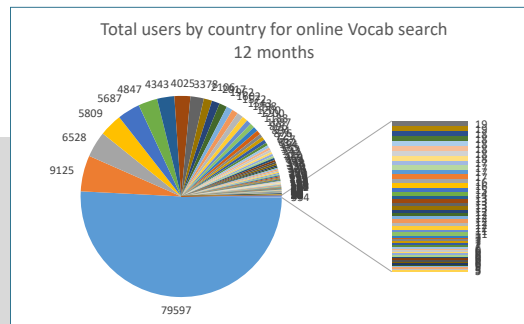
Euromed 2020: Getty Vocabularies

Increasing usage around globe

Distribution of users, Vocab online search

149 countries total; top 50 in a year

United States	79597	Colombia	612
United Kingdom	9125	New Zealand	594
Canada	6528	South Korea	565
Germany	5809	Portugal	553
France	5687	Sweden	542
Italy	4847	Czech Republic	522
Spain	4343	Ireland	480
Netherlands	4025	Ukraine	468
Australia	3378	Hungary	443
Belgium	2106	Slovakia	348
Poland	2017	Turkey	348
Switzerland	1962	Chile	336
Russia	1602	Indonesia	330
Japan	1572	Denmark	324
Mexico	1543	Croatia	306
Brazil	1398	Finland	300
China	1200	Norway	294
Greece	1200	Singapore	283
Argentina	1188	Puerto Rico	270
Taiwan	1087	Egypt	246
Israel	896	Bulgaria	234
Austria	894	unidentified	222
India	876	South Africa	215
Hong Kong	721	Thailand	193
Philippines	667	Saudi Arabia	168



Getty

<https://www.getty.edu/research/tools/vocabularies/obtain/openrefine.html>

The Getty Research Institute

Special Collections Library Search Tools & Databases Scholars & Projects Publica

Getty Vocabularies OpenRefine Reconciliation

Data managers, developers
Vocabularies may now do s
transformation.

- Experienced users of t
the URL: <http://service>
- Detailed instructions fo
OpenRefine Tutorial (P

Note: The tutorial doc
users.

Tool for working with messy
data: cleaning it; transforming
it from one format into
another; and extending it with
web services and external data

Getty

/vocabularies

OpenRefine Artists Names.xlsx Permalink

40254 rows

Show as: rows records Show: 5 10 25 50 rows

Extensions: Wikidata

Match this Cell Match All Identical Cells Cancel

Tamburini, Arnaldo
(Italian painter, count, 1843-1901)

Comment on works: genre, Portraits

Artists Names.xlsx...html 36/38 B, 0 secs left

Getty

Euromed 2020: Getty Vocabularies

Linking the Getty Vocabularies

Improving interconnectivity:

Relationships from the Getty Vocabularies to other resources

Getty

Euromed 2020: Getty Vocabularies

Thank you.

Patricia Harpring
Managing Editor
Getty Vocabulary Program

pharpring@getty.edu
vocab@getty.edu

Getty

Euromed 2020: Getty Vocabularies