



ITWG meeting 2016

Los Angeles

22 August 2016

I really like to be in LA!



Update on the Dutch AAT work

Content

- Recap: Dresden 2014
- New thesaurus Software: Xtree
- New Concepts editorial group
- Translation work
- Editorial questions
- Notable events and developments



Recap meeting Dresden, September 2014

- Dutch translations delivered (Getty AAT 2012) **(processed by GVP!)**
- Synchronisation: No new Getty concepts added to published **Dutch data** since 2007 **(still holds true!)**
- Changes in Dutch data are not processed in Getty AAT **(processed by GVP!)**
- Editorial Issues : New flags for types of translation **(more on that later)**
- New terminology for AAT: 600 new **(processed by GVP!)**
- Search for new software **(we found it!)**



Newsflash: Xtree is the new Software for Dutch translation work!

Xtree is being developed by:



And... The German AAT is also managed in Xtree!

Possible joint development with Institute for Museum Research (Berlin) of the system and webbrowser!

What is xTree?

- A central, web-based tool to administer vocabularies (e.g. thesauri, classifications, lists, taxonomies, folksonomies)
- is semantically interoperable within ISO/DIS 25964-1 (ThesaurusConcept, ThesaurusArray, ConceptGroup), ANSI/NISO Z39.19-2005, ISO 2788 and DIN 1463-1
- is compatible with the data model of BS DD 8723-5
- **has a multi-lingual data model**
- is usable with common web-browser software (e.g. Firefox 3, Internet Explorer 8)
- is easy to handle (e.g. drag and drop)
- uses the museumvok Webservice
- **uses SKOS RDF**
- **is built for collaborative work**
- is developed with Open Source software
- XSD- and RDF-based Webservice

ITWG meeting 2016

RKD NETHERLANDS
INSTITUTE
FOR ART HISTORY



Los Angeles

22 August 2016

Vocabulary Verwaltung Mapping targets Administration Forum Extended Search

Welcome Vocabulary AATnl

Concept: hiërogliefen (nl) (300028721)

Basic data Definitions / Notes (0 | 3) Relations (1 | 2 | 0 | 0) Mappings (0) Forum (0) Administrative Daten

i ID: 300028721
i Type: Concept
i Label:

Label	Qualifier	Language
hieroglyphics		en
	> Sources (7)	
hieroglyph		en
	> Sources (1)	
hieroglyphic scripts		en
	> Sources (2)	
hieroglyphic writing		en
	> Sources (1)	
hieroglyphs		en
	> Sources (1)	
scripts, hieroglyphic		en
	> Sources (1)	
writing, hieroglyphic		en
	> Sources (1)	
hiërogliefen		nl
	> Sources (2)	
hiëroglief		nl
	> Sources (2)	

i URI: <http://aat.vocnet.org/nl/300028721>
i Source:
i Source-ID:
i Status: approved
i Processing state: Undecided

i URI: <http://194.250.19.151/media/ULE/IMAGE/0855.jpg>
i Title: Baryton
i source: Museum für Musikinstrumente der Universität Leipzig
i Copyright: CC BY-NC-SA
i Fotograf:
i Description:
? Preview:

ITWG meeting 2016

RKD NETHERLANDS
INSTITUTE
FOR ART HISTORY



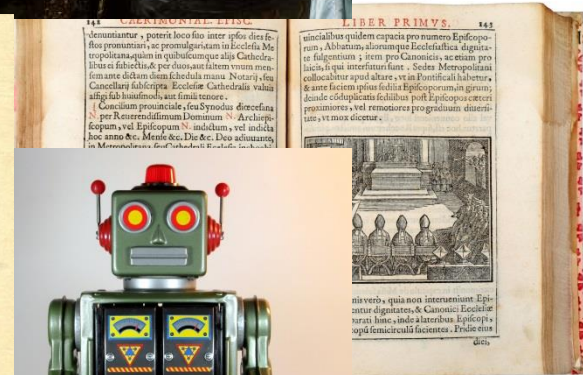
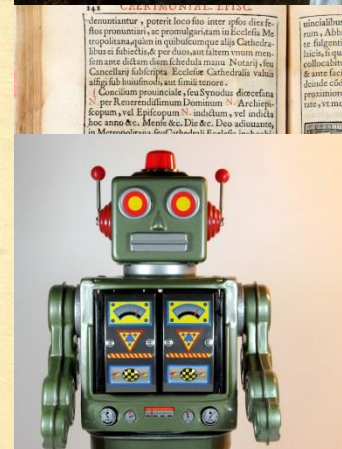
Los Angeles

22 August 2016

Since 2014, 600+ concepts added to the AAT

For instance...

- 300387430: bouquets
- 300391103: caeremonial episcopora
- 300390976: dough wheels
- 300390982: fosphorite
- 300389974: militia pieces
- 300312100: wedding rings
- 300391090: ninjas
- 300391077: robots



ITWG meeting 2016

RKD NETHERLANDS
INSTITUTE
FOR ART HISTORY



Los Angeles

22 August 2016

- And more to come...



'Hansje –in-de-kelder', Rijksmuseum, English: Hansel(or Henry)-in-the-basement (literal translation)



Translation work

The new concepts and scope notes from 2012 to 2016 (May) are being translated by



Universiteit van Amsterdam

UvA Talen

WWW.UVATALEN.NL

6000 concepts

Delivery: December 2016

Check by myself and editorial group in Januari 2017

Import Xtree in Februari 2017

Update, export in Getty XML to GVP in March?

ITWG meeting 2016

RKD NETHERLANDS
INSTITUTE
FOR ART HISTORY



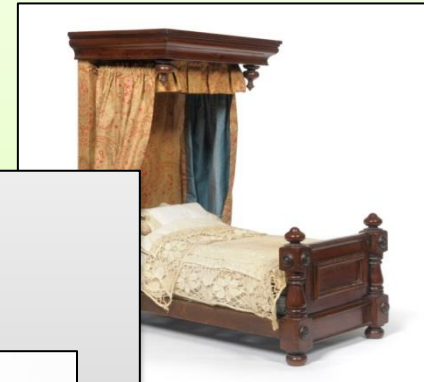
Los Angeles

22 August 2016

Editorial issues

Editorial Issue : **New flag: 'translation N/A'**

Dutch AAT has a set of 'Untranslatables'
How to flag these concepts?
Checked but not translated



New flag: 'literal translation'

When there's no equivalent, but translator can literally translate



'guideboats' becomes 'gidsboten'

ID 300232771

Option for some 'untranslatables' (If it makes sense...)

ITWG meeting 2016

RKD NETHERLANDS
INSTITUTE
FOR ART HISTORY



Los Angeles

22 August 2016

Other notable events and developments

September 2015, presentation on PHAROS and panel discussion at CIDOC, New Delhi. Invited by David Farneth. (I met the President of India!)



CIDOC2015

Comité International pour la Documentation
International Committee for Documentation



ITWG meeting 2016

RKD NETHERLANDS
INSTITUTE
FOR ART HISTORY



Los Angeles

22 August 2016

- November 2015, presentation about terminologies at Symposium: 'The language of heritage. documentary standards for the description and collection management', at Nájera, Spain

del 18 al 20 de noviembre de 2015

El lenguaje del patrimonio: Estándares documentales para la descripción y gestión de colecciones

Los Tesoros de Patrimonio Cultural son recursos que permiten normalizar el vocabulario y los conceptos utilizados para la identificación, descripción y clasificación de los bienes culturales, facilitando el uso de un lenguaje común que permite el intercambio de información entre diferentes tipos de instituciones gestoras de patrimonio. Se trata de instrumentos fundamentales para todos los profesionales que se ocupan de la documentación, investigación y gestión

DESTINATARIOS:

El curso se dirige a todos aquellos profesionales vinculados a la gestión del Patrimonio y a los estudiantes o futuros profesionales de estas materias.

SEDE DEL CURSO:

Escuela de Patrimonio Histórico de Nájera.
Plaza de Santa María s/n
26300 Nájera (La Rioja)





RKD Authority files



RKDartists database published as OpenSearch
API (250.000 persons)

In proces: Linking artistrecords to AAT, ULAN, VIAF, Encartico
and Wikidata

<http://website.rkd.nl/Databases/rkdartists-open-search-webservice>

RKDimages database (237.000 objects) as OpenSearch API (BETA)

- Artwork records are (usually) linked to AAT, Iconclass, recently locations to Geonames and always to RKDartists records for the maker
- The use of the RKDimages database, besides being a reference to RKD documentation and collections, is comparable to the aims of CONA. Namely...



[Peter Paul Rubens](#), De kroning van Mars als overwinnaar, ca. 1616

ITWG meeting 2016

Los Angeles

RKDimages

- Is a resource to link the RKD vocabularies to records for art and architecture (in LOD or otherwise)
- links subject terminology to art and architecture records
- facilitates linking between works, including works held in different repositories but having historical relationships (e.g., studies, disassembled manuscripts, etc)

Object information

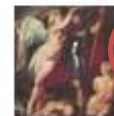
Object category painting
Support/medium canvas, oil paint
Shape/dimensions rectangle (landscape) 203 x 222 cm
Current attribution ● Peter Paul Rubens
Date c. 1616 (1615 - 1617)

Subject

Title De kroning van Mars als overwinnaar
Keywords Greek mythology, coronation, goddess, god (non-Christian), allegory
Iconclass code 92B4
(story of) Mars (Ares)
92B478
triumph of Mars; 'Carro di Marte' (Ripa)

Artistically related

Artistically related to other work



used as model for Peter Paul Rubens, De kroning van de deugd

Provenance

Collection(s)

- private collection Augustus III (Elector of Saxony and King of Poland), Dresden voor de collectie van de Gemäldegalerie Alte Meister
- Staatliche Kunstsammlungen Dresden - Gemäldegalerie Alte Meister, Dresden, inv./cat.nr 956
1743 -

ITWG meeting 2016

RKD NETHERLANDS
INSTITUTE
FOR ART HISTORY



Los Angeles

22 August 2016

Contact

Reem Weda

Information specialist

weda@rkd.nl

www.rkd.nl

www.iconclass.nl

www.aat-ned-nl

