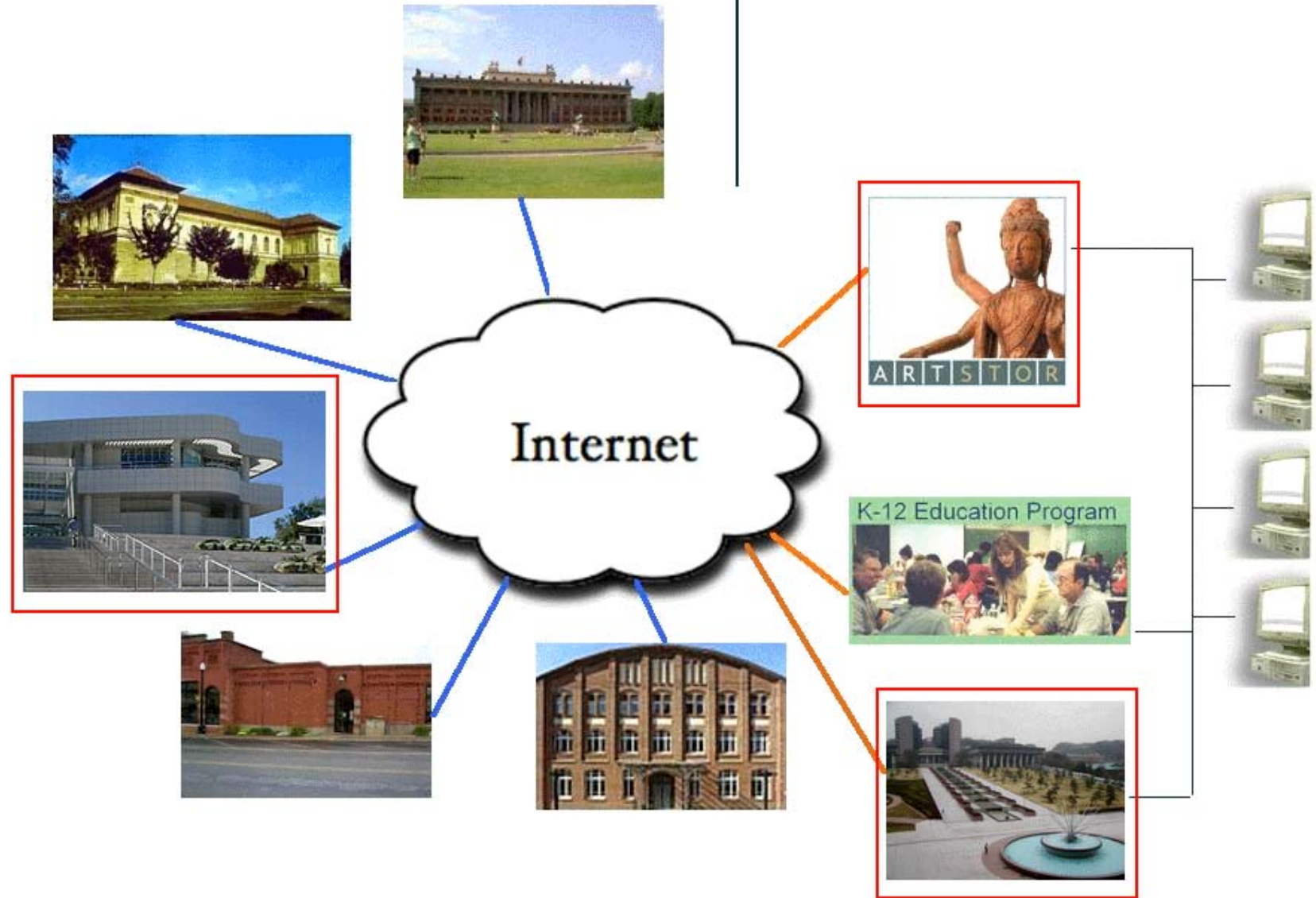


A Data Exchange Model for Collections of Unique Works



Data / Resource Providers

Service Providers



Open Archives Initiative Protocol for
Metadata Harvesting

Data Exchange Protocol

Categories for the Description of Works
of Art

Data Structure Standard

⇒ Data Format Standard
as XML Schema

Cataloging Cultural Objects

Data Content Standard

Art & Architecture Thesaurus
LC Subject Headings
Union List of Artist Names

Data Value
Standards

ARTstor Library - Microsoft Internet Explorer

ARTSTOR Home Back Collections My Image Groups Advanced Search Tools Logon Help Exit

THANK YOU FOR USING ARTSTOR

If you want to be able to make full use of ARTstor, you will need to register through a very simple process.

Registration permits you to add personal notes to images and save groups of images for future reference. You can also access the Tools menu where you will find options for registering for a shared folder and downloading the offline viewer program. In order to request Instructor Privileges, you must be registered and logged on to your account.

KEYWORD SEARCH

VIEW IMAGE GROUPS

REGISTER / LOGON

Need to register? Register

Already registered? Logon

Lost password? Password

BROWSE COLLECTIONS

INSTITUTIONAL COLLECTION

The Getty Research Institute Photo Study Collection : Tapestries
This collection includes 4,215 photographs of medieval and early modern tapestries from European and American collections.

The J. Paul Getty Museum at the Getty Center : Paintings
This collection contains 461 images of works ranging from the fourteenth to the end of the nineteenth century.

GENERAL COLLECTIONS

The Image Gallery
A deep and broad collection of images of world art, architecture, and visual art

SPECIALIZED COLLECTIONS

Art History Survey Collection
Key monuments of world art

Carnegie Arts of the United States
American Art, Architecture, and visual culture from Colonial to 20th Century.

Hartill Archive of Architecture and Allied Arts
An architectural history of the Western world from antiquity to the present.

Huntington Archive of Asian Art
A photographic overview of the art of Asia from 3000 B.C. through the present.

Illustrated Bartsch
European prints from the Renaissance to the 18th Century

Mellon International Dunhuang Archive
Rich documentation of the important Buddhist cave shrines at the Dunhuang oasis site on the Ancient Silk Route.

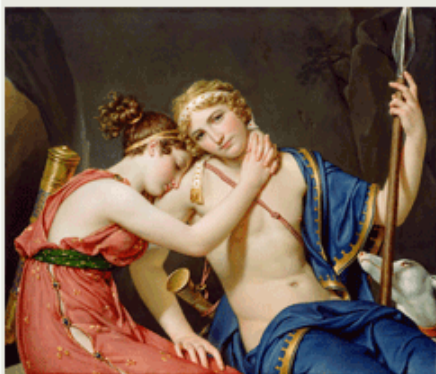
Museum of Modern Art Architecture and Design Collection
20th Century design

Native American Art and Culture from the Smithsonian Institution
Native North American Art and Historic Photographs

Welcome: Guest User

ARTSTOR

Search



About the Collection

The J. Paul Getty Museum's paintings collection continues to grow in breadth and quality, and several important acquisitions have been made in works ranging from the fourteenth to the end of the nineteenth century. This collection contains 461 images.

Grotto of Sarrazine near Nans-sous-Sainte-Anne

Information Image Properties

Image Information

Field	Data
Creator	Gustave Courbet (French, 1819 - 1877)
Culture	French
Title	Grotto of Sarrazine near Nans-sous-Sainte-Anne
Work Type	Paintings
Date	about 1864
Material	Oil on canvas
Measurements	Unframed: 50 x 60 cm (19 11/16 x 23 5/8 in.)
Repository	The J. Paul Getty Museum at the Getty Center 2004.47
	http://www.getty.edu/art/collections/collection_types/c2033760.html
Collection	Paintings in the J. Paul Getty Museum
Source	Data From: J. Paul Getty Museum
Rights	This image has been selected and made available by an institutional user of the ARTstor Digital Library using ARTstor's software tools. ARTstor has not pre-screened or selected this image, and therefore disclaims any liability for any use of this image. Should you have any legal objection to the use of this image, please notify ARTstor's Contact for Legal Notices.

Grotto of Sarrazine near... - The J. Paul Getty Museum at the Getty Center

ARTSTOR TERMS & CONDITIONS + - [Image] [Image] [Image] [Image] [Image] 45.1%

Grotto of Sarrazine near... Gustave Courbet (French, 1819 - 1877)

SAVE * HIDE CAPTIONS * REPORT AN ERROR

