

## Introducing Proportion

Learning about the principles of design? Continue by noticing proportion in works of art. Proportion is created when the size, amount, or number of all parts of the art relate well to each other. Look at the sculpture of the eagle below. Notice the size of its different body parts. Do certain body parts seem exaggerated to be too large or small?



Unknown artist  
Eagle, 100–300  
The J. Paul Getty Museum, Los Angeles

Education

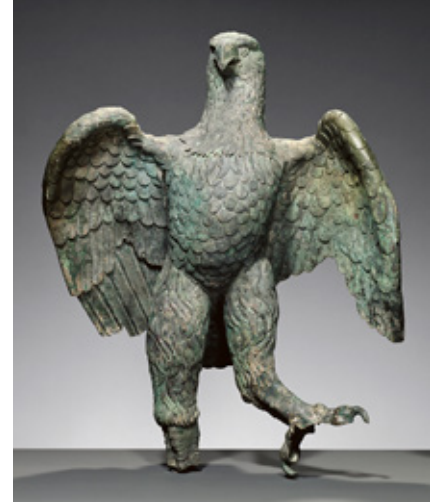
## Introducing Proportion

Build your knowledge of proportion. Choose an object and use the chart below to experiment with proportion.



Unknown artist  
An Eagle, about 1270  
The J. Paul Getty Museum, Los Angeles

**Compare  
and  
Contrast**



Unknown artist  
Eagle, 100–300  
The J. Paul Getty Museum, Los Angeles

Draw an object	
IN PROPORTION	EXAGGERATED PROPORTION