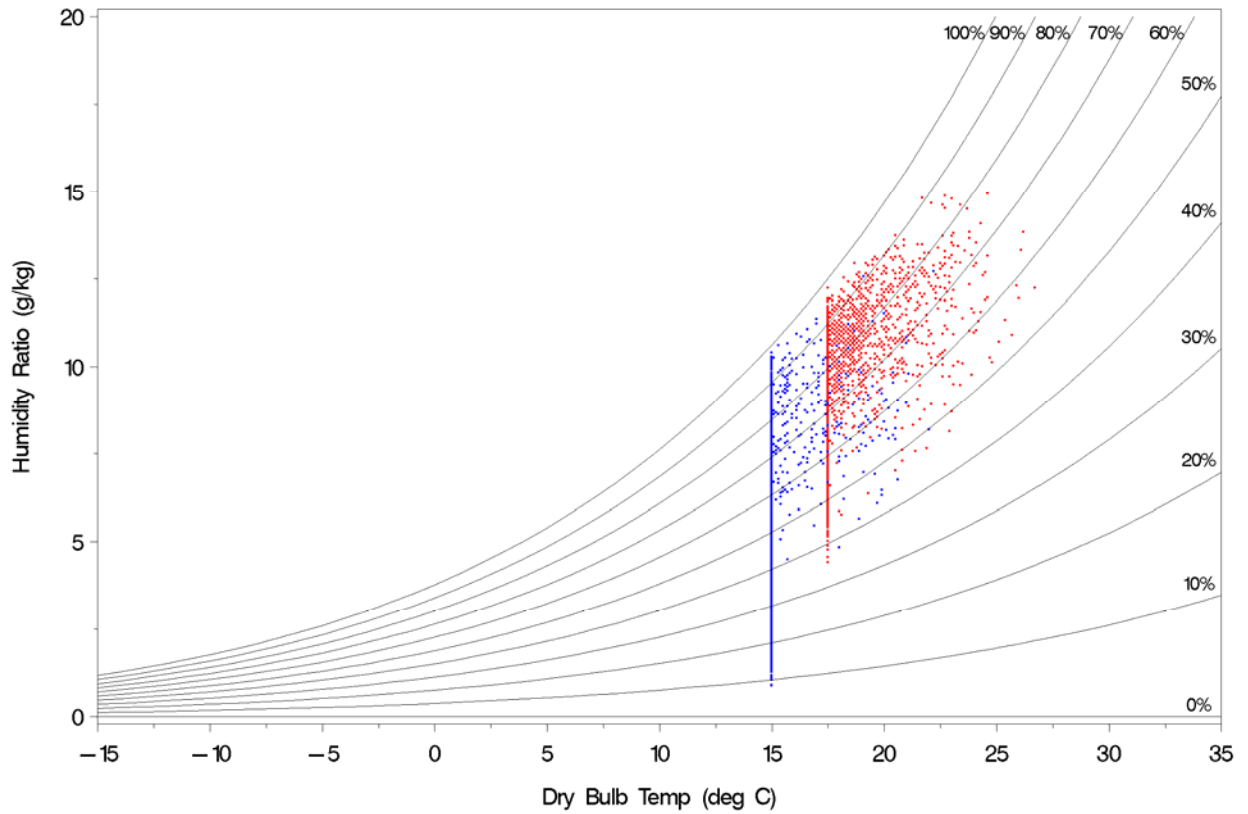
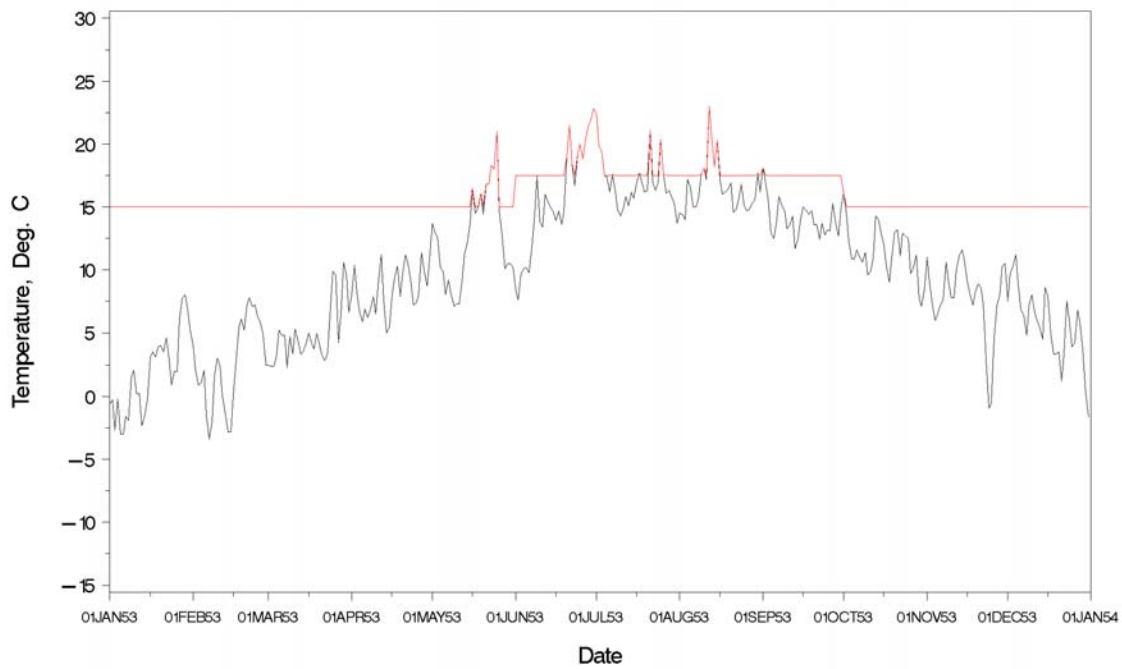


# Historic climate in Sael, Canal Room & Church Central Heating

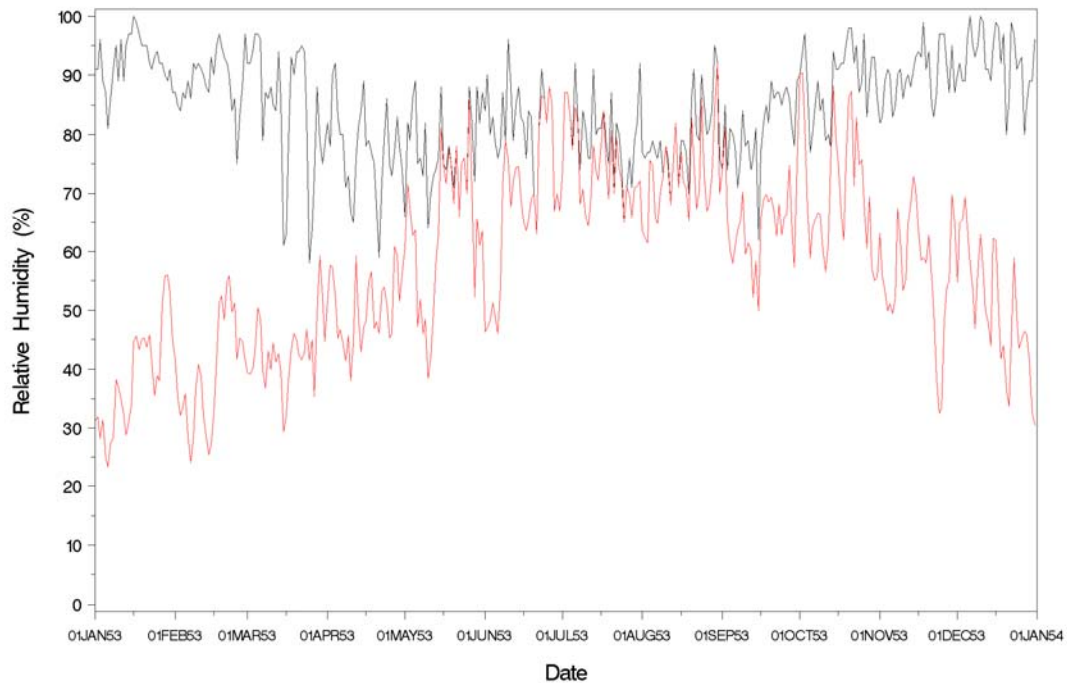


Psychrometric data indoor 1953–1990, with central heating and no humidification. Data points in blue represent October–May and the red data June–September.

## Historic climate in Sael, Canal Room & Church Central Heating



Exterior (black) and modeled indoor (red) daily temperature in the building (including the Church) from January 1953 to December 1953, based on central heating scenario.



Exterior (black) and modeled indoor (red) daily relative humidity in the building (including the Church) from January 1953 to December 1953, based on central heating scenario.