

Renaissance Splendors of the Northern Italian Courts

March 31 to June 21, 2015

The J. Paul Getty Museum at the Getty Center



1. Turone di Maxio

Italian, active 1356 - 1380

[Initial A: The Ascension](#), about 1356-87

Tempera on parchment

Unframed: 27.5 x 17.5 cm (10 13/16 x 6 7/8 in.)

Private Collection, San Francisco

L.2014.121



2. Unknown

[Initial U: Author Portrait of Geremia da Montagnone](#), early fifteenth century

Tempera colors, pen and ink, and gold leaf on parchment bound between wood boards covered with red velvet

Leaf: 36.8 x 26 cm (14 1/2 x 10 1/4 in.)

The J. Paul Getty Museum, Los Angeles

Ms. Ludwig XIV 8, fol. 1 (83.MQ.167.1)



3. Attributed to Anovelo da Imbonate

Italian (Lombard), active about 1400

[A Mother Appealing to Saints Aimo and Vermondo](#), about 1400

from [Legend of the Venerable Men Aimo and Vermondo](#)

Tempera colors, gold leaf, and ink on parchment

Leaf: 25.6 x 18.4 cm (10 1/16 x 7 1/4 in.)

The J. Paul Getty Museum, Los Angeles

Ms. 26, fol. 8v (87.MN.33.8v)

4. Attributed to Anovelo da Imbonate

Italian (Lombard), active about 1400

[A Husband and Wife Presenting Their Sick Son; A Crowd of Lay Worshippers Giving Thanks](#), about 1400

from [Legend of the Venerable Men Aimo and Vermondo](#)

Tempera colors, gold leaf, and ink on parchment

Leaf: 25.6 x 18.4 cm (10 1/16 x 7 1/4 in.)

The J. Paul Getty Museum, Los Angeles

Ms. 26, fol. 9 (87.MN.33.9)



5. Fiore Furlan dei Liberi da Premariacco
 Italian, about 1340/1350 - before 1450
[Examples of Equestrian Combat](#), about 1410
 from [The Flower of Battle](#)
 Tempera colors, gold leaf, silver leaf, and ink on parchment
 Leaf: 27.9 x 20.6 cm (11 x 8 1/8 in.)
 The J. Paul Getty Museum, Los Angeles
 Ms. Ludwig XV 13, fol. 45v (83.MR.183.45v)



6. Fiore Furlan dei Liberi da Premariacco
 Italian, about 1340/1350 - before 1450
[Examples of Equestrian Combat](#), about 1410
 from [The Flower of Battle](#)
 Tempera colors, gold leaf, silver leaf, and ink on parchment
 Leaf: 27.9 x 20.6 cm (11 x 8 1/8 in.)
 The J. Paul Getty Museum, Los Angeles
 Ms. Ludwig XV 13, fol. 46 (83.MR.183.46)

7. Cristoforo Cortese
 Italian, active Venice, Italy 1390 - 1445
 Initial V: The Ascension, about 1410-20
 Tempera and gold on parchment
 Unframed: 56.2 x 40 cm (22 1/8 x 15 3/4 in.)
 Private Collection, San Francisco
 L.2015.45

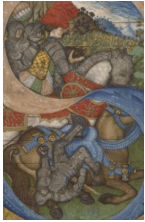


9. Master of the Murano Gradual
 Italian, active about 1430 - 1460
[Saint Jerome Extracting a Thorn from a Lion's Paw](#),
 second quarter of the 15th c.
 Cutting from a gradual
 Tempera and gold leaf on parchment
 Leaf: 21 x 16.5 cm (8 1/4 x 6 1/2 in.)
 The J. Paul Getty Museum, Los Angeles
 Ms. 106, recto (2010.21.recto)

8. Master of the Murano Gradual
 Italian, active about 1430 - 1460
[Initial G: The Birth of the Virgin](#), second quarter of the
 15th c.
 Tempera colors and gold on parchment
 Leaf: 19.4 x 12.6 cm (7 5/8 x 4 15/16 in.)
 Robert McCarthy
 L.2014.69



10. Attributed to Stefano da Verona
 Italian (Lombard), 1374 - after 1438
[Initial A: Pentecost](#), about 1430-35
 Cutting from an antiphonal
 Tempera and gold on parchment
 Leaf: 11.9 x 12.5 cm (4 11/16 x 4 15/16 in.)
 The J. Paul Getty Museum, Los Angeles
 Ms. 95, recto (2005.28.recto)



11. Attributed to Pisanello
 Italian, by 1395 - about 1455
 Attributed to the Master of the Antiphonal Q of San Giorgio Maggiore
 Italian, about 1440 - about 1470
 Initial S: [The Conversion of Saint Paul](#), about 1440-50
 Cutting from a Gradual
 Tempera colors, gold leaf, gold paint, silver leaf, and ink on parchment
 Leaf: 14.1 x 8.9 cm (5 9/16 x 3 1/2 in.)
 The J. Paul Getty Museum, Los Angeles
 Ms. 41, verso (91.MS.5.verso)



12. Master of the Murano Gradual
 Italian, active about 1430 - 1460
 Initial G: [Saint Blaise](#), about 1450-60
 Cutting from a gradual
 Tempera and gold on parchment
 Leaf: 15.7 x 12cm (6 3/16 x 4 3/4 in.)
 The J. Paul Getty Museum, Los Angeles
 Ms. 73, recto (2003.87.recto)



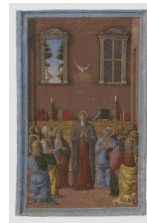
13. Olivetan Master
 Italian, active about 1425 - about 1450
 Initial B: [Four Saints](#), about 1450
 Cutting from a choir book
 Tempera and gold on parchment
 Leaf: 14.3 x 13.5cm (5 5/8 x 5 5/16 in.)
 The J. Paul Getty Museum, Los Angeles
 Ms. 75, recto (2003.89.recto)



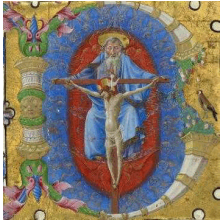
14. Attributed to Franco dei Russi
 Italian, active about 1453 - 1482
 Initial E: [David Lifting Up His Soul to the Lord](#), about 1455-60/63
 Leaf from the Antiphonal of Cardinal Bessarion
 Tempera colors, gold leaf, and ink on parchment
 Leaf: 71.1 x 51.4 cm (28 x 20 1/4 in.)
 The J. Paul Getty Museum, Los Angeles
 Ms. 99, recto (2007.30.recto)



15. Attributed to Andrea Mantegna
 Italian (Paduan), about 1431 - 1506
[Two Standing Male Figures](#), about 1456
 Pen and brown ink, traces of black chalk (recto); pen and brown ink over black chalk (verso)
 20.5 x 13 cm (8 1/16 x 5 1/8 in.)
 The J. Paul Getty Museum, Los Angeles
 92.GA.14



16. Girolamo da Cremona
 Italian, active about 1450 - 1485
[Pentecost](#), about 1460-70
 Miniature from a Devotional or Liturgical Manuscript
 Tempera colors and gold paint on parchment
 Leaf (cutting): 20.1 x 12.9 cm (7 15/16 x 5 1/16 in.)
 The J. Paul Getty Museum, Los Angeles
 Ms. 55, recto (94.MS.13.recto)



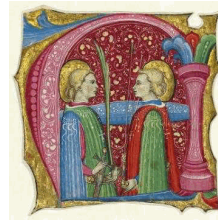
17. Taddeo Crivelli
Italian, died about 1479, active about 1451 - 1479
[Initial B: The Trinity](#), about 1460-70
Cutting from a gradual
Tempera and gold on parchment
Leaf: 16 x 16 cm (6 5/16 x 6 5/16 in.)
The J. Paul Getty Museum, Los Angeles
Ms. 88, recto (2005.2.recto)



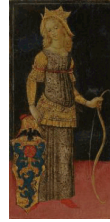
19. Francesco di Giorgio Martini
Italian (Sienese), 1439 - 1501
[Oenone and Paris](#), 1470s
Tempera on panel
Unframed [end panels]: 34 x 17 cm (13 3/8 x 6 11/16 in.)
The J. Paul Getty Museum, Los Angeles
70.PB.45



19. Francesco di Giorgio Martini
Italian (Sienese), 1439 - 1501
[Paris](#), 1470s
Tempera on panel
Unframed: 41.9 x 24.1 cm (16 1/2 x 9 1/2 in.)
The J. Paul Getty Museum, Los Angeles
70.PB.45.3



18. Frate Nebridio
Italian, died before 1503, active second half of the 15th century
[Initial A: Saints Maurice and Theofredus](#), about 1460-80
Cutting from an antiphonal
Tempera and gold leaf on parchment
Leaf: 11.5 x 11.5 cm (4 1/2 x 4 1/2 in.)
The J. Paul Getty Museum, Los Angeles
Ms. 91, recto (2005.21.recto)



19. Francesco di Giorgio Martini
Italian (Sienese), 1439 - 1501
[Oenone](#), 1470s
Tempera on panel
Unframed: 41.9 x 24.1 cm (16 1/2 x 9 1/2 in.)
The J. Paul Getty Museum, Los Angeles
70.PB.45.1

20. Unknown maker, Italian
[Historiated Initials with Joel, Amos, and Obadiah](#), about 1465-80
Tempera colors and gold on parchment
Leaf: 27.3 x 20.3 cm (10 3/4 x 8 in.)
Robert McCarthy
L.2014.74



21. Belbello da Pavia
 Italian (Lombard), died after 1473, active about 1430 - 1473
Initial A: Young Christ Blessing, about 1467-70
 Leaf from Antiphonal P of San Giorgio Maggiore
 Tempera and gold on parchment
 Leaf: 56.2 x 40.7 cm (22 1/8 x 16 in.)
 The J. Paul Getty Museum, Los Angeles
 Ms. 96, verso (2005.29.verso)



22. Taddeo Crivelli
 Italian, died about 1479, active about 1451 - 1479
The Annunciation, about 1469
 from **Gualenghi-d'Este Hours**
 Tempera colors, gold paint, gold leaf, and ink on parchment
 Leaf: 10.8 x 7.9 cm (4 1/4 x 3 1/8 in.)
 The J. Paul Getty Museum, Los Angeles
 Ms. Ludwig IX 13, fol. 3v (83.ML.109.3v)



23. Guglielmo Giraldi
 Italian, active 1445 - 1489
Initial D: The Virgin and Child, about 1469
 from **Gualenghi-d'Este Hours**
 Tempera colors, gold paint, gold leaf, and ink on parchment
 Leaf: 10.8 x 7.9 cm (4 1/4 x 3 1/8 in.)
 The J. Paul Getty Museum, Los Angeles
 Ms. Ludwig IX 13, fol. 4 (83.ML.109.4)



24. Attributed to Cosmè Tura
 Italian (Ferrarese), about 1430 - 1495
Initial D: Saint John the Baptist, about 1470-80
 Cutting from a Franciscan gradual
 Tempera and gold on parchment
 Leaf: 35 x 29.8 cm (13 3/4 x 11 3/4 in.)
 The J. Paul Getty Museum, Los Angeles
 Ms. 94, verso (2005.27.verso)



25. Ercole de'Roberti
 Italian, about 1450 - 1496
Saint Jerome in the Wilderness, about 1470
 Tempera on panel
 Unframed: 34 x 21.9 cm (13 3/8 x 8 5/8 in.)
 The J. Paul Getty Museum, Los Angeles
 96.PB.14

26. Francesco di Giorgio Martini
 Italian, 1439 - 1502
War Machine and Allegory of Death, 1475-1480
 Pen and ink on paper
 Closed: 28.5 x 21.7 x 1.8 cm (11 1/4 x 8 9/16 x 11/16 in.)
 The Getty Research Institute
 870439



27. Giovanni Antonio Decio
Italian, active 1480 - 1490s
[Initial D: The Calling of Saints Peter and Andrew](#), 1480
Tempera on parchment
Unframed: 17.5 x 23.5 cm (6 7/8 x 9 1/4 in.)
Private Collection, San Francisco
L.2014.122

28. Master B.F.
Italian, active about 1495 - 1510
[Initial E: Saint John the Evangelist](#), early sixteenth century
Cutting from an antiphonal
Tempera and gold leaf on parchment
Leaf: 16.5 x 16.5 cm (6 1/2 x 6 1/2 in.)
The J. Paul Getty Museum, Los Angeles
Ms. 104, recto (2009.51.recto)

