

Temptation and Salvation: The Psalms of King David

June 9 to August 16, 2009

The J. Paul Getty Museum at the Getty Center

The Psalms and their illustrations played a central role in medieval Christianity from about the year 500 to the 1500s. Originally composed in Hebrew and incorporated into both the Hebrew and then the Christian Bibles, the 150 "songs of praise" (psalmi in Latin) include laments as well as prayers of thanks and exaltation. King David was commonly believed to be the author of the Psalms, so their words were often linked in the medieval imagination to the story of David's life and his spiritual journey. Psalm illustrations frequently depict stories from the life of David--the shepherd who became a divinely chosen king and the sinner who embraced penitence to find redemption. David became an example for medieval Christians, and the words and accompanying images of the Psalms inspired readers to follow in his footsteps toward salvation.

-Mary Flannery
Department of Manuscripts



1. Master of the Ingeborg Psalter
French, active about 1195 - about 1210
Initial D: David Pointing to His Mouth, after 1205
from [Psalter](#)
Tempera colors and gold leaf on parchment
Leaf: 31 x 21.9 cm (12 3/16 x 8 5/8 in.)
The J. Paul Getty Museum, Los Angeles
Ms. 66, fol. 41v (99.MK.48.41v)



2. German
The Tree of Jesse, about 1240 - 1250
from [Psalter](#)
Tempera colors, gold leaf, and silver leaf on parchment
Leaf: 22.7 x 15.7 cm (8 15/16 x 6 3/16 in.)
The J. Paul Getty Museum, Los Angeles
Ms. Ludwig VIII 2, fol. 7v (83.MK.93.7v)



3. Flemish
Initial D: The Harrowing of Hell, Mid-1200s
from [Psalter](#)
Tempera colors, gold leaf, and ink on parchment
Leaf: 23.5 x 16.5 cm (9 1/4 x 6 1/2 in.)
The J. Paul Getty Museum, Los Angeles
Ms. 14, fol. 110 (85.MK.239.110)



4. Bute Master
Franco-Flemish, active about 1260 - 1290
Initial D: The Anointing of David, about 1270 - 1280
from [Bute Psalter](#)
Tempera colors, gold, and iron gall ink on parchment
Leaf: 17 x 11.9 cm (6 11/16 x 4 11/16 in.)
The J. Paul Getty Museum, Los Angeles
Ms. 46, fol. 32v (92.MK.92.32v)



5. French
 Initial D: Christ before Caiaphas; Initial D: The Virgin Mary with Apostles, Beginning of 14th century
 from [Ruskin Hours](#)
 Tempera colors, gold leaf, and ink on parchment
 Leaf: 26.4 x 18.3 cm (10 3/8 x 7 3/16 in.)
 The J. Paul Getty Museum, Los Angeles
 Ms. Ludwig IX 3, fol. 29 (83.ML.99.29)



6. French
 Initial C: Clerics Singing from a Choir Book, about 1320 - 1325
 from Breviary
 Tempera colors, gold leaf, and ink on parchment
 Leaf (trimmed): 16.7 x 11.1 cm (6 9/16 x 4 3/8 in.)
 The J. Paul Getty Museum, Los Angeles
 Ms. Ludwig IX 2, fol. 58v (83.ML.98.58v)

7. Circle of Jean le Noir
 active Paris, France about 1331 - 1375
 Initial S: David Praying in the Water, about 1335 - 1350
 Tempera colors and gold on parchment
 Leaf: 18.6 x 13 cm (7 5/16 x 5 1/8 in.)
 James E. and Elizabeth J. Ferrell
 (L.2004.55.34)

8. French
 Initial B: David Playing the Harp, about 1390
 from Psalter
 Tempera colors, gold leaf, and ink on parchment
 Leaf: 22.4 x 16.8 cm (8 13/16 x 6 5/8 in.)
 The J. Paul Getty Museum, Los Angeles
 Ms. Ludwig VIII 5, fol. 13 (83.MK.96.13)



9. German
 David and Bathsheba, about 1400 - 1410 with addition in 1487
 from [World Chronicle](#)
 Tempera colors, gold, silver paint, and ink on parchment
 Leaf: 33.5 x 23.5 cm (13 3/16 x 9 1/4 in.)
 The J. Paul Getty Museum, Los Angeles
 Ms. 33, fol. 191v (88.MP.70.191v)



10. German
 Uriah at David's Table, about 1400 - 1410 with addition in 1487
 from [World Chronicle](#)
 Tempera colors, gold, silver paint, and ink on parchment
 Leaf: 33.5 x 23.5 cm (13 3/16 x 9 1/4 in.)
 The J. Paul Getty Museum, Los Angeles
 Ms. 33, fol. 192 (88.MP.70.192)



11. British
David Bringing the Ark of the Covenant to Jerusalem, 15th century
from [Life of Christ with added devotional texts and illuminations](#)
Tempera colors and gold leaf on parchment
Leaf: 11.9 x 17 cm (4 11/16 x 6 11/16 in.)
The J. Paul Getty Museum, Los Angeles
Ms. 101, fol. 14 (2008.3.14)



12. Italian
[Initial D: A Monk with His Finger to His Lips](#), about 1420
Leaf from a Noted Breviary (Fol. 73)
Tempera colors, gold leaf, and ink on parchment
Leaf (approx.): 46.5 x 34.6 cm (18 5/16 x 13 5/8 in.)
The J. Paul Getty Museum, Los Angeles
Ms. 24, leaf 1 (86.ML.674.1.recto)



13. Workshop of the Bedford Master
French, active first half of 15th century
A Burial, about 1440 - 1450
from [Book of Hours](#)
Tempera colors, gold leaf, gold paint, and ink on parchment
Leaf: 23.5 x 16.4 cm (9 1/4 x 6 7/16 in.)
The J. Paul Getty Museum, Los Angeles
Ms. Ludwig IX 6, fol. 133 (83.ML.102.133)



14. Circle of Stefan Lochner
German, died 1451
[Initial A: The Coronation of David](#), about 1450
from [Bible](#)
Gold leaf, tempera, and black ink on parchment
Leaf: 36.7 x 26 cm (14 7/16 x 10 1/4 in.)
The J. Paul Getty Museum, Los Angeles
Ms. Ludwig I 13, fol. 126 (83.MA.62.126)



15. Attributed to Franco dei Russi
Italian, active about 1453 - 1482
[Initial E: David Lifting up His Soul to God](#), about 1455 - 1460/1463
Leaf from the Antiphonal of Cardinal Bessarion
Tempera colors, gold leaf, and ink on parchment
Image: 20.3 x 19.1 cm (8 x 7 1/2 in.)
The J. Paul Getty Museum, Los Angeles
Ms. 99, recto (2007.30.recto)



16. Willem Vrelant or workshop
Flemish, died 1481, active 1454 - 1481
[The Man of Sorrows](#), Early 1460s
from [Arenberg Hours](#)
Tempera colors, gold leaf, and ink on parchment
Leaf: 25.6 x 17.3 cm (10 1/16 x 6 13/16 in.)
The J. Paul Getty Museum, Los Angeles
Ms. Ludwig IX 8, fol. 234 (83.ML.104.234)



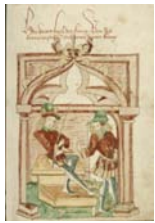
17. Flemish

David Praying That the Israelites Be Spared from a Plague, after 1460
from Book of Hours
Tempera colors, gold leaf, and ink on parchment
Leaf: 17.1 x 12.2 cm (6 3/4 x 4 13/16 in.)
The J. Paul Getty Museum, Los Angeles
Ms. Ludwig IX 9, fol. 74v (83.ML.105.74v)



18. Flemish

Initial H: David Playing the Harp, after 1460
from Book of Hours
Tempera colors, gold leaf, and ink on parchment
Leaf: 17.1 x 12.2 cm (6 3/4 x 4 13/16 in.)
The J. Paul Getty Museum, Los Angeles
Ms. Ludwig IX 9, fol. 75 (83.ML.105.75)



19. Alsatian

David Enthroned and Saul Departing, 1469
from [Barlaam and Josaphat](#)
Ink, colored washes, and tempera colors on paper
Leaf: 28.6 x 20.3 cm (11 1/4 x 8 in.)
The J. Paul Getty Museum, Los Angeles
Ms. Ludwig XV 9, fol. 59 (83.MR.179.59)



20. Master of the Dresden Prayer Book or workshop

Flemish, active about 1480 - 1515
[David and Goliath](#), about 1480 - 1485 ?
from [Crohin-La Fontaine Hours](#)
Tempera colors and gold on parchment
Leaf: 20.5 x 14.8 cm (8 1/16 x 5 13/16 in.)
The J. Paul Getty Museum, Los Angeles
Ms. 23, fol. 121v (86.ML.606.121v)



21. Flemish

[Decorated Initial D](#), about 1480 - 1485 ?
from [Crohin-La Fontaine Hours](#)
Tempera colors and gold on parchment
Leaf: 20.5 x 14.8 cm (8 1/16 x 5 13/16 in.)
The J. Paul Getty Museum, Los Angeles
Ms. 23, fol. 122 (86.ML.606.122)



22. French

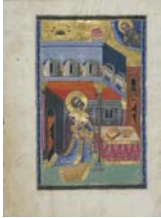
David before Nathan, about 1500
Leaf from a Book of Hours
Tempera colors and gold leaf on parchment
Leaf: 17.6 x 12.8 cm (6 15/16 x 5 1/16 in.)
Gift of Collection Heinz Kisters. The J. Paul Getty Museum, Los Angeles
Ms. 58, recto (94.MS.43.recto)



23. Workshop of Master of the First Prayer Book of Maximilian
Flemish, active about 1475 - 1515
[The Last Judgment](#), about 1510 - 1520
from [Spinola Hours](#)
Tempera colors, gold, and ink on parchment
Leaf: 23.2 x 16.7 cm (9 1/8 x 6 9/16 in.)
The J. Paul Getty Museum, Los Angeles
Ms. Ludwig IX 18, fol. 165v (83.ML.114.165v)



24. Master of the Lübeck Bible
[David in Prayer](#), about 1510 - 1520
from [Spinola Hours](#)
Tempera colors, gold, and ink on parchment
Leaf: 23.2 x 16.7 cm (9 1/8 x 6 9/16 in.)
The J. Paul Getty Museum, Los Angeles
Ms. Ludwig IX 18, fol. 166 (83.ML.114.166)



25. Armenian
[David in Prayer](#), 1637 - 1638
from Bible
Tempera colors, gold paint, and gold leaf on parchment
Leaf: 25.2 x 18.3 cm (9 15/16 x 7 3/16 in.)
The J. Paul Getty Museum, Los Angeles
Ms. Ludwig I 14, fol. 320v (83.MA.63.320v)



26. Armenian
Decorated Incipit Page, 1637 - 1638
from Bible
Tempera colors, gold paint, and gold leaf on parchment
Leaf: 25.2 x 18.3 cm (9 15/16 x 7 3/16 in.)
The J. Paul Getty Museum, Los Angeles
Ms. Ludwig I 14, fol. 321 (83.MA.63.321)

