

# An Enduring Icon: Notre-Dame Cathedral

July 23 to October 20, 2019

The J. Paul Getty Museum at the Getty Center



1. Jean-Baptiste Raguenet  
French, 1715 - 1793  
[A View of Paris with the Île de la Cité](#), 1763  
Oil on canvas  
Unframed: 46 × 84.5 cm (18 1/8 × 33 1/4 in.)  
The J. Paul Getty Museum, Los Angeles  
71.PA.25



2. Paul Collemant  
French, active 1910s - 1930s  
[Bridge on the Seine](#), June 1, 1924  
Platinum print  
Image: 22.4 × 26.3 cm (8 13/16 × 10 3/8 in.)  
The J. Paul Getty Museum, Los Angeles  
84.XM.213.1



3. Paul Collemant  
French, active 1910s - 1930s  
[The New Bridge of Toumelles](#), 1928  
Platinum print  
Image: 21.4 × 23.4 cm (8 7/16 × 9 3/16 in.)  
The J. Paul Getty Museum, Los Angeles  
84.XM.213.7



4. Paul Collemant  
French, active 1910s - 1930s  
[Notre-Dame, The Spire](#), 1937  
Platinum print  
Image: 23.5 × 12.1 cm (9 1/4 × 4 3/4 in.)  
The J. Paul Getty Museum, Los Angeles  
84.XM.213.9



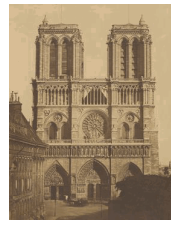
5. Paul Collemant  
French, active 1910s - 1930s  
*At the Port of Louviers*, 1918  
Platinum print  
Image: 21.2 × 26 cm (8 3/8 × 10 1/4 in.)  
The J. Paul Getty Museum, Los Angeles  
84.XM.213.11



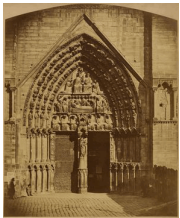
6. Paul Collemant  
French, active 1910s - 1930s  
*Bridge on the Seine toward Notre-Dame*, June 1, 1924  
Platinum print  
Image: 22.4 × 26.7 cm (8 13/16 × 10 1/2 in.)  
The J. Paul Getty Museum, Los Angeles  
84.XM.213.23



7. Charles Soulier  
French, 1840 - 1875  
*Apse of Notre-Dame of Paris, Viewed from the Bank of La Tournelle*, 1860-70  
Albumen silver print  
Image: 25 × 19.2 cm (9 13/16 × 7 9/16 in.)  
The J. Paul Getty Museum, Los Angeles  
84.XP.218.1



8. Édouard Baldus  
French, born Germany, 1813 - 1889  
*Notre-Dame de Paris*, 1850-59  
Albumen silver print  
Image: 44.5 × 34.4 cm (17 1/2 × 13 9/16 in.)  
The J. Paul Getty Museum, Los Angeles  
84.XM.348.10



9. Bisson Frères  
French, active 1840 - 1864  
*Portal of the Virgin*, About 1855  
Albumen silver print  
Image: 65.2 × 53 cm (25 11/16 × 20 7/8 in.)  
The J. Paul Getty Museum, Los Angeles  
84.XM.359.14

10. After Eugène Viollet-le-Duc  
French, 1814–1879  
*Ahiud (left), Abdon (right)*, About 1853-57  
Chromolithograph  
Image: 34.3 × 26 cm (13 1/2 × 10 1/4 in.)  
The J. Paul Getty Museum, Los Angeles  
84.XM.388.pl30

11. After Eugène Viollet-le-Duc  
French, 1814–1879  
*Antichrist beheads Elias and Enoch*, About 1853-57  
Chromolithograph  
Image: 33 × 23.8 cm (13 × 9 3/8 in.)  
The J. Paul Getty Museum, Los Angeles  
84.XM.388.pl32



13. Unknown maker, French  
*Gargoyle, Notre Dame*, 1880s  
Albumen silver prints  
Image: 20.8 × 14.1 cm (8 3/16 × 5 9/16 in.)  
The J. Paul Getty Museum, Los Angeles  
84.XP.492.11



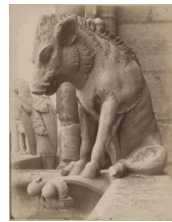
15. Unknown maker, French  
*Gargoyle, Notre Dame*, 1880s  
Albumen silver prints  
Image: 26.4 × 20.6 cm (10 3/8 × 8 1/8 in.)  
The J. Paul Getty Museum, Los Angeles  
84.XP.492.14



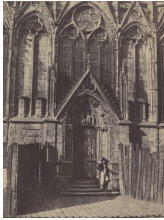
12. Nadar [Gaspard Félix Tournachon]  
French, 1820 - 1910  
*Victor Hugo (French, 1802-1885)*, 1884  
Woodburytype  
Image: 36.2 × 25.8 cm (14 1/4 × 10 3/16 in.)  
The J. Paul Getty Museum, Los Angeles  
84.XM.436.461



14. Unknown maker, French  
*Gargoyle, Notre Dame*, 1880s  
Albumen silver prints  
Image: 26 × 20.1 cm (10 1/4 × 7 15/16 in.)  
The J. Paul Getty Museum, Los Angeles  
84.XP.492.13



16. Unknown maker, French  
*Gargoyle, Notre Dame*, 1880s  
Albumen silver prints  
Image: 26.4 × 20.6 cm (10 3/8 × 8 1/8 in.)  
The J. Paul Getty Museum, Los Angeles  
84.XP.492.15



17. Charles Marville  
French, 1813 - 1879  
Printed by Louis Désiré Blanquart-Evrard  
French, 1802 - 1872  
[The Red Door](#), 1852  
Salted paper print  
Image: 20.9 × 15.5 cm (8 1/4 × 6 1/8 in.)  
The J. Paul Getty Museum, Los Angeles  
84.XM.505.12



18. Charles Le Brun  
French, 1619 - 1690  
[The Martyrdom of Saint Andrew](#), 1646-47  
Oil on canvas  
Unframed: 98.4 × 80 cm (38 3/4 × 31 1/2 in.)  
The J. Paul Getty Museum, Los Angeles  
84.PA.669



19. Unknown maker, French  
[Notre-Dame \(facade\)](#), 1850s  
Albumen silver print  
The J. Paul Getty Museum, Los Angeles  
84.XC.873.1854



20. Adolphe Braun  
French, 1812 - 1877  
[Notre-Dame \(facade\)](#), 1865-75  
Albumen silver print  
The J. Paul Getty Museum, Los Angeles  
84.XC.873.4200



21. Attributed to Adolphe Block  
French, 1829 - about 1900  
[Notre-Dame \(apse\)](#), 1870s  
Albumen silver print  
The J. Paul Getty Museum, Los Angeles, Gift of Weston  
J. and Mary M. Naef  
84.XC.979.5403

22. After a Drawing by Eugène Viollet-le-Duc (1857)  
French, 1814 - 1879  
*The Spire*, 1884  
Chromolithograph  
Page: 60 × 42 cm (23 5/8 × 16 9/16 in.)  
The Getty Research Institute  
85-B2517.1

23. After a Drawing by Eugène Viollet-le-Duc (1859)  
French, 1814 - 1879  
*Reliquary of the Crown of Thorns, Upper Part*, 1884  
Chromolithograph  
Page: 42 × 30 cm (16 9/16 × 11 13/16 in.)  
The Getty Research Institute  
85-B2517.2



24. After a Drawing by Eugène Viollet-le-Duc (1859)  
French, 1814 - 1879  
*Reliquary of the Crown of Thorns, Lower Part*, 1884  
Chromolithograph  
Page: 31 × 42 cm (12 3/16 × 16 9/16 in.)  
The Getty Research Institute  
85-B2517.3

25. André Kertész  
American, born Hungary, 1894 - 1985  
*Notre-Dame*, 1925-28  
Gelatin silver print  
Image: 5.4 × 3.8 cm (2 1/8 × 1 1/2 in.)  
The J. Paul Getty Museum, Los Angeles  
© *Estate of André Kertész*  
86.XM.706.18



26. Jean Marot  
French, 1619? - 1679  
*The Te Deum Sung in Notre-Dame*  
In Jean Tronçon, *L'entrée triomphante de leurs maiestez Louis XIV...et son espouse...dans la ville de Paris*, 1662  
Etching  
Closed: 45.1 × 30.6 × 2.9 cm (17 3/4 × 12 1/16 × 1 1/8 in.)  
The Getty Research Institute  
87-B2431

27. Eugène Viollet-le-Duc  
French, 1814 - 1879  
*Charpente* (Framing)  
In *Dictionnaire raisonné de l'architecture française du XIe au XVIe siècle*, 1858  
Plate (page 12): 18 × 10.5 cm (7 1/16 × 4 1/8 in.)  
The Getty Research Institute  
90-B30750.v3

28. Eugène Viollet-le-Duc  
French, 1814 - 1879  
*Gargouille* (Gargoyle)  
In *Dictionnaire raisonné de l'architecture française du XIe au XVIe siècle*, 1858  
Closed: 28 × 19 × 5 cm (11 × 7 1/2 × 1 15/16 in.)  
The Getty Research Institute  
90-B30750.v6

29. Victor Hugo  
French, 1802-1855  
*Notre-Dame de Paris*, 1930  
Woodcuts by Frans Masereel  
Flemish, 1889-1972  
Image: 16 × 12 cm (6 5/16 × 4 3/4 in.)  
The Getty Research Institute  
92-B12876.v1

30. Victor Hugo  
French, 1802 - 1855  
*Notre-Dame de Paris*, 1930  
Woodcuts by Frans Masereel  
Flemish, 1889-1972  
Image: 16 × 12 cm (6 5/16 × 4 3/4 in.)  
The Getty Research Institute  
92-B12876.v2



31. Étienne Picart  
French, 1632 - 1721  
After Charles Le Brun  
French, 1619 - 1690  
*The Martyrdom of St. Andrew*, after 1647  
Etching and engraving  
Sheet: 53.5 × 40.4 cm (21 1/16 × 15 7/8 in.)  
The Getty Research Institute  
2003.PR.20.1



32. Jean-Pierre-Marie Jazet  
French, 1788 - 1871  
After Jacques-Louis David  
French, 1748-1825  
*The Coronation of Napoleon*, about 1823-1825  
Aquatint  
Sheet: 77 × 107 cm (30 5/16 × 42 1/8 in.)  
The Getty Research Institute  
2017.PR.16

33. Gabriel Pérelle  
French, 1602 - 1677  
*The Tip of the Palace Island behind the Church of Notre-Dame*, 1670s  
Etching and engraving  
Closed: 29 × 38.5 × 1 cm (11 7/16 × 15 3/16 × 3/8 in.)  
The Getty Research Institute  
25413368-B

July 19, 2019

Additional information about some of these works of art can be found by searching [getty.edu](http://www.getty.edu) at <http://www.getty.edu/art/collection/>

34. Eugène Viollet-le-Duc  
French, 1814 - 1879  
*Letter of Recommendation for William Eden Nesfield*,  
July 3, 1857  
Page: 21 × 13 cm (8 1/4 × 5 1/8 in.)  
The Getty Research Institute  
850892.1

35. Charles Méryon  
French, 1821 - 1868  
*The Little Bridge*, 1850  
Etching  
Plate: 26.2 × 19.5 cm (10 5/16 × 7 11/16 in.)  
Lent Anonymously  
L.2019.139.1

36. Charles Méryon  
French, 1821 - 1868  
*Le Stryge (The Vampire)*, 1853  
Etching  
Plate: 16.9 × 13 cm (6 5/8 × 5 1/8 in.)  
Lent Anonymously  
L.2019.139.2

37. Charles Méryon  
French, 1821 - 1868  
*The Gallery of Notre-Dame*, 1853  
Etching  
Sheet: 35.6 × 23.2 cm (14 × 9 1/8 in.)  
Lent Anonymously  
L.2019.139.3

38. Charles Méryon  
French, 1821 - 1868  
*The Apse of Notre-Dame*, 1854  
Etching with engraving and drypoint  
Plate: 26 × 43 cm (10 1/4 × 16 15/16 in.)  
Lent Anonymously  
L.2019.139.4