

In Focus: Still Life

September 7, 2010 to January 23, 2011

The J. Paul Getty Museum at the Getty Center



1. Baron Armand-Pierre Séguier
French, 1803 - 1876
possibly in association with Louis-Jacques-Mandé
Daguerre
French, 1787 - 1851
[Still Life With Plaster Casts](#), 1839 - 1842
Daguerreotype
Whole plate
The J. Paul Getty Museum, Los Angeles
2002.41



2. Thomas Richard Williams
English, 1825 - 1871
[The Sands of Time](#), 1850 - 1852
Stereograph, daguerreotype
Two 1/6 plates
The J. Paul Getty Museum, Los Angeles
84.XT.266.9



3. Louis-Rémy Robert
French, 1811 - 1882
Still Life with Statuette and Vases, negative 1855; print
1870s
Carbon print
Image: 32.4 x 26.2 cm (12 3/4 x 10 5/16 in.)
The J. Paul Getty Museum, Los Angeles
84.XP.218.10



4. Roger Fenton
English, 1819 - 1869
Still Life with Game and Gun, about 1859
Albumen silver print
Image: 19.8 x 17.6 cm (7 13/16 x 6 15/16 in.)
The J. Paul Getty Museum, Los Angeles
84.XM.915.6



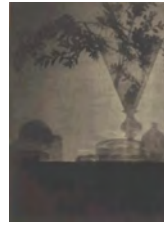
5. Charles Aubry
French, 1811 - 1877
[An Arrangement of Tobacco Leaves and Grass](#), about 1864
Albumen silver print
Image: 47 x 37.3 cm (18 1/2 x 14 11/16 in.)
The J. Paul Getty Museum, Los Angeles
84.XP.394



6. Henry Bailey
English, active late 1860s
[Still Life with Carp and Pike](#), 1869
Albumen silver print
Image: 18.1 x 23.5 cm (7 1/8 x 9 1/4 in.)
The J. Paul Getty Museum, Los Angeles
84.XA.700.3.88



7. Frederick H. Hollyer
English, 1837 - 1933
[Lilies](#), about 1885
Platinum print
Image: 33.7 x 19.1 cm (13 1/4 x 7 1/2 in.)
The J. Paul Getty Museum, Los Angeles
84.XP.461.2



8. Baron Adolf De Meyer
American, born France, 1868 - 1946
[Glass and Shadows](#), 1905
Photogravure print
Image: 22.2 x 16.7 cm (8 3/4 x 6 9/16 in.)
The J. Paul Getty Museum, Los Angeles
84.XP.463.22



9. Heinrich Kühn
Austrian, born Germany, 1866 - 1944
[Tea Still-life, Version III](#), 1907
Platinum print
Image: 27.5 x 37.8 cm (10 13/16 x 14 7/8 in.)
The J. Paul Getty Museum, Los Angeles
84.XM.829.3



10. Paul Strand
American, 1890 - 1976
[Black Bottle](#), negative about 1919; print 1923 - 1939
Gelatin silver, on Cykora paper print
Image (trimmed to mount): 32.7 x 24.8 cm (12 7/8 x 9 3/4 in.)
The J. Paul Getty Museum, Los Angeles
© Aperture Foundation
86.XM.686.5.1



11. Albert Renger-Patzsch
German, 1897 - 1966
Flatirons for Shoe Manufacture, about 1926
Gelatin silver print
Sheet: 22.9 x 16.8 cm (9 x 6 5/8 in.)
The J. Paul Getty Museum, Los Angeles
© Albert Renger-Patzsch Archiv / Ann u. Jürgen Wilde,
Zülpich / Artists Rights Society (ARS), New York
84.XM.138.1



12. Edward Weston
American, 1886 - 1958
[Bananas and Orange](#), April 1927
Gelatin silver print
Image: 18.9 x 23.7 cm (7 7/16 x 9 5/16 in.)
The J. Paul Getty Museum, Los Angeles
© 1981 Arizona Board of Regents, Center for Creative
Photography
84.XM.860.4



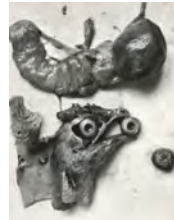
13. André Kertész
American, born Hungary, 1894 - 1985
[Bowl with Sugar Cubes](#), 1928
Gelatin silver print
Image: 16.7 x 16.4 cm (6 9/16 x 6 1/2 in.)
The J. Paul Getty Museum, Los Angeles
© Estate of André Kertész
84.XM.193.46



14. Hans Bellmer
German, 1902 - 1975
The Doll, 1935
Gelatin silver print
Image: 14.6 x 14 cm (5 3/4 x 5 1/2 in.)
The J. Paul Getty Museum, Los Angeles
© Artists Rights Society (ARS), New York / ADAGP, Paris
84.XM.128.24



15. Paul Outerbridge
American, 1896 - 1958
[Tools with Blueprint](#), 1939
Carbro print
Image: 41.5 x 31 cm (16 5/16 x 12 3/16 in.)
Gift of Susan and G. Ray Hawkins. The J. Paul Getty
Museum, Los Angeles
Paul Outerbridge, Jr. © 2008 G. Ray Hawkins Gallery,
Beverly Hills, California
97.XM.57



16. Frederick Sommer
American, born Italy, 1905 - 1999
The Anatomy of a Chicken, 1939
Gelatin silver print
Image: 24.1 x 19.1 cm (9 1/2 x 7 1/2 in.)
The J. Paul Getty Museum, Los Angeles
© Frederick and Frances Sommer Foundation
94.XM.37.96



17. Man Ray (Emmanuel Radnitsky)
American, 1890 - 1976
[Dead Leaf](#), 1942
Gelatin silver print
Image: 24.1 x 19.8 cm (9 1/2 x 7 13/16 in.)
The J. Paul Getty Museum, Los Angeles
© *Man Ray Trust ARS-ADAGP*
84.XM.1000.55



18. Walker Evans
American, 1903 - 1975
Baby Terrier Crate Opener, 1955
Gelatin silver print
Image: 24.4 x 19.8 cm (9 5/8 x 7 13/16 in.)
The J. Paul Getty Museum, Los Angeles
84.XM.488.33

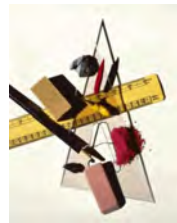


19. Josef Sudek
Czech, 1896 - 1976
Late Roses, 1959
Gelatin silver print
Image: 29.7 x 23.5 cm (11 11/16 x 9 1/4 in.)
The J. Paul Getty Museum, Los Angeles
© *Gabina and Isabela Fárová*
84.XM.149.13

20. Marie Cosindas
American, born 1925
Asparagus Still Life I, 1967
Polaroid print
Image: 12.7 x 10.2 cm (5 x 4 in.)
Marie Cosindas
L.2010.39.13



21. Sigmar Polke
German, 1941 - 2010
Düsseldorf, 1969
Gelatin silver print
Image: 17 x 22.7 cm (6 11/16 x 8 15/16 in.)
The J. Paul Getty Museum, Los Angeles
© *Estate of Sigmar Polke*
84.XM.137.25



22. Irving Penn
American, 1917 - 2009
Still Life with Triangle and Red Eraser, 1985
Cibachrome print
Image: 57.8 x 46 cm (22 3/4 x 18 1/8 in.)
Purchased with funds provided by the Photographs
Council of the J. Paul Getty Museum, Los Angeles
© *1985 Irving Penn*
2009.36



23. Jo Ann Callis
American, born 1940
Untitled (Strawberry Pie), #2, 1993
Dye destruction (Cibachrome) print
Image: 27.9 x 35.5 cm (11 x 14 in.)
The J. Paul Getty Museum, Los Angeles
© Jo Ann Callis
2004.86.17



24. Marian Drew
Australian, born 1960
[Lorikeet with Green Cloth](#), 2006
Digital pigment print mounted on 4 ply
Image: 71.8 x 89.5 cm (28 1/4 x 35 1/4 in.)
Purchased with funds provided by the Photographs
Council of the J. Paul Getty Museum, Los Angeles
© Marian Drew
2009.44



25. Ori Gersht
Israeli, born 1967
[Blow Up: Untitled 15](#), 2007
Digital chromogenic prints mounted on aluminum
Framed: 100 x 83.2 cm (39 3/8 x 32 3/4 in.)
Purchased with funds provided by the Photographs
Council of the J. Paul Getty Museum, Los Angeles
© Ori Gersht
2009.46



26. Sharon Core
American, born 1965
[Early American - Still Life with Steak](#), 2008
Chromogenic print
Image: 43.7 x 59.5 cm (17 3/16 x 23 7/16 in.)
Purchased with funds provided by the Photographs
Council of the J. Paul Getty Museum, Los Angeles
© Sharon Core
2009.78