

# In Focus: Electric!

April 5 to August 28, 2016

The J. Paul Getty Museum at the Getty Center



1. Nadar [Gaspard Félix Tournachon]  
French, 1820 - 1910  
[The Catacombs of Paris](#), 1861  
Albumen silver print  
Image: 22 × 18.3 cm (8 5/8 × 7 3/16 in.)  
The J. Paul Getty Museum, Los Angeles  
84.XM.436.468



2. Alfred Stieglitz  
American, 1864 - 1946  
[The Glow of Night - New York](#), 1897  
Photogravure  
Image: 12.1 × 23.2 cm (4 3/4 × 9 1/8 in.)  
The J. Paul Getty Museum, Los Angeles  
84.XM.1038.2



3. Paul B. Haviland  
American, 1880 - 1950  
[Theatre at Night, New York City](#), 1909  
Gelatin silver print  
Image: 11.9 × 9.3 cm (4 11/16 × 3 11/16 in.)  
The J. Paul Getty Museum, Los Angeles  
*Status unknown, research required*  
84.XM.167.1



4. Jaromír Funke  
Czech, 1896 - 1945  
[Neon Signs](#), 1930s  
Gelatin silver print  
Image: 7.9 × 7.5 cm (3 1/8 × 2 15/16 in.)  
The J. Paul Getty Museum, Los Angeles  
© Miloslava Rupesová  
84.XM.148.70



5. Unknown maker, American  
New York Edison Co. Photographic Bureau  
American, active 1901 – 1936  
[A Night View of Broadway Looking North from 45th Street](#), 1923  
Gelatin silver print  
Image: 17.8 × 22.8 cm (7 × 9 in.)  
The J. Paul Getty Museum, Los Angeles  
84.XM.239.68



7. Andreas Feininger  
American, born France, 1906 - 1999  
[Stockholm](#), 1937  
Gelatin silver print  
Image: 19 × 24 cm (7 1/2 × 9 7/16 in.)  
The J. Paul Getty Museum, Los Angeles, Gift of the Estate of Gertrud E. (Wysse) Feininger  
© *Estate of Gertrud E. Feininger*  
2011.43.5



9. Val Telberg  
American, born Russia, 1910 - 1995  
[New York](#), 1949  
Gelatin silver print  
Image: 27.8 × 45.6 cm (10 15/16 × 17 15/16 in.)  
The J. Paul Getty Museum, Los Angeles  
© *Estate of Val Telberg*  
84.XM.228.17



6. André Kertész  
American, born Hungary, 1894 - 1985  
[Paris Street at Night](#), 1925-26  
Gelatin silver print  
Image: 2.9 × 3.8 cm (1 1/8 × 1 1/2 in.)  
The J. Paul Getty Museum, Los Angeles  
© *Estate of André Kertész*  
86.XM.706.15



8. Bill Brandt  
English, born Germany, 1904 - 1983  
[Blackout in London, Street in a Bombed Area](#), 1941  
Gelatin silver print  
Sheet: 18.7 × 14.9 cm (7 3/8 × 5 7/8 in.)  
The J. Paul Getty Museum, Los Angeles  
© *Bill Brandt Archive, Ltd.*  
84.XP.208.14



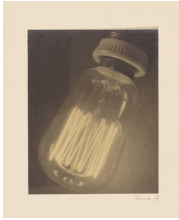
10. Robert Adams  
American, born 1937  
[Boulder County, Colorado](#), 1984  
Gelatin silver print  
Image: 12.7 × 12.7 cm (5 × 5 in.)  
The J. Paul Getty Museum, Los Angeles  
© *Robert Adams*  
2003.482.8



11. Karl F. Struss  
American, 1886 - 1981  
[110th Street Station, Twilight, New York City](#), 1911  
Platinum print  
Image: 9.4 × 11.6 cm (3 11/16 × 4 9/16 in.)  
The J. Paul Getty Museum, Los Angeles  
© 1983 Amon Carter Museum of American Art, Fort Worth, Texas  
84.XM.168.3



12. Jaromír Funke  
Czech, 1896 - 1945  
[Light Fixture](#), About 1925  
Gelatin silver print  
Image: 23.4 × 28.9 cm (9 1/4 × 11 3/8 in.)  
The J. Paul Getty Museum, Los Angeles  
© Miloslava Rupesová  
84.XM.148.86



13. Květoslav Trojna  
Czech, active 1930s  
[Lightbulb](#), About 1930  
Gelatin silver print  
Image: 21.4 × 17 cm (8 7/16 × 6 11/16 in.)  
The J. Paul Getty Museum, Los Angeles  
*Status undetermined*  
84.XP.147.24



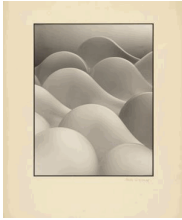
14. Osamu Shiihara  
Japanese, 1905 - 1974  
[Sundown](#), 1935-40  
Gelatin silver print  
Image: 26.7 × 21.6 cm (10 1/2 × 8 1/2 in.)  
The J. Paul Getty Museum, Los Angeles  
© Estate of Osamu Shiihara  
2008.58.1



15. Barbara Morgan (Barbara Johnson)  
American, 1900 - 1992  
[Pure Energy and Neurotic Man](#), 1940-41  
Gelatin silver print  
Image: 38.1 × 49.8 cm (15 × 19 5/8 in.)  
The J. Paul Getty Museum, Los Angeles  
*Reproduced courtesy of the Barbara and Willard Morgan Photographs and Papers, UCLA Department of Special Collections*  
95.XM.75.1



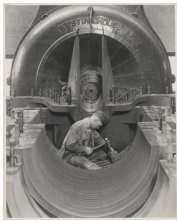
16. Václav Chochola  
Czech, 1923 - 2005  
[Reflector III](#), 1947  
Gelatin silver print  
Image: 39.5 × 29.5 cm (15 9/16 × 11 5/8 in.)  
The J. Paul Getty Museum, Los Angeles  
© Archive B&M Chochola  
2009.98



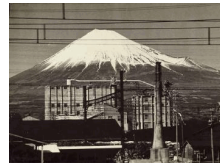
17. Fred G. Korth  
American, born Germany, 1902 - 1983  
[Lightbulbs](#), About 1938  
Gelatin silver print  
Image: 33.7 x 26.2 cm (13 1/4 x 10 5/16 in.)  
The J. Paul Getty Museum, Los Angeles  
*Status undetermined*  
86.XM.13.13



18. Jaroslav Rössler  
Czech, 1902 - 1990  
[Self-Portrait, Paris](#), About 1931-32  
Gelatin silver print  
Image: 17.5 x 18.3 cm (6 7/8 x 7 3/16 in.)  
The J. Paul Getty Museum, Los Angeles  
© *Sylva Vítová-Rösslerová*  
84.XM.146.17



19. Lewis W. Hine  
American, 1874 - 1940  
[Heart of the Turbine](#), Negative, 1920s; print, 1930  
Gelatin silver print  
Image: 24.1 x 19.4 cm (9 1/2 x 7 5/8 in.)  
The J. Paul Getty Museum, Los Angeles  
84.XM.470.8



20. Gen Otsuka  
Japanese, 1912 - 1992  
[Mt. Fuji From a Train, Near Fujinomiya](#), 1955  
Gelatin silver print  
Image: 22.2 x 30.8 cm (8 3/4 x 12 1/8 in.)  
The J. Paul Getty Museum, Los Angeles, Gift of Masako Otsuka  
© *Masako Otsuka*  
2014.91.8



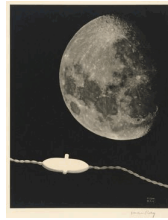
21. André Kertész  
American, born Hungary, 1894 - 1985  
[Electric Company Basement](#), 1930s  
Gelatin silver print  
Image: 23.2 x 29.7 cm (9 1/8 x 11 11/16 in.)  
The J. Paul Getty Museum, Los Angeles  
© *Estate of André Kertész*  
86.XM.706.39



22. Jaroslav Rössler  
Czech, 1902 - 1990  
[Telephone Wires](#), Prague, 1922-23  
Gelatin silver print  
Image: 22 x 24.8 cm (8 11/16 x 9 3/4 in.)  
The J. Paul Getty Museum, Los Angeles  
© *Sylva Vítová-Rösslerová*  
84.XM.146.13



23. Martin Munkácsi  
American, born Hungary, 1896 - 1963  
[High Voltage, Berlin](#), 1930s  
Gelatin silver print  
Image: 29.3 x 23.5 cm (11 9/16 x 9 1/4 in.)  
The J. Paul Getty Museum, Los Angeles  
© Estate of Martin Munkácsi, Courtesy Howard Greenberg Gallery, NYC  
84.XM.203.26



24. Man Ray  
American, 1890 - 1976  
[The World](#), 1931  
Photogravure  
Image: 26 x 20.5 cm (10 1/4 x 8 1/16 in.)  
The J. Paul Getty Museum, Los Angeles  
© Man Ray Trust ARS-ADAGP  
84.XM.1000.104



25. Willy Zielke  
Polish, 1902 - 1989  
[Switches and Sockets, Munich](#), 1933  
Gelatin silver print  
Image: 22.9 x 16.8 cm (9 x 6 5/8 in.)  
The J. Paul Getty Museum, Los Angeles  
Status undetermined  
84.XM.907.17



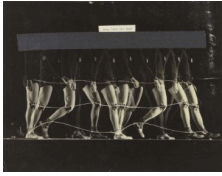
26. Xing, Danwen  
Chinese, born 1967  
[disCONNEXION #a5](#), 2005  
Chromogenic print  
Image: 73.8 x 59.3 cm (29 1/16 x 23 3/8 in.)  
The J. Paul Getty Museum, Los Angeles  
© Xing Danwen  
2010.29.2



27. Lewis Baltz  
American, 1945 - 2014  
[Park City, Utah](#), 1979  
Gelatin silver print  
Image: 16.2 x 24.1 cm (6 3/8 x 9 1/2 in.)  
The J. Paul Getty Museum, Los Angeles, Gift of Professors Joseph and Elaine Monsen  
© Estate of Lewis Baltz  
92.XM.55.3



28. George Watson  
American, 1892 - 1977  
[And Then There Was Sound](#), 1920s  
Gelatin silver print  
Image: 20.3 x 25.4 cm (8 x 10 in.)  
The J. Paul Getty Museum, Los Angeles  
© The Watson Family Photo Collection  
2001.65.15



29. Gjon Mili  
American, born Albania, 1904 - 1984  
[Study on How Men Walk, Man Wired with Lights, Walter Reed Hospital, Washington, D.C., 1946](#)  
Gelatin silver print  
Image: 26.7 × 34 cm (10 1/2 × 13 3/8 in.)  
The J. Paul Getty Museum, Los Angeles, Gift of Nina and Leo Pircher  
© *Time Life Pictures*  
2009.138.9



30. George Watson  
American, 1892 - 1977  
[Testing Synchronized Flash Powder, 1920](#)  
Gelatin silver print  
Image: 25.7 × 20.3 cm (10 1/8 × 8 in.)  
The J. Paul Getty Museum, Los Angeles  
© *The Watson Family Photo Collection*  
2001.65.1



31. Harold Edgerton  
American, 1903 - 1990  
[Rubber Balloon Broken by a Bullet, 1960](#)  
Gelatin silver print  
Image: 24 × 19.1 cm (9 7/16 × 7 1/2 in.)  
The J. Paul Getty Museum, Los Angeles, Gift of Gus and Arlette Kayafas  
© *The Harold and Esther Edgerton Family Foundation*  
93.XM.3.2



32. Unknown  
[Lightning Show, 1895](#)  
Gelatin silver print  
Image: 29.4 × 23.7 cm (11 9/16 × 9 5/16 in.)  
The J. Paul Getty Museum, Los Angeles  
*Status undetermined*  
84.XP.452.4



33. Keystone View Co.  
American, 1892 - 1963  
[Vying with the Aurora Borealis - Spectacular Electrical Display, Panama-Pacific International Exposition, San Francisco, 1915](#)  
Gelatin silver print  
Sheet: 8.9 × 17.8 cm (3 1/2 × 7 in.)  
The J. Paul Getty Museum, Los Angeles  
84.XC.729.153



34. Unknown maker  
[View of Electric Building, World's Columbian Exposition, Chicago, 1893](#)  
Albumen silver print  
Image: 18.4 × 24.1 cm (7 1/4 × 9 1/2 in.)  
The J. Paul Getty Museum, Los Angeles  
84.XM.1473.36



35. Guillaume-Benjamin Duchenne  
French, 1806 - 1875  
[Plate from the book Mécanisme de la Physionomie Humaine \(The Mechanism of Human Physiognomy\)](#),  
1876 edition  
Albumen silver print  
Image: 11.4 × 8.9 cm (4 1/2 × 3 1/2 in.)  
The J. Paul Getty Museum, Los Angeles  
84.XB.1342.2.34



36. Kunié Sugiura  
Japanese, born 1942  
[After Electric Dress A Positive 4, Negatives, 2001;](#)  
prints, 2002  
Gelatin silver prints, toned  
Image: 174 × 113 cm (68 1/2 × 44 1/2 in.)  
The J. Paul Getty Museum, Los Angeles, Purchased with  
funds provided by the Photographs Council  
© *Kunié Sugiura*  
2015.3



37. Naoya Hatakeyama  
Japanese, born 1958  
[Maquettes/Light #4913](#), Prints, 1995; light boxes  
produced later  
Gelatin silver prints in light boxes  
Image: 22.5 × 15 cm (8 7/8 × 5 7/8 in.)  
The J. Paul Getty Museum, Los Angeles  
© *Naoya Hatakeyama*  
2011.16.1



38. Naoya Hatakeyama  
Japanese, born 1958  
[Maquettes/Light #5121](#), Prints, 1995; light boxes  
produced later  
Gelatin silver prints in light boxes  
Image: 22.5 × 15 cm (8 7/8 × 5 7/8 in.)  
The J. Paul Getty Museum, Los Angeles  
© *Naoya Hatakeyama*  
2011.16.2



39. Naoya Hatakeyama  
Japanese, born 1958  
[Maquettes/Light #5806](#), Prints, 1995; light boxes  
produced later  
Gelatin silver prints in light boxes  
Image: 22.5 × 15 cm (8 7/8 × 5 7/8 in.)  
The J. Paul Getty Museum, Los Angeles  
© *Naoya Hatakeyama*  
2011.16.3



The J. Paul Getty Museum

March 22, 2016

Additional information about some of these works of art can be found by searching [getty.edu](http://www.getty.edu/art/collection/) at <http://www.getty.edu/art/collection/>

© 2016 J. Paul Getty Trust