

# Icons of Style: A Century of Fashion Photography, 1911-2011

June 26 to October 21, 2018

The J. Paul Getty Museum at the Getty Center



1. Louise Dahl-Wolfe  
American, 1895 - 1989  
*Keep the Home Fires Burning*, 1941  
Gelatin silver print  
Image: 13.7 × 13.1 cm (5 3/8 × 5 3/16 in.)  
The J. Paul Getty Museum, Los Angeles  
© 2018 Center for Creative Photography,  
Arizona Board of Regents / Artists Rights Society (ARS),  
New York  
84.XM.195.7



2. Louise Dahl-Wolfe  
American, 1895 - 1989  
*Andrea, Chinese Screen*, 1941  
Gelatin silver print  
Image: 32.6 × 27.8 cm (12 13/16 × 10 15/16 in.)  
The J. Paul Getty Museum, Los Angeles  
© 1989 Center for Creative Photography, Arizona Board  
of Regents / Artists Rights Society (ARS), New York  
84.XM.195.12



3. George Hoyningen-Huene  
American, born Russia, 1900 - 1968  
*Model Posed with a Statue*, New York, 1939  
Gelatin silver print  
Image: 27.9 × 21.6 cm (11 × 8 1/2 in.)  
The J. Paul Getty Museum, Los Angeles  
© Horst  
84.XM.196.4



4. Cecil Beaton  
British, 1904 - 1980  
*Debutantes—Baba Beaton, Wanda Baillie Hamilton &  
Lady Bridget Poulet*, 1928  
Gelatin silver print  
Image: 48.7 × 35.1 cm (19 3/16 × 13 13/16 in.)  
The J. Paul Getty Museum, Los Angeles  
© The Cecil Beaton Studio Archive at Sotheby's  
84.XP.457.16



5. Baron Adolf de Meyer  
American, born France, 1868 - 1946  
= *Baroness de Meyer in a Hat by Reboux*, 1929  
Gelatin silver print  
Image: 17.5 × 16.5 cm (6 7/8 × 6 1/2 in.)  
The J. Paul Getty Museum, Los Angeles  
Copyright: Status undetermined  
84.XP.458.1



6. Edward Steichen  
American, born Luxembourg, 1879 - 1973  
= *Mrs. Arthur Gordon Bowman, formerly Miss Electra Waggoner, in Wedding Gown by Hattie Carnegie for "Vogue"*, 1933  
Gelatin silver print  
Image: 23.7 × 18.6 cm (9 5/16 × 7 5/16 in.)  
The J. Paul Getty Museum, Los Angeles  
© Condé Nast / Vogue, 1933  
84.XP.461.1



7. William Klein  
American, born 1928  
= *"Vogue," Chapeau*, Negative, 1957; print, 1979  
Gelatin silver print  
Image: 33.5 × 24 cm (13 3/16 × 9 7/16 in.)  
The J. Paul Getty Museum, Los Angeles  
© William Klein  
84.XP.461.4



8. Baron Adolf de Meyer  
American, born France, 1868 - 1946  
= *Rita de Acosta Lydig*, Negative, 1913; print, 1914  
Gelatin silver print  
Image: 35.4 × 27.9 cm (13 15/16 × 11 in.)  
The J. Paul Getty Museum, Los Angeles  
84.XM.471.4



9. Dora Maar  
French, 1907 - 1997  
= *Model in Swimsuit*, 1936  
Gelatin silver print  
Image: 19.7 × 16.7 cm (7 3/4 × 6 9/16 in.)  
The J. Paul Getty Museum, Los Angeles  
© Dora Maar Estate/Artists Rights Society (ARS), New York/ADAGP, Paris  
84.XP.714.14



10. Edward Steichen  
American, born Luxembourg, 1879 - 1973  
= *Gloria Swanson*, 1924  
Gelatin silver print  
Image: 27.8 × 21.6 cm (10 15/16 × 8 1/2 in.)  
The J. Paul Getty Museum, Los Angeles  
© Condé Nast  
84.XM.848.5



11. Baron Adolf de Meyer  
American, born France, 1868 - 1946  
= *Gabrielle "Coco" Chanel*, About 1925  
Gelatin silver print  
Image: 23.9 × 19.1 cm (9 7/16 × 7 1/2 in.)  
The J. Paul Getty Museum, Los Angeles, Gift of Samuel  
J. Wagstaff, Jr.  
84.XP.983.3

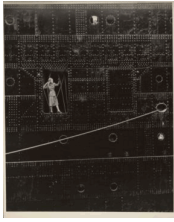


12. Man Ray (Emmanuel Radnitsky)  
American, 1890 - 1976  
= *Model Wearing a Gown by Augustabernard*, 1936  
Gelatin silver print  
Image: 28.9 × 22.7 cm (11 3/8 × 8 15/16 in.)  
The J. Paul Getty Museum, Los Angeles  
© *Man Ray Trust ARS-ADAGP*  
84.XM.1000.53

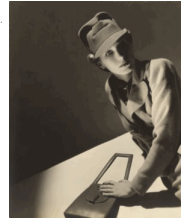


13. Man Ray (Emmanuel Radnitsky)  
American, 1890 - 1976  
= *Jewelry for Elsa Triolet*, 1928  
Gelatin silver print  
Image: 22.9 × 17.4 cm (9 × 6 7/8 in.)  
The J. Paul Getty Museum, Los Angeles  
© *Man Ray Trust ARS-ADAGP*  
84.XM.1000.168

14. Edward Steichen  
American, born Luxembourg, 1879 - 1973  
"Blidah" and "Battick" and "Negus" by Paul Poiret, 1911  
Photomechanical reproductions  
Closed: 28.9 × 21.6 × 4.8 cm (11 3/8 × 8 1/2 × 1 7/8 in.)  
The Getty Research Institute  
86-S453.v29-30



15. Bill Brandt  
English, born Germany, 1904 - 1983  
*Model on Ship*, About 1946  
Gelatin silver print  
Image: 24.6 × 19.5 cm (9 11/16 × 7 11/16 in.)  
The J. Paul Getty Museum, Los Angeles  
© *Bill Brandt Archive, Ltd.*  
86.XM.618.4



16. George Platt Lynes  
American, 1907 - 1955  
*Mrs. Lunning with Geometric Purse*, February 1937  
Gelatin silver print  
Image: 22.6 × 19 cm (8 7/8 × 7 1/2 in.)  
The J. Paul Getty Museum, Los Angeles, Gift of Mrs. Just Lunning  
*Used with permission of the George Platt Lynes estate*  
86.XM.746.1



17. Alexander Liberman  
born 1912  
*The Art and Technique of Color Photography*, 1951  
Publication  
Closed: 33 × 25.4 × 2.2 cm (13 × 10 × 7/8 in.)  
The Getty Research Institute  
86-B23280

18. Guy Bourdin  
French, 1928 - 1991  
*Untitled, for Bloomingdale's*, About 1977  
Gelatin silver print  
Image: 24.1 × 34.3 cm (9 1/2 × 13 1/2 in.)  
The J. Paul Getty Museum, Los Angeles, Gift of Arthur and Jeanne Cohen to honor Lucas and Juliette Cohen  
© *The Guy Bourdin Estate*  
2003.509.3



19. Alfred Eisenstaedt  
 American, born Germany, 1898 - 1995  
 = *Hat Designer Lily Daché Conducting Research at the New York Public Library, 1944*  
 Gelatin silver print  
 Image: 33.8 × 27.2 cm (13 5/16 × 10 11/16 in.)  
 The J. Paul Getty Museum, Los Angeles, Gift of Nina and Leo Pircher  
 © Alfred Eisenstaedt / The LIFE Picture Collection / Getty Images  
 2008.48.6



20. Gjon Mili  
 American, born Albania, 1904 - 1984  
 = *Fashion Ad for Saks Fifth Avenue, About 1946*  
 Gelatin silver print  
 Image: 26.7 × 34.1 cm (10 1/2 × 13 7/16 in.)  
 The J. Paul Getty Museum, Los Angeles, Gift of Nina and Leo Pircher  
 © Gjon Mili / The LIFE Picture Collection / Getty Images  
 2009.138.16



21. Herb Ritts  
 American, 1952 - 2002  
 = *Fred with Tires, Hollywood, 1984*  
 Gelatin silver print  
 Image: 47.1 × 38.6 cm (18 9/16 × 15 3/16 in.)  
 The J. Paul Getty Museum, Los Angeles, Gift of Herb Ritts Foundation  
 © Herb Ritts Foundation  
 2011.18.25



22. Herb Ritts  
 American, 1952 - 2002  
 = *Stephanie, Cindy, Christy, Tatjana, Naomi, Hollywood, 1989*  
 Gelatin silver print  
 Image: 46.8 × 50.3 cm (18 7/16 × 19 13/16 in.)  
 The J. Paul Getty Museum, Los Angeles, Gift of Herb Ritts Foundation  
 © Herb Ritts Foundation  
 2011.18.28



23. Lillian Bassman  
 American, 1917 - 2012  
 = *The V Back Evenings, Suzy Parker, Dress by Trigère, New York, 1955*  
 Gelatin silver print  
 Image: 24.1 × 21.7 cm (9 1/2 × 8 9/16 in.)  
 The J. Paul Getty Museum, Los Angeles  
 © The Estate of Lillian Bassman  
 2011.35



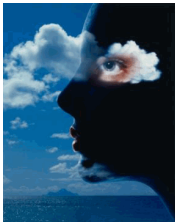
24. Lillian Bassman  
 American, 1917 - 2012  
 = *Solarized Fashion Study, About 1957*  
 Gelatin silver print  
 Image: 33.7 × 25.7 cm (13 1/4 × 10 1/8 in.)  
 The J. Paul Getty Museum, Los Angeles, Gift of Lillian Bassman  
 © The Estate of Lillian Bassman  
 2011.41



25. Sarah Moon  
French, born England, 1941  
= *Sveta for Hussein Chalayan*, 2000 Carbon print  
Image: 57.2 × 43.4 cm (22 1/2 × 17 1/16 in.)  
The J. Paul Getty Museum, Los Angeles  
© Sarah Moon  
2011.52



26. Hiro  
American, born China, 1930  
= *Black Evening Dress in Flight*, New York, Negative 1963; print 1994  
Dye imbibition print  
Image: 48.9 × 38.1 cm (19 1/4 × 15 in.)  
The J. Paul Getty Museum, Los Angeles, Purchased with funds provided by the Photographs Council  
© Hiro  
2012.24.2



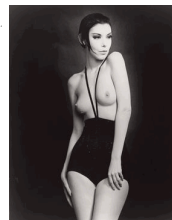
27. Hiro  
American, born China, 1930  
= *Kelly Stewart*, New York, Negative 1994; print 2011  
Pigment print  
Image: 51.3 × 40.7 cm (20 3/16 × 16 in.)  
The J. Paul Getty Museum, Los Angeles, Purchased with funds provided by the Photographs Council  
© Hiro  
2012.24.10



28. Louise Dahl-Wolfe  
American, 1895 - 1989  
= *Modern and Classic Beauty*, About 1950  
Gelatin silver print  
Image: 13.3 × 11.5 cm (5 1/4 × 4 1/2 in.)  
The J. Paul Getty Museum, Los Angeles, Gift of Paul Martineau  
© 1989 Center for Creative Photography, Arizona Board of Regents  
2014.74



29. Hiro  
American, born China, 1930  
= *Alberta Tiburzi with Neon Necklace*, Paris, 1967  
Gelatin silver print  
Image: 46.4 × 32.4 cm (18 1/4 × 12 3/4 in.)  
The J. Paul Getty Museum, Los Angeles, Gift of Anne B. Cohen Ruderman  
© Hiro  
2014.75



30. William Claxton  
American, 1927 - 2008  
= *Peggy Moffitt in Rudi Gernreich Topless Swimsuit*, 1964  
Gelatin silver print  
Image: 35.2 × 27.8 cm (13 7/8 × 10 15/16 in.)  
The J. Paul Getty Museum, Los Angeles  
© The William Claxton Estate  
2015.24.1



31. Erwin Blumenfeld  
American, born Germany, 1897 - 1969  
*New York ("Care Gives...Eloquence to the Hands")*, 1942  
Gelatin silver print with applied blue colorant  
Image: 49.4 × 37.5 cm (19 7/16 × 14 3/4 in.)  
The J. Paul Getty Museum, Los Angeles  
© *The Estate of Erwin Blumenfeld*  
2015.86.2



32. William Klein  
American, born 1928  
*Simone and Marine, Pont Alexandre III, Paris*, Negative 1961; print 1990  
Gelatin silver print  
Image: 30.1 × 24.1 cm (11 7/8 × 9 1/2 in.)  
The J. Paul Getty Museum, Los Angeles, Purchased in part with funds provided by Debbie and Mark Attanasio  
© *William Klein*  
2016.12.1



33. Erwin Blumenfeld  
American, born Germany, 1897 - 1969  
*Fashion Study, Lisa Fonssagrives, Paris*, 1938  
Gelatin silver print  
Image: 29.5 × 20 cm (11 5/8 × 7 7/8 in.)  
The J. Paul Getty Museum, Los Angeles  
© *The Estate of Erwin Blumenfeld*  
2016.18



34. Willy Maywald  
German, 1907 - 1985  
*"Liszt" Gown by Dior, Paris*, 1948  
Gelatin silver print  
Image: 40.3 × 30.5 cm (15 7/8 × 12 in.)  
The J. Paul Getty Museum, Los Angeles  
© 2018 Association Willy Maywald/Artists Rights Society (ARS), New York/ADAGP, Paris  
2016.21



35. Edward Steichen  
American, born Luxembourg, 1879 - 1973  
*Actress Caja Eric Modeling a Gown by Chanel, New York*, 1928  
Gelatin silver print  
Image: 24.2 × 19.3 cm (9 1/2 × 7 5/8 in.)  
The J. Paul Getty Museum, Los Angeles  
© *Condé Nast / Vogue, 1928*  
2016.28



36. Horst P. Horst  
American, born Germany, 1906 - 1999  
*Jean Patchett in a Jacket and Matching Dress by Mollie Parness for "Vogue"*, Negative 1949; print about 1985  
Gelatin silver print  
Image: 45.7 × 35 cm (18 × 13 3/4 in.)  
The J. Paul Getty Museum, Los Angeles  
© *Condé Nast / Vogue, March 1, 1949*  
2016.29



37. Ray Kellman  
 American, born 1923  
*Models Wearing Hats, New York, 1960s*  
 Gelatin silver print  
 Image: 42.5 × 34.6 cm (16 3/4 × 13 5/8 in.)  
 The J. Paul Getty Museum, Los Angeles  
 © Ray Kellman  
 2016.30



38. Norman Parkinson  
 British, 1913 - 1990  
*Golfing at Le Touquet, 1939*  
 Gelatin silver print  
 Image: 40 × 28.5 cm (15 3/4 × 11 1/4 in.)  
 The J. Paul Getty Museum, Los Angeles, Purchased with funds provided by the Photographs Council  
 © Norman Parkinson Ltd./Courtesy Norman Parkinson Archive  
 2016.89.1



39. Norman Parkinson  
 British, 1913 - 1990  
*A Spring Hat and the City of Bath, 1948*  
 Gelatin silver print  
 Image: 25.8 × 24.6 cm (10 3/16 × 9 11/16 in.)  
 The J. Paul Getty Museum, Los Angeles, Purchased with funds provided by the Photographs Council  
 © Norman Parkinson Ltd./Courtesy Norman Parkinson Archive  
 2016.89.2



40. Sheila Metzner  
 American, born 1939  
*Uma in Dress by Patou, 1986*  
 Pigment print  
 Image: 62.7 × 41.8 cm (24 11/16 × 16 7/16 in.)  
 The J. Paul Getty Museum, Los Angeles, Purchased with funds provided by the Photographs Council  
 © Sheila Metzner  
 2016.90



41. Victor Skrebneski  
 American, born 1929  
*Givenchy Red, Paris, Negative 1990; print about 1995*  
 Silver-dye bleach print  
 Image: 51 × 40.4 cm (20 1/16 × 15 7/8 in.)  
 The J. Paul Getty Museum, Los Angeles, Purchased with funds provided by the Photographs Council  
 © Victor Skrebneski  
 2016.92



42. Neal Barr  
 American, born 1932  
*Diana Newman, 1966*  
 Gelatin silver print  
 Image: 43.2 × 35.3 cm (17 × 13 7/8 in.)  
 The J. Paul Getty Museum, Los Angeles, Purchased with funds provided by the Photographs Council  
 © Neal Barr  
 2016.94





43. Neal Barr  
American, born 1932  
*Cathee Dahmen in Castillo, Paris, 1968*  
Gelatin silver print  
Image: 37.4 × 37.4 cm (14 3/4 × 14 3/4 in.)  
The J. Paul Getty Museum, Los Angeles, Gift of Neal Barr  
© *Neal Barr*  
2016.95.1



44. Paolo Roversi  
Italian, born 1947  
*Guinevere in Black Dress by Yohji Yamamoto, Paris, Negative, 1996; printed later*  
Pigment print  
Image: 51.8 × 40 cm (20 3/8 × 15 3/4 in.)  
The J. Paul Getty Museum, Los Angeles, Purchased with funds provided by the Photographs Council  
© *Paolo Roversi*  
2016.96



45. Horst P. Horst  
American, born Germany, 1906 - 1999  
*Birthday Gloves, New York, Negative 1947; print 1989*  
Gelatin silver print  
Image: 28.8 × 22.8 cm (11 5/16 × 9 in.)  
The J. Paul Getty Museum, Los Angeles, Gift of David Fahey, Fahey/Klein Gallery  
© *Condé Nast*  
2016.113.5



46. Guy Bourdin  
French, 1928 - 1991  
*Chapeau Choc, 1954*  
Gelatin silver print  
Image: 16.6 × 22.7 cm (6 9/16 × 8 15/16 in.)  
The J. Paul Getty Museum, Los Angeles, Partial purchase with funds provided by the Photographs Council; partial gift of The Guy Bourdin Estate  
© *The Guy Bourdin Estate*  
2017.21.1



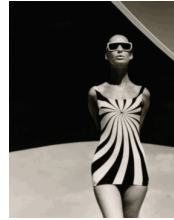
47. Guy Bourdin  
French, 1928 - 1991  
*Model Wearing a Hat, Paris, 1955*  
Gelatin silver print  
Image: 23.1 × 19.6 cm (9 1/8 × 7 11/16 in.)  
The J. Paul Getty Museum, Los Angeles, Partial purchase with funds provided by the Photographs Council; partial gift of Ayse and Frederic Arnal  
© *The Guy Bourdin Estate*  
2017.21.2



48. Arthur Elgort  
American, born 1940  
*Wendy Whitelaw, New York City, Negative 1981; print 2016*  
Gelatin silver print  
Image: 30.4 × 45.8 cm (11 15/16 × 18 1/16 in.)  
The J. Paul Getty Museum, Los Angeles, Gift of Arthur Elgort  
© *Arthur Elgort*  
2017.71.1



49. Arthur Elgort  
American, born 1940  
*Lisa Taylor, George Washington Bridge, New York*,  
Negative 1979; print 2016  
Inkjet print  
Image: 30.6 × 45.6 cm (12 1/16 × 17 15/16 in.)  
The J. Paul Getty Museum, Los Angeles, Gift of Arthur  
Elgort  
© *Arthur Elgort*  
2017.71.3



50. F.C. Gundlach  
German, born 1926  
*Op Art Fashion: Brigitte Bauer, Bathing Suit by Sinz, Vouliagmeni, Greece*, 1966  
Gelatin silver print  
Image: 30.5 × 24.1 cm (12 × 9 1/2 in.)  
The J. Paul Getty Museum, Los Angeles  
© *F. C. Gundlach*  
2017.82



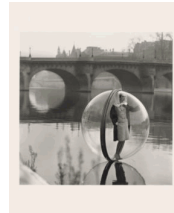
51. Deborah Turbeville  
American, 1932 - 2013  
*Bath House*, Negative 1975; print about 1980  
Gelatin silver print  
Image: 40.6 × 60.8 cm (16 × 23 15/16 in.)  
The J. Paul Getty Museum, Los Angeles, Gift of Estate of  
Deborah Turbeville  
© *Deborah Turbeville Foundation*  
2017.90



52. Melvin Sokolsky  
American, born 1933  
*Simone, Ecstasy, New York*, Negative 1960; print  
1970–80  
Gelatin silver print  
Image: 44.3 × 36 cm (17 7/16 × 14 3/16 in.)  
The J. Paul Getty Museum, Los Angeles, Purchased with  
funds provided by the Photographs Council  
© *Melvin Sokolsky, Courtesy Peter Fetterman Gallery*  
2017.109.1



53. Melvin Sokolsky  
American, born 1933  
*Carmen Las Meninas (Carmen Dell'Orefice and Melvin Sokolsky)*, *New York*, Negative 1960; print 1970–80  
Gelatin silver print  
Image: 45.4 × 35.3 cm (17 7/8 × 13 7/8 in.)  
The J. Paul Getty Museum, Los Angeles, Purchased with  
funds provided by the Photographs Council  
© *Melvin Sokolsky, Courtesy Peter Fetterman Gallery*  
2017.109.2



54. Melvin Sokolsky  
American, born 1933  
*On the Seine (Simone D'Aillencourt)*, *Paris*, Negative  
1963; print 1970–1980  
Gelatin silver print  
Image: 35.6 × 35.4 cm (14 × 13 15/16 in.)  
The J. Paul Getty Museum, Los Angeles, Purchased with  
funds provided by the Photographs Council  
© *Melvin Sokolsky, Courtesy Peter Fetterman Gallery*  
2017.109.4



55. Glen Luchford  
British, born 1968  
*Kate Moss, Times Square, New York*, Negative 1994;  
print 2017  
Gelatin silver print  
Image: 39.8 × 53.2 cm (15 11/16 × 20 15/16 in.)  
The J. Paul Getty Museum, Los Angeles, Gift of Glen and  
Tanya Luchford  
© *Glen Luchford*  
2017.121.1



56. Glen Luchford  
British, born 1968  
*Malgosia Bela, Self Service, Venice, CA*, Negative 2011;  
print 2017  
Gelatin silver print  
Image: 37 × 53.2 cm (14 9/16 × 20 15/16 in.)  
The J. Paul Getty Museum, Los Angeles, Gift of Glen and  
Tanya Luchford  
© *Glen Luchford*  
2017.121.4



57. Peter Lindbergh  
German, born Poland, born 1944  
*Michaela Bercu, Linda Evangelista, Kirsten Owen–Pont à  
Mousson, France*, Negative 1988; print 1997  
Platinum print  
Image: 38 × 49.5 cm (14 15/16 × 19 1/2 in.)  
The J. Paul Getty Museum, Los Angeles, Purchased with  
funds provided by Debbie and Mark Attanasio  
© *Peter Lindbergh*  
2018.6



58. Helmut Newton  
Australian, born Germany, 1920 - 2004  
*Woman into Man, Paris 1979*, Negative 1979; print about  
1984  
Gelatin silver print  
Image: 24 × 36 cm (9 7/16 × 14 3/16 in.)  
The J. Paul Getty Museum, Los Angeles, Gift of the  
Helmut Newton Foundation  
© *The Helmut Newton Estate*  
*Image courtesy of Maconochie Photography*  
2018.34.1



59. Helmut Newton  
Australian, born Germany, 1920 - 2004  
*Woman Examining Man, Saint-Tropez 1975*, Negative  
1975; print about 1984  
Gelatin silver print  
Image: 24 × 36 cm (9 7/16 × 14 3/16 in.)  
The J. Paul Getty Museum, Los Angeles, Gift of the  
Helmut Newton Foundation  
© *The Helmut Newton Estate*  
*Image courtesy of Maconochie Photography*  
2018.34.35

60. Philippe Halsman  
American, born Latvia, 1906 - 1979  
LIFE Magazine  
*Grace Kelly, "Life," April 11, 1955*, 1955  
Photomechanical reproduction  
Closed: 61 × 26.7 cm (24 × 10 1/2 in.)  
Private Collection  
EE.2018.8

61. Bill King

American, 1939 - 1987

*Diana Vreeland, Blackglama Ad, 1977*

Photomechanical reproduction

Closed: 29.2 × 21 cm (11 1/2 × 8 1/4 in.)

Private Collection

EE.2018.9



63. James Moore

American, 1936 - 2006

Harper's Bazar

founded 1867

*"Over 40 Beautiful Body Guide," "Harper's Bazaar",*

September 1981

Photomechanical reproduction

Closed: 27.3 × 22.9 cm (10 3/4 × 9 in.)

Private Collection

EE.2018.11

62. Jonas Bresnan

Australian, born 1983

*Andrej Pejić, Hombre O Mujer?, S Moda, October 2011,*

2011

Gelatin silver print

Closed: 27.3 × 20.3 cm (10 3/4 × 8 in.)

Private Collection

EE.2018.10

64. Eclipse Enterprises

active 1990s

*AIDS Awareness cards, Halston, 1993*

Offset lithograph

Sheet: 8.9 × 8.9 cm (3 1/2 × 3 1/2 in.)

Private Collection

EE.2018.13

65. Eclipse Enterprises

active 1990s

*AIDS Awareness card, Perry Ellis, 1993*

Offset lithograph

Sheet: 8.9 × 8.9 cm (3 1/2 × 3 1/2 in.)

Private Collection

EE.2018.14

66. Eclipse Enterprises

active 1990s

*AIDS Awareness card, Way Bandy, 1993*

Offset lithograph

Sheet: 8.9 × 8.9 cm (3 1/2 × 3 1/2 in.)

Private Collection

EE.2018.15

67. Eclipse Enterprises  
active 1990s  
*AIDS Awareness card, Rudi Gernreich, 1993*  
Offset lithograph  
Sheet: 8.9 × 8.9 cm (3 1/2 × 3 1/2 in.)  
Private Collection  
EE.2018.16

68. Eclipse Enterprises  
active 1990s  
*AIDS Awareness card, Tina Chow, 1993*  
Offset lithograph  
Sheet: 8.9 × 8.9 cm (3 1/2 × 3 1/2 in.)  
Private Collection  
EE.2018.17

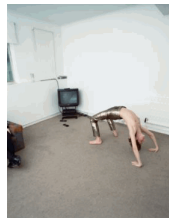


69. Jean-Paul Goude  
French, born 1940  
*Grace Jones/Nightclubbing, 1981*  
Lithograph  
Sheet: 31.4 × 31.4 cm (12 3/8 × 12 3/8 in.)  
Private Collection  
EE.2018.18

70. Francesco Scavullo  
American, 1921 - 2004  
Vogue  
*Beverly Johnson, "Vogue," August 1974, 1974*  
Photomechanical reproduction  
Image: 30.5 × 25.4 cm (12 × 10 in.)  
Private Collection  
© Condé Nast / Vogue, August 1, 1974  
EE.2018.19



71. David Sims  
British, born 1966  
*Yohji Yamamoto, Autumn/Winter 1995, 1995*  
Chromogenic print  
Image: 88.9 × 71.1 cm (35 × 28 in.)  
David Sims  
© David Sims  
EX.2018.7.1



72. Corinne Day  
British, 1962 - 2010  
*Rose in Golden Trousers, Negative, 1993; printed later*  
Chromogenic print  
Sheet: 40.6 × 50.8 cm (16 × 20 in.)  
Courtesy of the Estate of Corinne Day and Gimpel Fils  
© Estate of Corinne Day and Gimpel Fils  
EX.2018.7.2



73. Corinne Day  
 British, 1962 - 2010  
*Guatemala, French Vogue*, Negative, 2002; printed later  
 Chromogenic print  
 Sheet: 40.6 × 50.8 cm (16 × 20 in.)  
 Courtesy of the Estate of Corinne Day and Gimpel Fils  
 © *Estate of Corinne Day and Gimpel Fils*  
 EX.2018.7.3



74. Mert Alas & Marcus Piggott  
 Turkish and Welsh, born 1971  
*Untitled, New York (Model with Cat)*, 2006  
 Gelatin silver print  
 Sheet: 50.8 × 40.6 cm (20 × 16 in.)  
 Courtesy of Mert Alas & Marcus Piggott  
 © *Mert Alas & Marcus Piggott*  
 EX.2018.7.4



75. Mert Alas & Marcus Piggott  
 Turkish and Welsh, born 1971  
*The Mask, London*, 2010  
 Gelatin silver print  
 Sheet: 50.8 × 40.6 cm (20 × 16 in.)  
 Courtesy of Mert Alas & Marcus Piggott  
 © *Mert Alas & Marcus Piggott*  
 EX.2018.7.5



76. Guy Bourdin  
 French, 1928 - 1991  
*Untitled, for Charles Jourdan, Spring 1977*, Negative 1977; printed later  
 Chromogenic print  
 Image: 45.7 × 34.3 cm (18 × 13 1/2 in.)  
 The Estate of Guy Bourdin, courtesy Louise Alexander Gallery  
*Image copyright The Guy Bourdin Estate 2018, Courtesy of Louise Alexander Gallery*  
 EX.2018.7.6



77. Cecil Beaton  
 British, 1904 - 1980  
*Princess Natasha Paley*, 1935  
 Bromide print  
 Image: 24.4 × 19.2 cm (9 5/8 × 7 9/16 in.)  
 Lent by the National Portrait Gallery, London  
 © *The Cecil Beaton Studio Archive at Sotheby's*  
 EX.2018.7.7



78. Norman Parkinson  
 British, 1913 - 1990  
*The New Mayfair Edwardians (Peter Coats; William Ackroyd; Mark Gilbey)*, 1950  
 Bromide print  
 Image: 49.7 × 39 cm (19 9/16 × 15 3/8 in.)  
 Lent by the National Portrait Gallery, London  
 © *Norman Parkinson Ltd. / Courtesy Norman Parkinson Archive*  
 EX.2018.7.8



79. Nick Knight  
British, born 1958  
*Red Coat I, Naomi Campbell for Yohji Yamamoto*, 1987  
Chromogenic print  
Image: 30.5 × 24.1 cm (12 × 9 1/2 in.)  
Courtesy of Nick Knight  
© Nick Knight  
EX.2018.7.9



80. Terence Donovan  
British, 1936 - 1996  
*Thermodynamic*, 1961  
Gelatin silver print  
Image: 47.5 × 48 cm (18 11/16 × 18 7/8 in.)  
Courtesy of Terence Donovan Archive  
© Terence Donovan Archive  
EX.2018.7.11

81. George Hoyningen-Huene  
American, born Russia, 1900 - 1968  
*Photo Shoot with Beachwear by Schiaparelli*, 1928  
Gelatin silver print  
Image: 24.2 × 18.8 cm (9 1/2 × 7 3/8 in.)  
Victoria and Albert Museum, London  
© Condé Nast / Vogue, 1928  
EX.2018.7.12

82. Horst P. Horst  
American, born Germany, 1906 - 1999  
*White Sleeve*, 1936  
Gelatin silver print  
Image: 23.3 × 18.2 cm (9 3/16 × 7 3/16 in.)  
Victoria and Albert Museum, London  
© Condé Nast / Vogue, March 1, 1936  
EX.2018.7.13



83. Man Ray (Emmanuel Radnitsky)  
American, 1890 - 1976  
*Model Wearing Vionnet Evening Gown with "Brouette" by Oscar Dominguez*, 1937  
Gelatin silver print  
Image: 14 × 16.5 cm (5 1/2 × 6 1/2 in.)  
Victoria and Albert Museum, London  
© Man Ray Trust / Artists Rights Society (ARS), New York / ADAGP, Paris  
EX.2018.7.14

84. Bruce Weber  
American, born 1946  
*Bruce Hulse and Talisa Soto for British Vogue, Bellport, NY*, 1982  
Gelatin silver print  
Image: 59.7 × 49.5 cm (23 1/2 × 19 1/2 in.)  
Courtesy of Bruce Weber and Nan Bush  
© Bruce Weber  
EX.2018.7.17



85. George Hoyningen-Huene  
American, born Russia, 1900 - 1968  
*Miss Sonja, Pajamas by Vionnet, Paris, 1931*  
Gelatin silver print  
Image: 15.4 × 20.1 cm (6 1/16 × 7 15/16 in.)  
F. C. Gundlach Foundation, Hamburg  
© Horst  
EX.2018.7.22



86. George Hoyningen-Huene  
American, born Russia, 1900 - 1968  
*Miss Sonja, Pajamas by Vionnet, Paris, 1931*  
Gelatin silver print  
Image: 15.4 × 20.1 cm (6 1/16 × 7 15/16 in.)  
F. C. Gundlach Foundation, Hamburg  
© Horst  
EX.2018.7.23



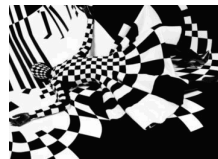
87. Imre von Santho  
Hungarian, 1900 - 1946  
*White Flamisol Dress, 1936*  
Gelatin silver print  
Image: 22.6 × 23.8 cm (8 7/8 × 9 3/8 in.)  
F. C. Gundlach Foundation, Hamburg  
EX.2018.7.24



88. Regina Relang  
German, 1906 - 1989  
*Ivy Nicholson Wearing Jacques Griffe, 1952*  
Gelatin silver print  
Image: 26.2 × 20.5 cm (10 5/16 × 8 1/16 in.)  
F. C. Gundlach Foundation, Hamburg  
Copyright: Münchner Stadtmuseum, Sammlung  
Fotografie, Archiv Relang  
EX.2018.7.25



89. Antonio Lopez  
American, 1943 - 1987  
*Illustration for "GQ" (Unpublished), 1984*  
Watercolor, gouache and pencil on paper  
Unframed: 57.2 × 38.4 cm (22 1/2 × 15 1/8 in.)  
Collection of El Museo del Barrio, New York. Gift of the  
Estate of Antonio Lopez and Juan Ramos, 2017  
© The Estate of Antonio Lopez and Juan Ramos  
EX.2018.7.27



90. Sølve Sundsbø  
Norwegian, born 1970  
*Camouflage, 2007*  
Chromogenic print  
Image: 61 × 71.1 cm (24 × 28 in.)  
Courtesy of the artist  
© Sølve Sundsbø / Art + Commerce  
EX.2018.7.28





91. Baron Adolf de Meyer  
 American, born France, 1868 - 1946  
 = *Frightened by a Mouse*, 1919  
 Gelatin silver print  
 Image: 22.9 × 18.4 cm (9 × 7 1/4 in.)  
 Courtesy of and copyright Condé Nast  
 © Condé Nast / *Vogue*, December 15, 1919  
 EX.2018.7.31



92. Edward Steichen  
 American, born Luxembourg, 1879 - 1973  
 = *Model Dinarzade in a Dress by Poiret, New York*, 1924  
 Gelatin silver print  
 Image: 25.4 × 20.3 cm (10 × 8 in.)  
 Courtesy of and copyright Condé Nast  
 © Condé Nast / *Vogue*, November 1, 1924  
 EX.2018.7.32



93. Edward Steichen  
 American, born Luxembourg, 1879 - 1973  
 = *Model Wearing a Black Tulle Headdress by J. Susan Talbot and a Brocade Coat with Black Fox Collar*, 1925  
 Gelatin silver print  
 Image: 25.4 × 20.3 cm (10 × 8 in.)  
 Courtesy of and copyright Condé Nast  
 © Condé Nast / *Vogue*, November 15, 1925  
 EX.2018.7.33



94. Edward Steichen  
 American, born Luxembourg, 1879 - 1973  
 = *Tamaris with a Large Art Deco Scarf*, New York, 1925  
 Gelatin silver print  
 Image: 25.4 × 20.3 cm (10 × 8 in.)  
 Courtesy of and copyright Condé Nast  
 © Condé Nast / *Vogue*, June 1, 1925  
 EX.2018.7.34



95. Edward Steichen  
 American, born Luxembourg, 1879 - 1973  
 = *Evening Shoes*, 1927  
 Gelatin silver print  
 Image: 25.4 × 20.3 cm (10 × 8 in.)  
 Courtesy of and copyright Condé Nast ©  
 Condé Nast / *Vogue*, June 15, 1927  
 EX.2018.7.35



96. Edward Steichen  
 American, born Luxembourg, 1879 - 1973  
 = *Lee Miller: The Evening Mode Is Fully Aware of the Back*, 1928  
 Gelatin silver print  
 Image: 25.4 × 20.3 cm (10 × 8 in.)  
 Courtesy of and copyright Condé Nast  
 © Condé Nast / *Vogue*, August 15, 1928  
 EX.2018.7.37



97. Douglas Pollard  
British, active 1920s  
*Model in a Hat by Reboux*, 1929  
Ink and wash  
Image: 43.2 × 55.2 cm (17 × 21 3/4 in.)  
Courtesy of and copyright Condé Nast  
© Condé Nast / *Vogue*, January 5, 1929  
EX.2018.7.39



98. George Hoyningen-Huene  
American, born Russia, 1900 - 1968  
*Toto Koopman in Augustabernard Gown*, 1933  
Gelatin silver print  
Image: 20.3 × 25.4 cm (8 × 10 in.)  
Courtesy of and copyright Condé Nast  
© Condé Nast / *Vogue*, September 15, 1933  
EX.2018.7.43



99. Lusha Nelson  
American, born Latvia, 1907 - 1938  
*Babs Lee in White Taffeta Jacket*, New York, 1934  
Gelatin silver print  
Image: 20.3 × 25.4 cm (8 × 10 in.)  
Courtesy of and copyright Condé Nast  
© Condé Nast / *Vogue*, May 1, 1934  
EX.2018.7.44



100. Edward Steichen  
American, born Luxembourg, 1879 - 1973  
*Perfection in Black; Margaret Horan*, 1935  
Gelatin silver print  
Image: 25.4 × 20.3 cm (10 × 8 in.)  
Courtesy of and copyright Condé Nast  
© Condé Nast / *Vogue*, November 1, 1935  
EX.2018.7.45



101. Edward Steichen  
American, born Luxembourg, 1879 - 1973  
*Perfection in Black; Frances Doeulon*, 1935  
Gelatin silver print  
Image: 25.4 × 20.3 cm (10 × 8 in.)  
Courtesy of and copyright Condé Nast  
© Condé Nast / *Vogue*, November 1, 1935  
EX.2018.7.46



102. Lusha Nelson  
American, born Latvia, 1907 - 1938  
*Sidewalk*, New York, 1936  
Gelatin silver print  
Image: 17.8 × 22.9 cm (7 × 9 in.)  
Courtesy of and copyright Condé Nast  
© Condé Nast / *Vogue*, August 1, 1936  
EX.2018.7.48



103. Cecil Beaton  
 British, 1904 - 1980  
 = *Wallis Simpson in Schiaparelli's Lobster Dress, 1937*  
 Gelatin silver print  
 Image: 24.1 × 17.8 cm (9 1/2 × 7 in.)  
 Courtesy of and copyright Condé Nast  
 © *Condé Nast / Vogue, June 1, 1937*  
 EX.2018.7.49



104. Kourken Pakchanian  
 American, born Lebanon, 1934 - 1991  
 = *Cheryl Tiegs in a Gown by Halston, Brasilia, 1973*  
 Gelatin silver print  
 Image: 43.2 × 35.6 cm (17 × 14 in.)  
 Courtesy of and copyright Condé Nast  
 © *Condé Nast / Vogue, December 1, 1973*  
 EX.2018.7.58



105. Franco Rubartelli  
 Italian, born 1937  
 = *Veruschka in Yves Saint Laurent Safari Jacket, Negative 1968; printed later*  
 Gelatin silver print  
 Image: 61 × 61 cm (24 × 24 in.)  
 Courtesy Danziger Gallery  
 © *Franco Rubartelli. Courtesy Danziger Gallery*  
 EX.2018.7.60



106. Scott Schuman  
 American, born 1968  
 = *On the Street, Gianpaolo, Milan, January 30, 2009, 2011*  
 Pigment print  
 Image: 30.5 × 21.6 cm (12 × 8 1/2 in.)  
 Courtesy Danziger Gallery  
 © *The Sartorialist, Scott Schuman. Courtesy Danziger Gallery*  
 EX.2018.7.62



107. Scott Schuman  
 American, born 1968  
 = *Style Profile, Ni'ma Ford, December 22, 2011, 2011*  
 Pigment print  
 Image: 30.5 × 21.6 cm (12 × 8 1/2 in.)  
 Courtesy Danziger Gallery  
 © *The Sartorialist, Scott Schuman. Courtesy Danziger Gallery*  
 EX.2018.7.63



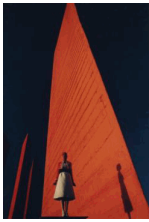
108. Scott Schuman  
 American, born 1968  
 = *Mercer Street, New York, August 25, 2011, 2011*  
 Pigment print  
 Image: 30.5 × 21.6 cm (12 × 8 1/2 in.)  
 Courtesy Danziger Gallery  
 © *The Sartorialist, Scott Schuman. Courtesy Danziger Gallery.*  
 EX.2018.7.64



109. Scott Schuman  
American, born 1968  
*On the Street, Viale Piave, October 11, 2011, 2011*  
Pigment print  
Image: 30.5 × 21.6 cm (12 × 8 1/2 in.)  
Courtesy Danziger Gallery  
© *The Sartorialist, Scott Schuman. Courtesy Danziger Gallery*  
EX.2018.7.65



110. James Moore  
American, 1936 - 2006  
*Untitled, for Harper's Bazaar (One Model Leaning against Car, Another Standing by Driver's Door, Fashion by Geoffrey Beene)*, Negative 1967; printed later  
Gelatin silver print  
Image: 27.8 × 40.6 cm (10 15/16 × 16 in.)  
The Estate of James Moore, Courtesy of Deborah Bell Photographs  
Copyright © Estate of James Moore/Courtesy Deborah Bell, New York  
EX.2018.7.66



111. William Silano  
American, 1934 - 2014  
*Cynthia Korman, Ciudad Satelite, Mexico City, 1968*  
Chromogenic print  
Image: 76.2 × 50.8 cm (30 × 20 in.)  
Deborah Bell Photographs  
© *The Estate of William Silano/Courtesy Deborah Bell Photographs*  
EX.2018.7.67



112. Louis Faurer  
American, 1916 - 2001  
*Bowing for the Vogue Collections, Paris*, Negative 1972; print 1991  
Gelatin silver print  
Image: 46.4 × 35.6 cm (18 1/4 × 14 in.)  
Deborah Bell Photographs  
© *Estate of Louis Faurer*  
EX.2018.7.68

113. Sarah Moon  
French, born England, 1941  
*Untitled*, About 1972  
Gelatin silver print  
Image: 22 × 32.7 cm (8 11/16 × 12 7/8 in.)  
Collection Martin and Norma Stevens, Courtesy of Deborah Bell Photographs  
© *Sarah Moon, Courtesy of Howard Greenberg Gallery, New York*  
EX.2018.7.69



114. Bruce Weber  
American, born 1946  
*Linda Spierings for Karl Lagerfeld, Brittany, France, 1984*  
Gelatin silver print  
Image: 49.5 × 39.4 cm (19 1/2 × 15 1/2 in.)  
Courtesy of Bruce Weber and Nan Bush  
© *Bruce Weber*  
EX.2018.7.71



115. Bruce Weber  
 American, born 1946  
 = *Tom Hintnaus, Santorini, Greece, 1982*  
 Chromogenic print  
 Image: 59.7 × 49.5 cm (23 1/2 × 19 1/2 in.)  
 Courtesy of Bruce Weber and Nan Bush ©  
*Bruce Weber*  
 EX.2018.7.72



116. Inez & Vinoodh  
 Dutch, born 1961 and 1963  
 = *Rafi-Calvin Klein Jeans, Paris, 2002*  
 Gelatin silver print  
 Image: 50.8 × 40.6 cm (20 × 16 in.) Inez  
 & Vinoodh  
 © *Inez and Vinoodh. Courtesy Gagolian*  
 EX.2018.7.73



117. David Seidner  
 American, 1957 - 1999  
 = *Francine Howell, Azzedine Alaia, 1986*  
 Silver-dye bleach print  
 Image: 59.5 × 45.1 cm (23 7/16 × 17 3/4 in.) David  
 Seidner Archive, Courtesy of the International  
 Center of Photography  
 © *David Seidner Archive / International Center of*  
*Photography (2007.61.10)*  
 EX.2018.7.78



118. Steven Klein  
 American, born 1965  
 = *Man with Red Gloves, 2003*  
 Chromogenic print  
 Image: 47.3 × 37.5 cm (18 5/8 × 14 3/4 in.)  
 Purchased, with funds provided by Gayle Greenhill,  
 2006, Courtesy of the International Center of  
 Photography  
 © *Steven Klein / Art Partner*  
 EX.2018.7.79



119. Juergen Teller  
 German, born 1964  
 = *Dakota Fanning for Marc Jacobs Advertising Campaign,*  
*Negative 2007; print 2009*  
 Chromogenic print  
 Image: 50.8 × 33.3 cm (20 × 13 1/8 in.)  
 Purchase, with funds provided by Anne and Joel  
 Ehrenkranz, 2009, Courtesy of the International Center of  
 Photography  
 © *2006 Juergen Teller, All rights reserved*  
 EX.2018.7.80



120. Tim Walker  
 British, born 1970  
 = *Alice Gibbs and Olga Sherer, Sennowe Park, Norfolk,*  
*England, 2007*  
 Gelatin silver print  
 Image: 55.2 × 45.1 cm (21 3/4 × 17 3/4 in.) Purchase,  
 with funds provided by Anne and Joel Ehrenkranz,  
 2009, Courtesy of the International Center of  
 Photography © *Tim*  
*Walker*  
 EX.2018.7.81



121. Ellen von Unwerth  
 German, born 1954  
*Jean Seberg: Christy Turlington*, 1990  
 Chromogenic print  
 Image: 40.6 × 50.8 cm (16 × 20 in.)  
 From the collection of Ellen von Unwerth  
 © *Ellen von Unwerth*  
 EX.2018.7.82



122. Mario Sorrenti  
 Italian, born 1971  
*Guinevere van Seenus*, 1995  
 Chromogenic print  
 Image: 46.7 × 37.2 cm (18 3/8 × 14 5/8 in.)  
 Mario Sorrenti  
 © *Mario Sorrenti / Art Partner*  
 EX.2018.7.83



123. Craig McDean  
 British, born 1964  
*Amber*, 2002, 2002  
 Pigment print  
 Image: 40.6 × 50.8 cm (16 × 20 in.)  
 Courtesy of the artist  
 © *Craig McDean / Art + Commerce*  
 EX.2018.7.84



124. Martin Munkácsi  
 American, born Hungary, 1896 - 1963  
*Jumping a Puddle*, 1934  
 Gelatin silver print  
 Image: 29.2 × 23.2 cm (11 1/2 × 9 1/8 in.)  
 Lent by The Metropolitan Museum of Art, Gilman Collection, Purchase, The Horace W. Goldsmith Foundation Gift, through Joyce and Robert Menschel, 2005 (2005.100.1103)  
 © *Estate of Martin Munkácsi, Courtesy of Howard Greenberg Gallery, New York*  
 EX.2018.7.85



125. Anton Bruehl  
 American, born Australia, 1900 - 1982  
*Knitted-to-order Sportclothes for Bonwitt Teller*, About 1932  
 Gelatin silver print  
 Image: 23.8 × 18.7 cm (9 3/8 × 7 3/8 in.)  
 The New York Public Library, Library Purchase, 2012  
 Courtesy of the *Anton Bruehl Estate*  
 EX.2018.7.86



126. Irving Penn  
 American, 1917 - 2009  
*Black and White "Vogue" Cover*, *Jean Patchett*, *New York*, Negative 1950; print 1968  
 Platinum-palladium print  
 Image: 41.5 × 34.6 cm (16 5/16 × 13 5/8 in.)  
 The Art Institute of Chicago, Gift of Irving Penn, 1996.232  
 © *Condé Nast*  
 EX.2018.7.89



127. Irving Penn  
American, 1917 - 2009  
*Harlequin Dress (Lisa Fonssagrives Penn)*, Negative 1950; print March 1979  
Platinum-palladium print  
Image: 50.4 × 47.8 cm (19 13/16 × 18 13/16 in.)  
The Art Institute of Chicago, Gift of Irving Penn, 1996.236  
© *Condé Nast*  
EX.2018.7.90



128. Irving Penn  
American, 1917 - 2009  
*Issey Miyake, Onon Flower Bud Coat, New York, 1988*  
Platinum print  
Framed: 69.9 × 68.6 × 3.8 cm (27 1/2 × 27 × 1 1/2 in.)  
The Irving Penn Foundation  
© *The Irving Penn Foundation*  
EX.2018.7.92



129. Richard Avedon  
American, 1923 - 2004  
*Renée, The New Look of Dior, Place de la Concorde, Paris, August 1947*, Negative 1947; print 1978  
Gelatin silver print  
Image: 45.7 × 35.5 cm (18 × 14 in.)  
The Richard Avedon Foundation, New York  
Copyright © *The Richard Avedon Foundation*  
EX.2018.7.94



130. Richard Avedon  
American, 1923 - 2004  
*Dovima, Evening Dress by Grès, Paris, August 1950*, Negative 1950; print 1978  
Gelatin silver print  
Image: 45.7 × 35.5 cm (18 × 14 in.)  
The Richard Avedon Foundation, New York  
Copyright © *The Richard Avedon Foundation*  
EX.2018.7.95



131. Richard Avedon  
American, 1923 - 2004  
*Sunny Harnett, Evening Dress by Grès, Casino, Le Touquet, August 1954*, Negative 1954; print 1978  
Gelatin silver print  
Image: 44.4 × 33.7 cm (17 1/2 × 13 1/4 in.)  
The Richard Avedon Foundation, New York  
Copyright © *The Richard Avedon Foundation*  
EX.2018.7.96



132. Richard Avedon  
American, 1923 - 2004  
*Dovima with Elephants, Evening Dress by Dior, Cirque d'Hiver, Paris, August 1955*, Negative 1955; print 1979  
Gelatin silver print  
Image: 61 × 50.8 cm (24 × 20 in.)  
The Richard Avedon Foundation, New York  
Copyright © *The Richard Avedon Foundation*  
EX.2018.7.97



133. Richard Avedon  
 American, 1923 - 2004  
*Carmen (Homage to Munkácsi), Coat by Cardin, Place François Premier, Paris, August 1957*, Negative 1957; print 1978  
 Gelatin silver print  
 Image: 45.7 × 35.5 cm (18 × 14 in.)  
 The Richard Avedon Foundation, New York  
 Copyright © The Richard Avedon Foundation  
 EX.2018.7.98



134. Richard Avedon  
 American, 1923 - 2004  
*China Machado, Evening Pajamas by Galitzine, London, October 1965*, Negative 1965; print 1981  
 Gelatin silver print  
 Image: 61 × 50.8 cm (24 × 20 in.)  
 The Richard Avedon Foundation, New York  
 Copyright © The Richard Avedon Foundation  
 EX.2018.7.99



135. Louise Dahl-Wolfe  
 American, 1895 - 1989  
*Claire McCardell Suit with Scarf over Face*, 1945  
 Gelatin silver print  
 Image: 46 × 38 cm (18 1/8 × 14 15/16 in.)  
 Staley-Wise Gallery  
 © 1989 Center for Creative Photography, Arizona Board of Regents / Artists Rights Society (ARS), New York  
 EX.2018.7.100

136. Toni Frissell  
 American, 1907 - 1988  
*First Bikini Seen Outside France, Montego Bay, Jamaica, 1947*  
 Gelatin silver print  
 Image: 27 × 26 cm (10 5/8 × 10 1/4 in.)  
 Staley-Wise Gallery  
 EX.2018.7.102



137. Irving Penn  
 American, 1917 - 2009  
*The Twelve Most Photographed Models (B)*, 1947  
 Gelatin silver print  
 Image: 33.7 × 42.2 cm (13 1/4 × 16 5/8 in.)  
 Courtesy of Etheleen Staley  
 © Condé Nast  
 EX.2018.7.103



138. Cecil Beaton  
 British, 1904 - 1980  
*Charles James Ball Gowns, New York, 1948*  
 Silver-dye bleach print  
 Image: 46 × 58 cm (18 1/8 × 22 13/16 in.)  
 Staley-Wise Gallery  
 © Condé Nast / Vogue, June 1, 1948  
 EX.2018.7.104



139. Louise Dahl-Wolfe  
 American, 1895 - 1989  
*Model Amid Ruins, Paris, 1946*  
 Gelatin silver print  
 Image: 36 × 28 cm (14 3/16 × 11 in.)  
 Staley-Wise Gallery  
 © 1989 Center for Creative Photography, Arizona Board  
 of Regents / Artists Rights Society (ARS), New York  
 EX.2018.7.105



141. Frank Horvat  
 Croatian, born 1928  
*New York, for "Harper's Bazaar," Model with Shadow (b), 1961*  
 Gelatin silver print  
 Image: 45 × 30 cm (17 11/16 × 11 13/16 in.)  
 Staley-Wise Gallery  
 © Frank Horvat  
 EX.2018.7.108



143. Chris von Wangenheim  
 German, 1942 - 1981  
*Gelsey Kirkland and Judith Fugate, Harper's Bazaar, December 1970, 1970*  
 Gelatin silver print  
 Sheet: 40.6 × 35.6 cm (16 × 14 in.)  
 Staley-Wise Gallery  
 © The Collection of Chris von Wangenheim,  
 LLC/Licensed by VAGA, New York, NY  
 EX.2018.7.111



140. Bert Stern  
 American, 1929 - 2013  
*Chiffons that Move with the Night, 1961*  
 Gelatin silver print  
 Image: 58 × 48 cm (22 13/16 × 18 7/8 in.)  
 Staley-Wise Gallery  
 Used with permission of the Bert Stern Trust  
 EX.2018.7.107



142. David Montgomery  
 American, born 1937  
*Grace Coddington, Vidal Sassoon Five Point Haircut, 1965*  
 Gelatin silver print  
 Image: 51 × 51 cm (20 1/16 × 20 1/16 in.)  
 Staley-Wise Gallery  
 © David Montgomery  
 EX.2018.7.110



144. Francesco Scavullo  
 American, 1921 - 2004  
*Regine Jaffry and Gunilla Lindblad, 1974*  
 Gelatin silver print  
 Image: 39 × 50 cm (15 3/8 × 19 11/16 in.)  
 Staley-Wise Gallery  
 © The Francesco Scavullo Foundation ©  
 The Francesco Scavullo Trust  
 EX.2018.7.112



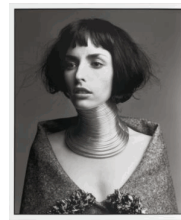
145. Chris von Wangenheim  
German, 1942 - 1981  
*Lisa Taylor, Fetching is Your Dior*, Negative 1976; print 2017  
Pigment print  
Sheet: 40.6 × 35.6 cm (16 × 14 in.)  
The Collection of Chris von Wangenheim, LLC  
© *The Collection of Chris von Wangenheim, LLC*  
EX.2018.7.113



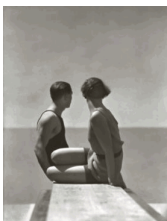
146. Baron Adolf de Meyer  
American, born France, 1868 - 1946  
*Mrs. Gertrude Vanderbilt Whitney, in a Costume by Leon Bakst*, 1913  
Gelatin silver print  
Image: 24.1 × 12 cm (9 1/2 × 4 3/4 in.)  
Museum of Fine Arts, Boston. John H. and Ernestine A. Payne Fund  
EX.2018.7.118



147. Saul Leiter  
American, 1923 - 2013  
*Untitled, for "Harper's Bazaar," February 1959*, Negative, 1959; printed later  
Silver-dye bleach print  
Image: 34.3 × 22.8 cm (13 1/2 × 9 in.)  
Museum of Fine Arts, Boston. Francis Welch Fund  
© *Saul Leiter Estate/Courtesy Howard Greenberg Gallery Photograph* © 2018 Museum of Fine Arts, Boston  
EX.2018.7.120



148. Patrick Demarchelier  
French, born 1943  
*Danielle*, 1997  
Gelatin silver print  
Image: 61 × 50.8 cm (24 × 20 in.)  
Museum of Fine Arts, Boston. Gift of Patrick Demarchelier  
*Image by Patrick Demarchelier, Harper's Bazaar, Hearst Communications, Inc.*  
*Photograph* © 2018 Museum of Fine Arts, Boston  
EX.2018.7.122



149. George Hoyningen-Huene  
American, born Russia, 1900 - 1968  
*Bathing Suits by Izod, Paris*, 1930  
Gelatin silver print  
Image: 43.2 × 33 cm (17 × 13 in.)  
Richard and Allison Roeder  
© *Horst*  
EX.2018.7.123



150. Lillian Bassman  
American, 1917 - 2012  
*Gala Night, Barbara Mullen, Dress by Patou, Paris*, 1949  
Gelatin silver print  
Image: 24.1 × 26.7 cm (9 1/2 × 10 1/2 in.)  
Richard and Allison Roeder  
©*The Estate Of Lillian Bassman, courtesy of the Edwynn Houk Gallery*  
EX.2018.7.124



151. Lillian Bassman  
American, 1917 - 2012  
*Charles James Dress, Carmen, New York, Negative*,  
1960; printed later  
Platinum print  
Image: 69.9 × 47 cm (27 1/2 × 18 1/2 in.)  
Richard and Allison Roeder  
©The Estate Of Lillian Bassman, courtesy of the Edwynn  
Houk Gallery  
EX.2018.7.127



152. Horst P. Horst  
American, born Germany, 1906 - 1999  
*The Mainbocher Corset, Paris*, 1939  
Gelatin silver print  
Image: 55.2 × 40.6 cm (21 3/4 × 16 in.)  
Courtesy: Fahey/Klein Gallery, Los Angeles  
© Condé Nast / Vogue, September 15, 1939  
EX.2018.7.128



153. Frank Horvat  
Croatian, born 1928  
*Paris, for "Jardin Des Modes," Givenchy Hat (b)*, 1958  
Platinum print  
Image: 52.1 × 74.3 cm (20 1/2 × 29 1/4 in.)  
Courtesy: Fahey/Klein Gallery, Los Angeles  
© Frank Horvat  
EX.2018.7.129



154. Patrick Demarchelier  
French, born 1943  
*Nadja, New York*, 1995  
Gelatin silver print  
Image: 61 × 50.8 cm (24 × 20 in.)  
Courtesy: Fahey/Klein Gallery, Los Angeles  
*Image by Patrick Demarchelier, Harper's Bazaar, Hearst  
Communications, Inc.*  
EX.2018.7.131



155. Gordon Parks  
American, 1912 - 2006  
*Hollywood*, 1959  
Gelatin silver print  
Image: 27.9 × 35.6 cm (11 × 14 in.)  
Susan and G. Ray Hawkins  
*Courtesy of and copyright The Gordon Parks Foundation*  
EX.2018.7.132



156. Gleb Derujinsky  
American, 1925 - 2011  
*The Temple of Dawn II, Bangkok, Thailand*, 1957  
Gelatin silver print  
Image: 38.1 × 38.1 cm (15 × 15 in.)  
Lent by Andrea Derujinsky  
© A. Derujinsky  
EX.2018.7.133

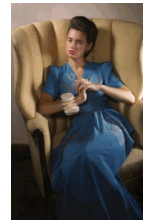


157. Gleb Derujinsky  
 American, 1925 - 2011  
*Carmen and Ruth in Floral Evening Gowns*, 1957  
 Gelatin silver print  
 Image: 38.1 × 38.1 cm (15 × 15 in.)  
 Lent by Andrea Derujinsky  
 © A. Derujinsky  
 EX.2018.7.134

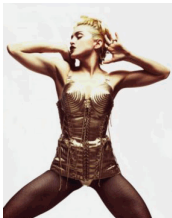
158. Edward Steichen  
 American, born Luxembourg, 1879 - 1973  
*Marion Morehouse, New York*, 1931  
 Gelatin silver print  
 Image: 25.4 × 20.3 cm (10 × 8 in.)  
 Los Angeles County Museum of Art, Gift of Richard and Jackie Hollander  
 EX.2018.7.135



159. George Hurrell  
 American, 1904 - 1992  
*Joan Crawford Wearing the Letty Lynton Dress*, 1932  
 Gelatin silver print  
 Image: 27.9 × 35.6 cm (11 × 14 in.)  
 Special Collections, USC Libraries, University of Southern California  
 EX.2018.7.138



160. George Hurrell  
 American, 1904 - 1992  
*Gloria Vanderbilt at Home, Beverly Hills*, 1941  
 Color film transparency  
 Image: 27.9 × 35.5 cm (11 × 14 in.)  
 Greif, D'Elia, Chapman Collection  
 © Estate of George Hurrell  
 EX.2018.7.139



161. Jean-Baptiste Mondino  
 French, born 1949  
*Miss M*, Negative 1988; print 2011  
 Chromogenic print  
 Image: 40.6 × 31.8 cm (16 × 12 1/2 in.)  
 Courtesy of M+B Gallery and the artist  
 © Jean-Baptiste Mondino, courtesy of M+B Gallery, Los Angeles  
 EX.2018.7.140



162. Jean-Baptiste Mondino  
 French, born 1949  
*Smoky Dragon*, Negative 2011; print 2017  
 Chromogenic print  
 Image: 40.6 × 31.8 cm (16 × 12 1/2 in.)  
 Courtesy of M+B Gallery and the artist  
 © Jean-Baptiste Mondino, courtesy of M+B Gallery, Los Angeles  
 EX.2018.7.141



163. Melanie Pullen  
American, born 1975  
*Half Prada*, 2003  
Chromogenic print  
Framed: 86.4 × 127 cm (34 × 50 in.)  
Melanie Pullen  
© *Melanie Pullen*  
EX.2018.7.142



164. Frances McLaughlin-Gill  
American, 1919 - 2014  
*Pat Ward Modeling a White Jacket*, 1946  
Gelatin silver print  
Image: 19.7 × 19.1 cm (7 3/4 × 7 1/2 in.)  
Peter Fetterman Gallery  
© 2017 *The Estate of Frances McLaughlin-Gill*  
EX.2018.7.143



165. Tim Walker  
British, born 1970  
*The Dress-Lamp Tree, England*, 2002  
Chromogenic print  
Image: 148.2 × 125.2 cm (58 3/8 × 49 5/16 in.)  
Steven and Catherine Fink  
© *Tim Walker*  
EX.2018.7.145

166. Steven Meisel  
American, born 1954  
*Linda Evangelista, for French "Vogue"*, 1989  
Gelatin silver print  
Image: 40.6 × 50.8 cm (16 × 20 in.)  
Steven Khan  
© *Steven Meisel*  
EX.2018.7.147



167. Mario Testino  
Peruvian, born 1954  
*Kate Moss, London*, 2006  
Chromogenic print  
Image: 40.6 × 58.4 cm (16 × 23 in.)  
Steven Khan  
© *Mario Testino*  
EX.2018.7.148

168. Attributed to Chanel  
*Woman's Two-Piece Dress*, 1924  
Silk plain weave (crepe chiffon) with metal and crystal buckle  
Object: L: 43.2 cm (17 in.)  
Los Angeles County Museum of Art, Purchased with funds provided by Ellen A. Michelson  
*Photo* © *Museum Associates/LACMA*  
EX.2018.7.149.a



169. Attributed to Chanel  
= *Woman's Two-Piece Dress*, 1924  
Silk plain weave (crepe chiffon) with metal and crystal buckle  
Object: L: 109.2 cm (43 in.)  
Los Angeles County Museum of Art, Purchased with funds provided by Ellen A. Michelson  
*Photo © Museum Associates/LACMA*  
EX.2018.7.149.b



170. Attributed to Madeleine Vionnet  
French, 1876 - 1975  
= *Woman's Dress*, 1937  
Silk plain weave (basket weave crepe)  
Object: L: 151.1 × W: 88.9 cm (59 1/2 × 35 in.) Los Angeles County Museum of Art, Purchased with funds provided by Ellen A. Michelson  
*Photo © Museum Associates/LACMA*  
EX.2018.7.150



171. House of Dior, Christian Dior  
French, 1905 - 1957  
= *Woman's Dress "Abandon"*, Fall/Winter 1948  
Wool plain weave (crepe)  
Object: L: 75.9 cm (29 7/8 in.)  
Los Angeles County Museum of Art, Gift of Mrs. Laura-Lee W. Woods  
*Photo © Museum Associates/LACMA*  
EX.2018.7.151.a



172. House of Dior, Christian Dior  
French, 1905 - 1957  
= *Woman's Dress "Abandon"*, Fall/Winter 1948  
Wool plain weave (crepe)  
Object: L: 76.8 cm (30 1/4 in.)  
Los Angeles County Museum of Art, Gift of Mrs. Laura-Lee W. Woods  
*Photo © Museum Associates/LACMA*  
EX.2018.7.151.b



173. House of Dior, Christian Dior  
French, 1905 - 1957  
= *Woman's Dress "Abandon"*, Fall/Winter 1948  
Wool plain weave (crepe)  
Object: L: 128.9 cm (50 3/4 in.)  
Los Angeles County Museum of Art, Gift of Mrs. Laura-Lee W. Woods  
*Photo © Museum Associates/LACMA*  
EX.2018.7.151.c



174. Madame Grès  
French, 1903 - 1993  
= *Woman's Evening Dress*, 1954  
Rayon knit (jersey) with metallic and cotton twill ribbon (lamé)  
Object: L: 172.7 × W: 96.5 cm (68 × 38 in.)  
Los Angeles County Museum of Art, Purchased with funds provided by Ellen A. Michelson  
*Photo © Museum Associates/LACMA*  
EX.2018.7.152



175. André Courrèges  
French, 1923 - 2016  
= *Woman's Ensemble (Dress and Jacket)*, 1965-1967 Silk tulle with cotton embroidery, silk jersey, and silk jersey with metallic pigment  
Object: L: 80.7 cm (31 3/4 in.)  
Los Angeles County Museum of Art, Gift of Mr. and Mrs. John Frankenheimer  
*Photo © Museum Associates/LACMA*  
EX.2018.7.153.a



176. André Courrèges  
French, 1923 - 2016  
= *Woman's Ensemble (Dress and Jacket)*, 1965-1967 Los Angeles County Museum of Art, Gift of Mr. and Mrs. John Frankenheimer  
*Photo © Museum Associates/LACMA*  
EX.2018.7.153.b



177. André Courrèges  
French, 1923 - 2016  
= *Woman's Ensemble (Dress and Jacket)*, 1965-1967 Silk jersey with metallic pigment  
Object: L: 33.7 cm (13 1/4 in.)  
Los Angeles County Museum of Art, Gift of Mr. and Mrs. John Frankenheimer  
*Photo © Museum Associates/LACMA*  
EX.2018.7.153.c



178. Halston (Roy Frowick)  
American, 1932 - 1990  
= *Woman's Dress*, 1973  
Silk plain weave (chiffon), wax resist-dyed, with plastic sequins  
Object: L: 142.2 cm (56 in.)  
Los Angeles County Museum of Art, Gift from the Collection of Regina J. Drucker  
*Photo © Museum Associates/LACMA*  
EX.2018.7.154



179. Issey Miyake  
Japanese, born 1938  
= *Woman's Coat, 'Seashell'*, Spring/Summer 1985  
Cotton, linen, nylon knit  
Object: L: 113.7 cm (44 3/4 in.)  
Los Angeles County Museum of Art, Gift from the Collection of Regina J. Drucker  
*Photo © Museum Associates/LACMA*  
EX.2018.7.155



180. Alexander McQueen  
British, 1969 - 2010  
= *Woman's Suit from the "Scanners" Collection*, Fall/Winter 2003-2004  
Cotton, wool double cloth  
Object: L: 58.7 cm (23 1/8 in.)  
Los Angeles County Museum of Art, Gift from the Collection of Regina J. Drucker  
*Photo © Museum Associates/LACMA*  
EX.2018.7.156.a



181. Alexander McQueen  
British, 1969 - 2010  
= *Woman's Suit from the "Scanners" Collection, Fall/Winter 2003-2004*  
Cotton, wool double cloth  
Object: L: 59.7 cm (23 1/2 in.)  
Los Angeles County Museum of Art, Gift from the Collection of Regina J. Drucker  
*Photo* © Museum Associates/LACMA  
EX.2018.7.156.b



182. William Klein  
American, born 1928  
= *Backstage, J. P. Gaultier, Paris, 1984*  
Gelatin silver print  
Image: 29.3 × 44.7 cm (11 9/16 × 17 5/8 in.)  
Los Angeles County Museum of Art, Gift of Virginia Zabriskie  
© William Klein  
*Digital Image:* © 2018 Museum Associates / LACMA.  
*Licensed by Art Resource, NY*  
EX.2018.7.157



183. Genevieve Naylor  
American, 1915 - 1989  
= *Models in Dark Flannel Suit and Coat by Sheila Lynn, New York, Negative 1950; printed later*  
Gelatin silver print  
Image: 25.4 × 25.4 cm (10 × 10 in.)  
Susan and G. Ray Hawkins  
© Genevieve Naylor / Courtesy Staley-Wise Gallery  
EX.2018.7.158

184. Man Ray (Emmanuel Radnitsky)  
American, 1890 - 1976  
= *Nancy Cunard, 1928*  
Gelatin silver print  
Image: 29 × 22.8 cm (11 7/16 × 9 in.)  
The Art Institute of Chicago, Julien Levy Collection, Special Photography Acquisition Fund, 1979.94  
© Man Ray Trust / Artists Rights Society (ARS), New York / ADAGP, Paris  
EX.2018.7.162



185. Jamel Shabazz  
American, born 1960  
= *Dapper, Negative, 1980; printed later*  
Digital chromogenic print  
Sheet: 25.4 × 20.3 cm (10 × 8 in.)  
Courtesy of Jamel Shabazz  
EX.2018.7.163



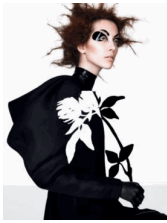
186. Jamel Shabazz  
American, born 1960  
= *The Latin Connection, Negative, 1982; printed later*  
Digital chromogenic print  
Sheet: 25.4 × 20.3 cm (10 × 8 in.)  
Courtesy of Jamel Shabazz  
EX.2018.7.164



187. Cecil Beaton  
 British, 1904 - 1980  
*Fashion Is Indestructible, London, 1941*  
 Gelatin silver print  
 Image: 23.9 × 24.3 cm (9 7/16 × 9 9/16 in.)  
 Victoria and Albert Museum, London  
 © Condé Nast / Vogue, 1941  
 EX.2018.7.165



188. Wynn Richards  
 American, 1888 - 1960  
*Actress Mary Nash Modeling a Diaphanous Dress, 1923*  
 Gelatin silver print  
 Courtesy of and copyright Condé Nast  
 © Condé Nast / Vogue, January 1, 1923  
 EX.2018.7.166



189. Richard Burbridge  
 British, born 1965  
*In Silhouette, 2007*  
 Chromogenic print  
 Image: 61 × 71.1 cm (24 × 28 in.)  
 Courtesy of the artist  
 EX.2018.7.170



190. Gordon Parks  
 American, 1912 - 2006  
*Bettina and Frances McLaughlin-Gill, New York, 1950*  
 Gelatin silver print  
 Image: 34.3 × 27.3 cm (13 1/2 × 10 3/4 in.)  
 Beth Rudin DeWoody  
 Courtesy of and copyright The Gordon Parks Foundation  
 EX.2018.7.171



191. Bullock's Department Stores  
 United States, 1906 - 1993  
*Woman's Hat, 1940s*  
 Straw, plaited, with silk velvet ribbon trim  
 Object: H: 9.2 × W: 40 cm (3 5/8 × 15 3/4 in.)  
 Los Angeles County Museum of Art, Gift of Victoria Rood  
 Photo © Museum Associates/LACMA  
 EX.2018.7.172



192. Issey Miyake  
 Japanese, born 1938  
*Woman's Boots, 1985-86*  
 Leather  
 Object: H: 26.7 × W: 8.9 × L: 24.1 cm (10 1/2 × 3 1/2 × 9 1/2 in.)  
 Los Angeles County Museum of Art, Gift of Jean Concoff  
 Photo © Museum Associates/LACMA  
 EX.2018.7.173.1



193. Issey Miyake  
Japanese, born 1938  
= *Woman's Boots*, 1985-86  
Leather  
Object: H: 26.7 × W: 8.9 × L: 24.1 cm (10 1/2 × 3 1/2 × 9 1/2 in.)  
Los Angeles County Museum of Art, Gift of Jean Concoff  
*Photo © Museum Associates/LACMA*  
EX.2018.7.173.2

194. Fenton Footwear  
= *Woman's Shoes*, About 1932  
Silk satin and leather with crystals  
Los Angeles County Museum of Art, Gift of Mrs. A. M. Owings  
EX.2018.7.174.1



195. Fenton Footwear  
= *Woman's Shoes*, About 1932  
Silk satin and leather with crystals  
Los Angeles County Museum of Art, Gift of Mrs. A. M. Owings  
EX.2018.7.174.2

196. André Courrèges  
French, 1923 - 2016  
= *Woman's Boots*, About 1965  
Leather  
Object: H: 25.1 × L: 24.8 cm (9 7/8 × 9 3/4 in.)  
Los Angeles County Museum of Art, Gift of Mr. and Mrs. John Frankenheimer  
*Photo © Museum Associates/LACMA*  
EX.2018.7.175.1

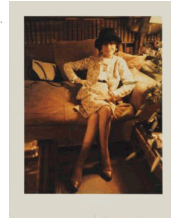


197. André Courrèges  
French, 1923 - 2016  
= *Woman's Boots*, About 1965  
Leather  
Object: H: 25.1 × L: 24.8 cm (9 7/8 × 9 3/4 in.)  
Los Angeles County Museum of Art, Gift of Mr. and Mrs. John Frankenheimer  
*Photo © Museum Associates/LACMA*  
EX.2018.7.175.2

198. Charles N. Babes  
English, active early 20th century  
= *Woman's Shoes*, About 1922  
Silk damask, silk satin, and leather  
Object: L: 27.9 × H: 7.6 × W: 11.4 cm (11 × 3 × 4 1/2 in.)  
Los Angeles County Museum of Art, Gift of Jeanne Uzelac  
*Photo © Museum Associates/LACMA*  
EX.2018.7.176.1



199. Charles N. Babes  
English, active early 20th century  
= *Woman's Shoes*, About 1922  
Silk damask, silk satin, and leather  
Object: L: 27.9 × H: 7.6 × W: 11.4 cm (11 × 3 × 4 1/2 in.)  
Los Angeles County Museum of Art, Gift of Jeanne Uzelac  
Photo © Museum Associates/LACMA  
EX.2018.7.176.2



200. Marie Cosindas  
American, 1923 - 2017  
= *Coco Chanel*, 1969  
Dye diffusion print  
Image: 11.4 × 8.9 cm (4 1/2 × 3 1/2 in.)  
Marie Cosindas  
© Marie Cosindas  
L.2016.98.1



201. Marie Cosindas  
American, 1923 - 2017  
= *Elsa Schiaparelli*, 1969  
Dye diffusion print  
Image: 11.4 × 8.9 cm (4 1/2 × 3 1/2 in.)  
Marie Cosindas  
© Marie Cosindas  
L.2016.98.2



202. Marie Cosindas  
American, 1923 - 2017  
= *Madame Grès*, 1969  
Dye diffusion print  
Image: 11.4 × 8.9 cm (4 1/2 × 3 1/2 in.)  
Marie Cosindas  
© Marie Cosindas  
L.2016.98.3



203. Marie Cosindas  
American, 1923 - 2017  
= *Madame Vionnet*, 1969  
Dye diffusion print  
Image: 11.4 × 8.9 cm (4 1/2 × 3 1/2 in.)  
Marie Cosindas  
© Marie Cosindas  
L.2016.98.4

