

Giovanni Bellini: Landscapes of Faith in Renaissance Venice

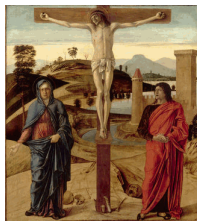
October 10, 2017 to January 14, 2018
The J. Paul Getty Museum at the Getty Center



1. Giovanni Bellini
Italian, about 1431/1436 - 1516
Saint Dominic, About 1501
Oil on wood panel
Unframed: 41.9 × 26.7 cm (16 1/2 × 10 1/2 in.)
Private Collection, Courtesy of Denver Art Museum
Photography courtesy Denver Art Museum
EX.2017.7.17



2. Giovanni Bellini
Italian, about 1431/1436 - 1516
Virgin and Child with Saint John the Baptist and a Female Saint in a Landscape, About 1501
Tempera and oil on wood panel
Unframed: 55 × 77 cm (21 5/8 × 30 5/16 in.)
Gallerie dell'Accademia, Venice
Image: Scala/Ministero per i Beni e le Attività culturali / Art Resource, NY
EX.2017.7.13



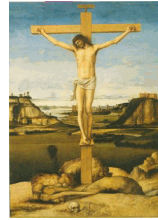
3. Giovanni Bellini
Italian, about 1431/1436 - 1516
Crucifixion with the Virgin and Saint John the Evangelist, About 1465
Tempera on wood panel
Unframed: 71 × 63 cm (27 15/16 × 24 13/16 in.)
Paris, Musée du Louvre, Département des Peintures
Image: © RMN-Grand Palais / Art Resource, NY. Photo: Michel Urtado
EX.2017.7.11



4. Giovanni Bellini
Italian, about 1431/1436 - 1516
Crucifixion with the Virgin and Saint John the Evangelist, About 1458-59
Oil and tempera on wood panel
Unframed: 53.3 × 29.5 cm (21 × 11 5/8 in.)
Fondazione Musei Civici di Venezia, Museo Correr
Image: Cameraphoto Arte, Venice / Art Resource, NY
EX.2017.7.6



5. Giovanni Bellini
Italian, about 1431/1436 - 1516
Crucifixion, About 1495-1500
Tempera (?) and oil on wood panel
Unframed: 80 × 48.9 cm (31 1/2 × 19 1/4 in.)
Collezione Banca Popolare di Vicenza
EX.2017.7.2



6. Giovanni Bellini
Italian, about 1431/1436 - 1516
Crucifixion, About 1475
Tempera (?) and oil on wood panel
Unframed: 71 × 50 cm (27 15/16 × 19 11/16 in.)
Galleria Corsini, Florence
Image courtesy of Giovanni C.F. Villa, Università degli Studi di Bergamo, Centro di Ateneo di Arti Visive
EX.2017.7.1



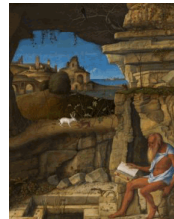
7. Giovanni Bellini
Italian, about 1431/1436 - 1516
The Good and Bad Thieves, Dismas and Gestas,
About 1475
Panel transferred to canvas, glued to a new wooden support
Panel: 79.4 × 29.3 cm (31 1/4 × 11 9/16 in.)
The Alana Collection, Newark, Delaware, USA
EX.2017.7.14.1-.2



8. Giovanni Bellini
Italian, about 1431/1436 - 1516
Saint Jerome in the Wilderness, About 1455
Tempera on wood panel
Unframed: 44.2 × 33 cm (17 3/8 × 13 in.)
The Henry Barber Trust, the Barber Institute of Fine Arts,
University of Birmingham
Image: © The Barber Institute of Fine Arts, University of Birmingham
EX.2017.7.8



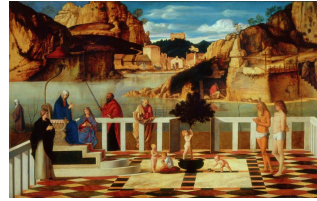
9. Giovanni Bellini
Italian, about 1431/1436 - 1516
Saint Jerome Reading in the Wilderness, About 1485
Tempera and oil on wood panel
Unframed: 47 × 34 cm (18 1/2 × 13 3/8 in.)
The National Gallery, London. Bought, 1855
Image: © National Gallery, London / Art Resource, NY
EX.2017.7.4



10. Giovanni Bellini
Italian, about 1431/1436 - 1516
Saint Jerome Reading in the Wilderness, 1505
Oil on wood panel
Unframed: 48.9 × 39.5 cm (19 1/4 × 15 9/16 in.)
National Gallery of Art, Washington, Samuel H. Kress
Collection, 1939.1.217
Image courtesy National Gallery of Art, Washington
EX.2017.7.3



11. Giovanni Bellini
Italian, about 1431/1436 - 1516
Christ Blessing, About 1500
Tempera and oil on wood panel
Unframed: 59 × 47 cm (23 1/4 × 18 1/2 in.)
Kimbell Art Museum, Fort Worth, Texas
EX.2017.7.12



12. Giovanni Bellini
Italian, about 1431/1436 - 1516
Sacred Allegory, About 1500-1504
Tempera (?) and oil on wood panel
Unframed: 73 × 119 cm (28 3/4 × 46 7/8 in.)
Gallerie degli Uffizi, Florence
*Image: Scala/Ministero per i Beni e le Attività culturali /
Art Resource, NY*
EX.2017.7.7



13. Giovanni Bellini
Italian, about 1431/1436 - 1516
Nativity, About 1470
Pen and brown ink, slightly washed with brush, on paper
Framed: 21.1 × 21.1 cm (8 5/16 × 8 5/16 in.)
The Samuel Courtauld Trust, The Courtauld Gallery,
London
EX.2017.7.9

